



Scale Matters: Salmon Habitat Restoration and Social Complexity in the Skagit Valley

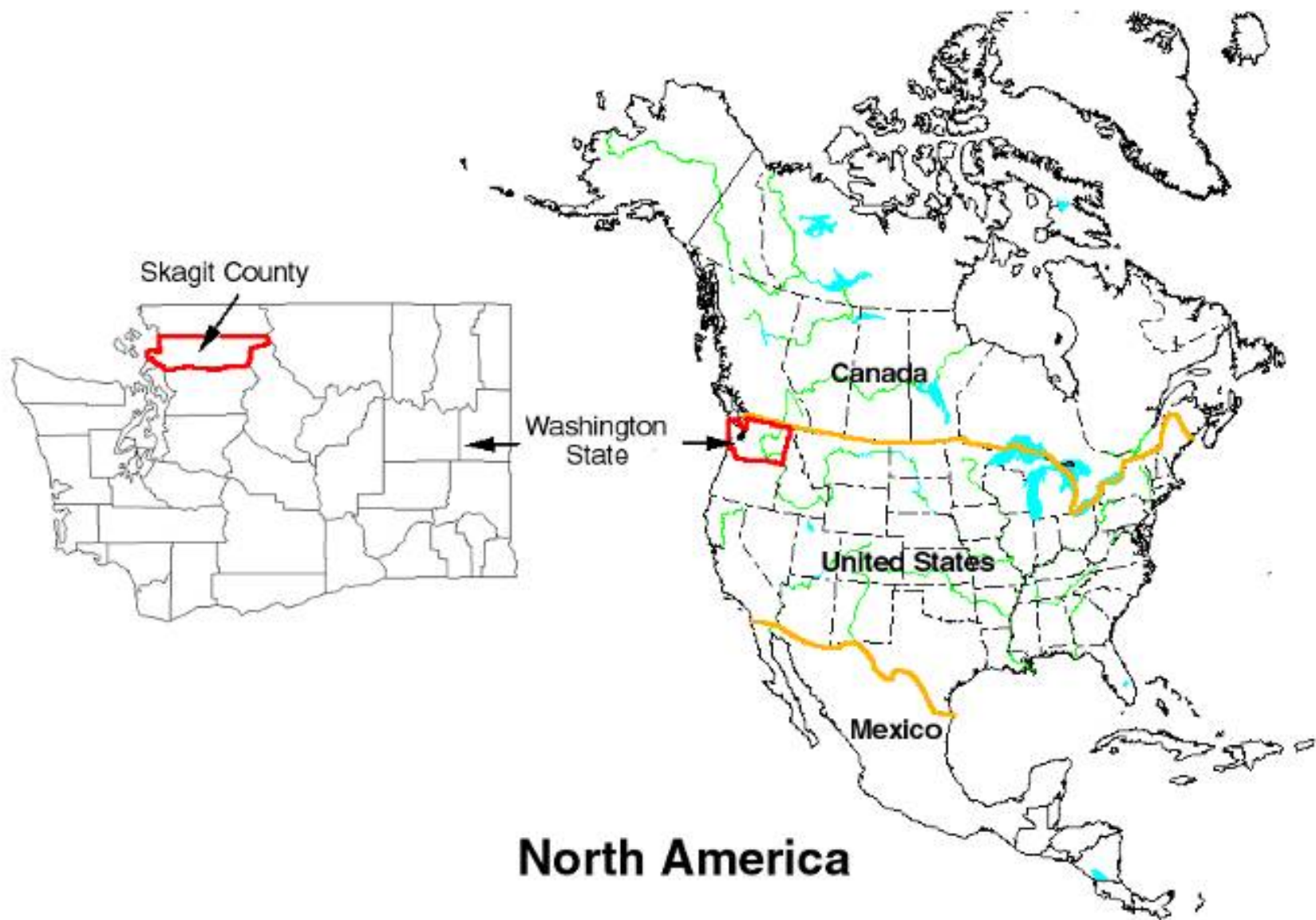
Do not quote, reproduce or distribute this presentation without permission of the author.

Sara Jo Breslow (sarajo@u.washington.edu)

Environmental Anthropology, University of Washington

The Water Center 18th Annual Review of Research February
14, 2008, Seattle



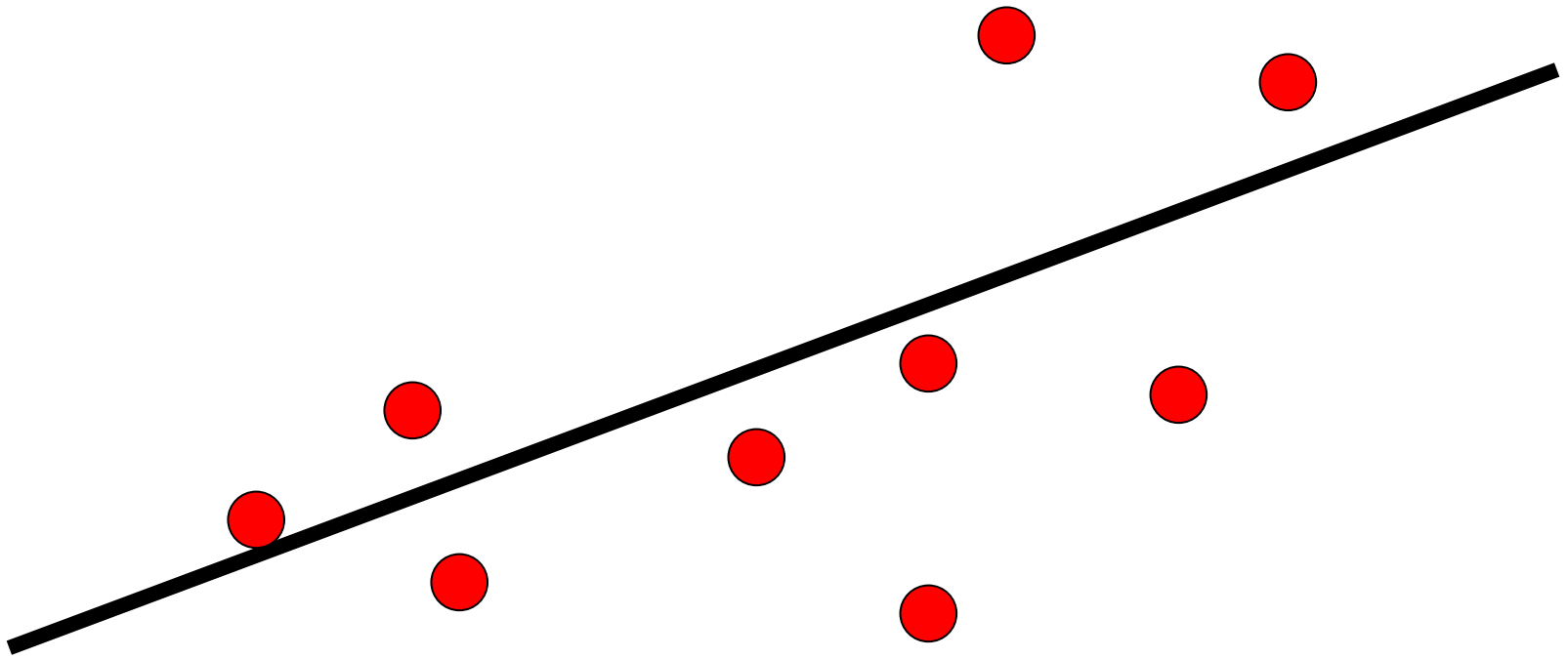
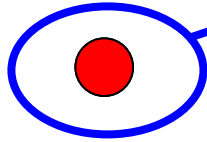


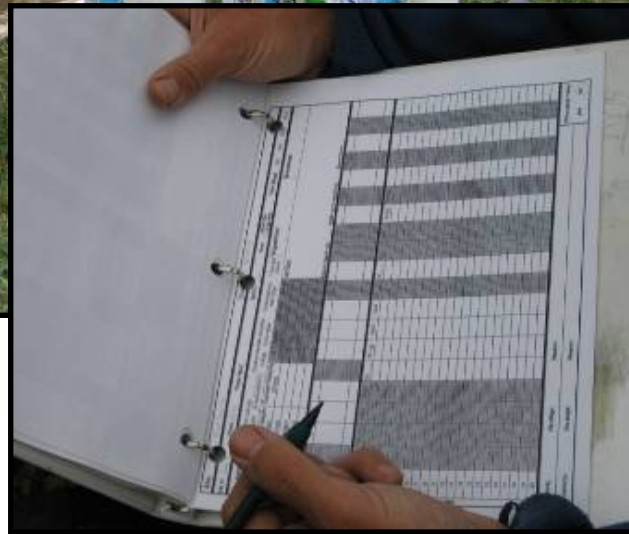
*“This is **the principal technique of scientific inquiry**, by changing the scale of description, we move from unpredictable, unrepeatable individual cases to collections of cases whose behavior is regular enough to allow generalizations to be made. In doing so, we trade off the loss of detail or heterogeneity within a group for the gain of predictability; **we thereby extract and abstract those fine-scale features that have relevance** for the phenomena observed on other scales.”*

Simon Levin, 1992

The problem of pattern and scale in ecology. Ecology 73(6):1943-1967.

county commissioner?





making the complexity of a system:

- comprehensible
- standardized
- predictable &
- manageable



*“We are in it because we love it and this is our life.
... It’s not about money.”*

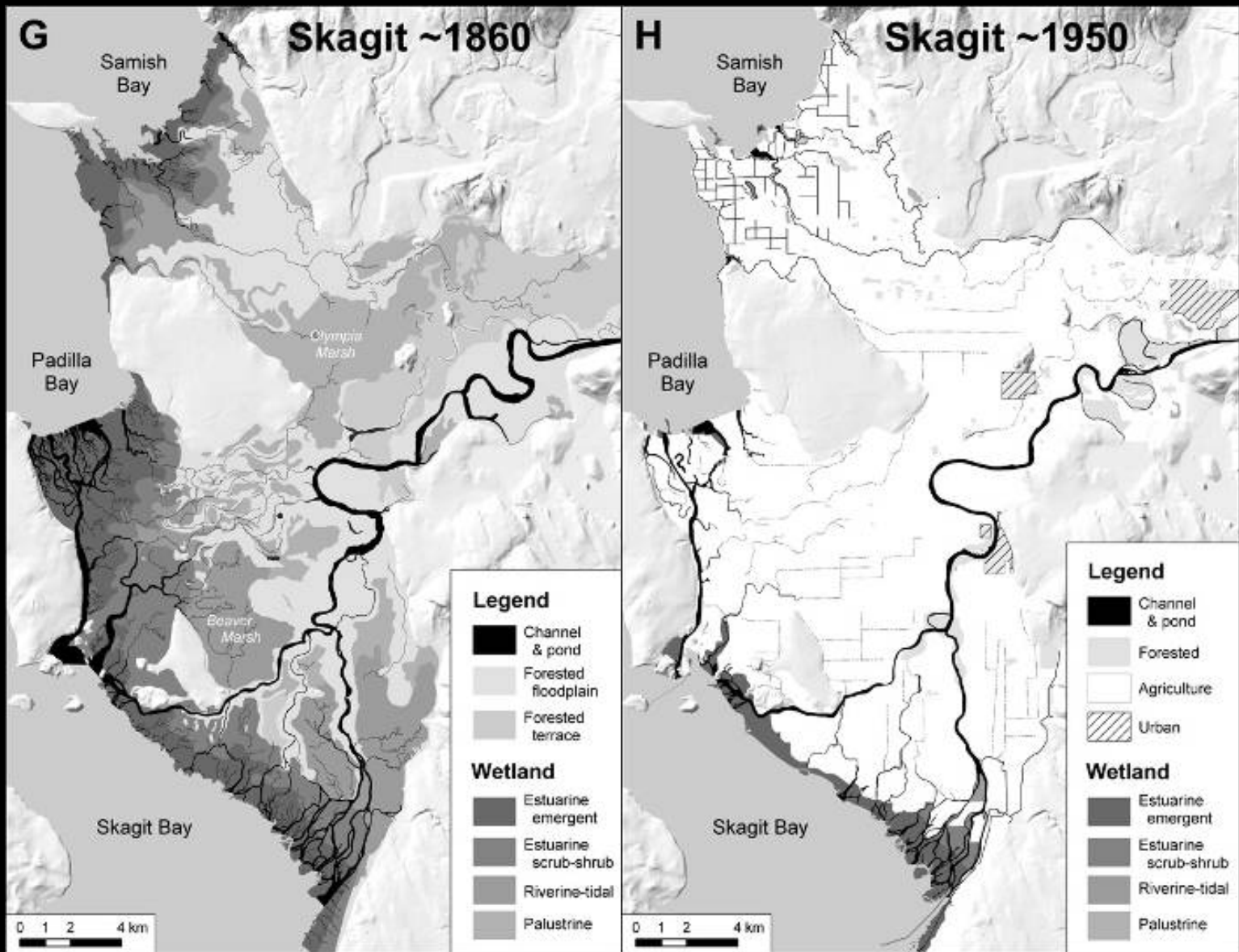
scales of imagination...

....and experience



Historical photo courtesy of Skagit Historical Museum, La Conner

...the temporal scale of American restoration discourse takes pre-Euro-American settlement conditions as its baseline...

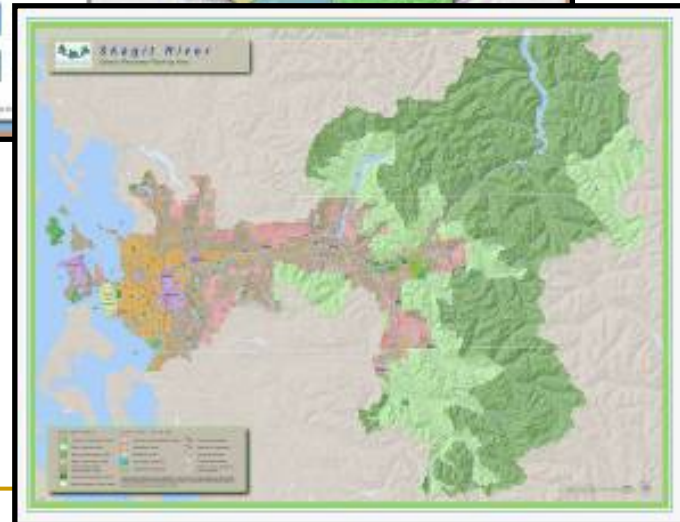
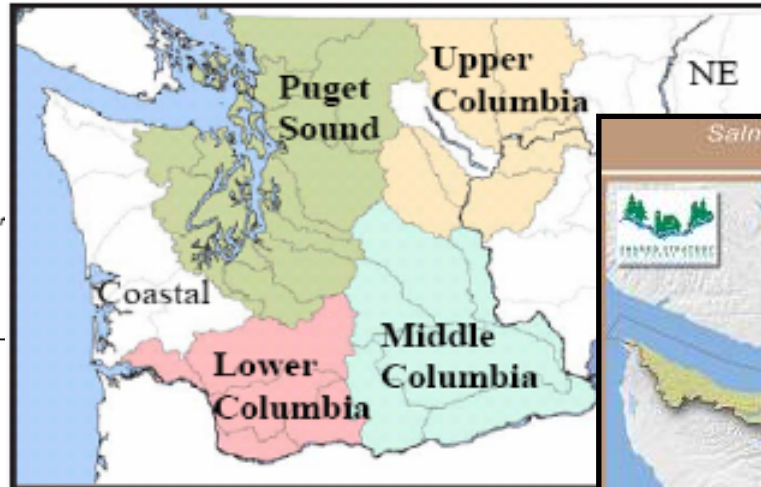
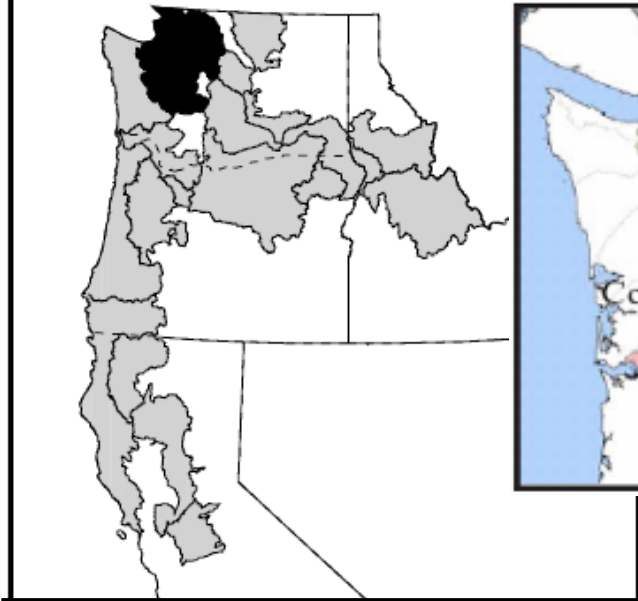


Maps courtesy of B. Collins and A. Sheikh, Puget Sound River History Project, UW

Chinook Salmon ESUs

State

Regional



Federal

“We shouldn’t be doing research that’s not relevant to our management.”

Watershed



“...if one of those tools are to use the legal approach, or if one of those tools are to use the Western science approach, so be it.”



According to the Washington Administrative Code
“*scientific information*” does not include “*legal,
social, cultural, economic and political information*”.

WAC 365-195-915

A farmers' world is largely constructed within the perimeters of his or her own farm...



*“It feels like you’re being pulled by strings from above by people who have no clue as to what’s going on. They don’t come out and LOOK at the actual situation. They don’t examine it, or do any research. It feels like people are pulling stuff out of thin air in order to
SCREW YOU.”*



Detailed narratives of subjective experience can qualify and enrich objective observations of generalizable patterns...



... and generalizations can help contextualize the narratives.



Thanks to:

Faculty Advisors:

- Eugene Hunn
- Ed Liebow
- Linda Nash
- Gene Anderson
- Tom Hinckley

Sources of Support:

- Earthwatch Institute
 - Environmental Health and Social Policy Center
 - Ford Foundation Community Forestry Research Fellowship
 - National Science Foundation
 - Society for Applied Anthropology
 - Skagit Watershed Council
 - U.S. Environmental Protection Agency
-

