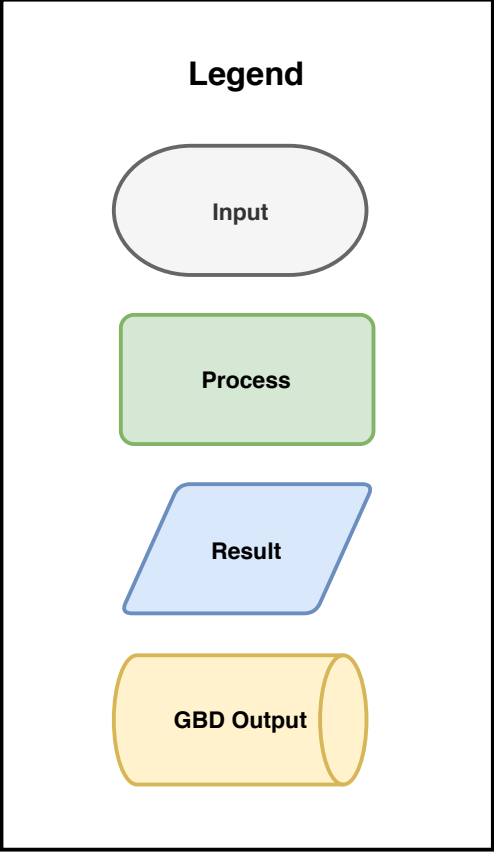
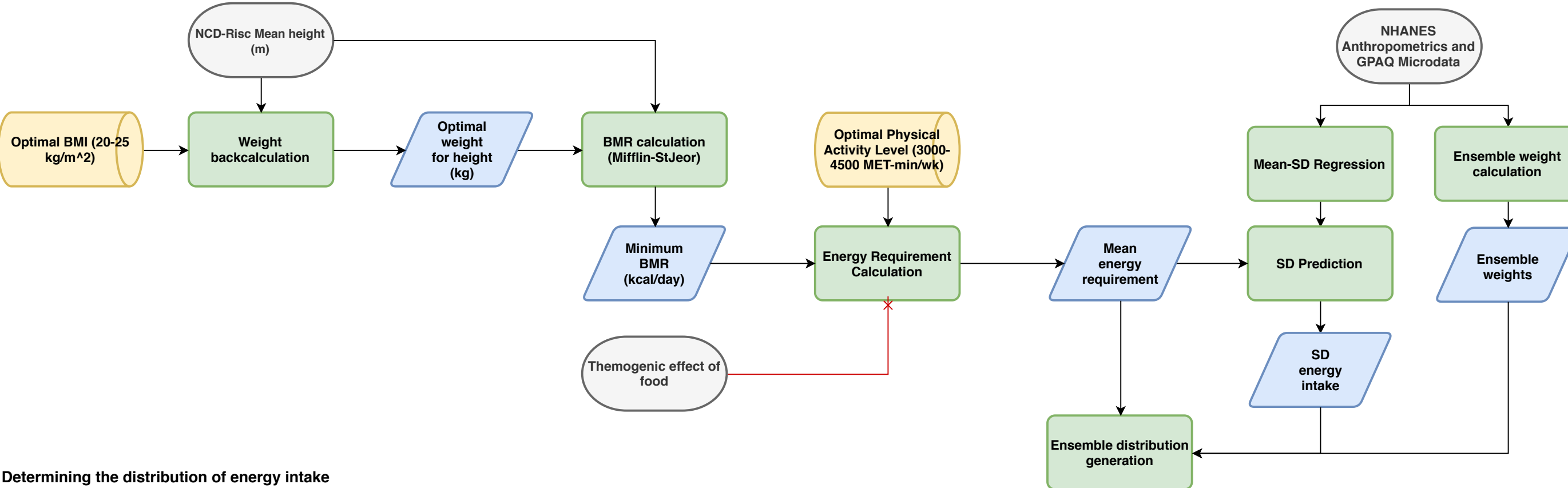
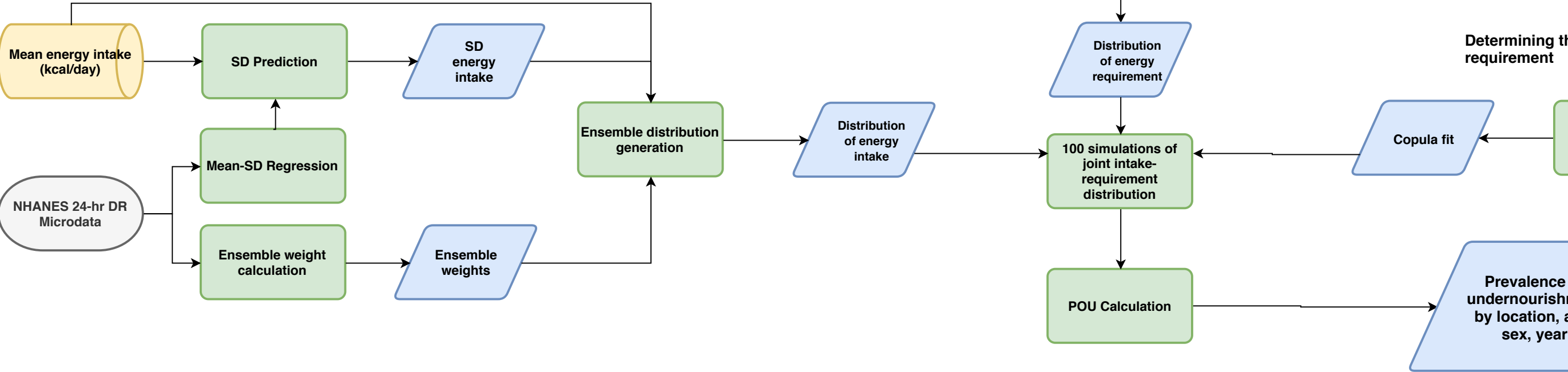


Prevalence of Undernourishment in Adults: Data and Estimation Flowchart

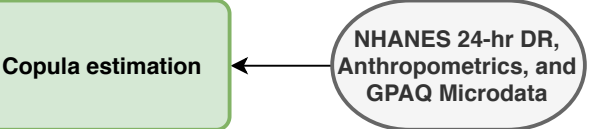
Determining the distribution of the energy requirement



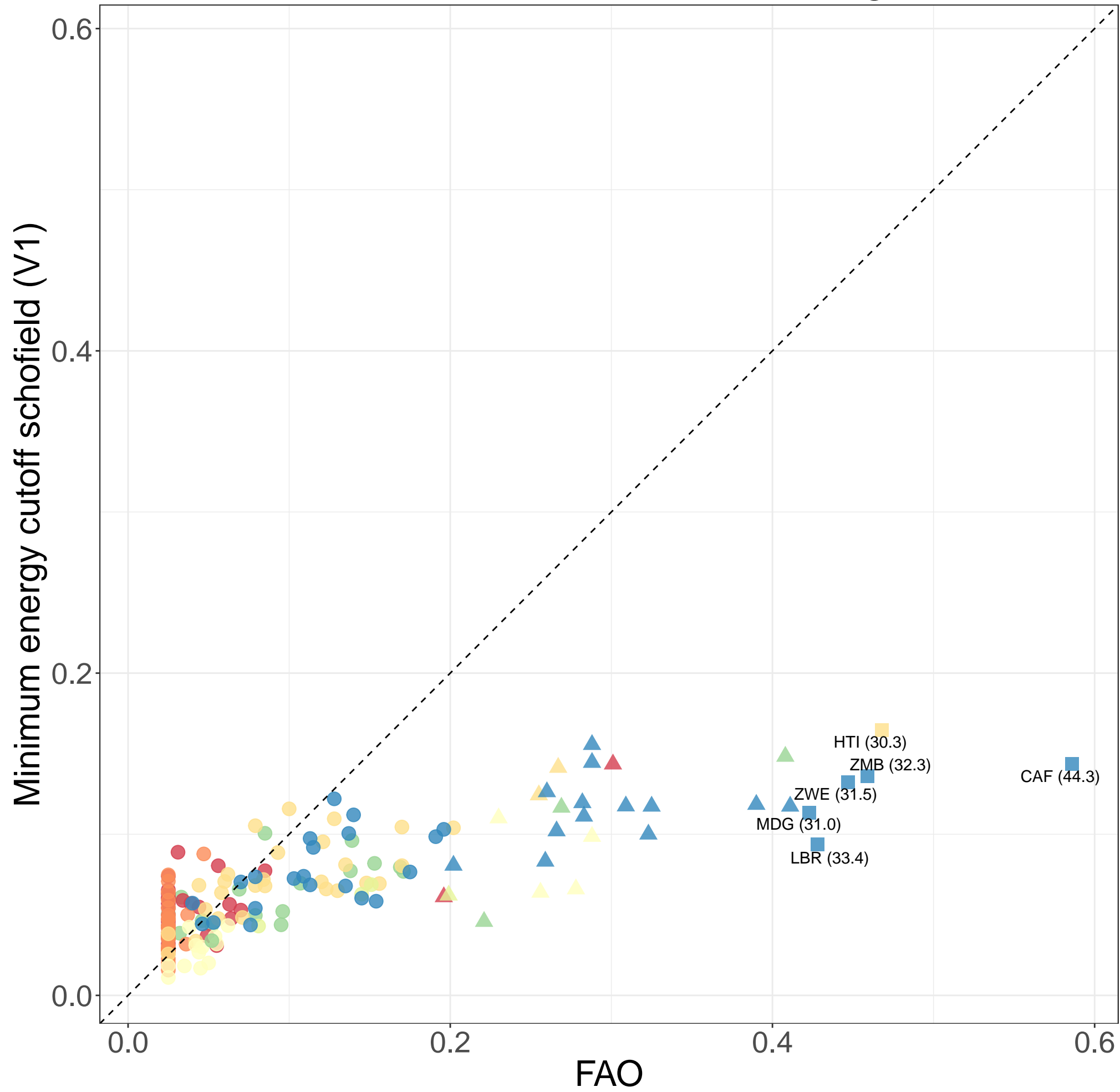
Determining the distribution of energy intake



Determining the joint distribution of energy intake and energy requirement

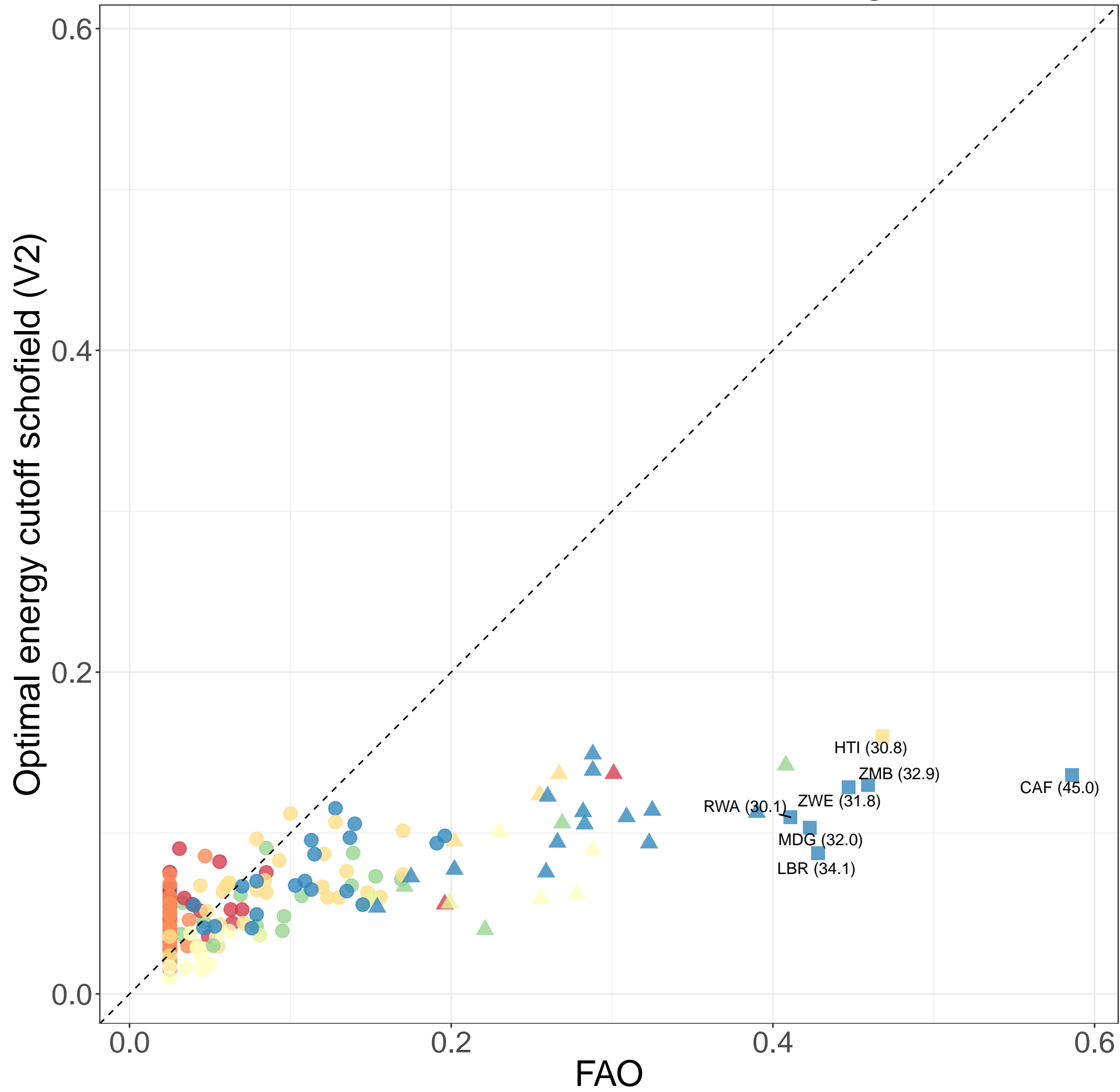


Prevalence of Undernourishment – All Ages



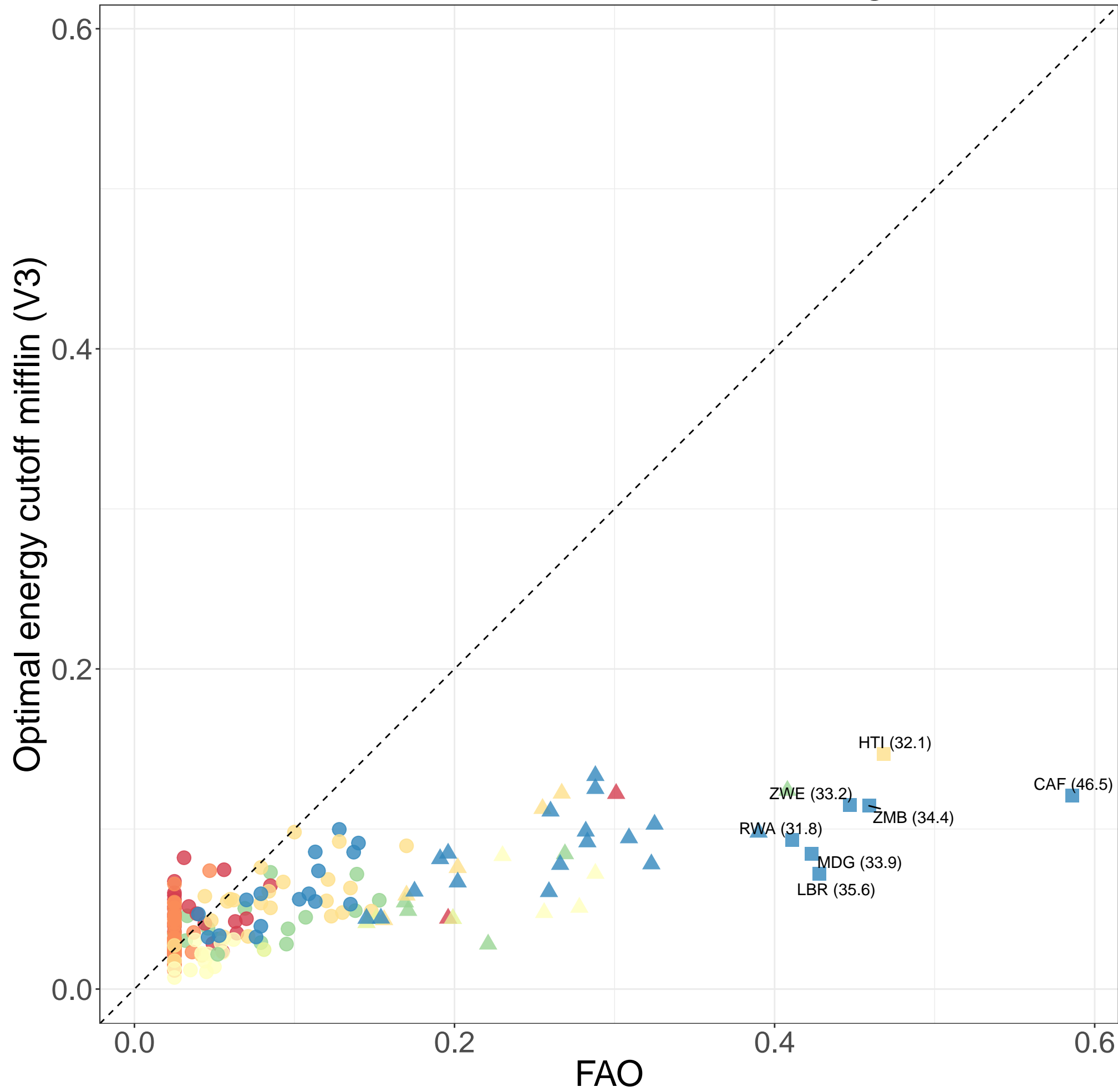
- Central Europe, Eastern Europe, and Central Asia
 - South Asia
 - High-income
 - Southeast Asia, East Asia, and Oceania
 - Latin America and Caribbean
 - Sub-Saharan Africa
 - North Africa and Middle East
- Absolute % Chg**
- 0%–9%
 - ▲ 10%–29%
 - 30%+

Prevalence of Undernourishment – All Ages



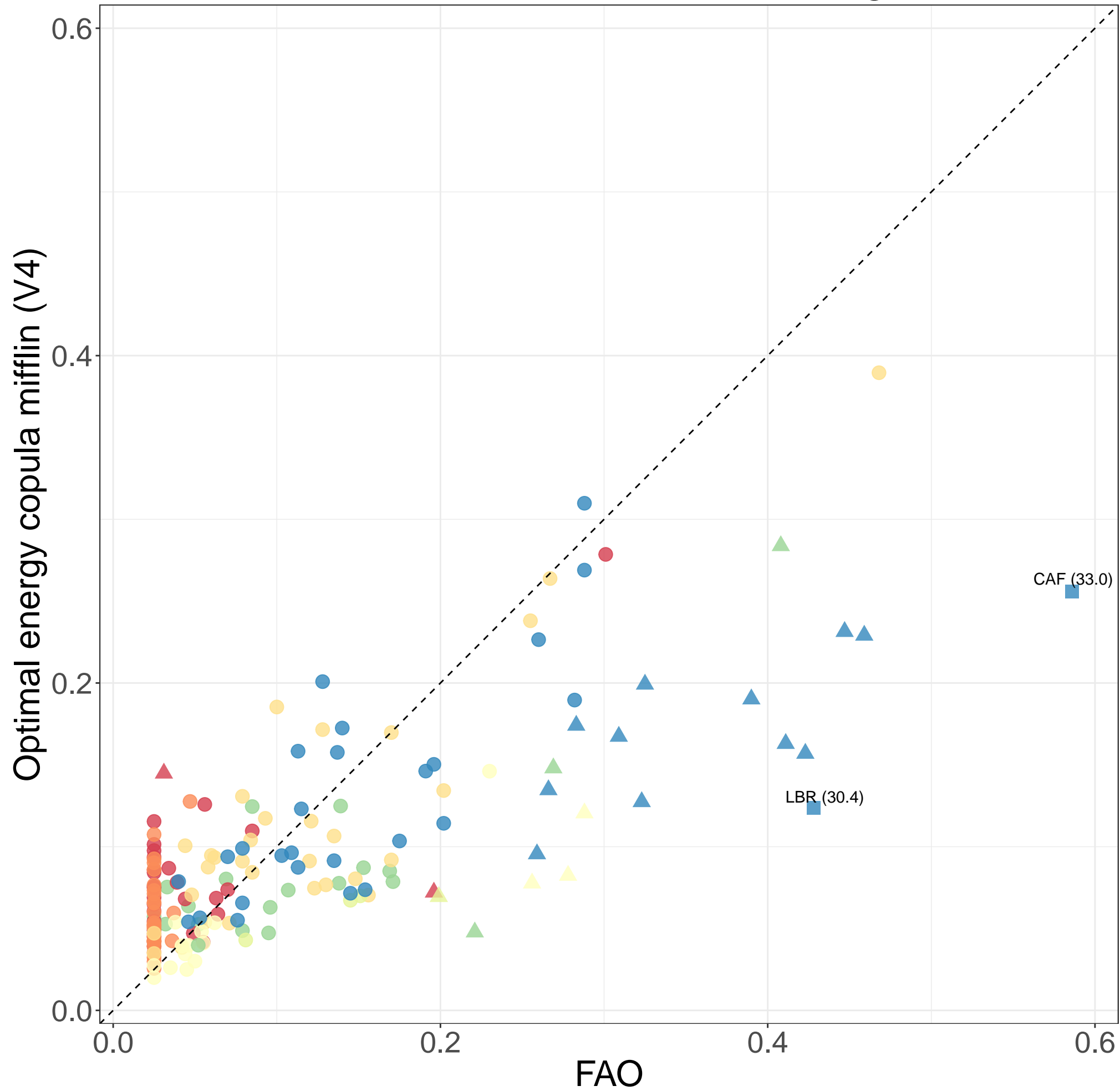
- Central Europe, Eastern Europe, and Central Asia
 - South Asia
 - High-income
 - Southeast Asia, East Asia, and Oceania
 - Latin America and Caribbean
 - Sub-Saharan Africa
 - North Africa and Middle East
- Absolute % Chg**
- 0%–9%
 - ▲ 10%–29%
 - 30%+

Prevalence of Undernourishment – All Ages

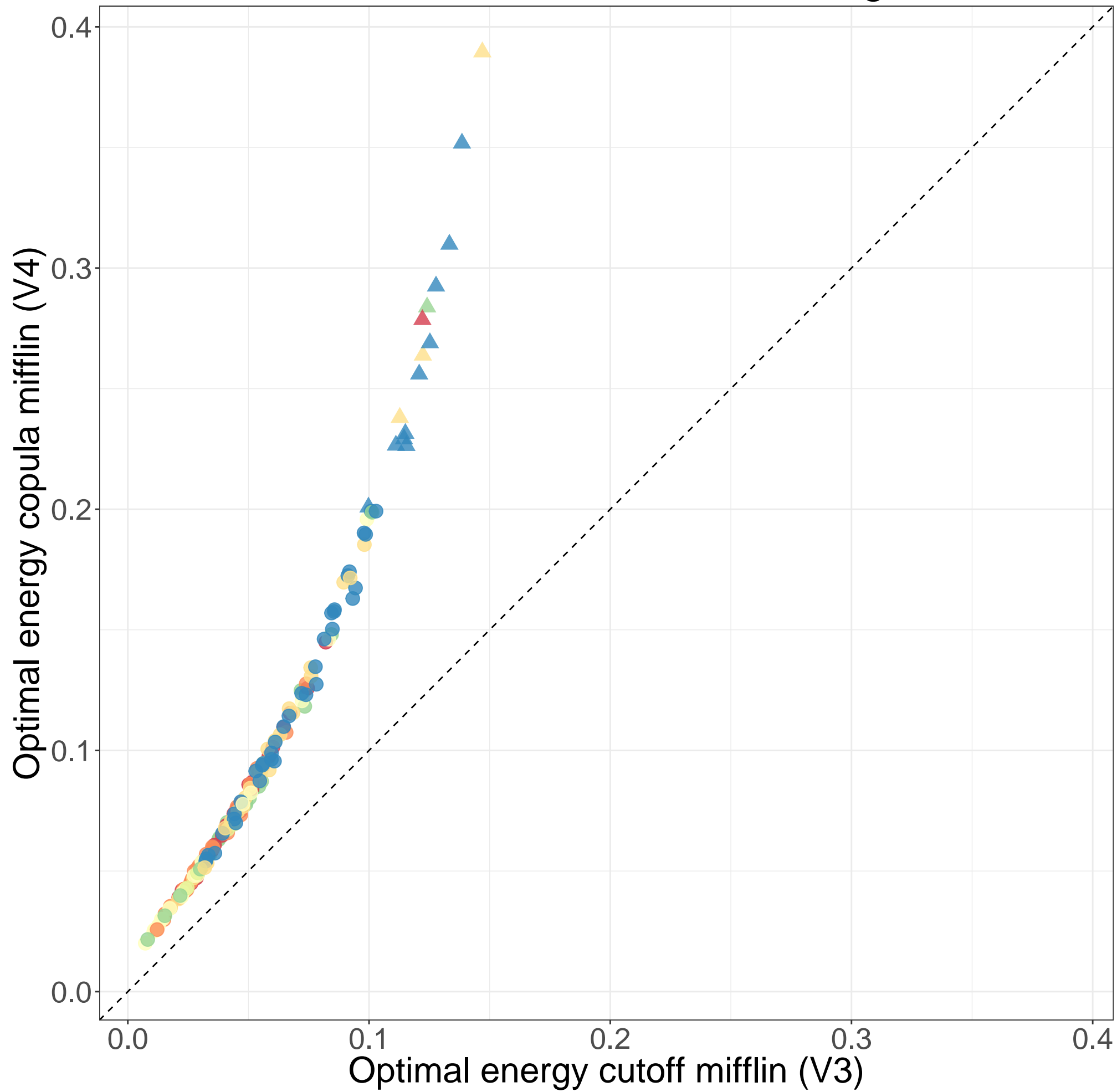


- Central Europe, Eastern Europe, and Central Asia
 - South Asia
 - High-income
 - Southeast Asia, East Asia, and Oceania
 - Latin America and Caribbean
 - Sub-Saharan Africa
 - North Africa and Middle East
- Absolute % Chg**
- 0%–9%
 - ▲ 10%–29%
 - 30%+

Prevalence of Undernourishment – All Ages



Prevalence of Undernourishment – All Ages



- | | | | |
|--|--|----------------|-----------|
| ● Central Europe, Eastern Europe, and Central Asia | ● South Asia | Absolute % Chg | ● 0%–9% |
| ● High-income | ● Southeast Asia, East Asia, and Oceania | | ▲ 10%–29% |
| ● Latin America and Caribbean | ● Sub-Saharan Africa | | |
| ● North Africa and Middle East | | | |