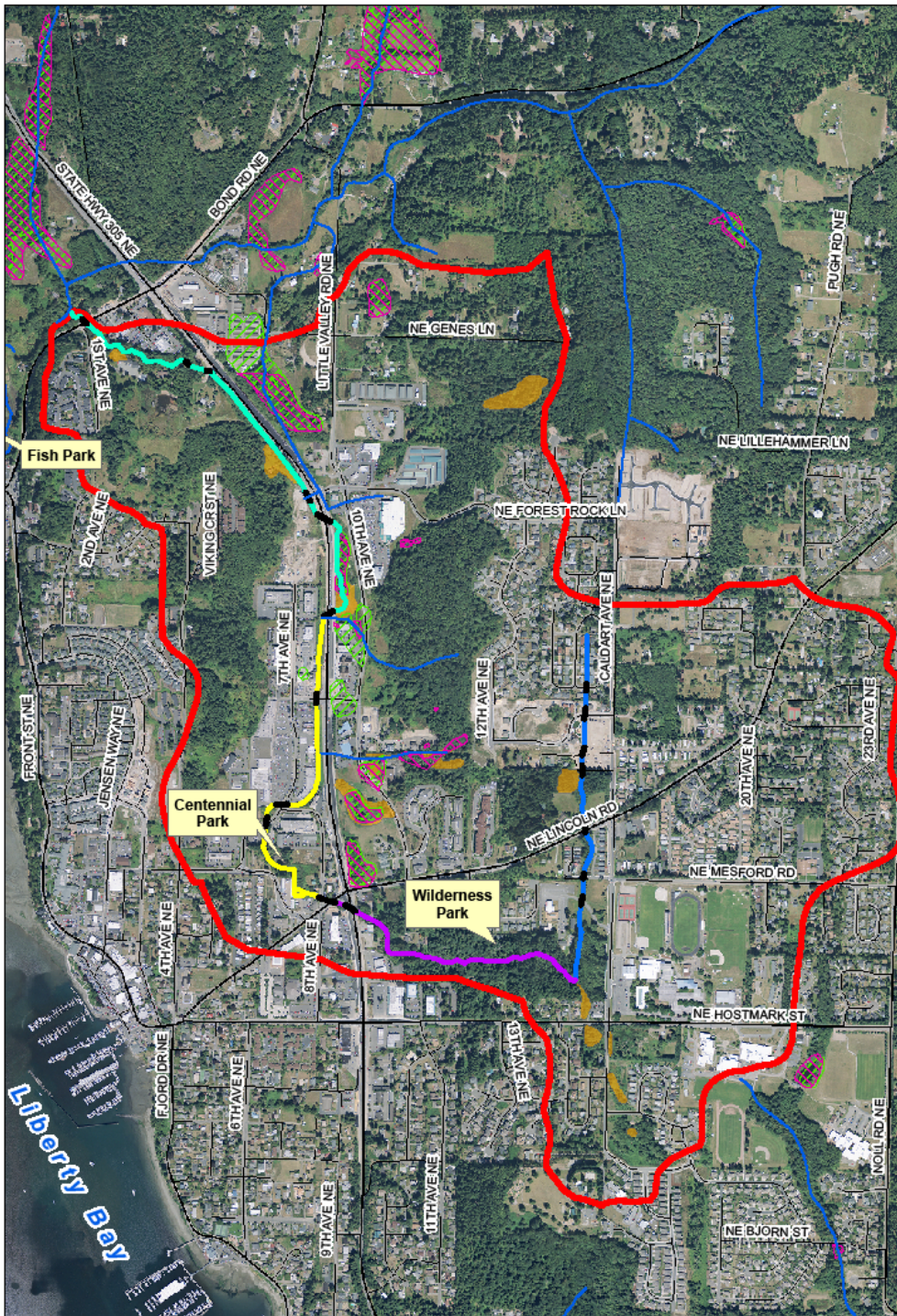


Implementing a Watershed Approach

- Do you have clear goals and can you stick to them?
- Go get data on basin hydrology, hydraulics, geomorph *and* biology
- Put the basin first, *then* temper ideas with 'reality'
- Collaborate, but *make decisions*



Small City in Kitsap County

- Basin boundary
- Channel alignment, stream reaches
- Wetlands
- Property ownership
- Stormwater system
- Culverts

Flood reduction /increases detention

- 4 = large scale, direct benefits throughout or high in watershed (above SR 305)
- 3 = direct benefits low in watershed (below SR 305) or high in watershed but limited in scale
- 2 = indirect benefits, throughout or high in watershed
- 1 = indirect benefits, low in watershed

Weighted 1.5 times due to lack of detention in basin and degree of flooding

Improves salmonid habitat

- 4 = direct benefits to multiple life history stages
- 3 = direct benefits to single life-history stage
- 2 = indirect benefits landscape scale
- 1 = indirect site-specific scale benefits

Weighted 1.1 times due to desire to restore anadromous salmonids, which would also improve conditions for native fresh-water mussels

Prioritization Matrix Factors & Projects/Actions Ranked by Reach

Relative weighting	(x1.5)	(x1.3)		(x1.1)								(x1.2 if >1)		
Total points possible	6	5.2	4	4.4	4	4	4	4	4	4	4	4.8	4	56.4
Scale: 4=high, 1=low	Flood reduction/increases stormwater detention	Water quality improvement/increases stormwater treatment	Improves infiltration	Improves salmonid habitat	Improves fish and wildlife habitat	Minimizes impacts to existing resources	Provides educational or outreach potential	Time to implementation	Low Relative Cost	Low operation &	Construction Feasibility	Aligns with grant funding priorities	Provides recreational opportunities or links	Total Weighted Points
Basinwide/Programmatic Actions														
Increase enforcement of critical areas regulations reg buffers and clearing streams and wetlands (increased staff to conduct enforcement)	2 (3)	4 (5.2)	4	2 (2.2)	2	4	3	4	4	2		1		34.4
Develop diffuse stormwater management program (e.g. raingardens, curb bumpouts, medians etc.) for new construction and existing upper basin parcels	3 (4.5)	3 (3.9)	3	2 (2.2)	2	4	4	2	2	2		3 (3.6) (C)		33.2
Develop critical areas/watershed functions training program	2 (3)	2 (2.6)	2	2 (2.2)	2	4	4	4	4	2		2 (2.4) (C)		32.2
Reach 1 – headwaters														
St. Olaf's church: Stream channel, floodplain, riparian zone & wetland restoration	3 (4.5)	3 (3.9)	3	2 (2.2)	4	3	2	3	3	3	3	4 (4.8) (C, D, E, H)		39.4
High school demonstration rain gardens; bioswales, native landscaping demonstration project	3 (4.5)	3 (3.9)	3	2 (2.2)	3	4	4	3	3	2	3	2 (2.4) (F, I, L)	2	38
Harold's property: Stream channel, floodplain, riparian zone & wetland restoration	3 (4.5)	3 (3.9)	3	2 (2.2)	4	2	1	3	2	3	3	4 (4.8) (C, D, E, H)		36.4
Reach 2A- Upper Wilderness Park														
Install grade control log/boulder structures in Wilderness Park	2 (3)	2 (2.6)		2 (2.2)	1	2	2	3	3	4	1	1	4	28.8
Install educational signage regarding stream and forest ecology						3	4	4	4	3	4	2 (2.4) (F, I, L)	4	28.4

Timeline and Feasibility

Shorter Timeline

- 4 = <2 years
- 3 = 2-3 years
- 2 = 4-6 years
- 1 = >6 years

Feasibility

- 4 = publically owned land, few construction issues
- 3 = largely private, but potentially willing partners
- 2 = private, unknown interest
- 1 = construction challenges or unwilling private owner

Costs and Funding Considerations

Low Relative Costs

- 4 = <\$50k
- 3 = \$50-100k
- 2 = \$100-200k
- 1 = >\$200k

Aligns with Funding

- 4 = aligns with several grant sources
- 3 = aligns with specific grant source
- 2 = aligns with general objectives of funding groups
- 1 = not aligned with currently known/available grants

On the Ground Implementation

- Think **big** –watershed's aren't 'in a box'
- Think **linked** –engineers, hydrologists, public involvement specialists are your friends
- Think **long-term** – it takes time to erode mountains, stay committed
- Think **local** – local knowledge, local perspectives, public support are critical
- **THINK**, talk, discuss – don't give up!

Be the Change You Want to See

Solution-Oriented

- New approaches require creativity and imagination
- New approaches aren't anticipated by old rules
- Advocates open doors to good ideas
- What's best is seldom what's easy
- Assume good intentions and listen openly

Problem-fixated

- But we've never done it that way before
- The code, REGLs, etc. doesn't address that
- My boss, the council, the public, won't like it
- I'll have to work harder to do this
- I don't like you ... so I'm not interested

Everyone DOES Make a Difference



- A watershed approach is only as good as the local actions it generates!