

Analysis of Liquor Outlets for Downtown Puyallup, and Youth at Risk

University of Washington, Tacoma, GIS Certification Program, Live Free Coalition.
 Tamra Lemoncelli 2010

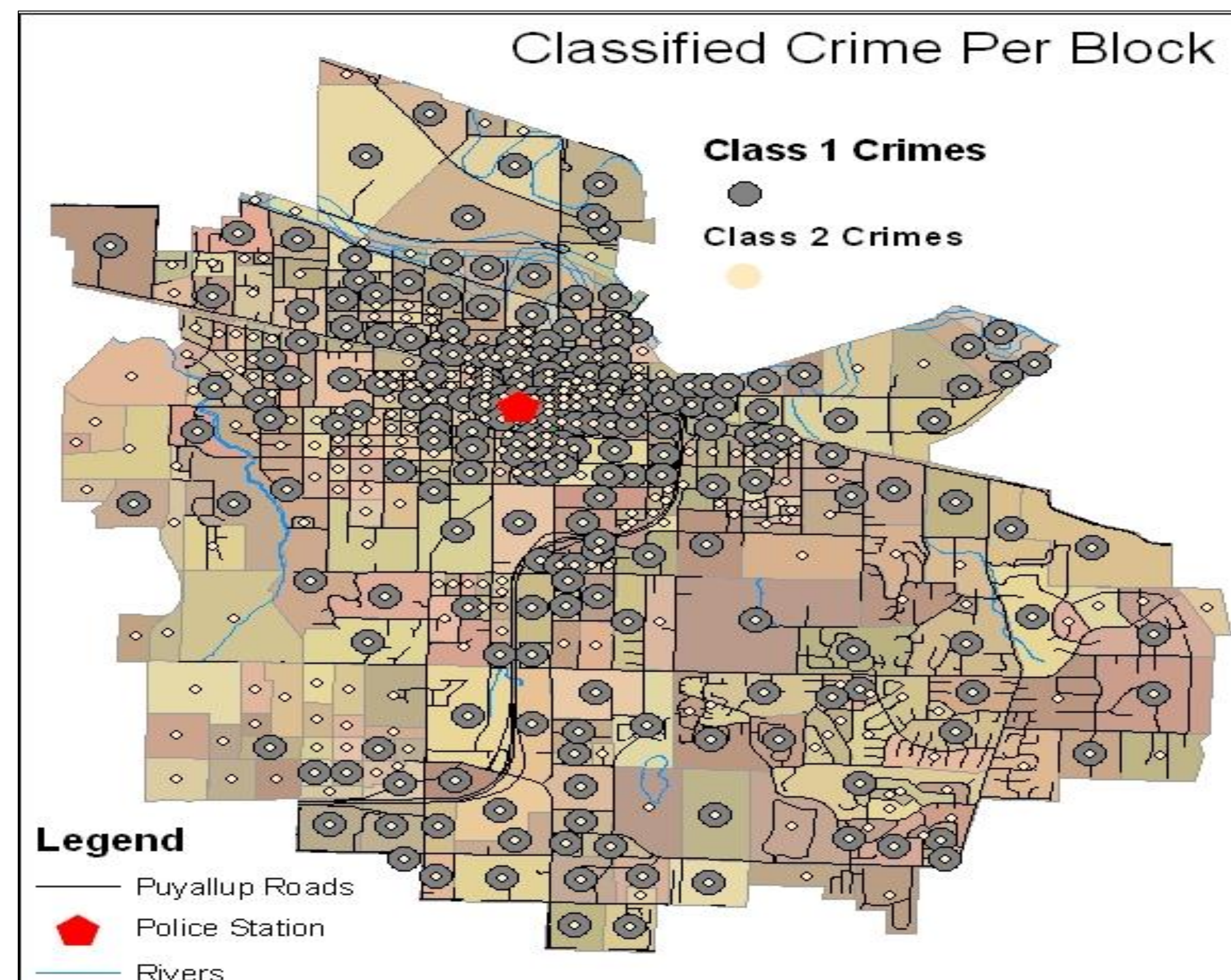
Purpose

Does the location of liquor outlets in Puyallup place kids at risk for juvenile delinquency? The theory was the higher the density of liquor outlets in a closer proximity to schools increased youth at risk. Data has been shown to prove the theory. The data collected for this research project has shown there is limited criminal activity in the location of liquor outlets.

Processes

The first process for analysis was to gather data from the census bureau, geo-code liquor outlets, locate schools, parks, roads, and receive crime data from the Puyallup Police Department. Identification of crime beat areas was linked to the census block information and spatially joined all the data together to create a final data table with crime rate. This was used in the analysis to visualize the highest density of crime and to the

This map shows the block groups of downtown Puyallup.



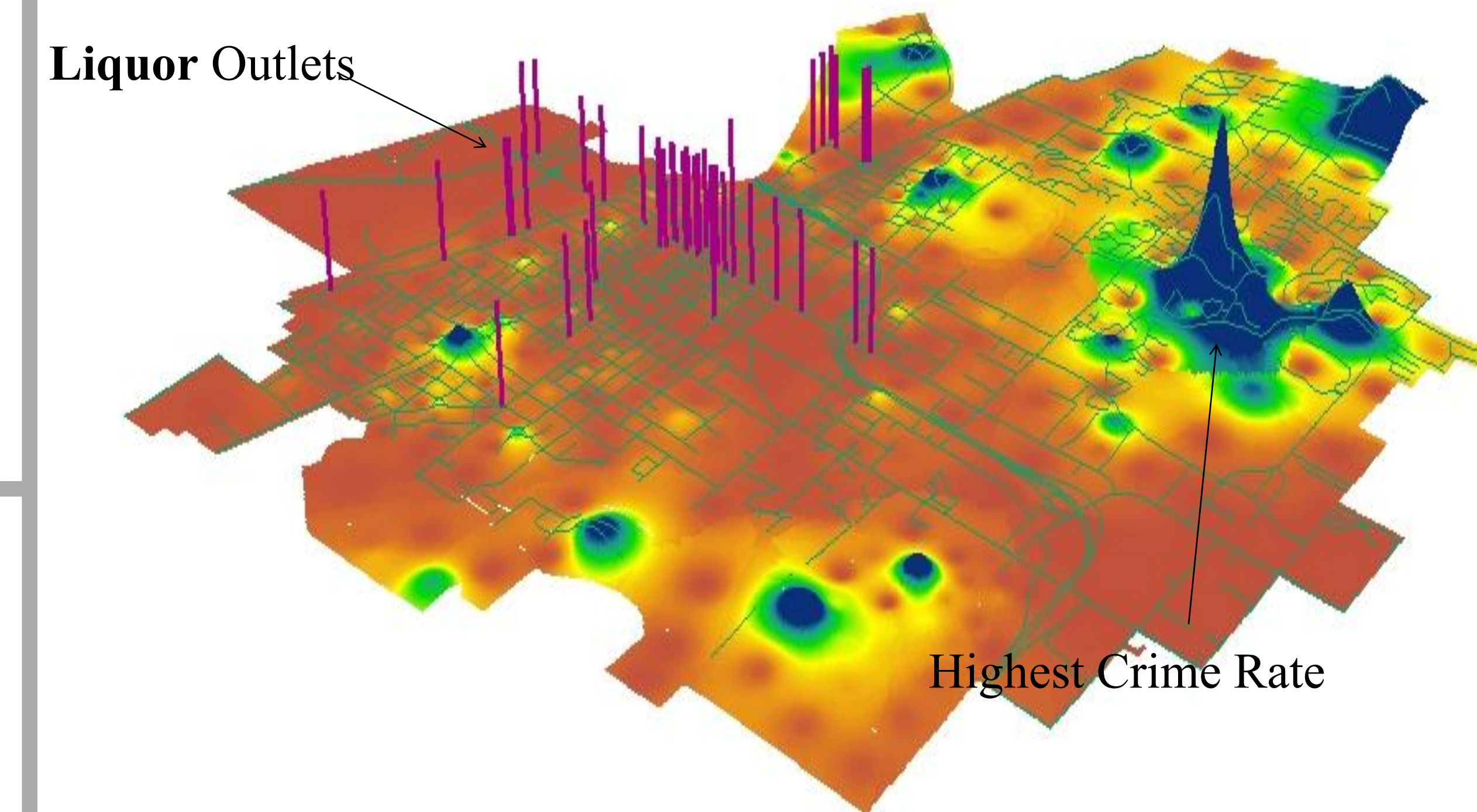
The crime points are either single by class 1 single by class 2 or combined class 1 and 2.

Class 1= Non-Violent
 Class 2 = Violent

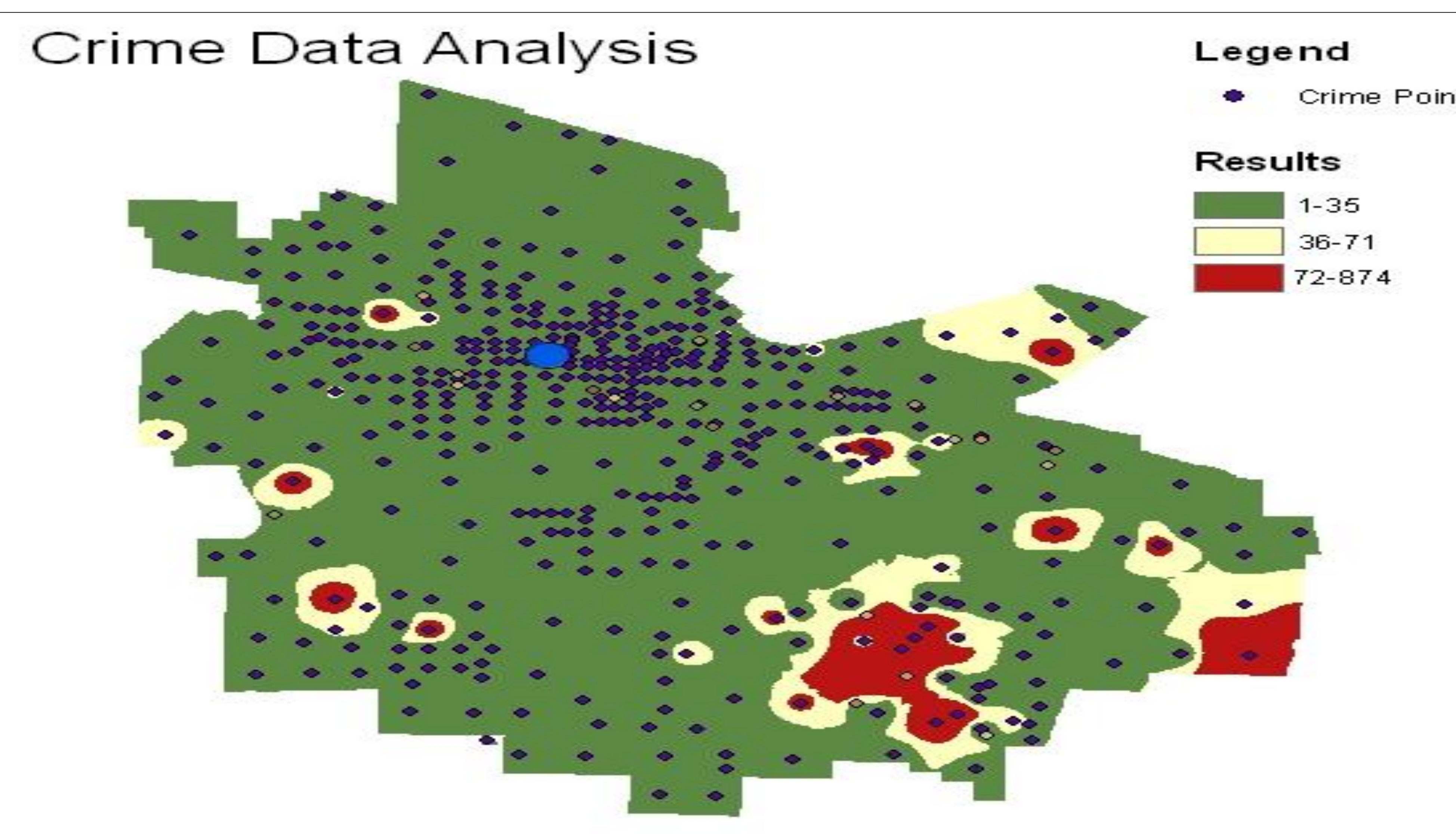
Analytical approach and methods

The methods used were spatial join, IDW, field calculator, 3D analysis, classifications, geo-coding, building databases and symbology of maps produced for visual display.

3D Analysis: Liquor Outlets, Crime

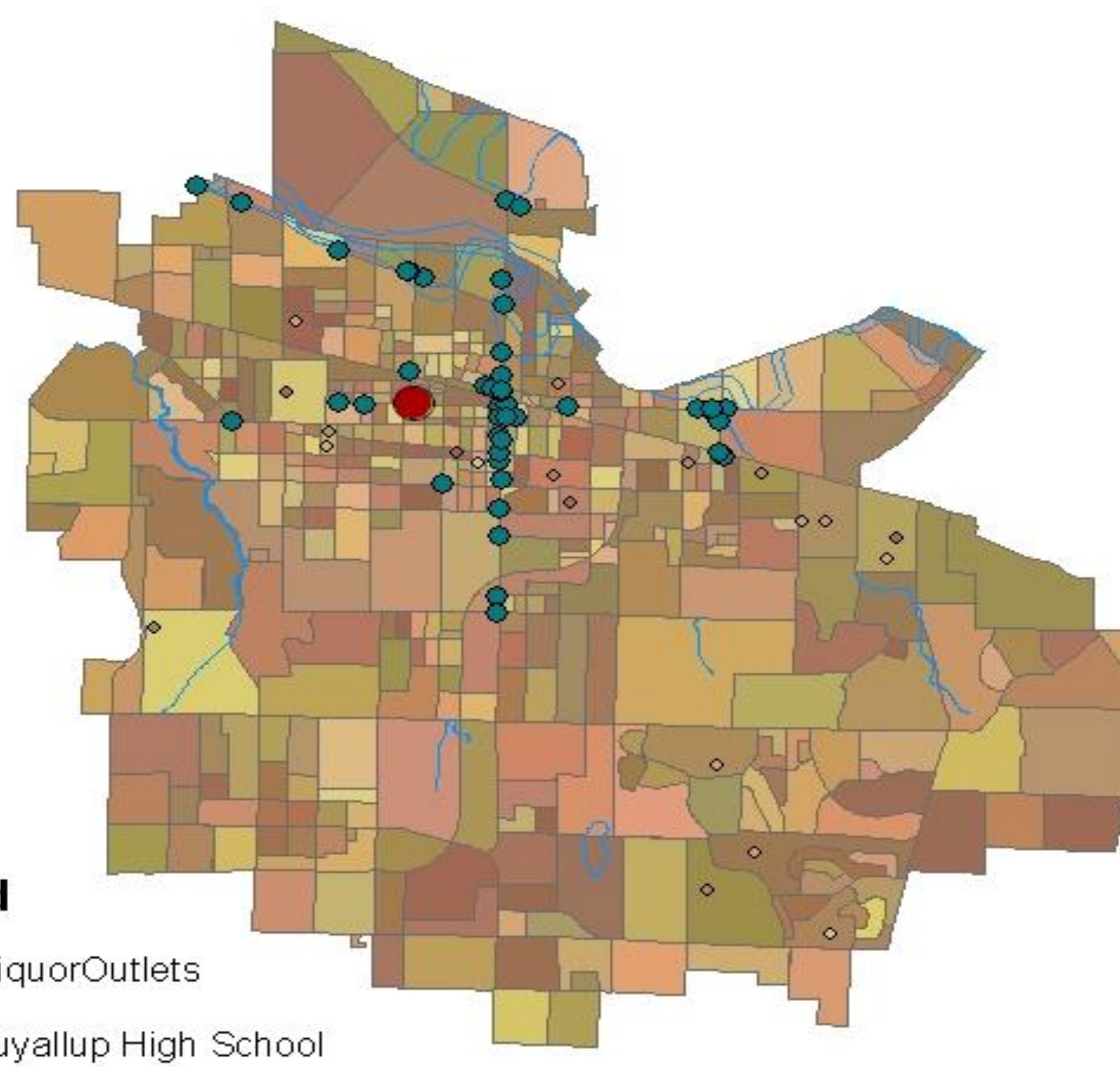


Analysis



The analysis shows the heaviest amount of crime in red. Although the analysis shows there is crime all over downtown Puyallup the highest incidents are not in proximity to liquor outlets or Puyallup High School. This analysis does not determine that youth at risk is reduced or there is less incidents of juvenile delinquency. The examination of data needs to be considered as partially flawed due to the information received on crime data. Without the age of the criminal it is difficult to determine if the rates of crime for youth is affected by the density of liquor outlets.

Liquor Outlets in Puyallup



Key literature, sources, links:

- Census Bureau
- WAGDA
- City of Puyallup
- Police Department
- Washington State Liquor Board
- Multi care

Date and Acknowledgement: I would like to thank, Dr, Matt Kelley, Live Free Coalition, Multi-care and the Nursing program at the University of Washington. I also would like to let all my fellow classmates how much I appreciate all their help in the completion of assignments and this lab.