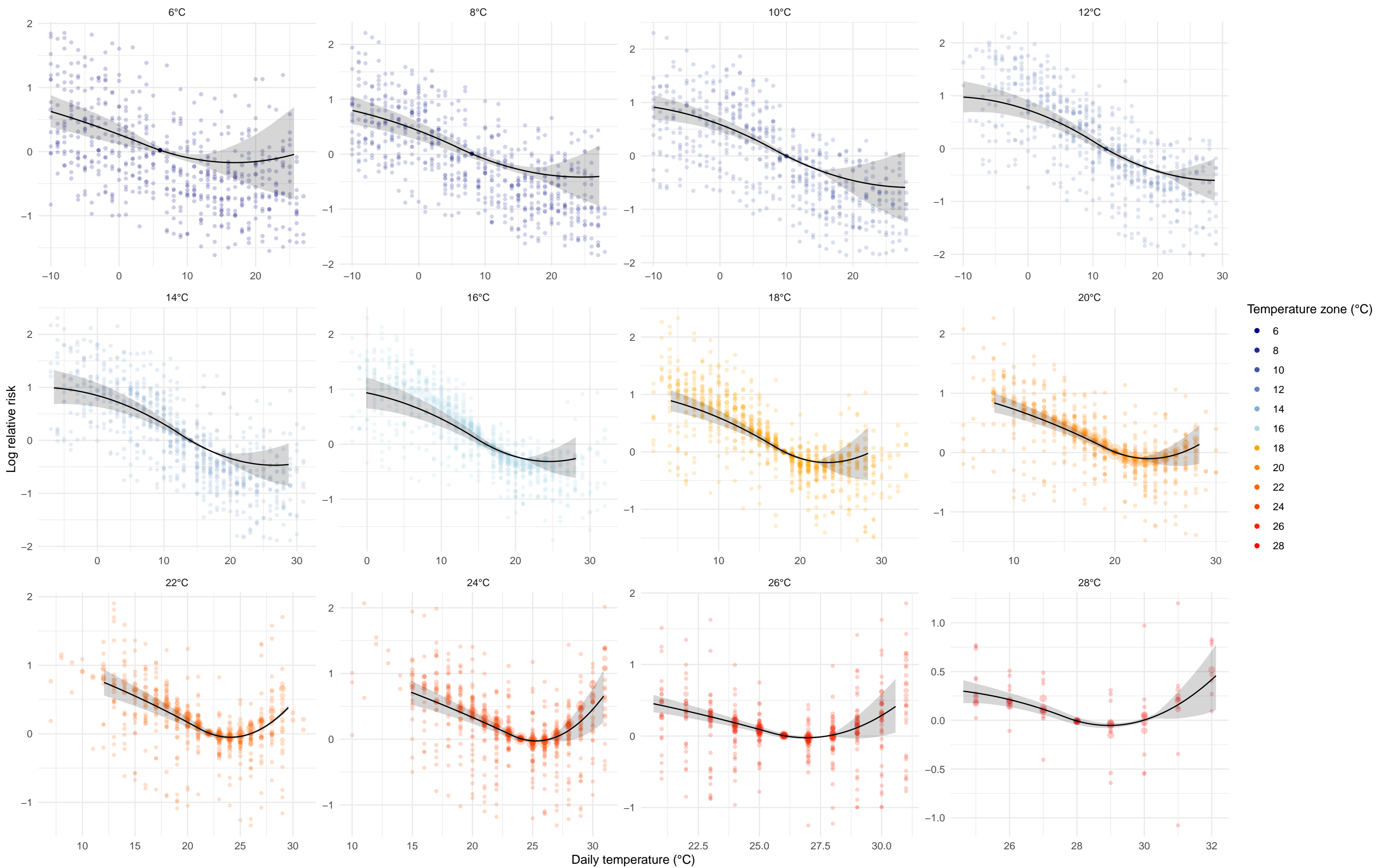
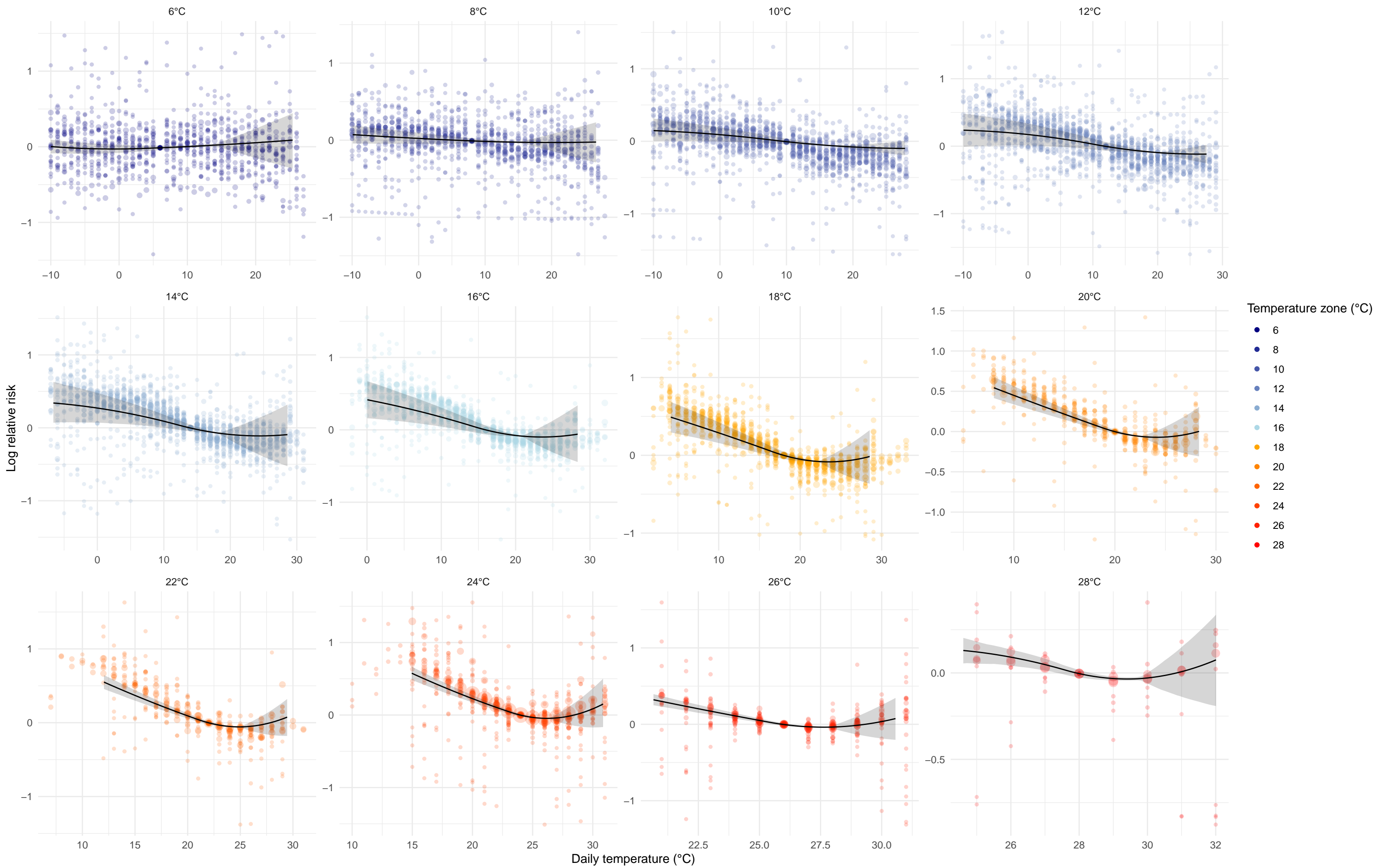


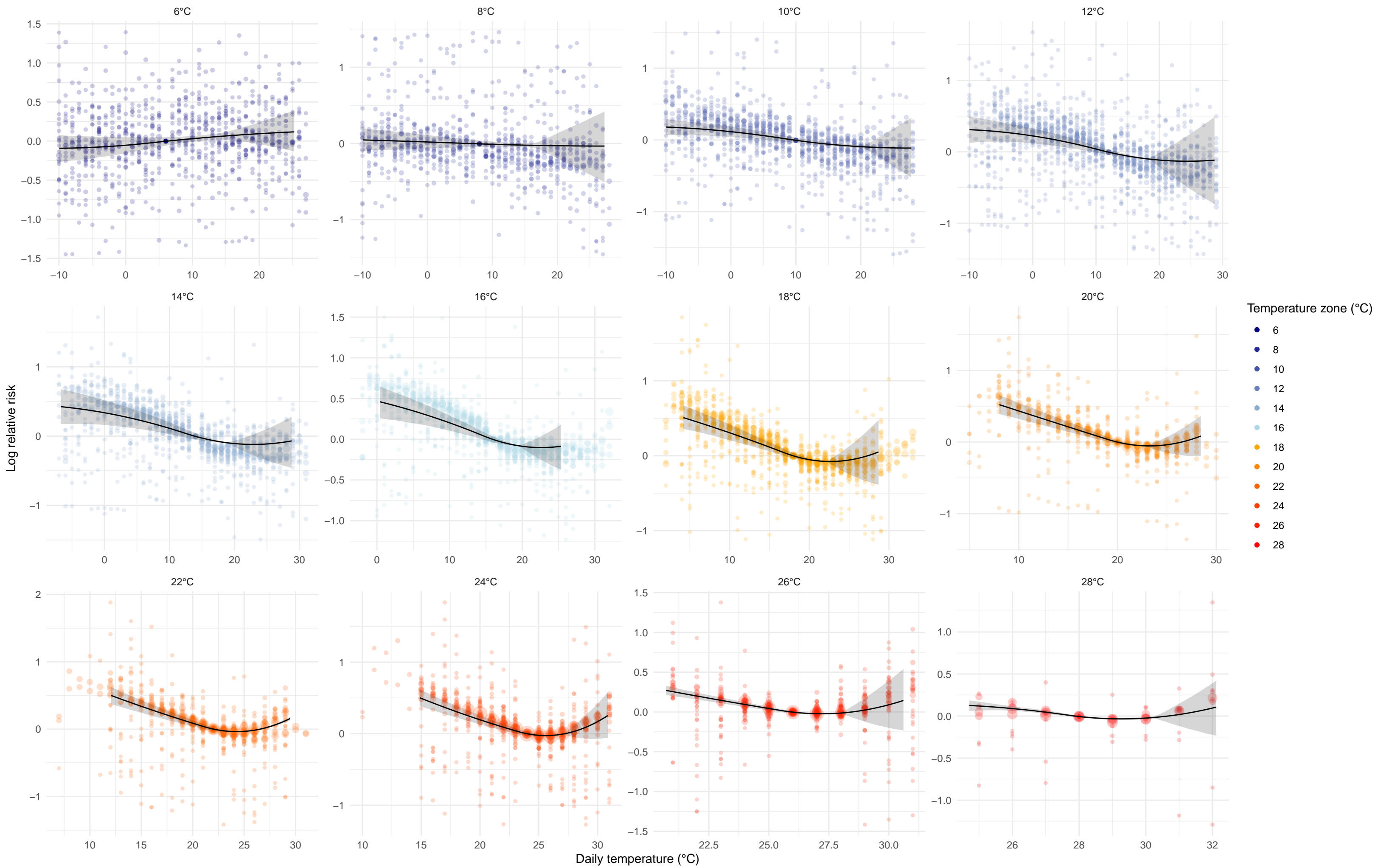
Lower respiratory infections



Ischemic heart disease

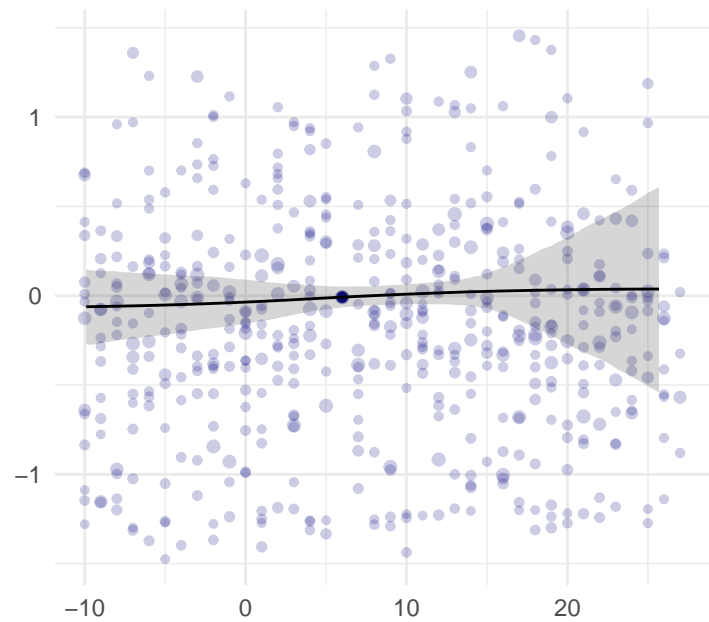


Stroke

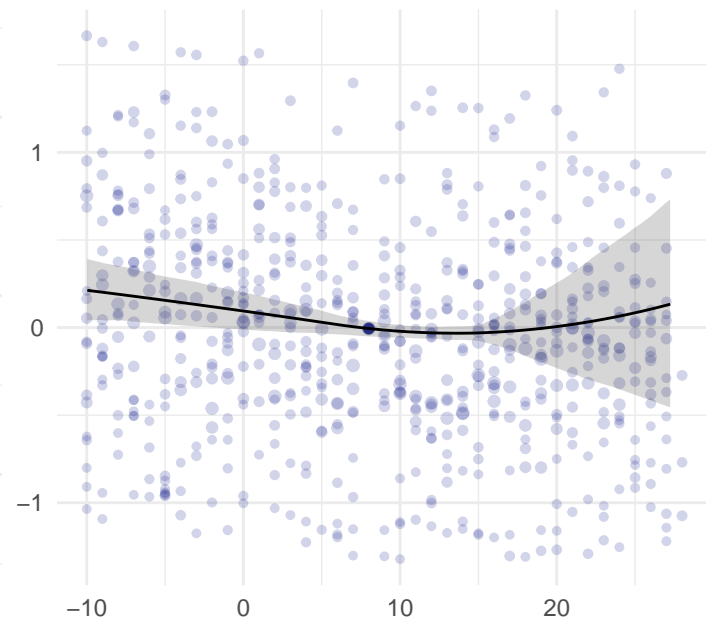


Hypertensive heart disease

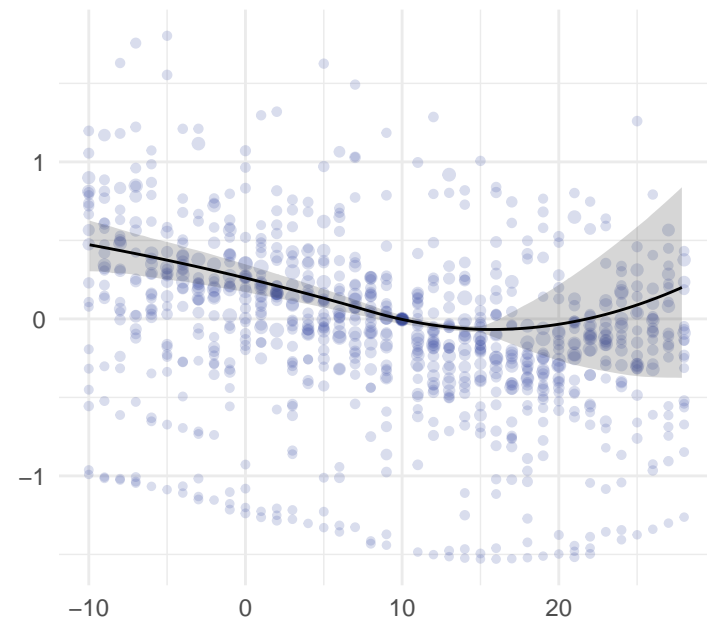
6°C



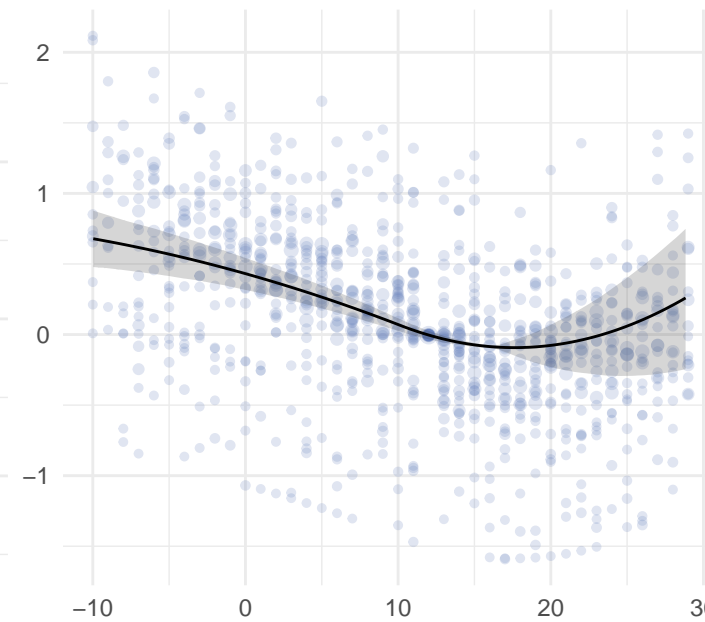
8°C



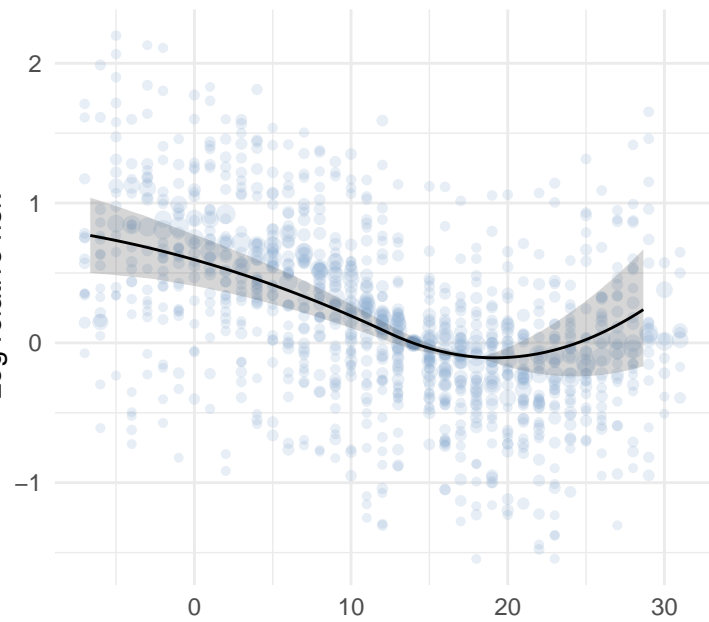
10°C



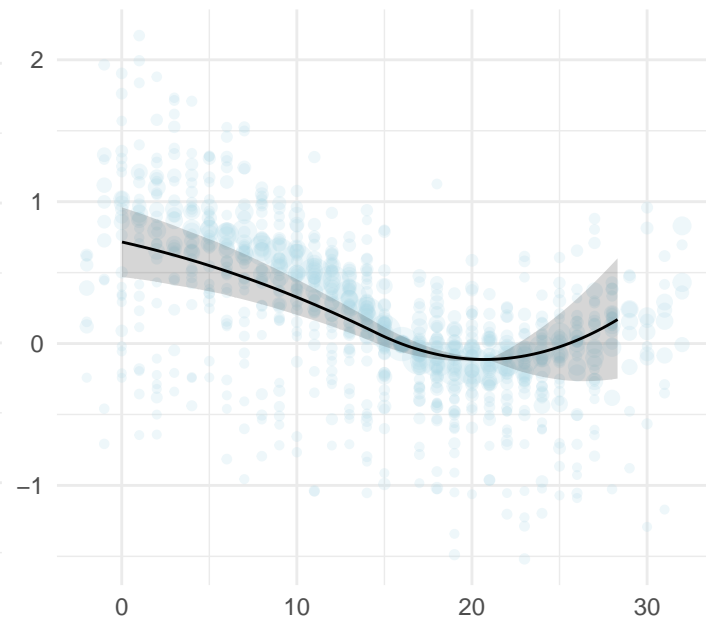
12°C



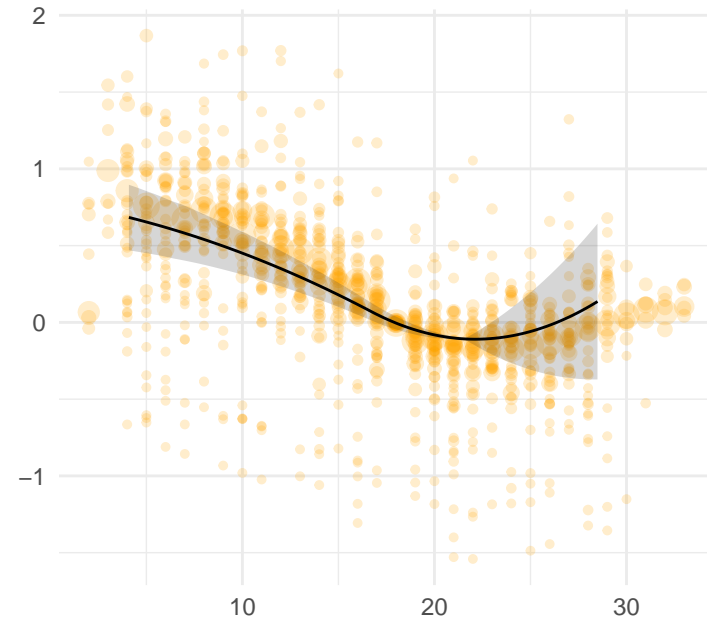
14°C



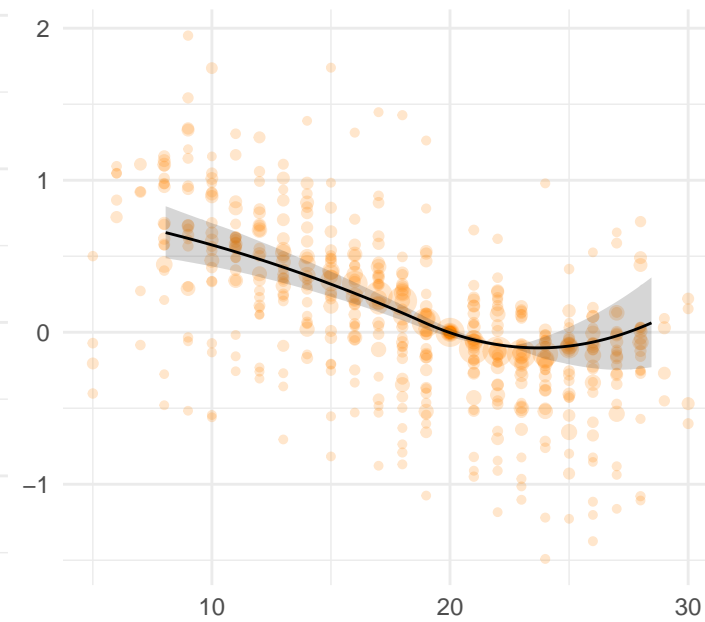
16°C



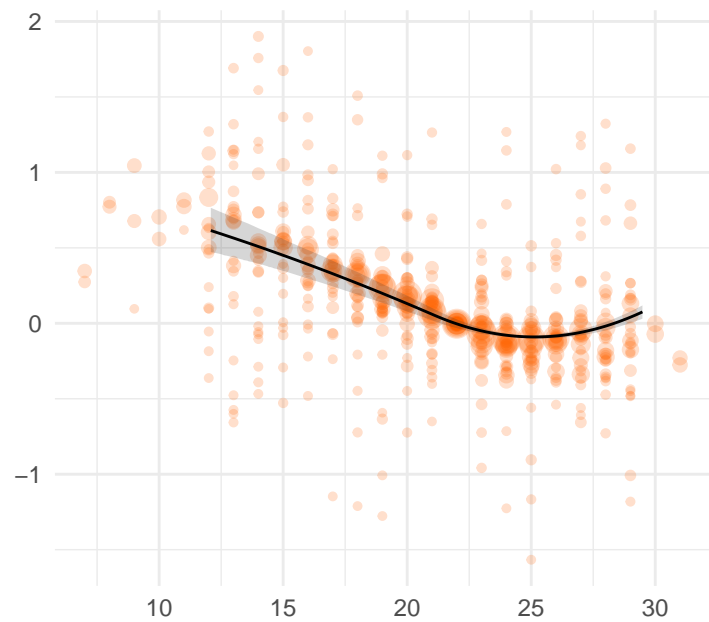
18°C



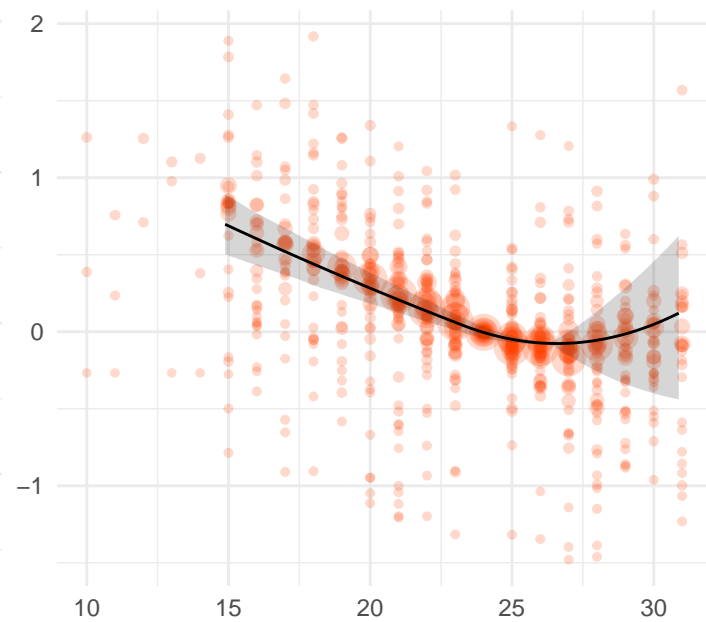
20°C



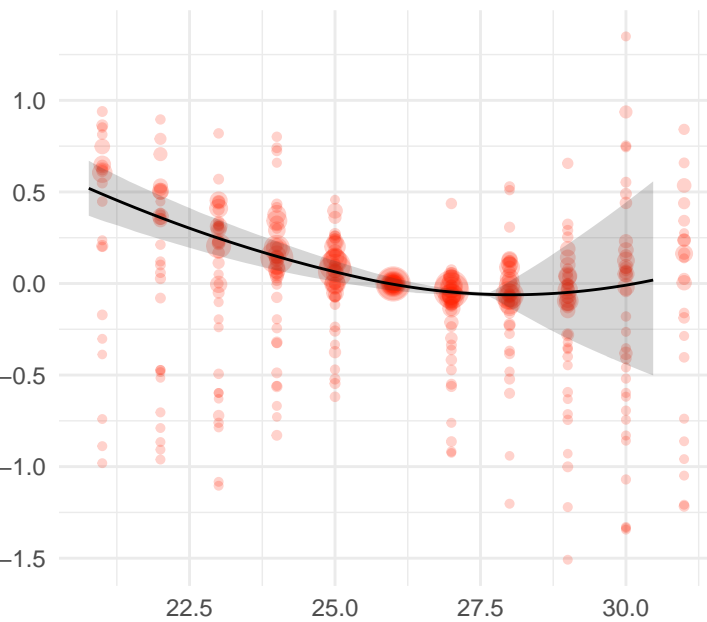
22°C



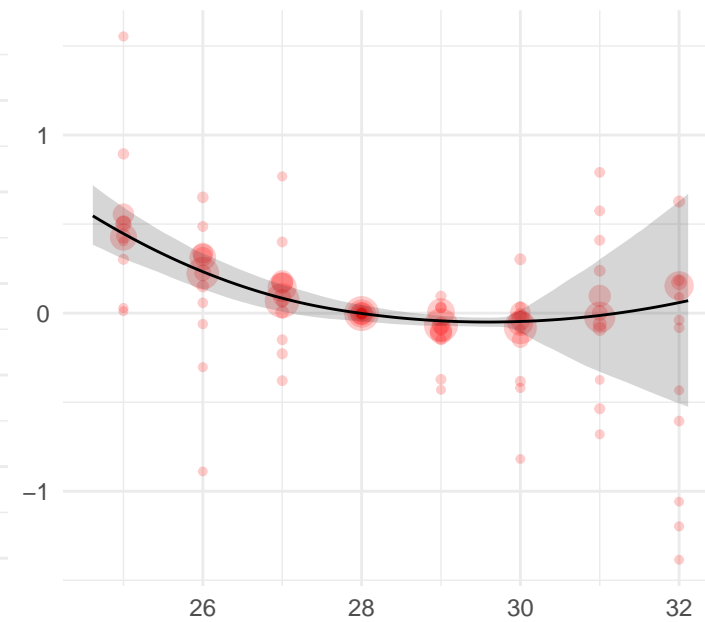
24°C



26°C



28°C

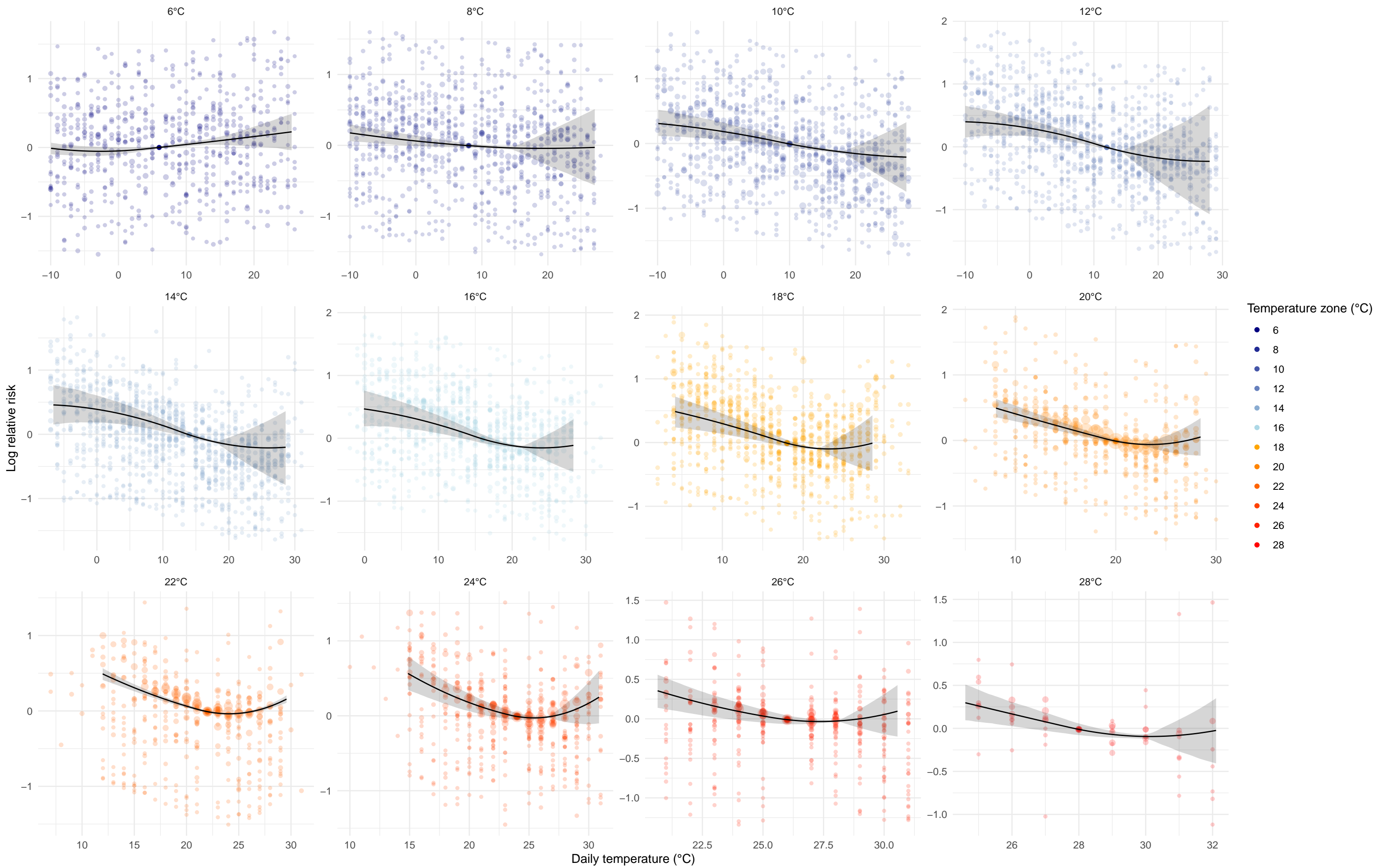


Temperature zone (°C)

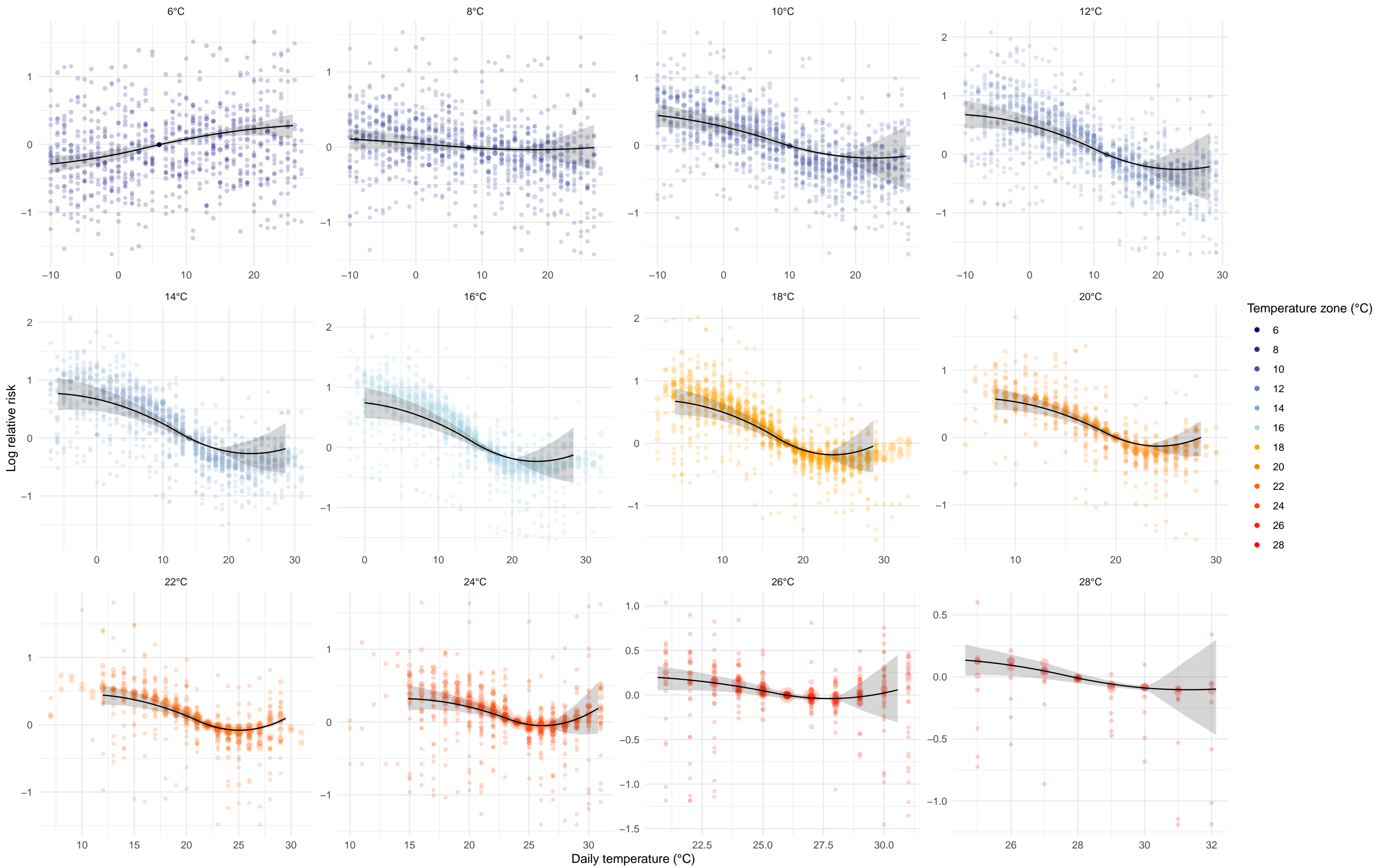
- 6
- 8
- 10
- 12
- 14
- 16
- 18
- 20
- 22
- 24
- 26
- 28

Daily temperature (°C)

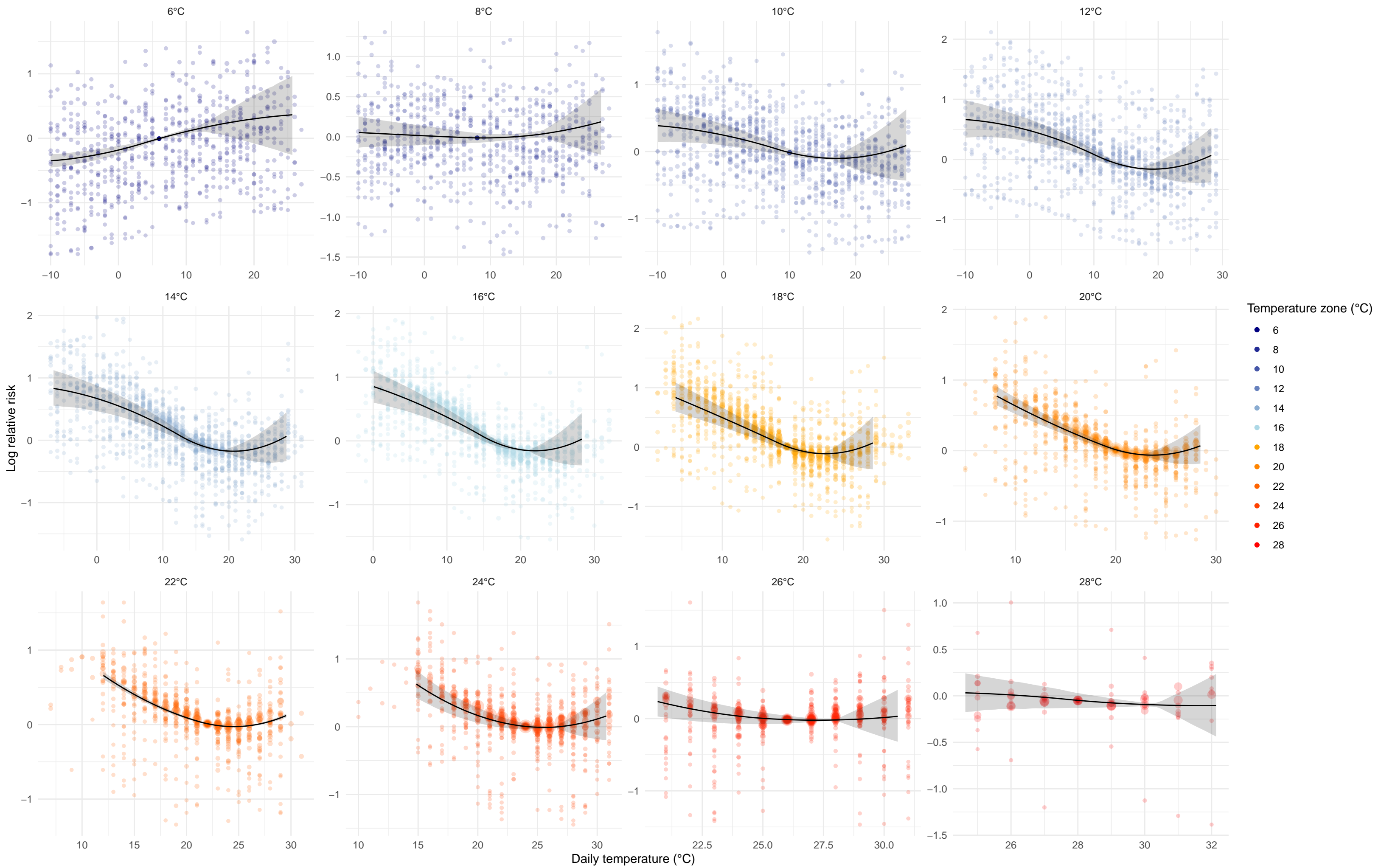
Cardiomyopathy and myocarditis



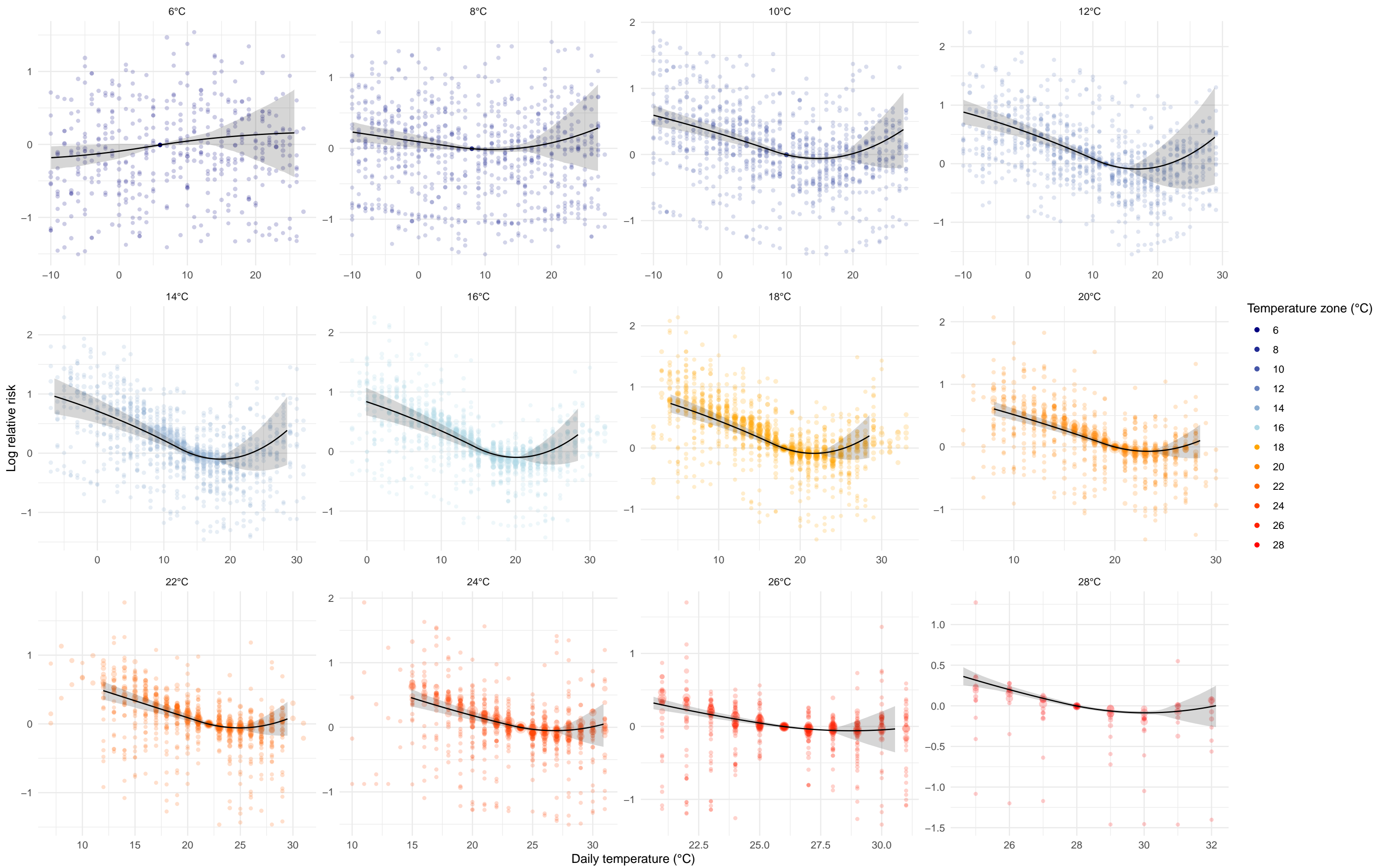
Chronic obstructive pulmonary disease



Diabetes mellitus

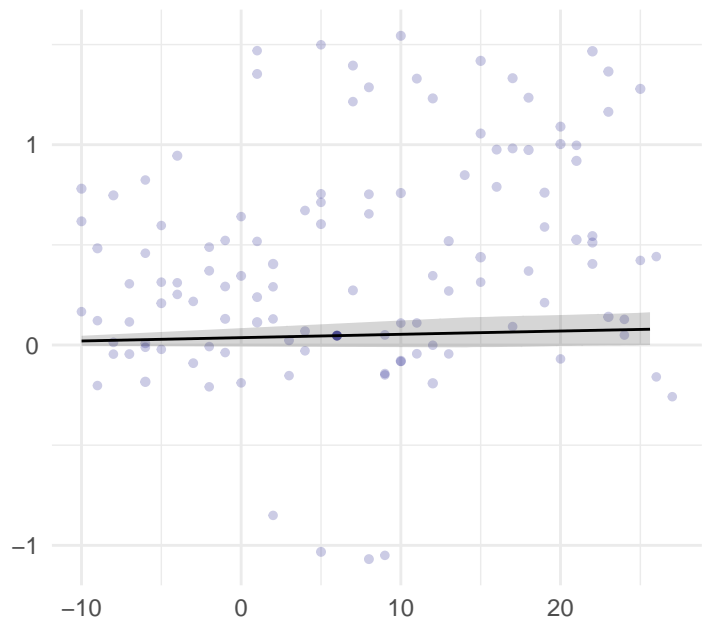


Chronic kidney disease

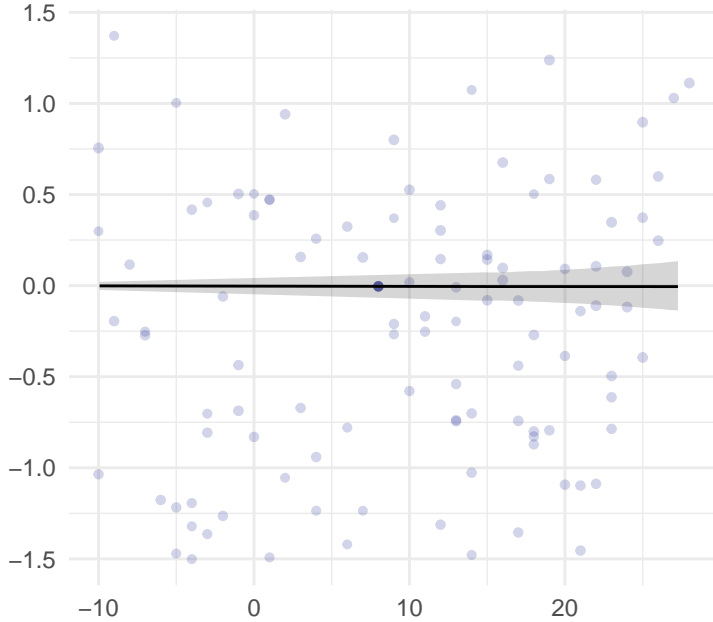


Drowning

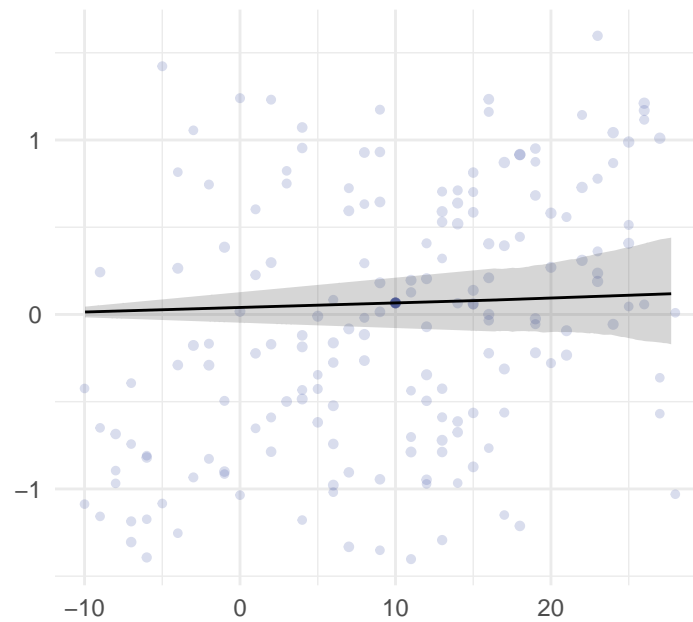
6°C



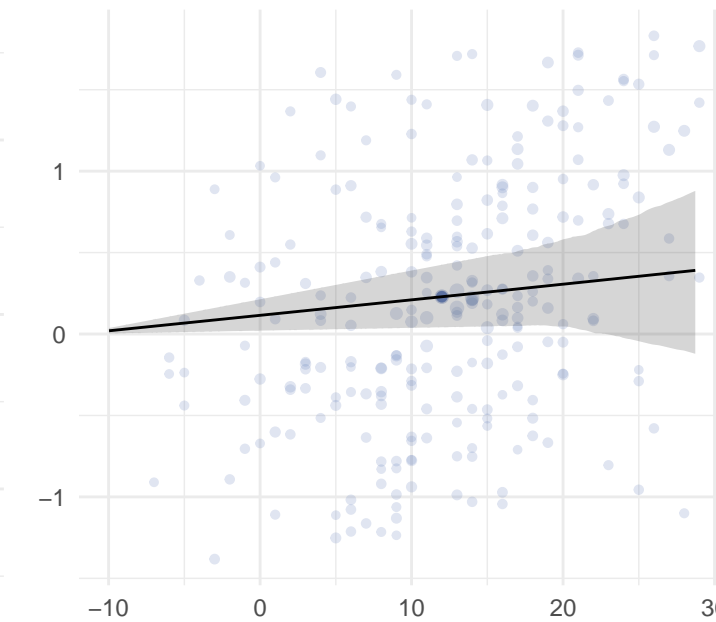
8°C



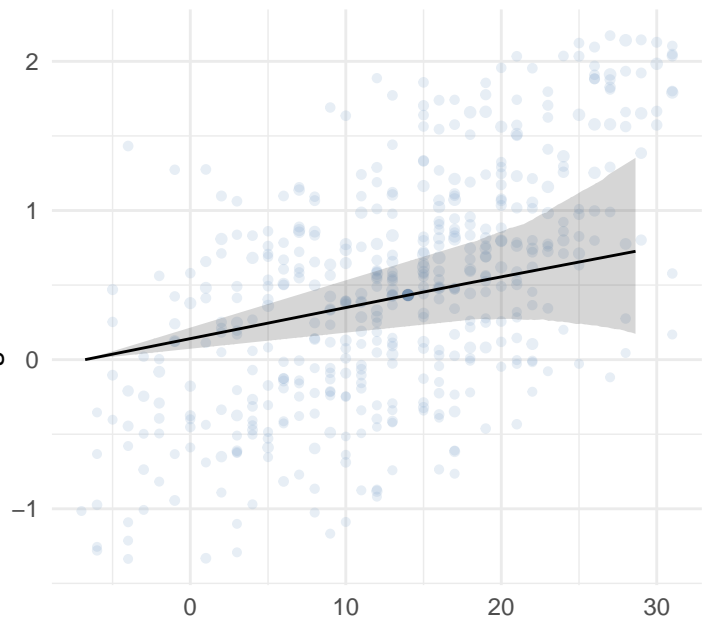
10°C



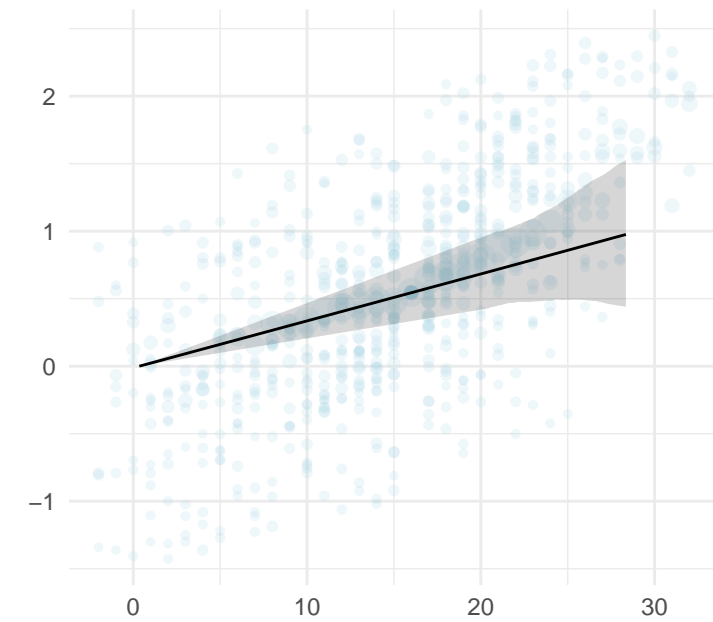
12°C



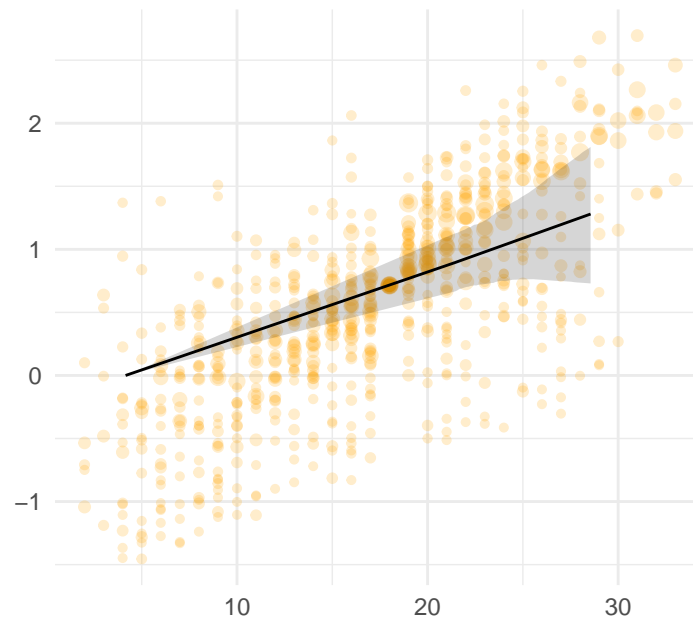
14°C



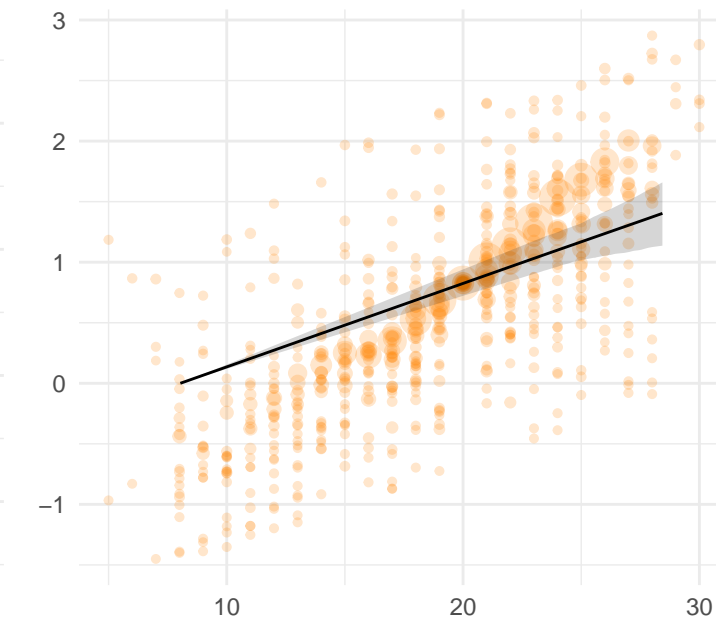
16°C



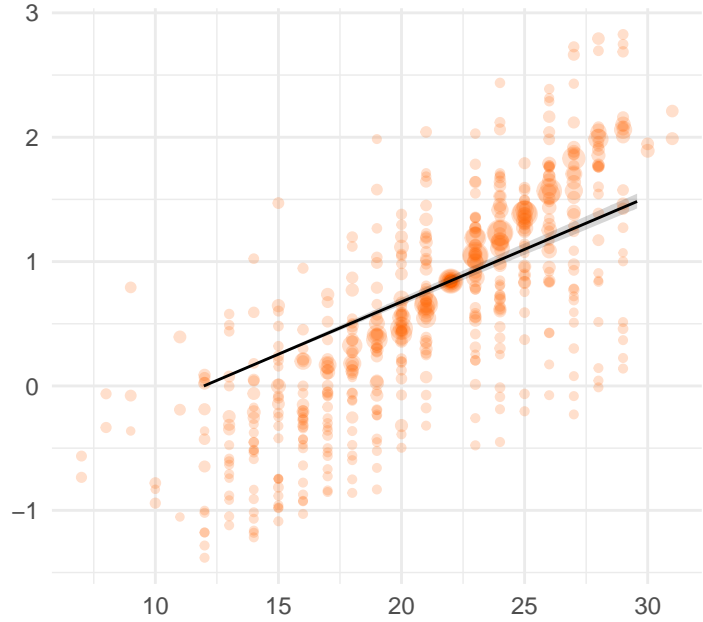
18°C



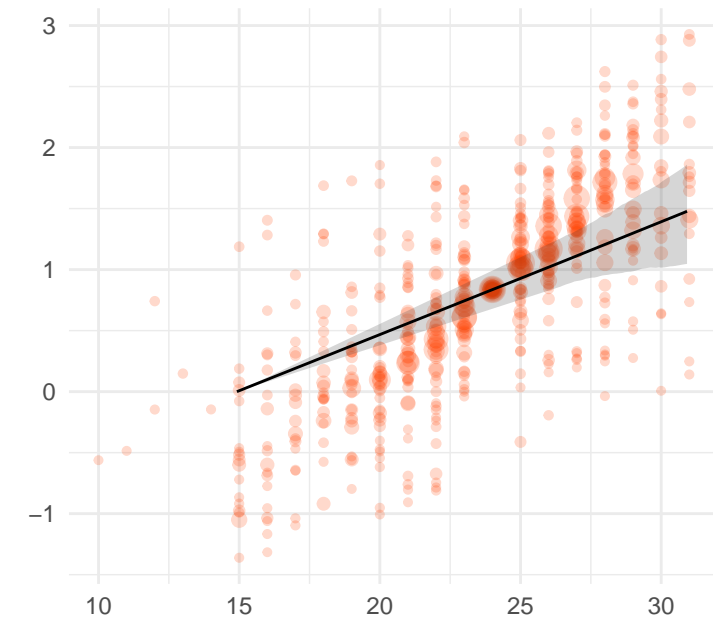
20°C



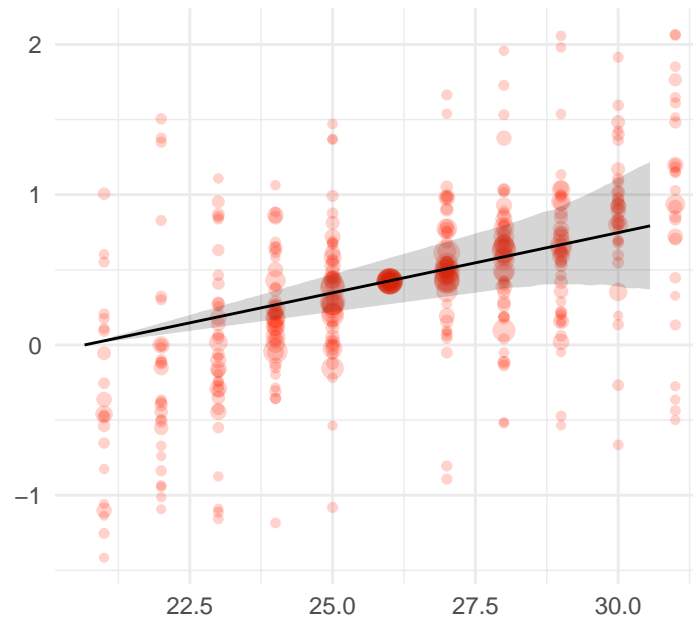
22°C



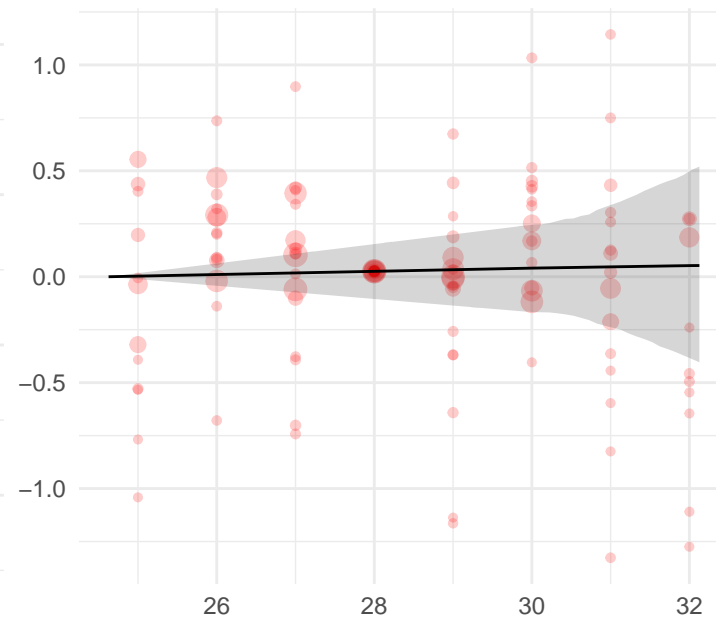
24°C



26°C



28°C



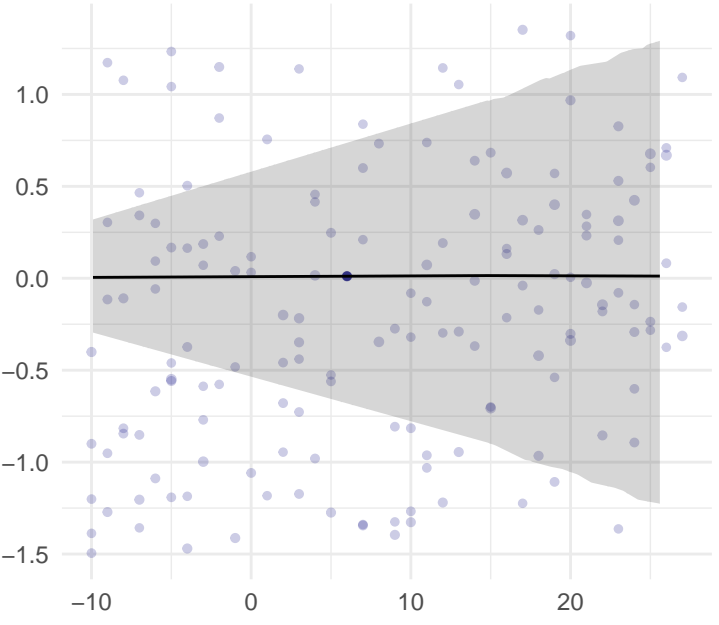
Temperature zone (°C)

- 6
- 8
- 10
- 12
- 14
- 16
- 18
- 20
- 22
- 24
- 26
- 28

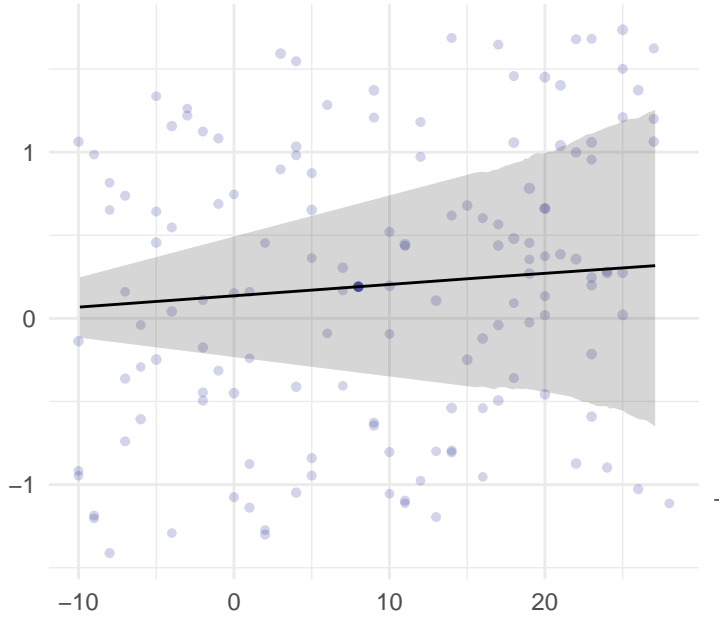
Daily temperature (°C)

Other unintentional injuries (internal)

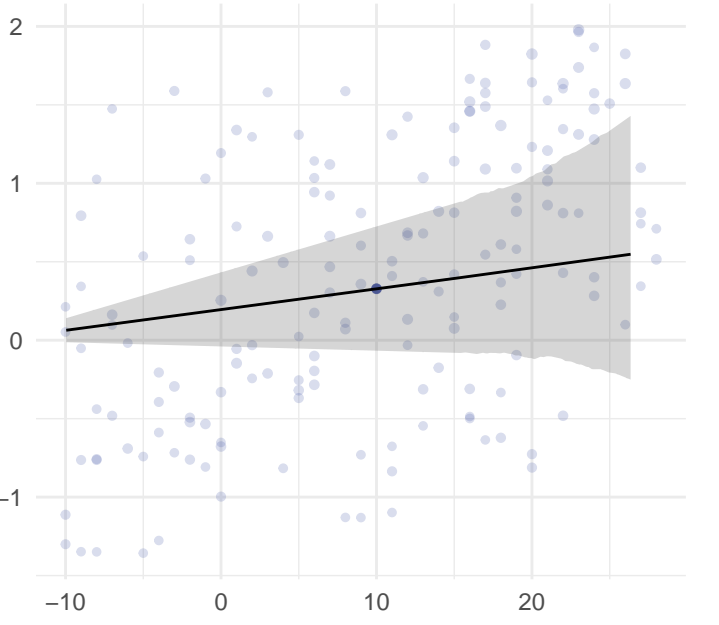
6°C



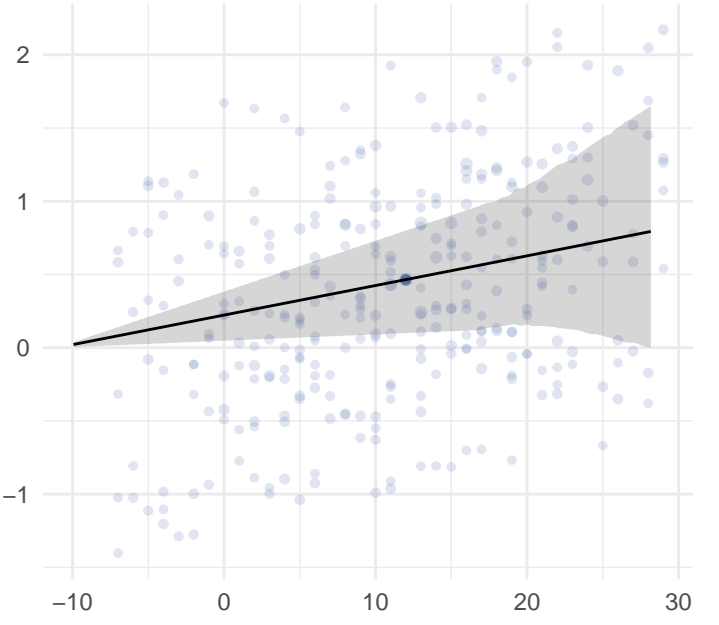
8°C



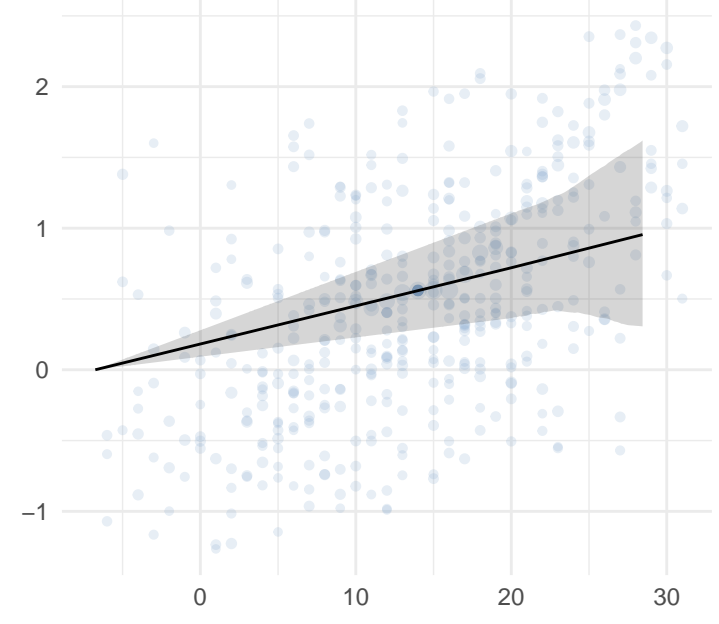
10°C



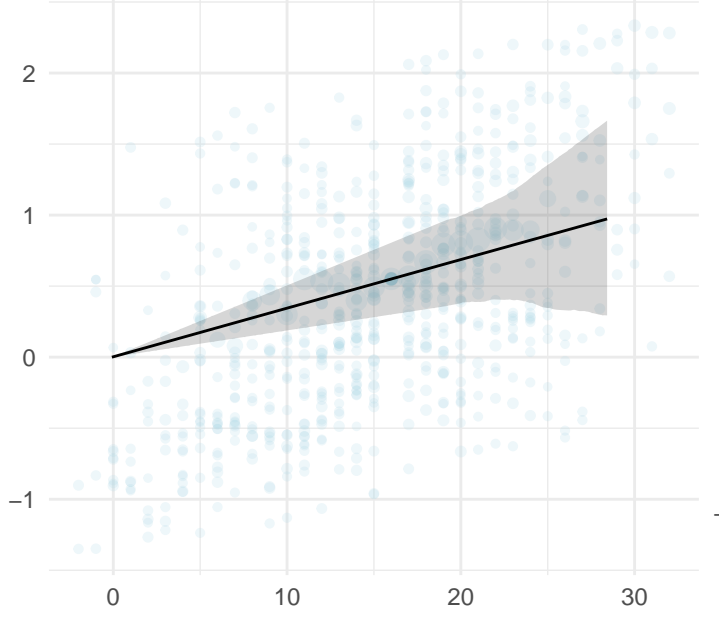
12°C



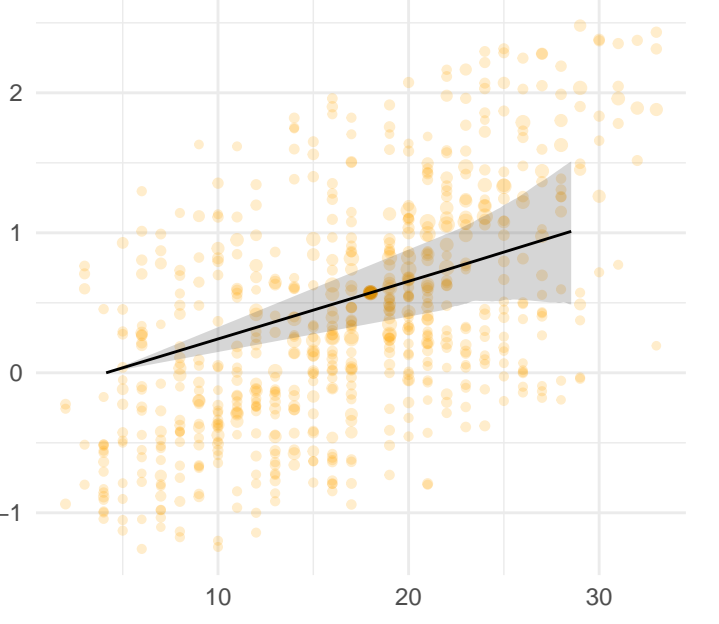
14°C



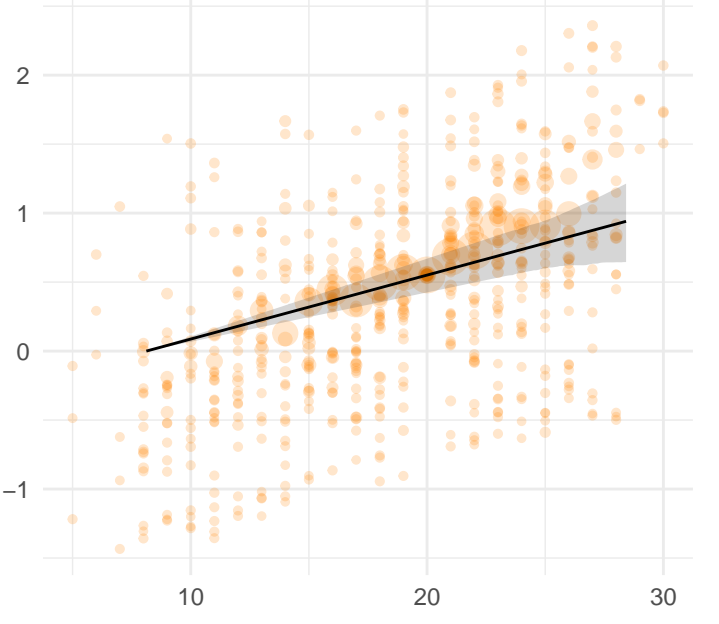
16°C



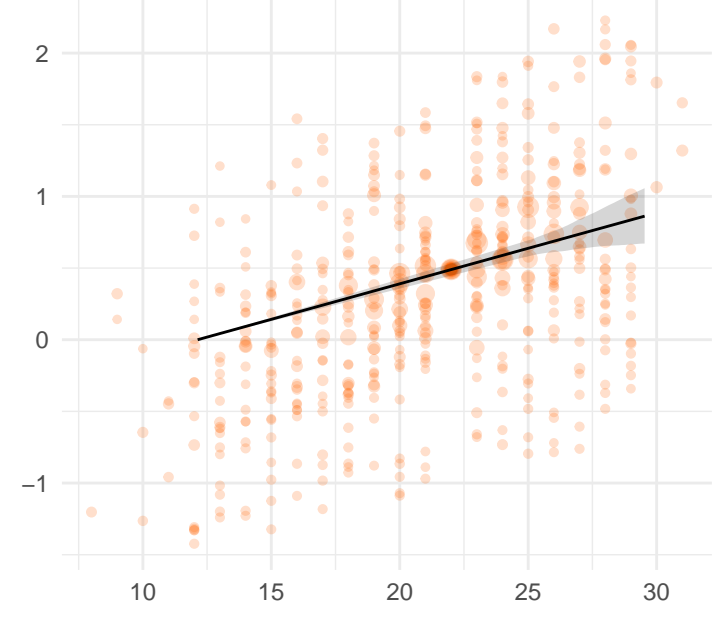
18°C



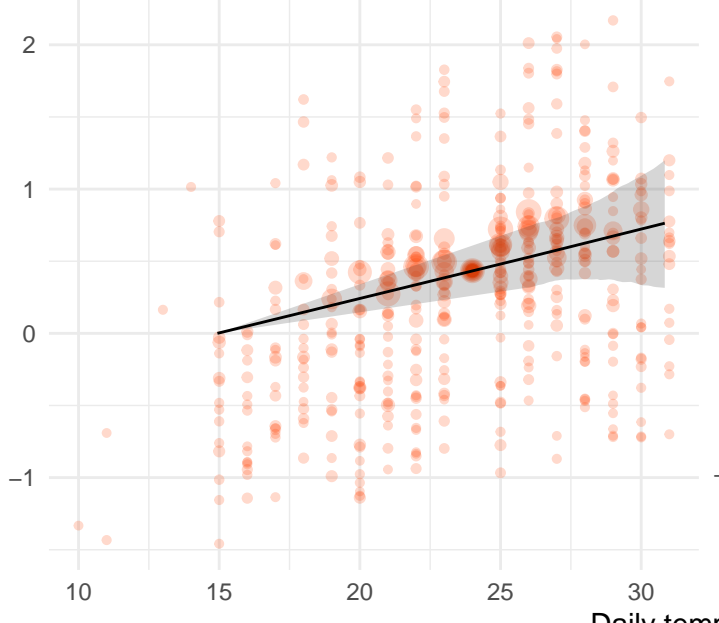
20°C



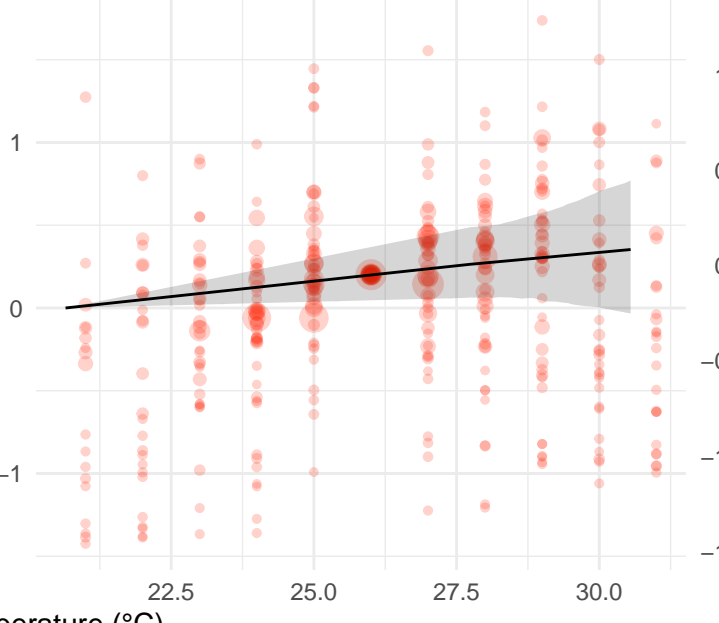
22°C



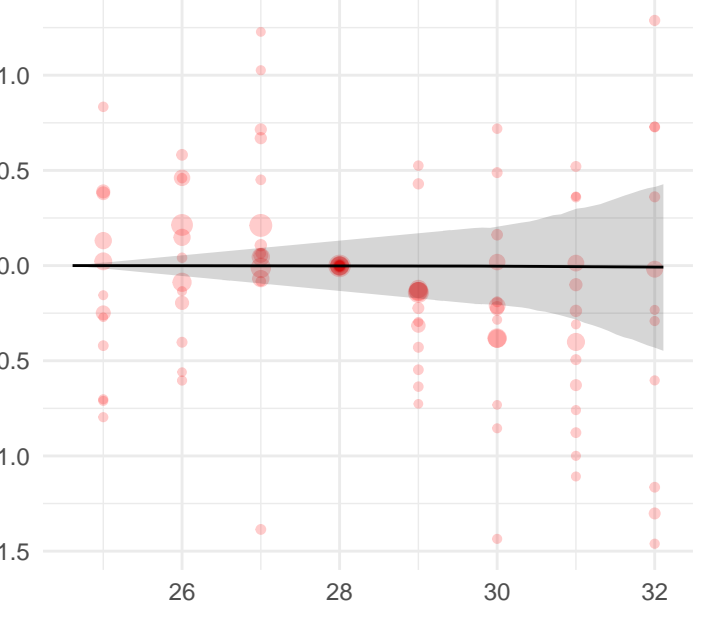
24°C



26°C



28°C



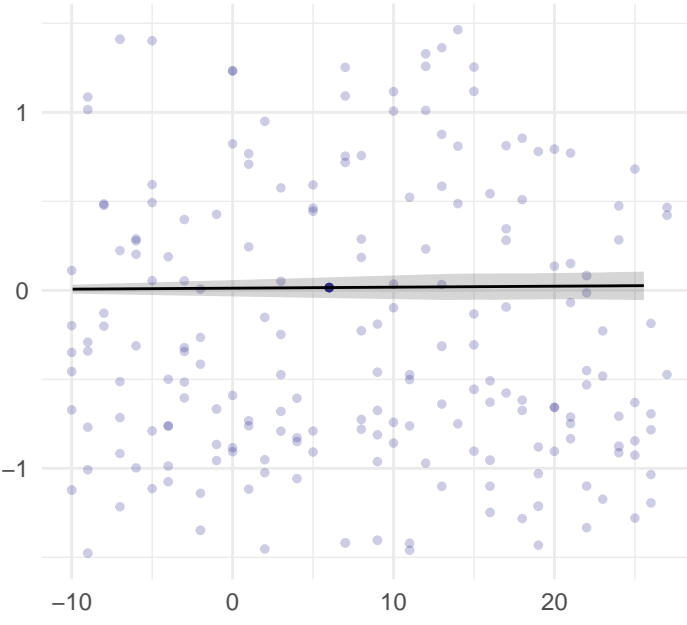
Temperature zone (°C)

- 6
- 8
- 10
- 12
- 14
- 16
- 18
- 20
- 22
- 24
- 26
- 28

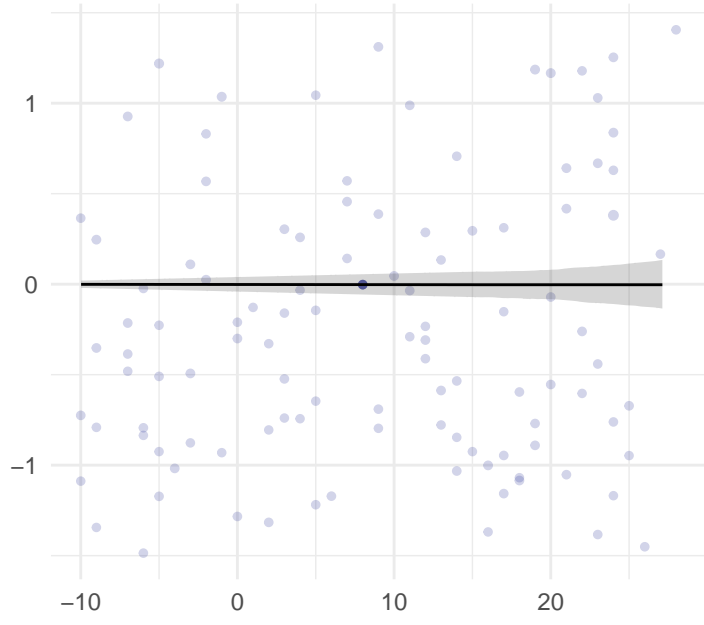
Daily temperature (°C)

Animal contact

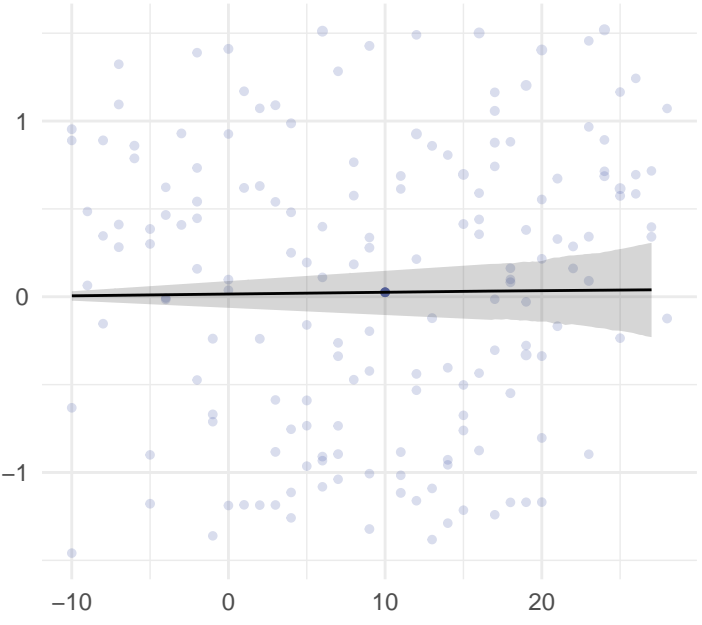
6°C



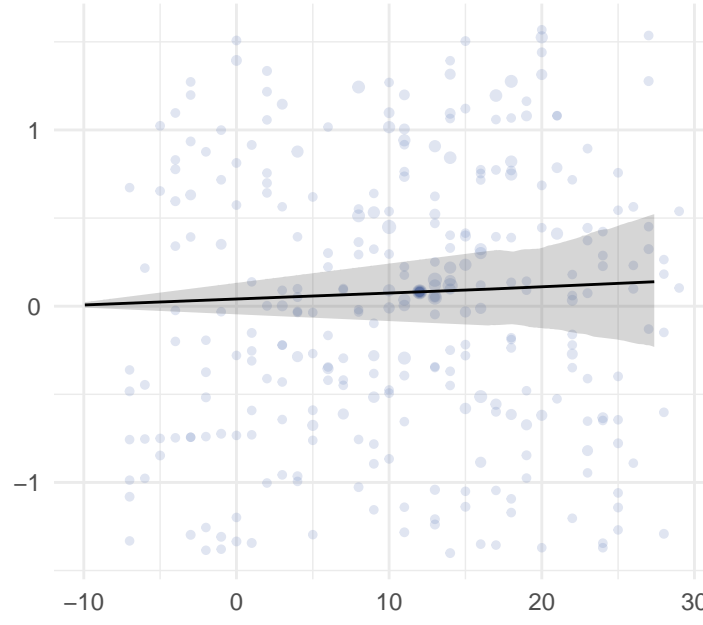
8°C



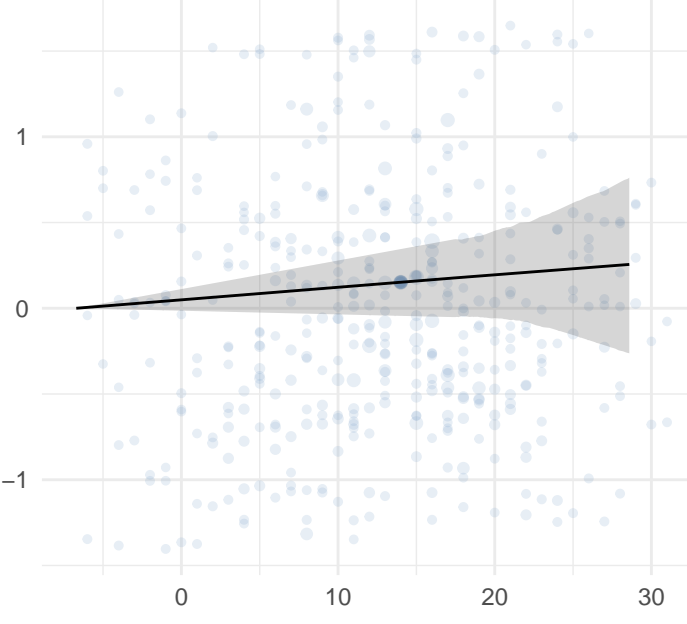
10°C



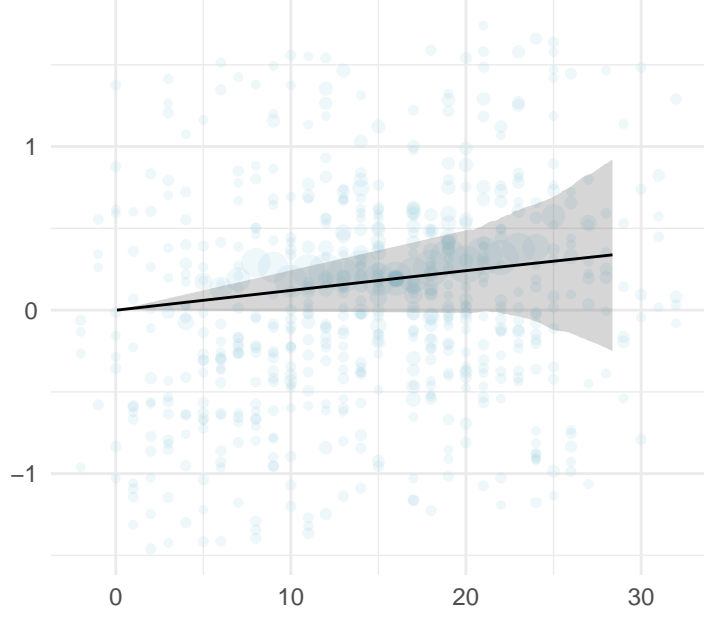
12°C



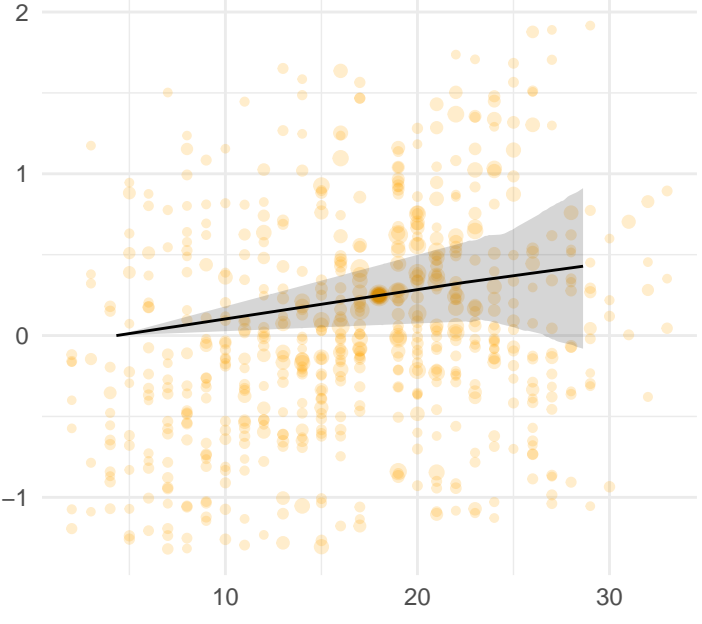
14°C



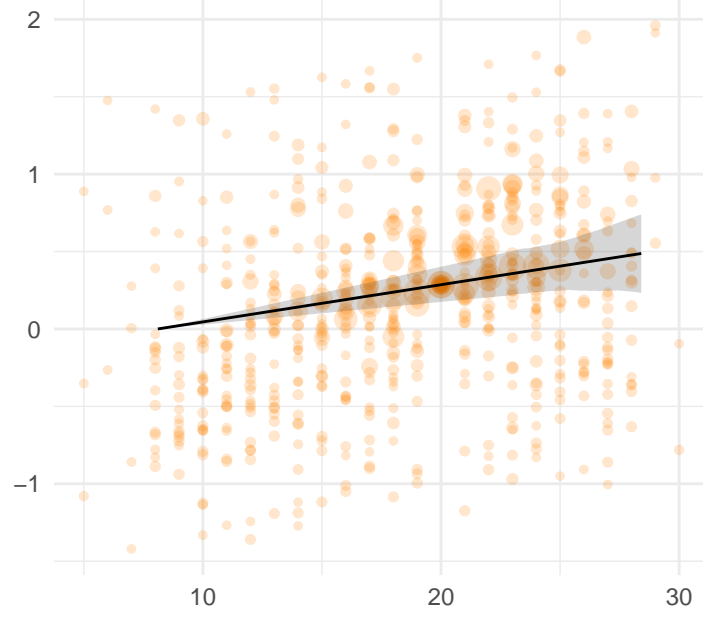
16°C



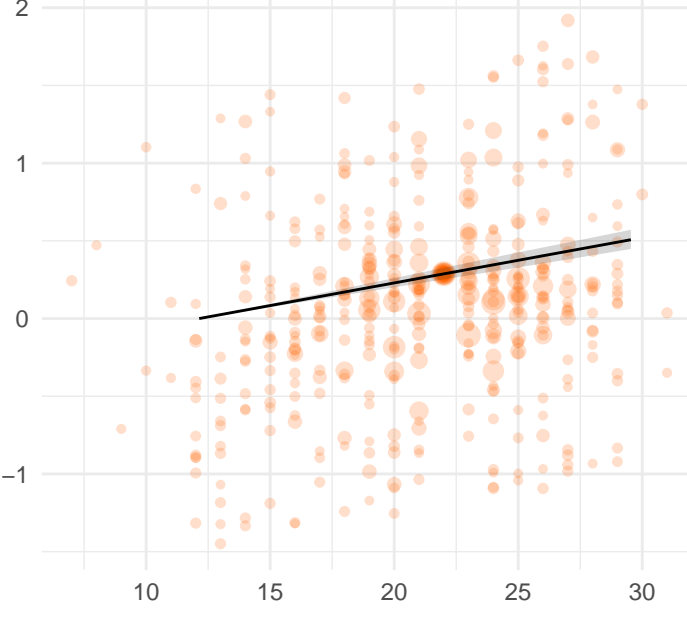
18°C



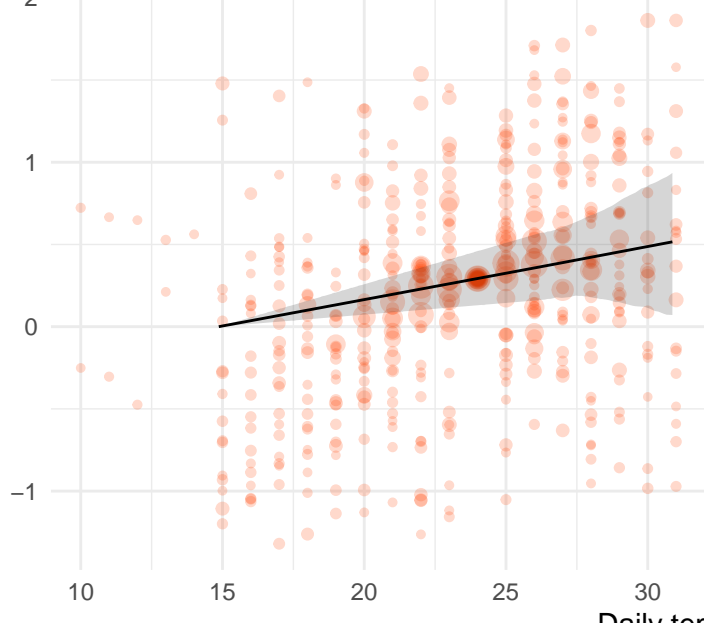
20°C



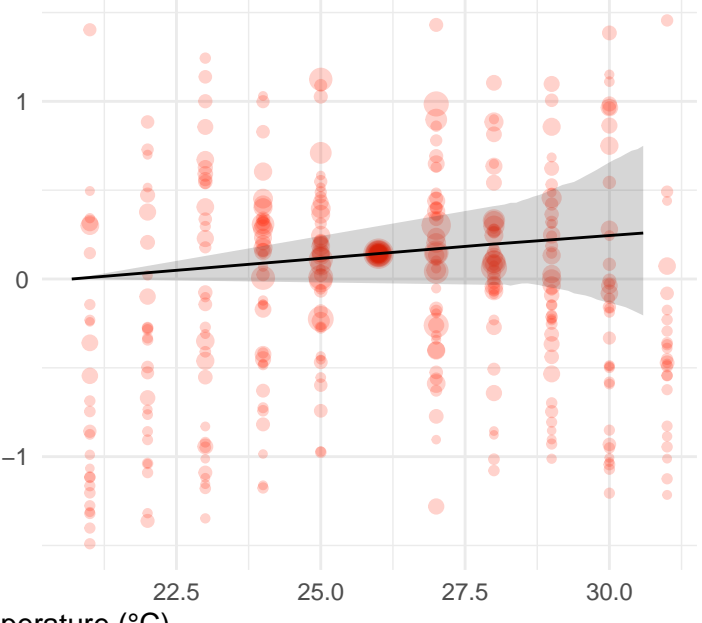
22°C



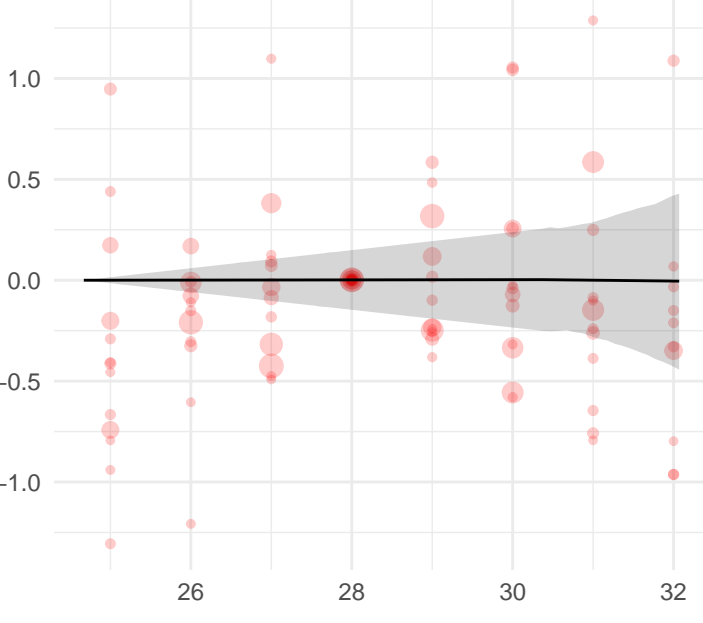
24°C



26°C



28°C

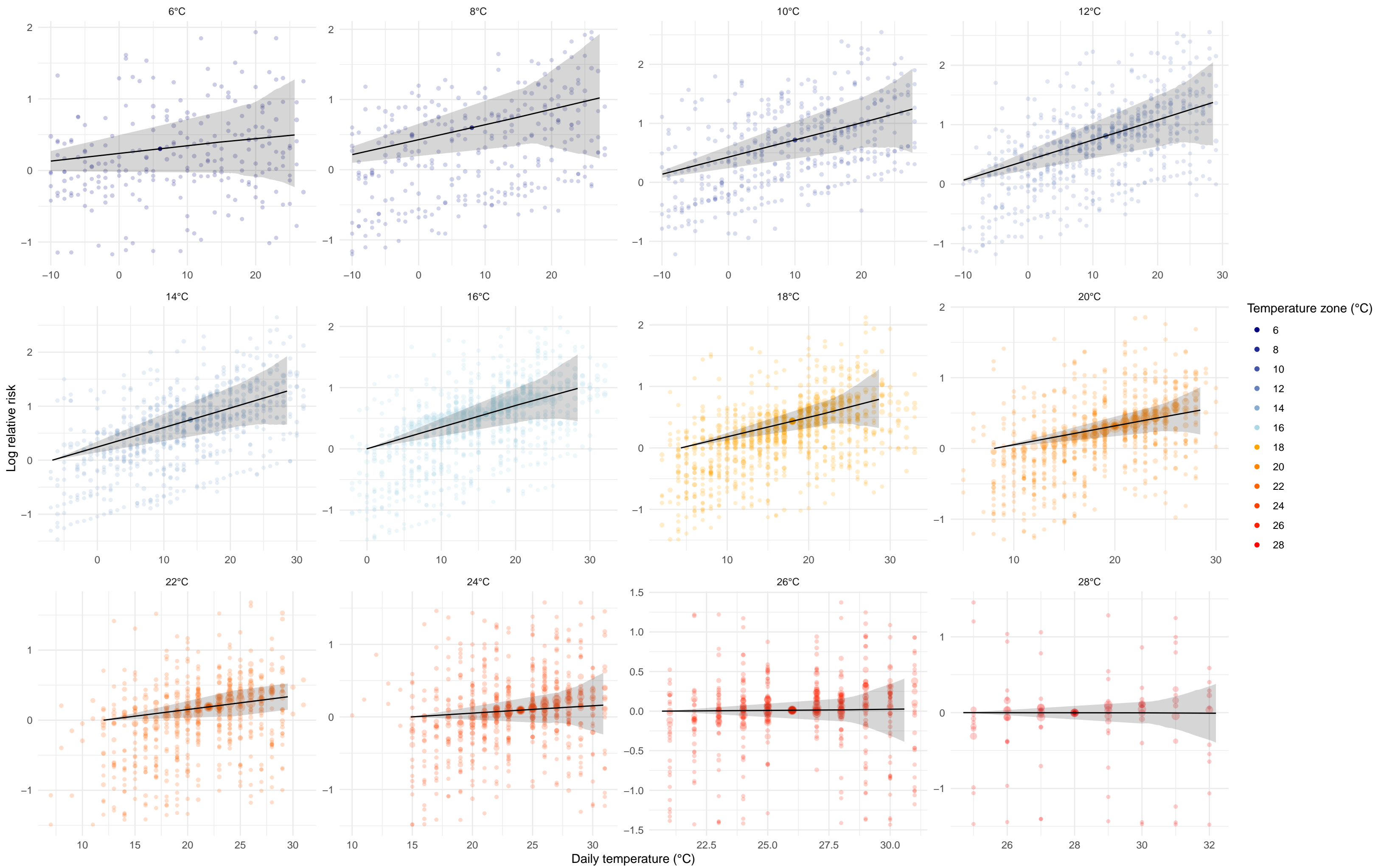


Temperature zone (°C)

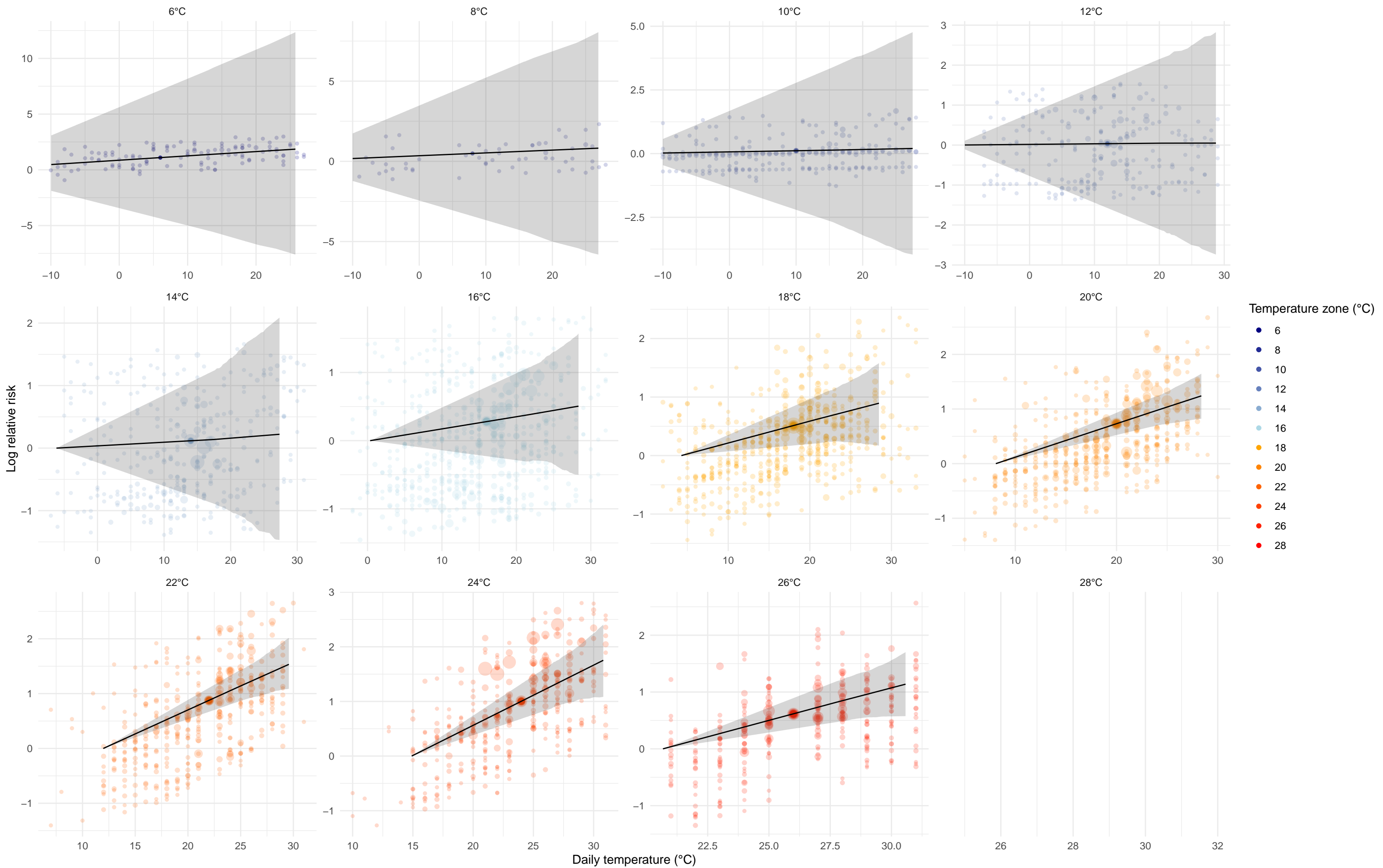
- 6
- 8
- 10
- 12
- 14
- 16
- 18
- 20
- 22
- 24
- 26
- 28

Daily temperature (°C)

Self-harm

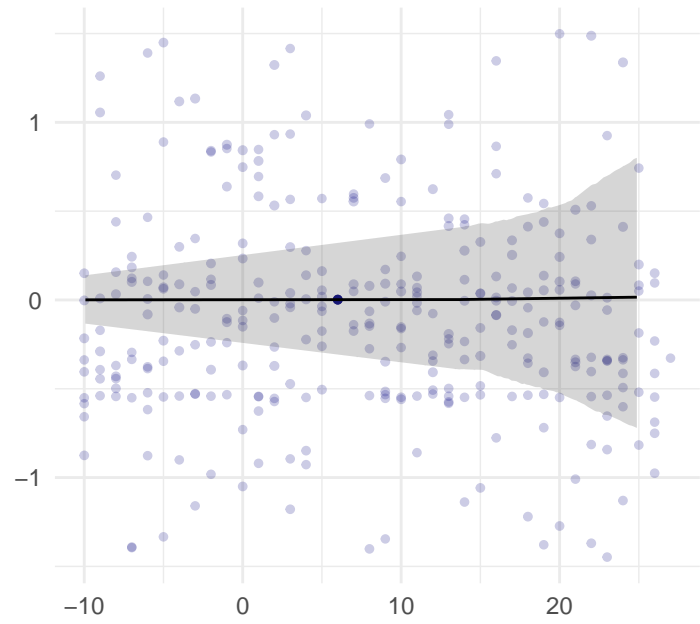


Exposure to forces of nature

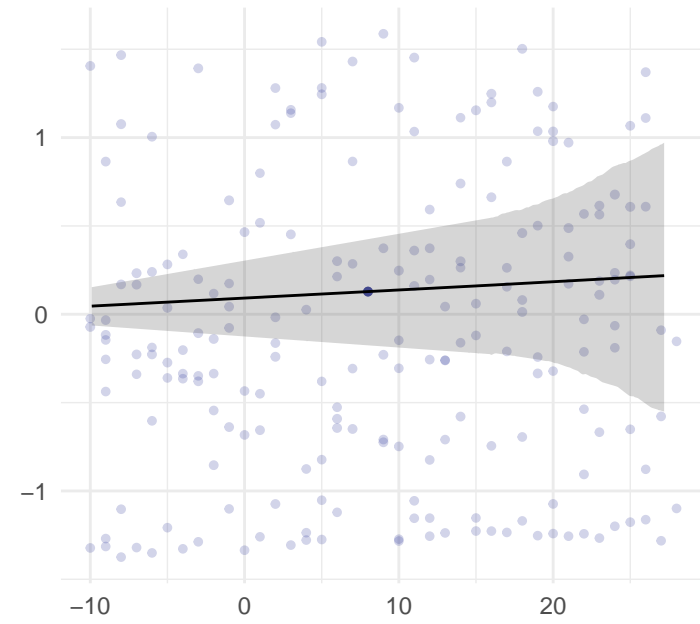


Interpersonal violence

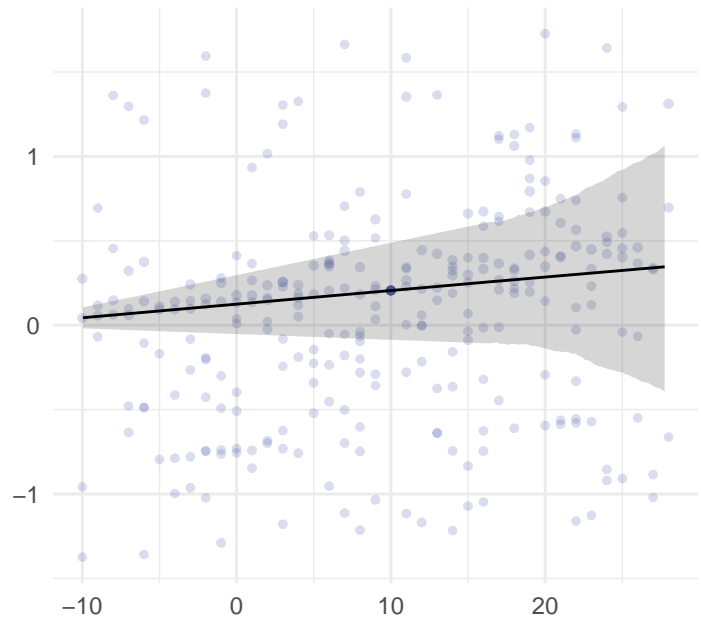
6°C



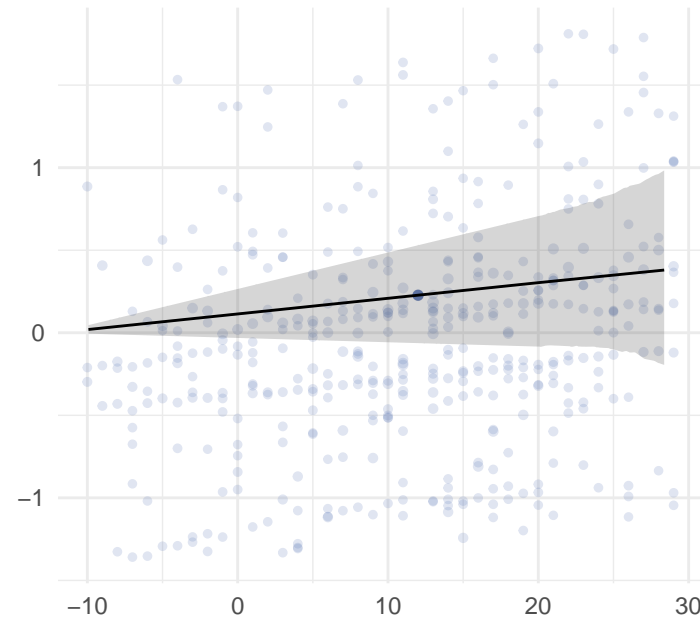
8°C



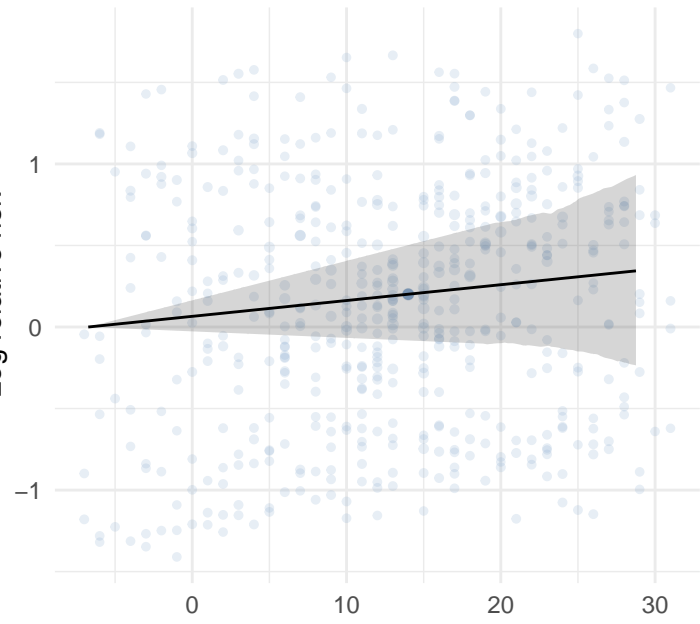
10°C



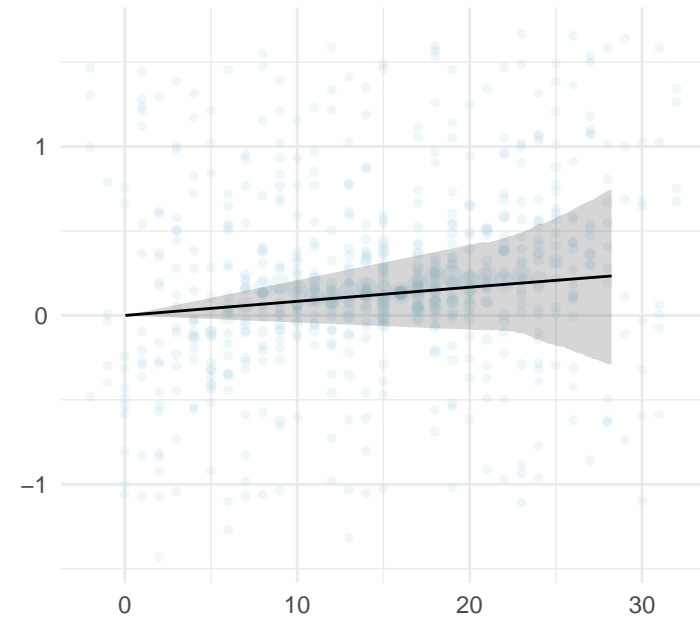
12°C



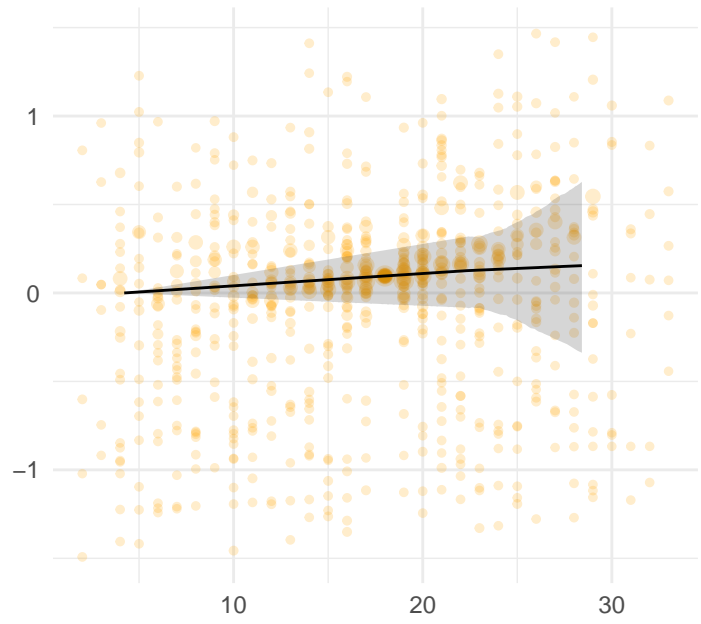
14°C



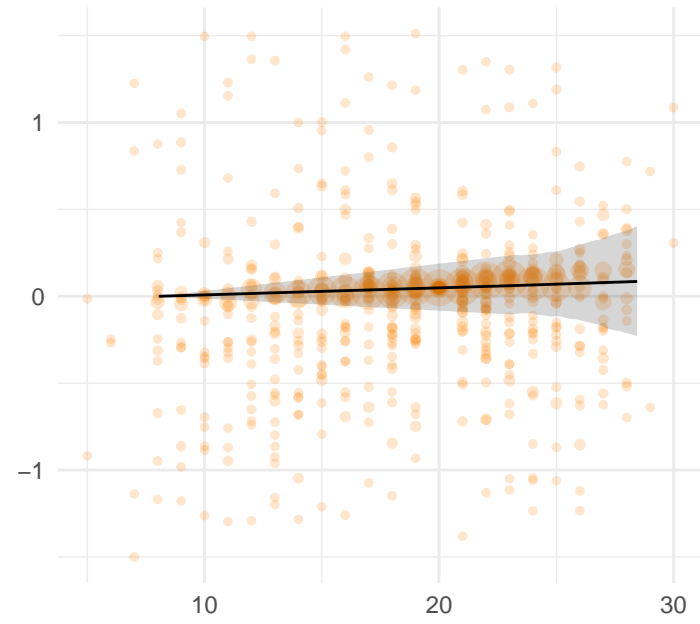
16°C



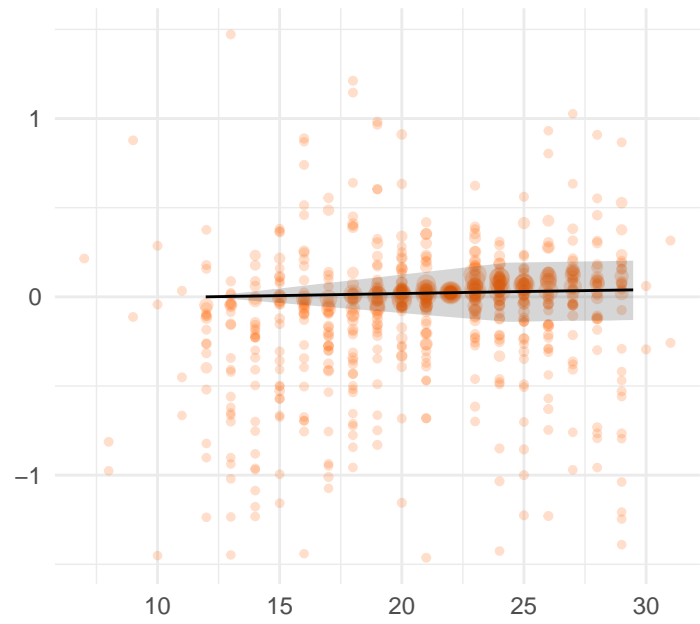
18°C



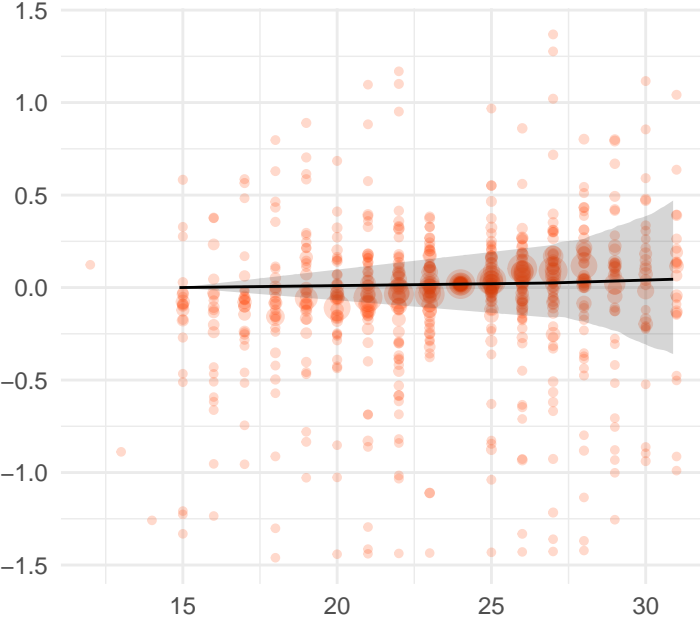
20°C



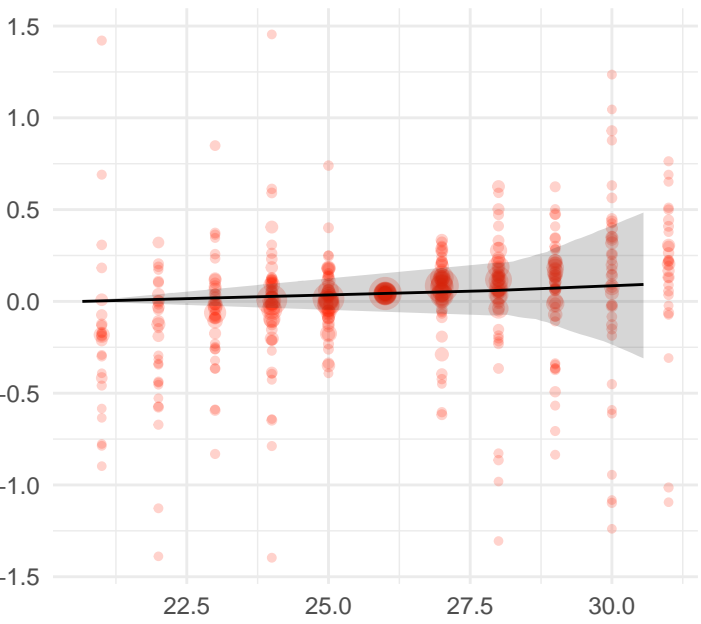
22°C



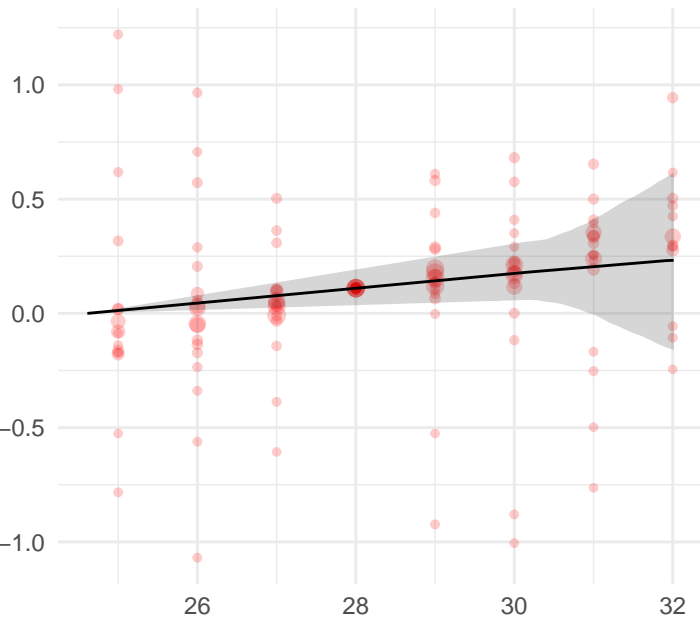
24°C



26°C



28°C

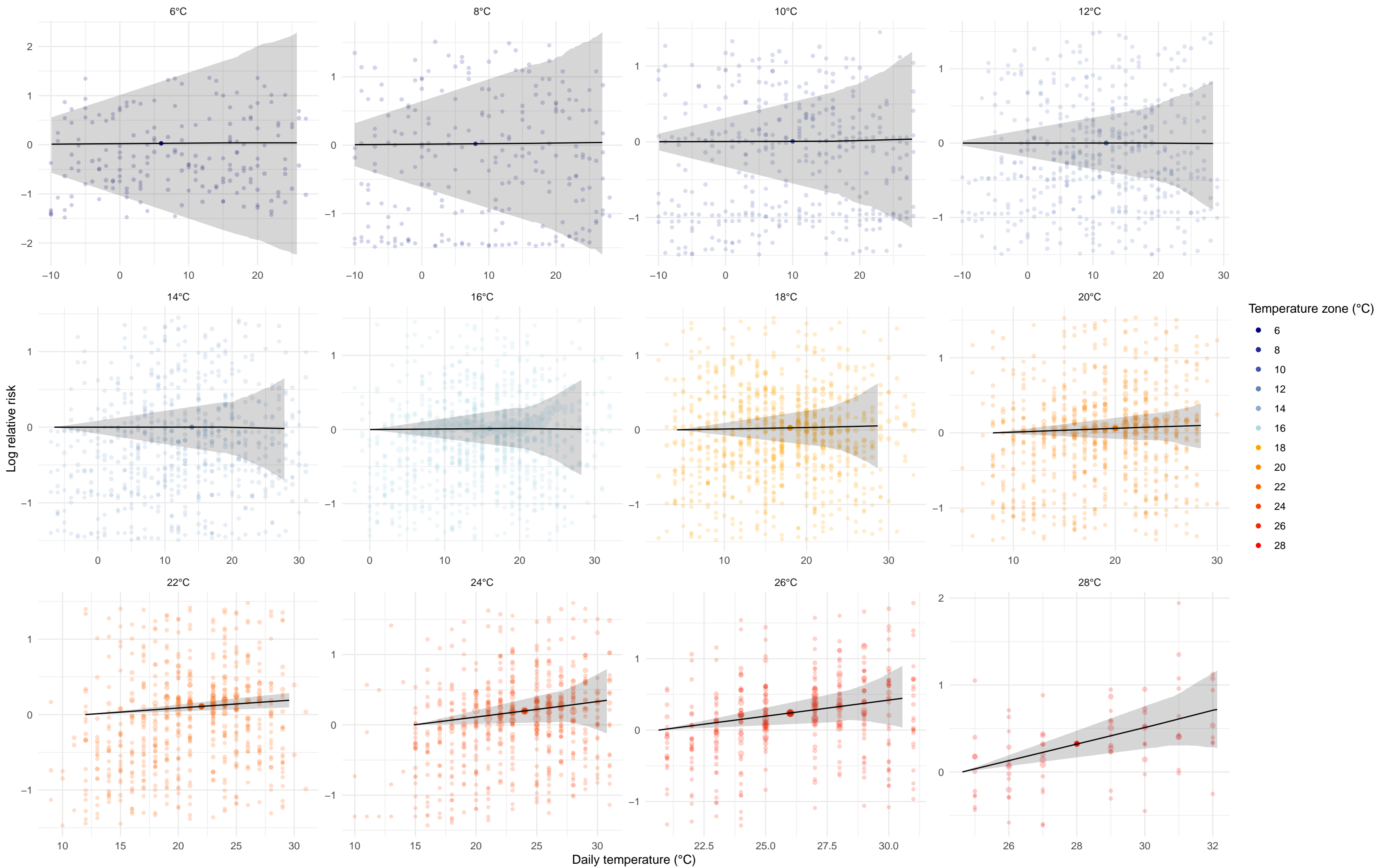


Temperature zone (°C)

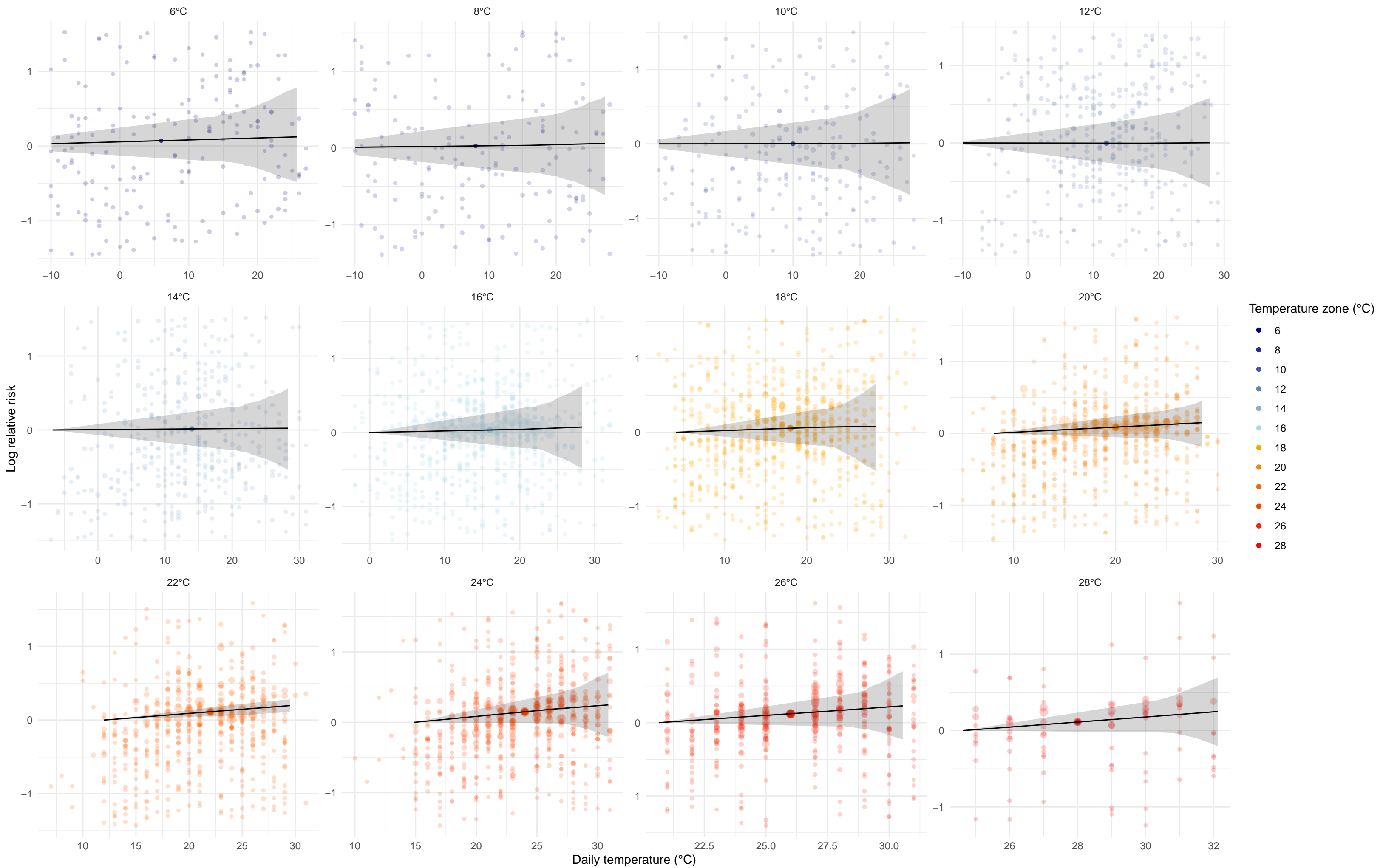
- 6
- 8
- 10
- 12
- 14
- 16
- 18
- 20
- 22
- 24
- 26
- 28

Daily temperature (°C)

Exposure to mechanical forces



Other transport injuries



Road injuries

