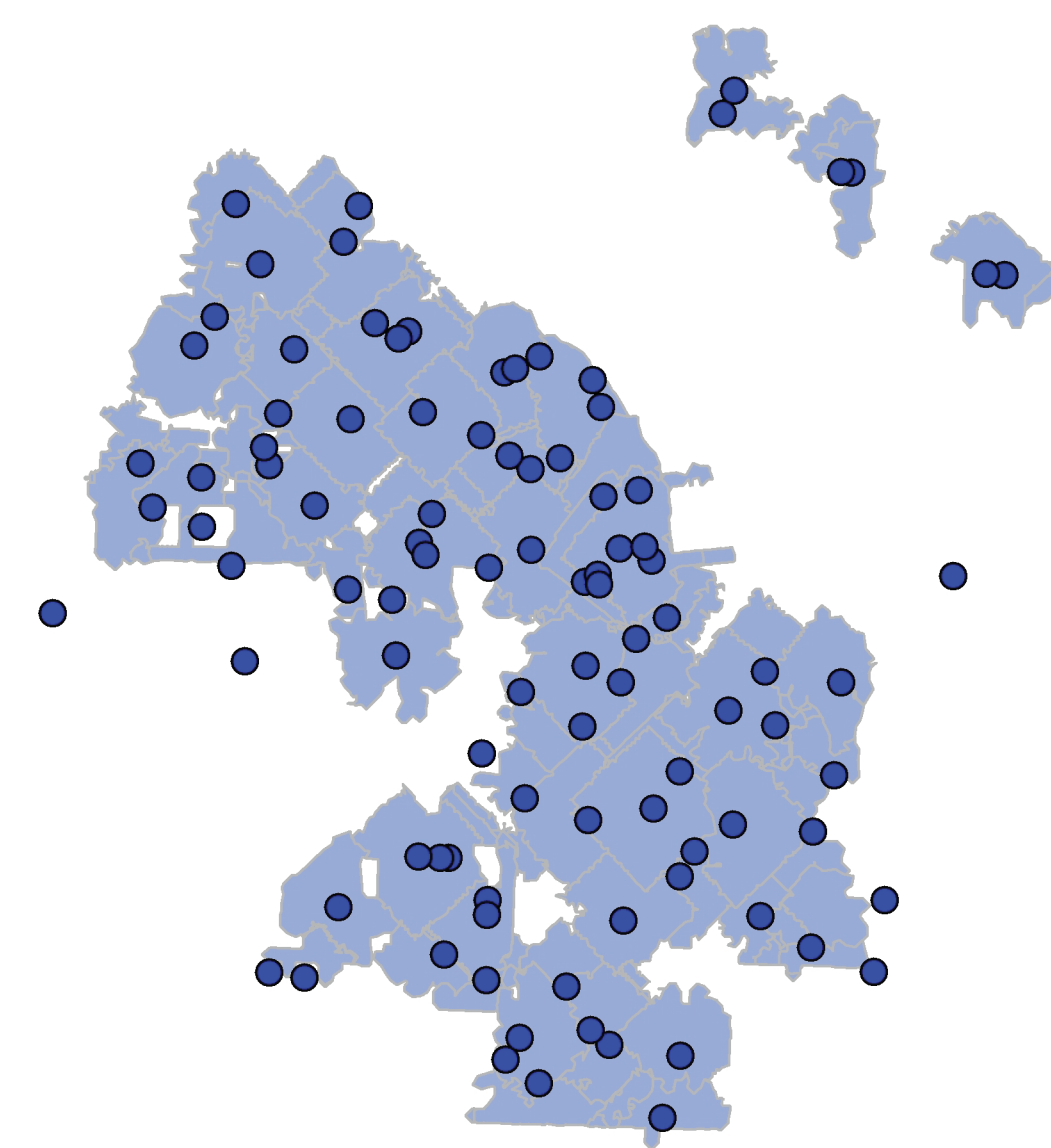


Tacoma Zoning for a Retail Location

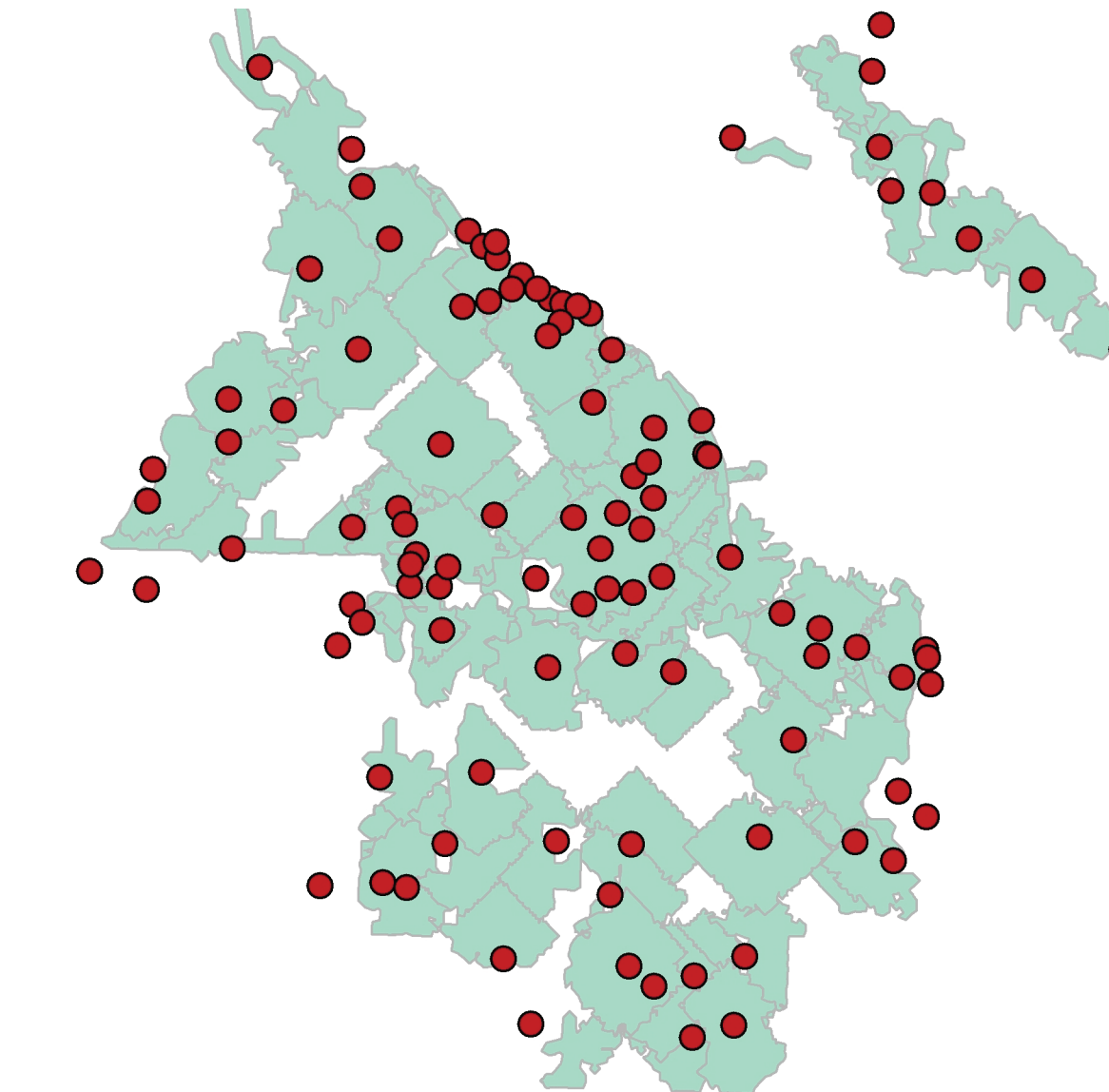


Network Analyst - Tacoma schools - 15 minute walk time

Thesis

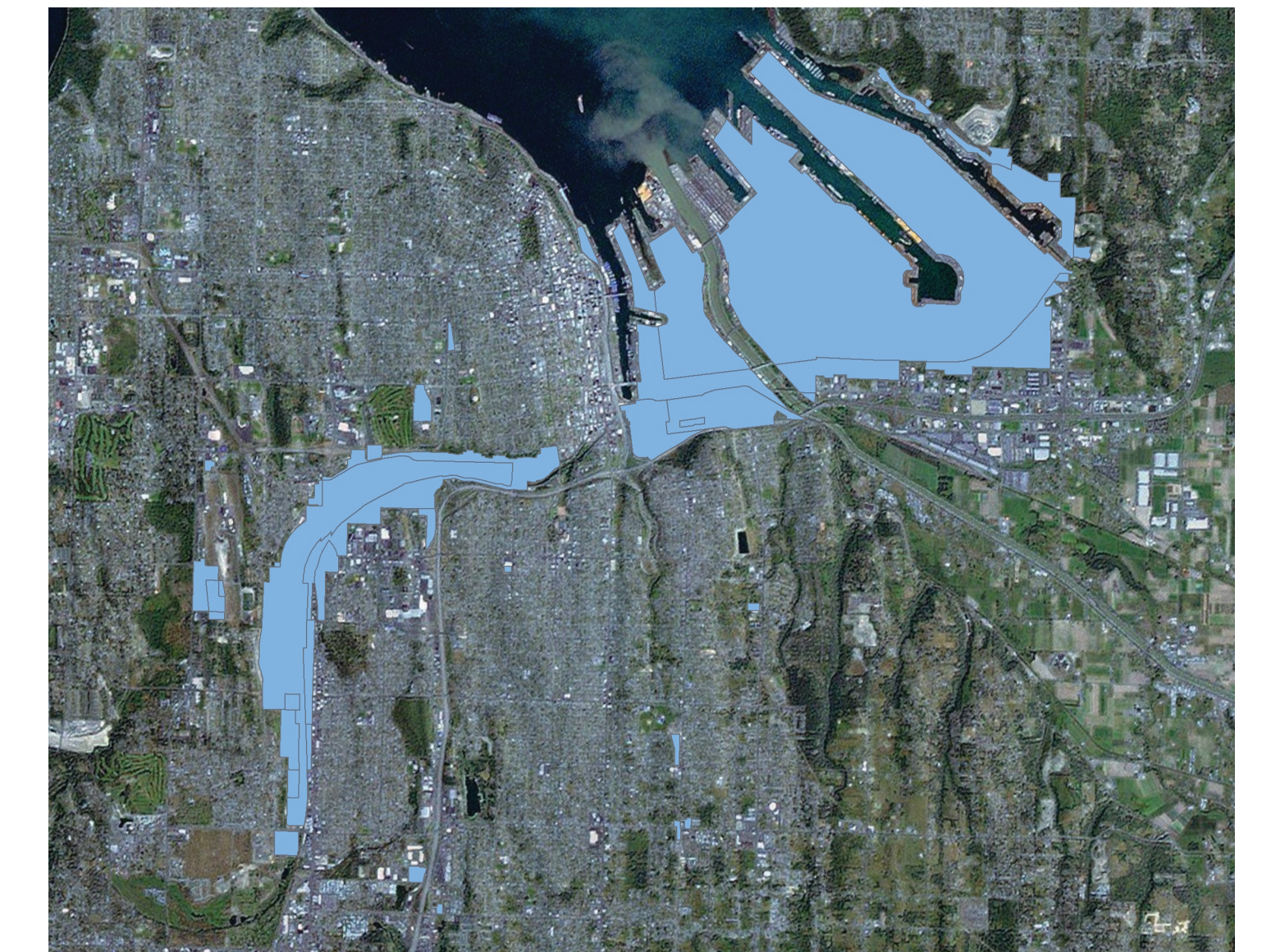
Geographic Information Systems (GIS) are powerful computer-based tools for integrating and analyzing spatial data from multiple sources. GIS permits geographically referenced information to be stored, edited, manipulated, and analyzed to generate interpretive maps and related statistics relevant for decision making. Applications in real estate spatial analysis are gradually taking off with the introduction of personal computer-based GIS software (Barnett & Okoruwa, 1993). This is a presentation of ESRI's ArcGIS as a tool to search for a retail storefront and an agricultural location for the purpose to grow and sell products in a Metropolitan area. Some ideas for the project include an espresso store and coffee roasting location, a winery and vineyard, or a vegetable stand and farming location.

What is a topic more interesting? How about something more controversial? How about Marijuana? Legalization might, or might



Network Analyst - Tacoma parks - 15 minute walk time

Tacoma Zoning for an Agricultural Warehouse



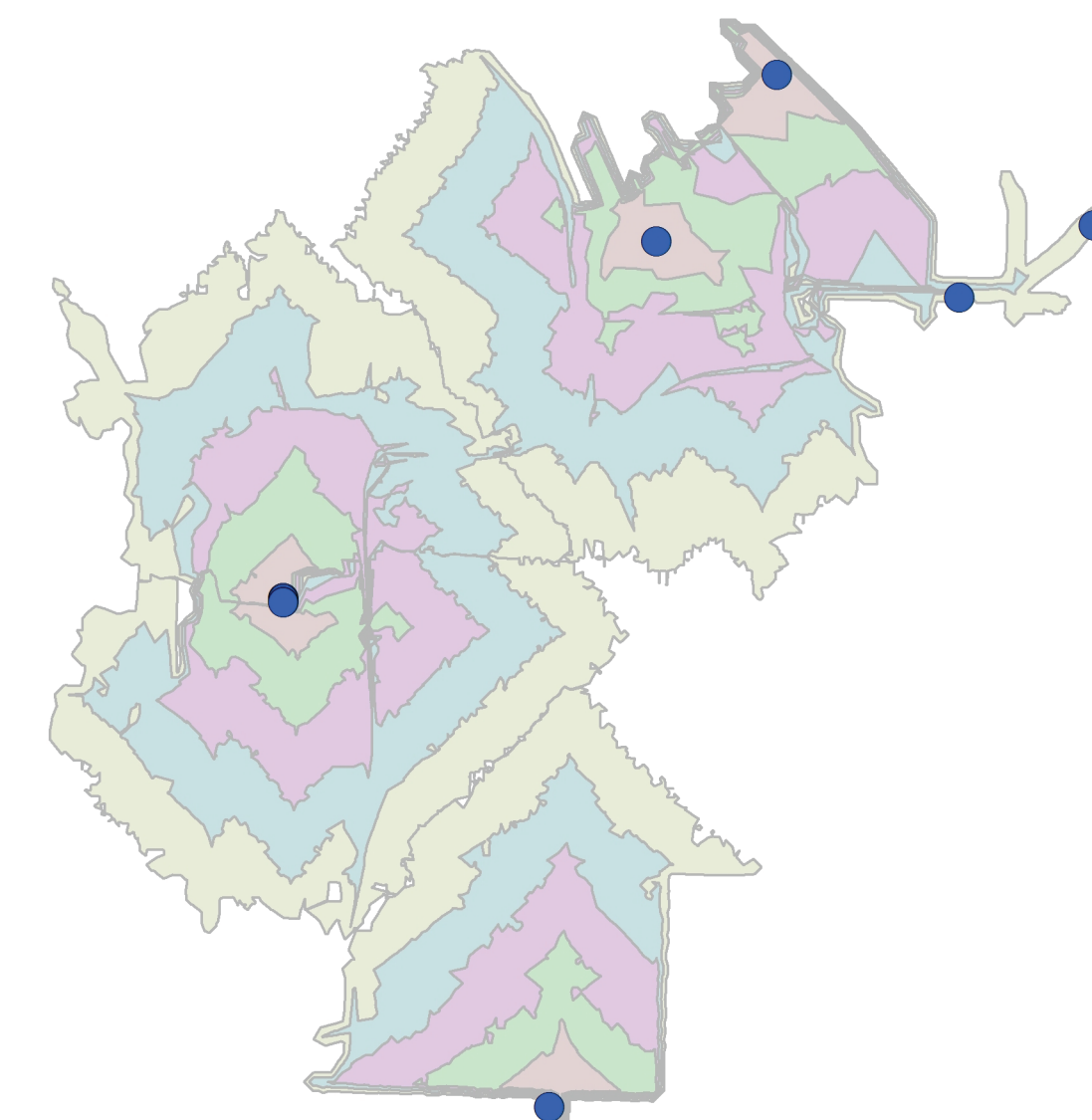
Final Parcel Locations - Aerial Layer

Historical Background

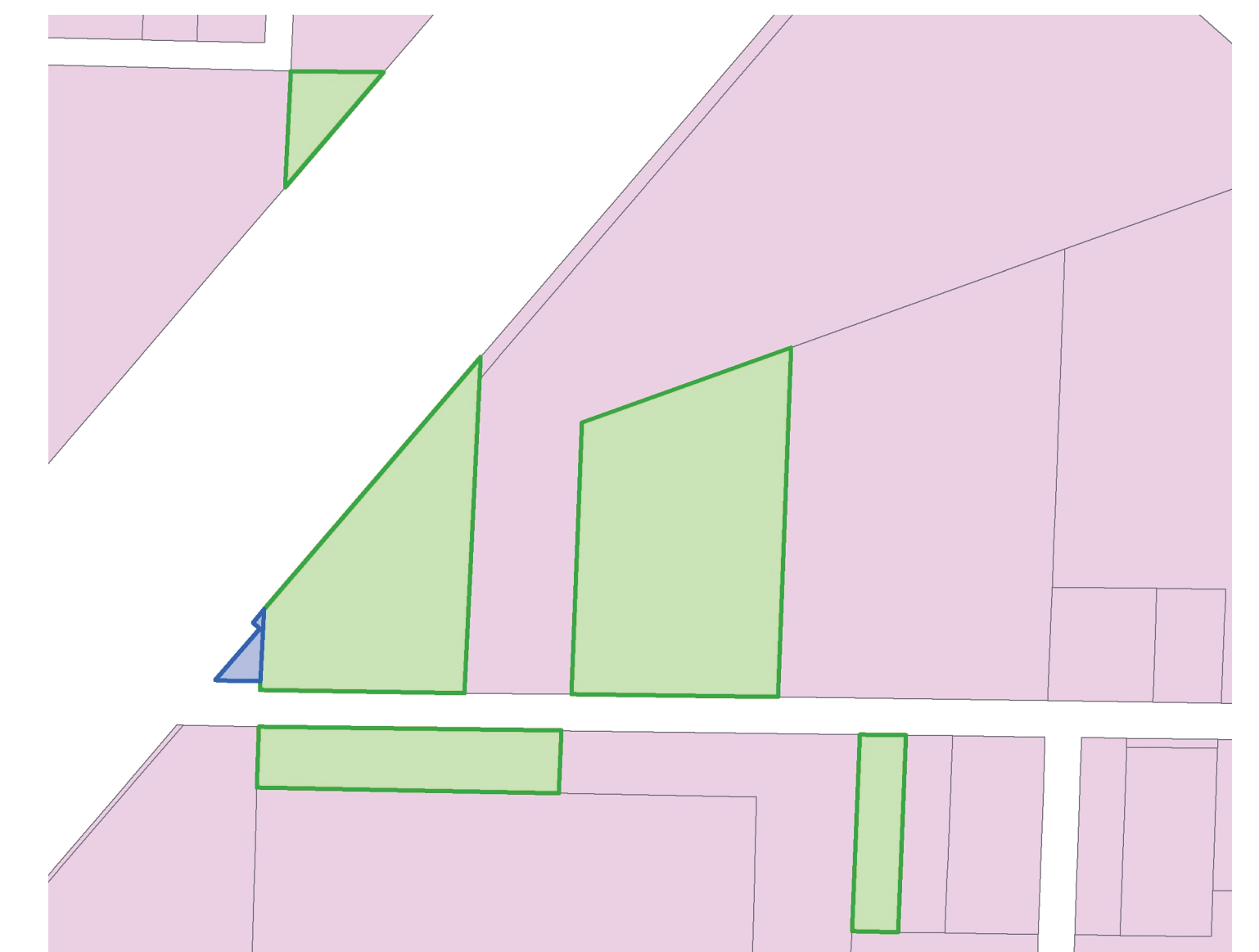
Cannabis cultivation for fiber and seed predates written history. Many theories surround its early psychedelic uses, including the role psychoactive plants may have played in the evolution of consciousness by introducing to us some concept of a spiritual dimension and perhaps the notion of religion (Thomas, 2006). In the early days of the United States of America, in 1619, America's first hemp law was enacted at Jamestown colony "ordering" all farmers to grow *Indian hemp* seed. Similarly, mandatory hemp cultivation laws were enacted in Massachusetts, Connecticut, and in the Chesapeake colonies into the mid-1700's (Global Hemp, 2010). The word "marijuana" was adopted by Americans in the 1900s when they were introduced to new drug varieties by migrating Mexican laborers in the South West. The El Paso city council calculated that marijuana prohibition would be a convenient way of controlling the unpopular Mexicans. In

Conclusion

Final concerns and feasibility issues could be looked at within a business plan. This project is in a form to represent a realistic use to the ESRI's ArcGIS software and the Network Analyst extension. Options could be modified for additional or lessened detail with further development. In retrospect, Analyst did create a simple way to dissect the parcel search. If the project was reworked, I might choose a project topic that is more comfortable to talk about in public: winery and an indoor vineyard. An additional change includes running GIS around raster calculations. The analysis could be based around wages and demography density. In any case, this process created a reasonable outcome. The final parcel cluster could house this new type of business, as a separate warehouse and storefront, an integrated store and garden, or the original idea of a business ran by the State of Washington.



Retail Sales Location - Network Analyst



Final Parcel Locations - Land Use Layer

Created by Jason Gould
University of Washington
Certificate Program, Geographic Information Systems
Contact: XJCasper@u.washington.edu
Projected Coordinate System:
NAD_1983_HARN_StatePlane_Washington_South_FIPS_4602_Feet

Reference Materials

Alexandris, G., M. Dimopoulou, et al. (2008). A Three-phase Methodology for Developing or Evaluating Bank Networks. *International Transactions in Operational Research*. 15(2): 215-237.

Bansal, V. K. & Pal, M. (2009). Construction Schedule Review in GIS with a Navigable 3D Animation of Project Activities. *International Journal of Project Management*. 27(5): 532-542.

Barnett, A. P., & Okoruwa, A. A. (1993). Application of Geographic Information Systems in Site Selection and Location Analysis. *Appraisal Journal*. v61(n2): p245(249).

Bhattacharyya, S. P. D. Morrison, et al. (2010). Opposite Effects of Delta-9-Tetrahydrocannabinol and Cannabidiol on Human Brain Function and Psychopathology. *Neuropsychopharmacology*. 35(3): 764-774.

Butkiewicz, T., R. Chang, et al. (2008). Visual Analysis and Semantic Exploration of Urban LIDAR Change Detection. *Computer Graphics Forum*. 27(3): 903-910.

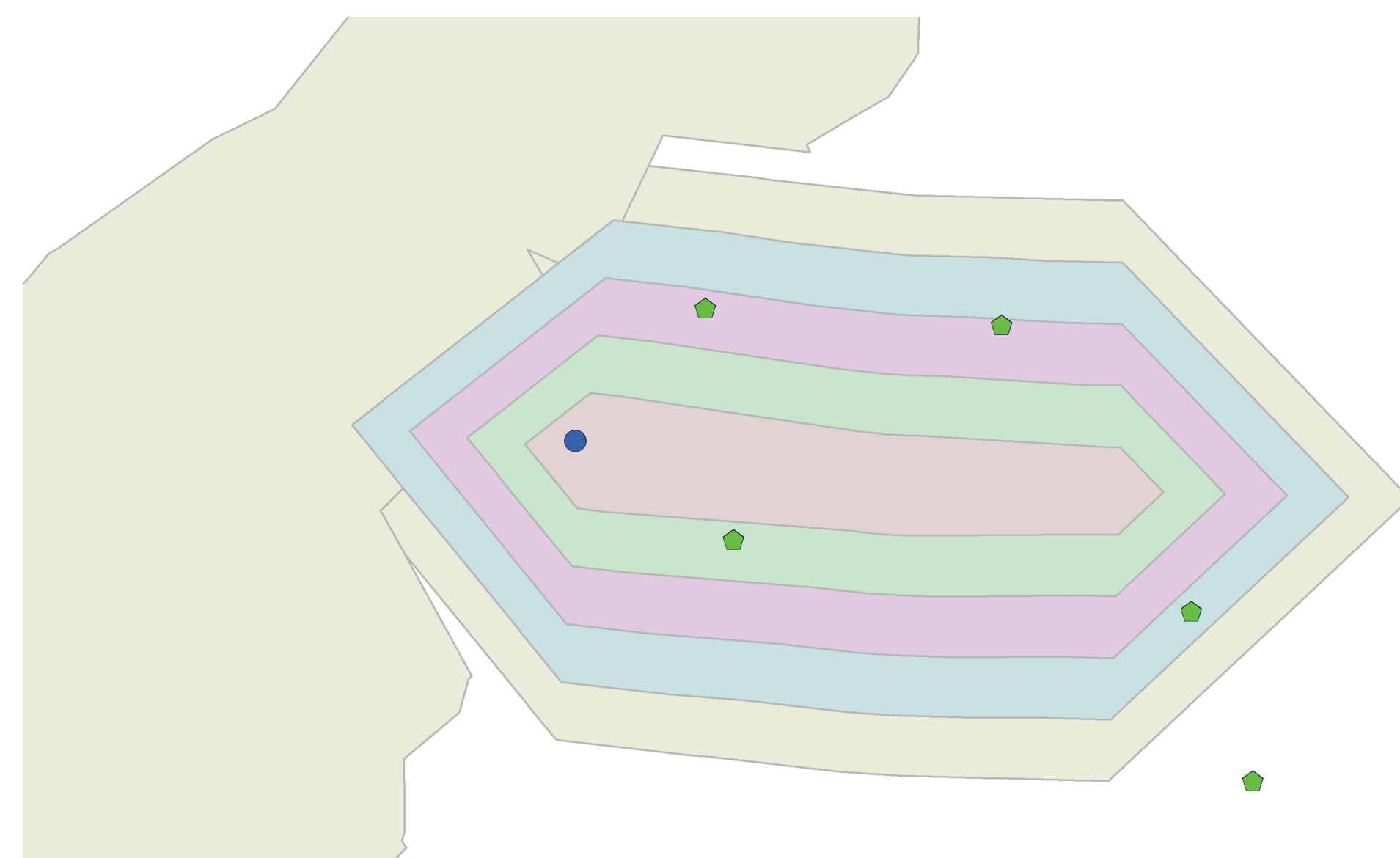
Cervantes, J (2002). *Indoor Marijuana Horticulture*. United States: Publisher information omitted.

City of Tacoma. City Clerk's Office. (2007). Tacoma Municipal Code. *TITLE 13: Land Use Regulatory Code*. Retrieved from <http://www.cityoftacoma.org/page.aspx?hid=1946>.

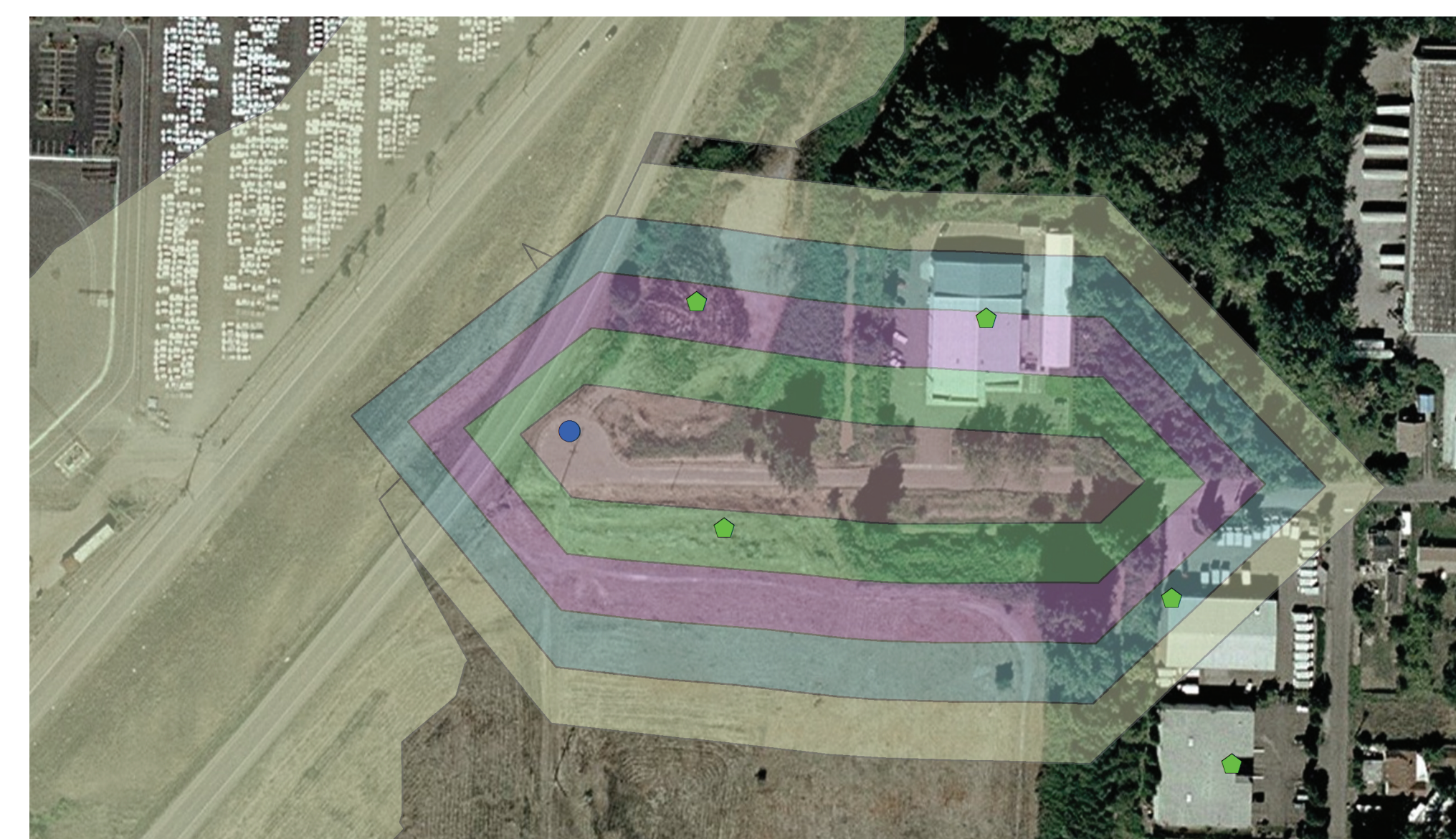
City of Tacoma: Department of Community and Economic Development, & Via Architecture. (2010). *Brewery District Development Concept Study*. Retrieved from <http://cms.cityoftacoma.org/Planning/Brewery%20District/>

Tacoma Parcel Analysis

- Warehouse Parcels
- Retail Store Location
- 1 Minute Drive Time
- 2 Minutes
- 3 Minutes
- 4 Minutes
- 5 Minutes



Final Network Analyst Parcel Selection Layer



Final Network Analyst Parcel Selection Aerial Layer