

WHAT CAN YOU DO WITH AN ART HISTORY DEGREE?

**Debby Hyde
Office of the Executive
Special Project Coordinator –
Habitat Protection and Restoration**



Pierce County

WHAT I WANT TO CONVEY

- You don't have to know exactly what you want
 - You personally don't have to know everything
 - Group projects are a good thing
 - You need to know how to listen
-
- **Multiple issues – multiple resources**

HOW?

**USE THE PUYALLUP RIVER
SYSTEM TO SHOW THE
COMPLEXITY OF WATER
ISSUES.**

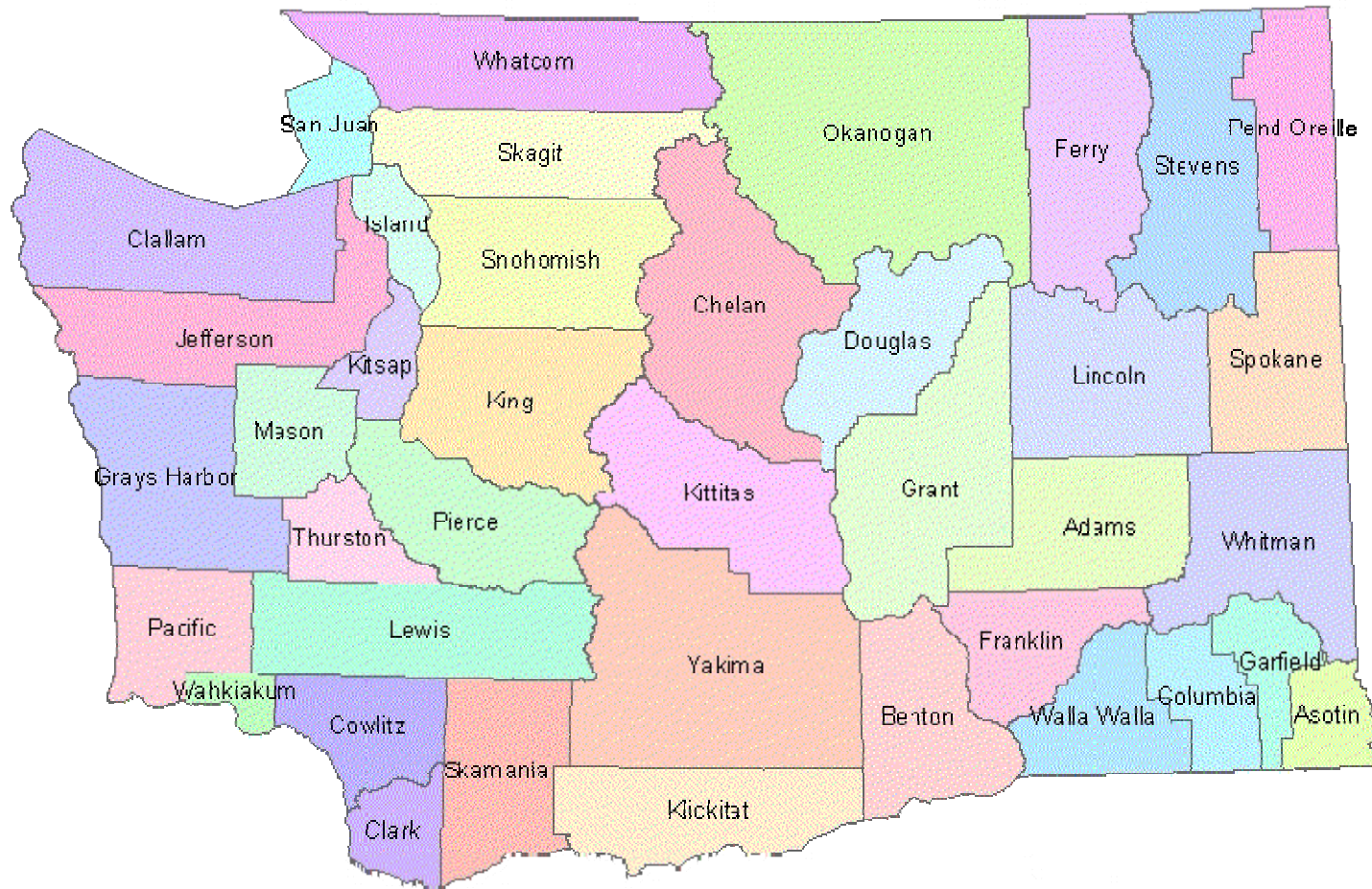
Pierce County community gets things done

- **Has supportive leadership**
- **Has a culture of cooperation**
- **Has always been fiscally constrained**



Pierce County

WHERE THE HECK IS PIERCE COUNTY?





PIERCE COUNTY STATE OF WASHINGTON



D. Grinstead GISP
/home/utwidgrinal/pc/piercoco.mxd

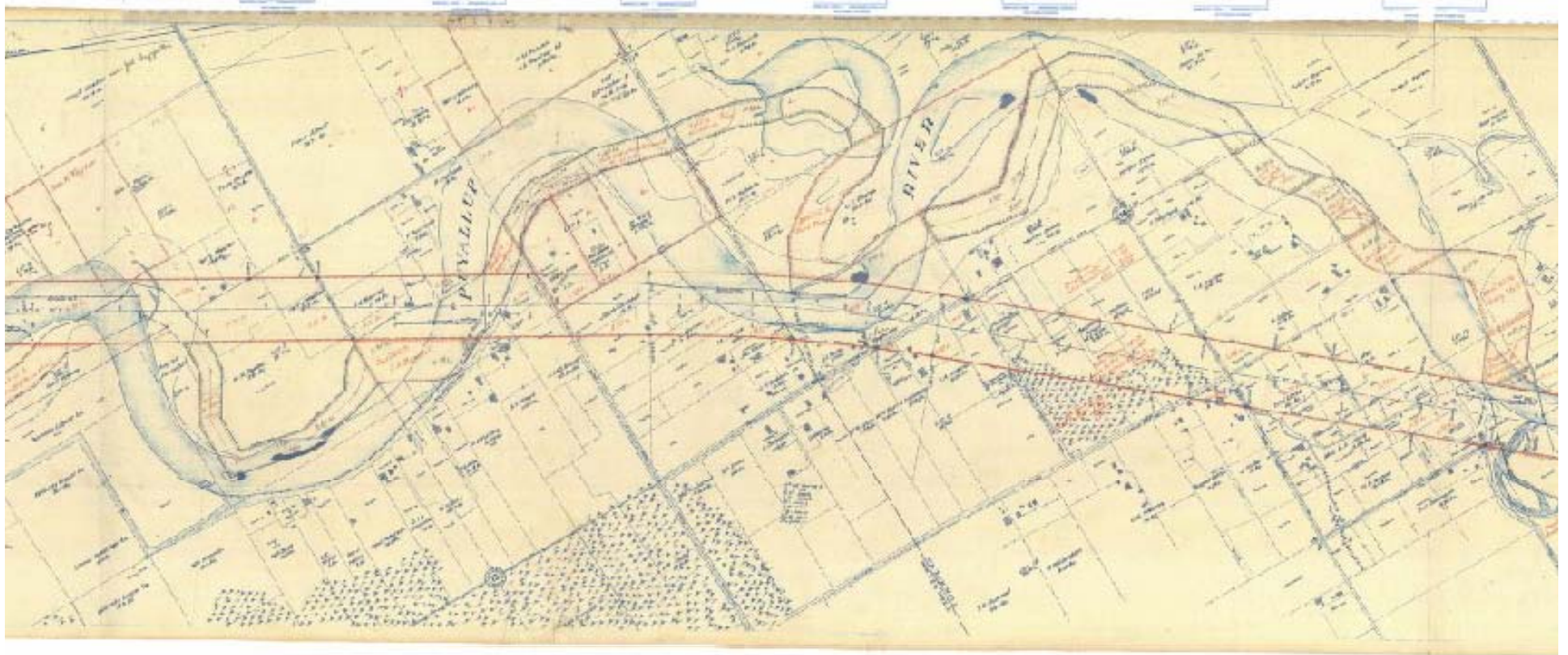
Source: Pierce County Data & Maps
ArcGIS 9 using ArcMap

WHITE RIVER – IMPACT ON FARMS



Neeley Farm - View of improvements from river - Break in foreground - St. & Sew. Dpt. Jan. 29-18 6. W.F.

1914 LEVEE CONSTRUCTION PLAN





1915 – GRAVEL TRANSPORT



1915 – CONCRETE SIDE SLOPE



1916 – BRUSH MATTING



1923 DRIFT BARRIER



Pointer 47°15'06.18" N 122°22'34.17" W elev 10 ft

Streaming | 100%

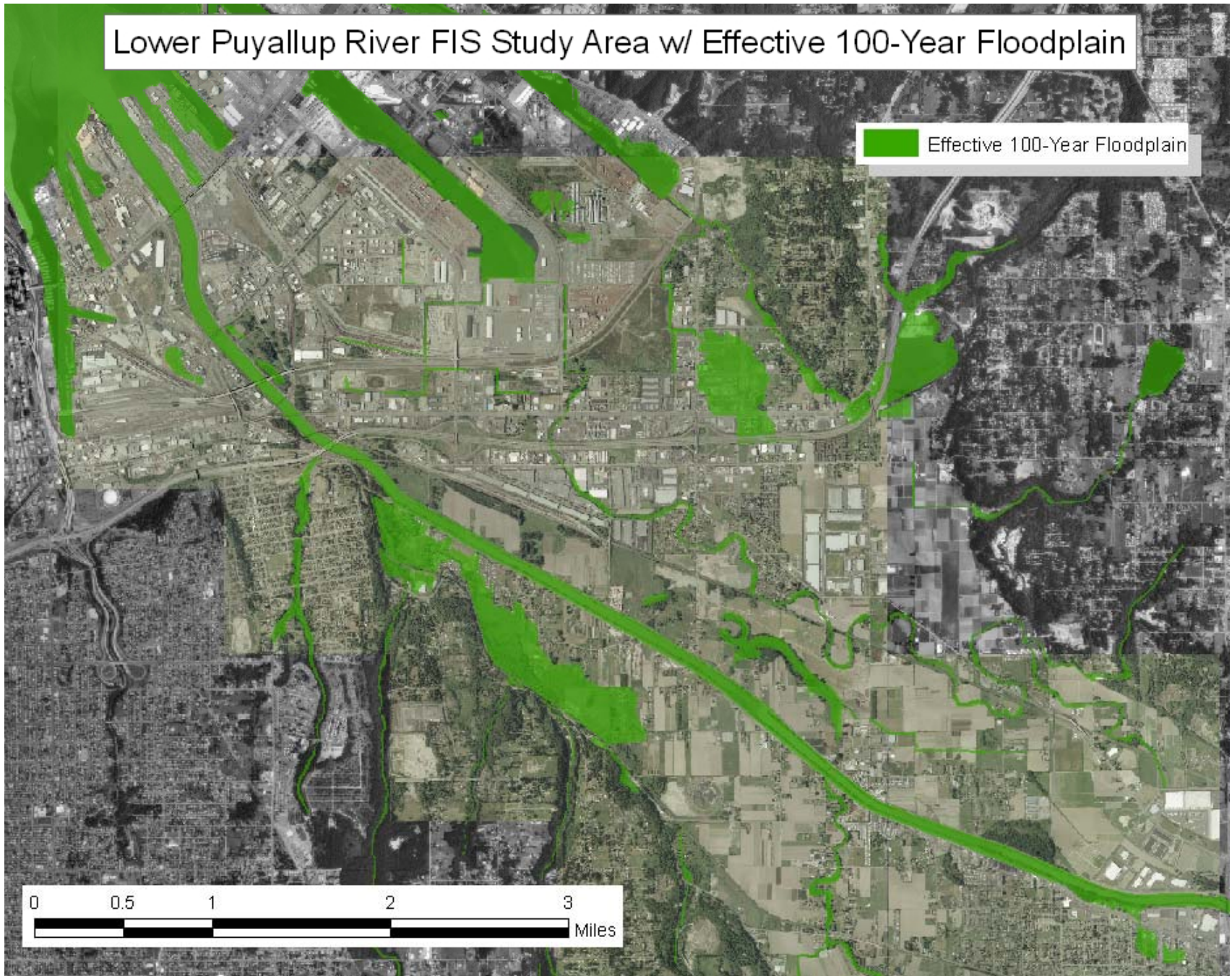
Eye alt 8929 ft





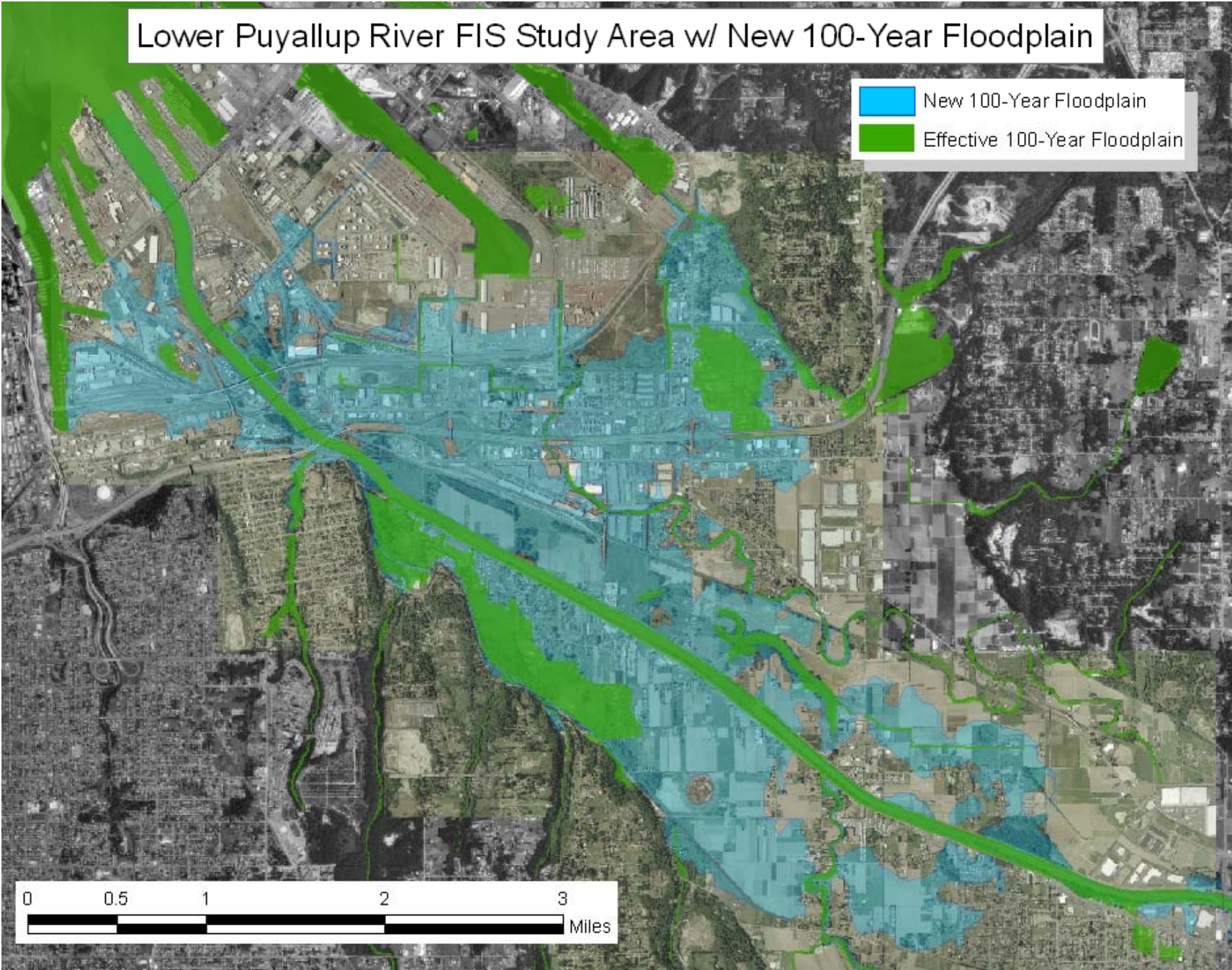
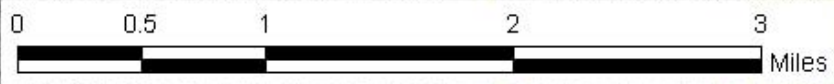
Lower Puyallup River FIS Study Area w/ Effective 100-Year Floodplain

Effective 100-Year Floodplain



Lower Puyallup River FIS Study Area w/ New 100-Year Floodplain

- New 100-Year Floodplain
- Effective 100-Year Floodplain











CHANNEL MIGRATION ZONE

NATURAL CHANNEL IMPACTS

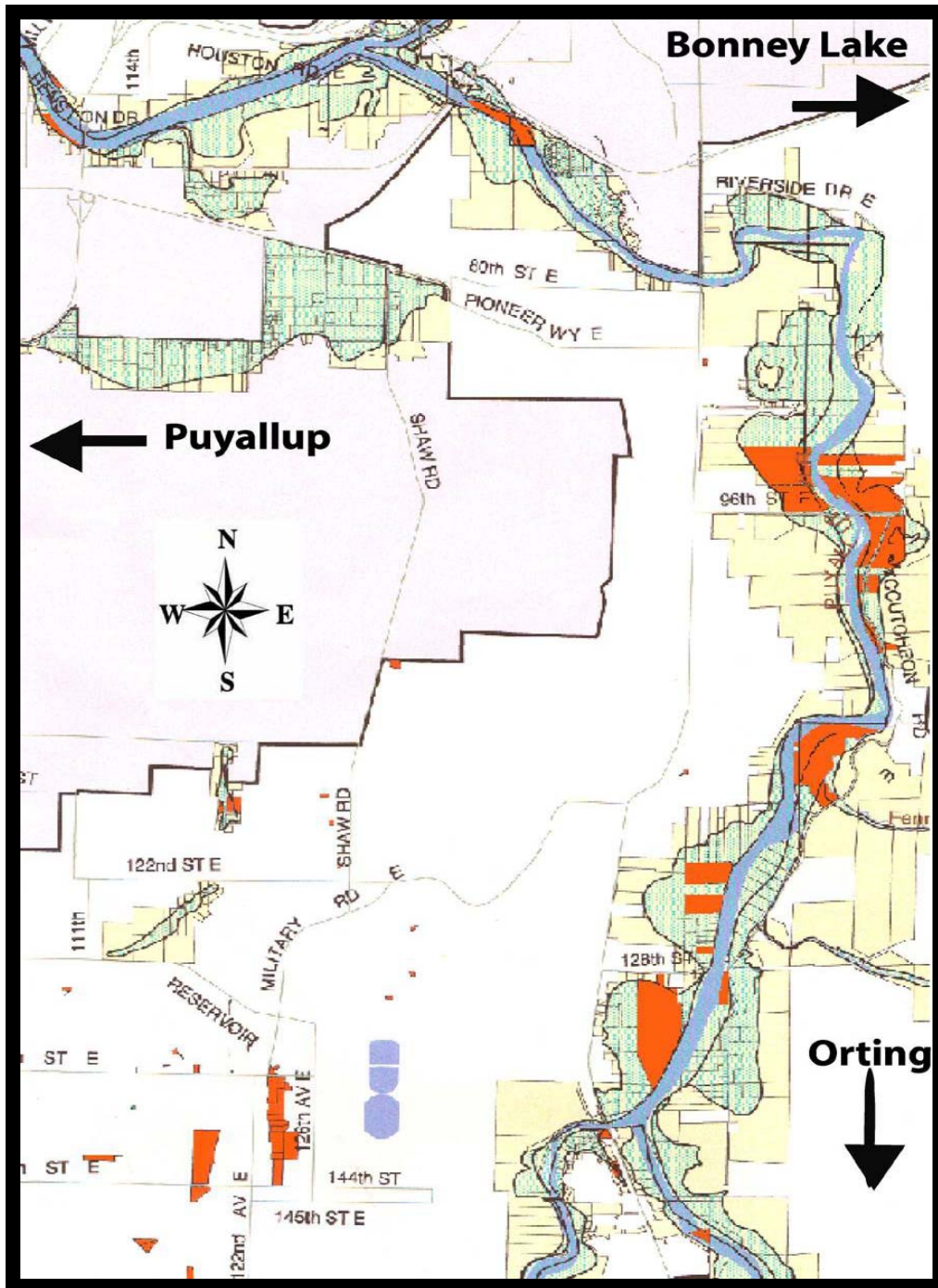


COMMUNITY PROJECTS



REGIONAL PROJECTS





**■ PURCHASED
REPETITIVE
LOSS
PROPERTIES**

HABITAT PROJECTS



RECONNECT OXBOWS



RECONNECT OXBOWS



PUYALLUP RIVER

ORIGINAL LEVEE SETBACK PROJECT



NATURAL CHANNEL IMPACTS



597-0111

1-12-97

1"=660'

13-3

**PUYALLUP
RIVER
(RM AREA 24.4)**

**EXISTING LEVEE
PRIOR TO FEB '96
FLOOD EVENT**

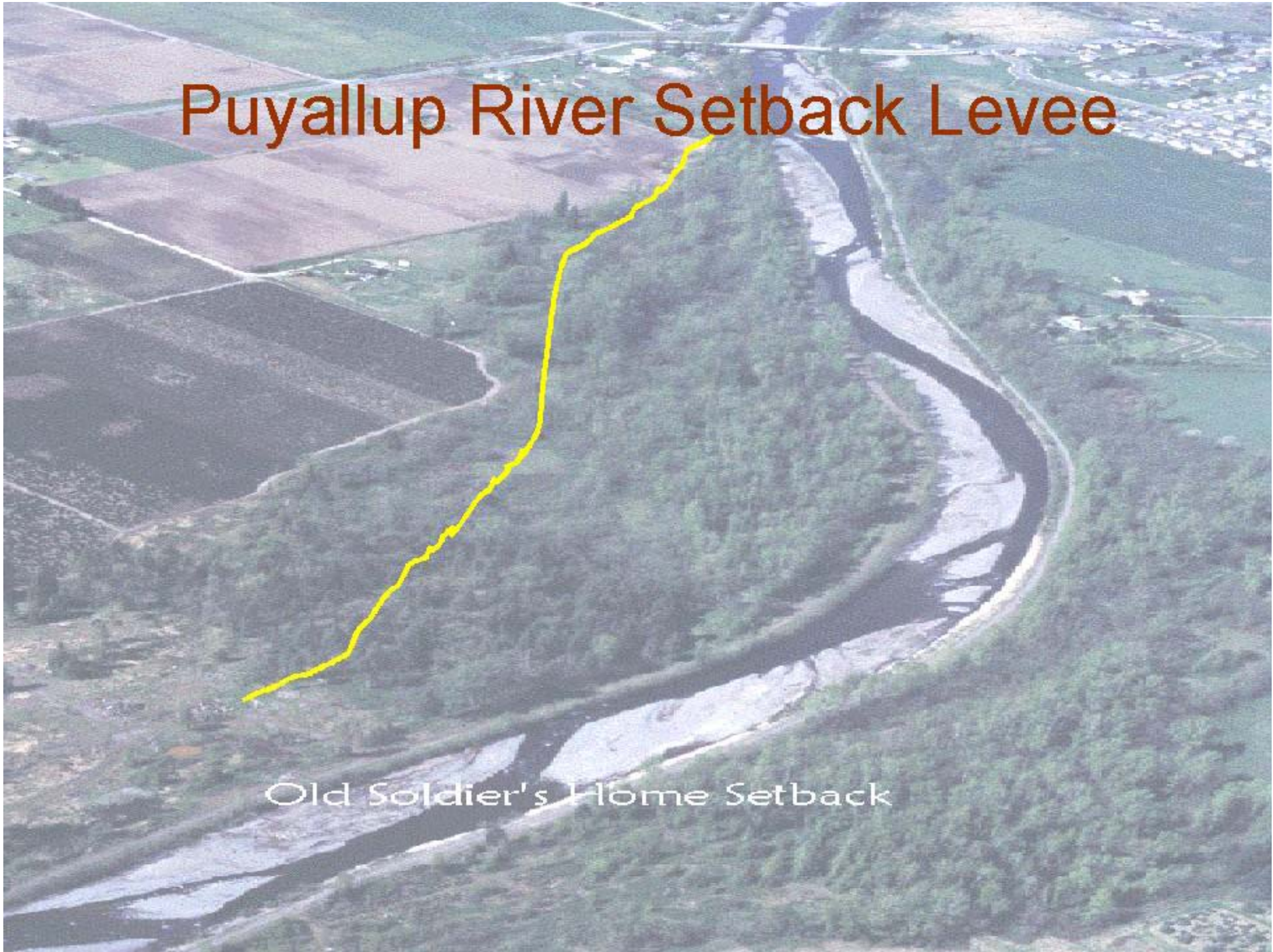
Flat of 'The Country

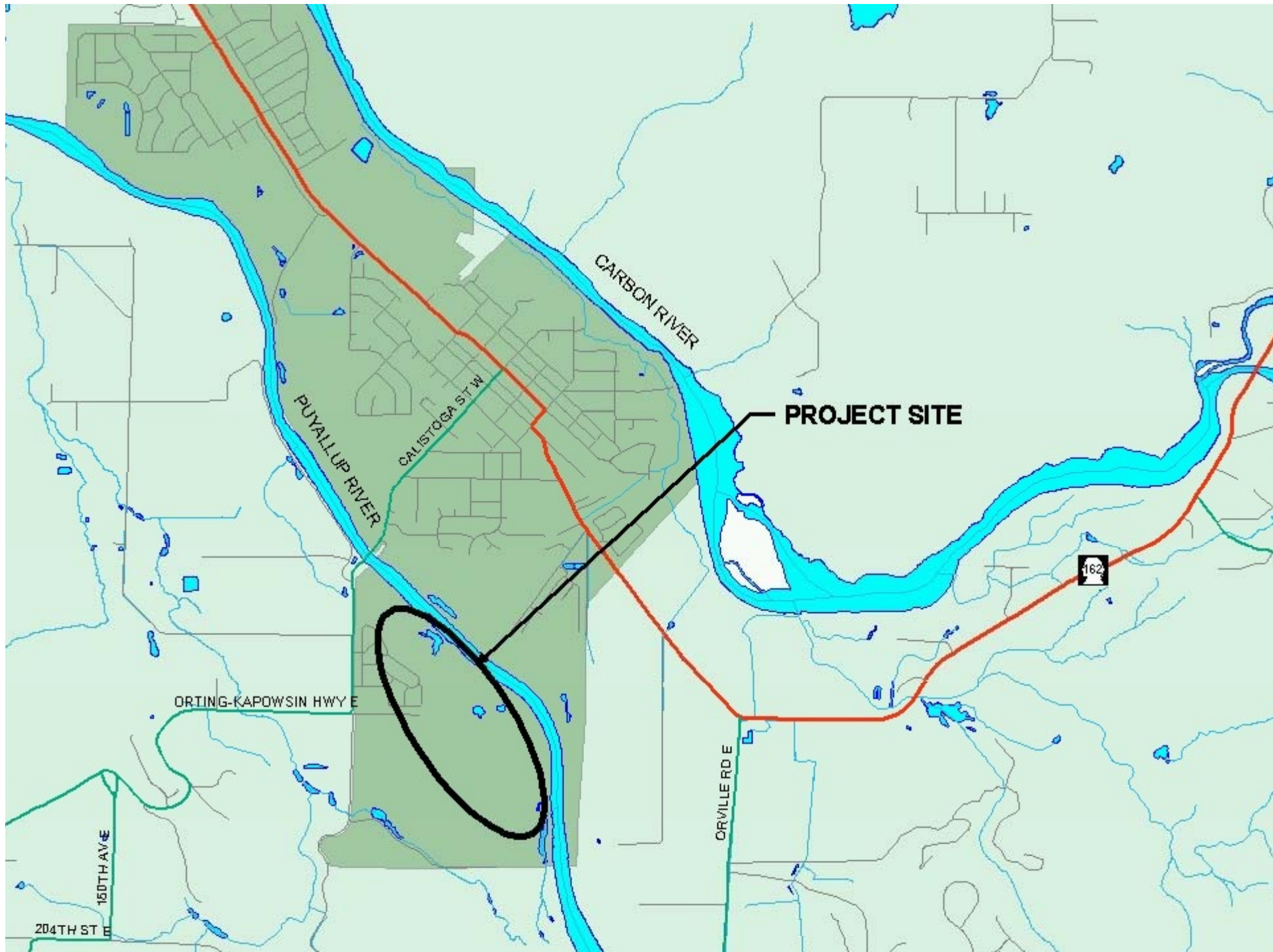
Orville Road



Puyallup River Setback Levee

Old Soldier's Home Setback











SETBACK LEVEL









Pierce County