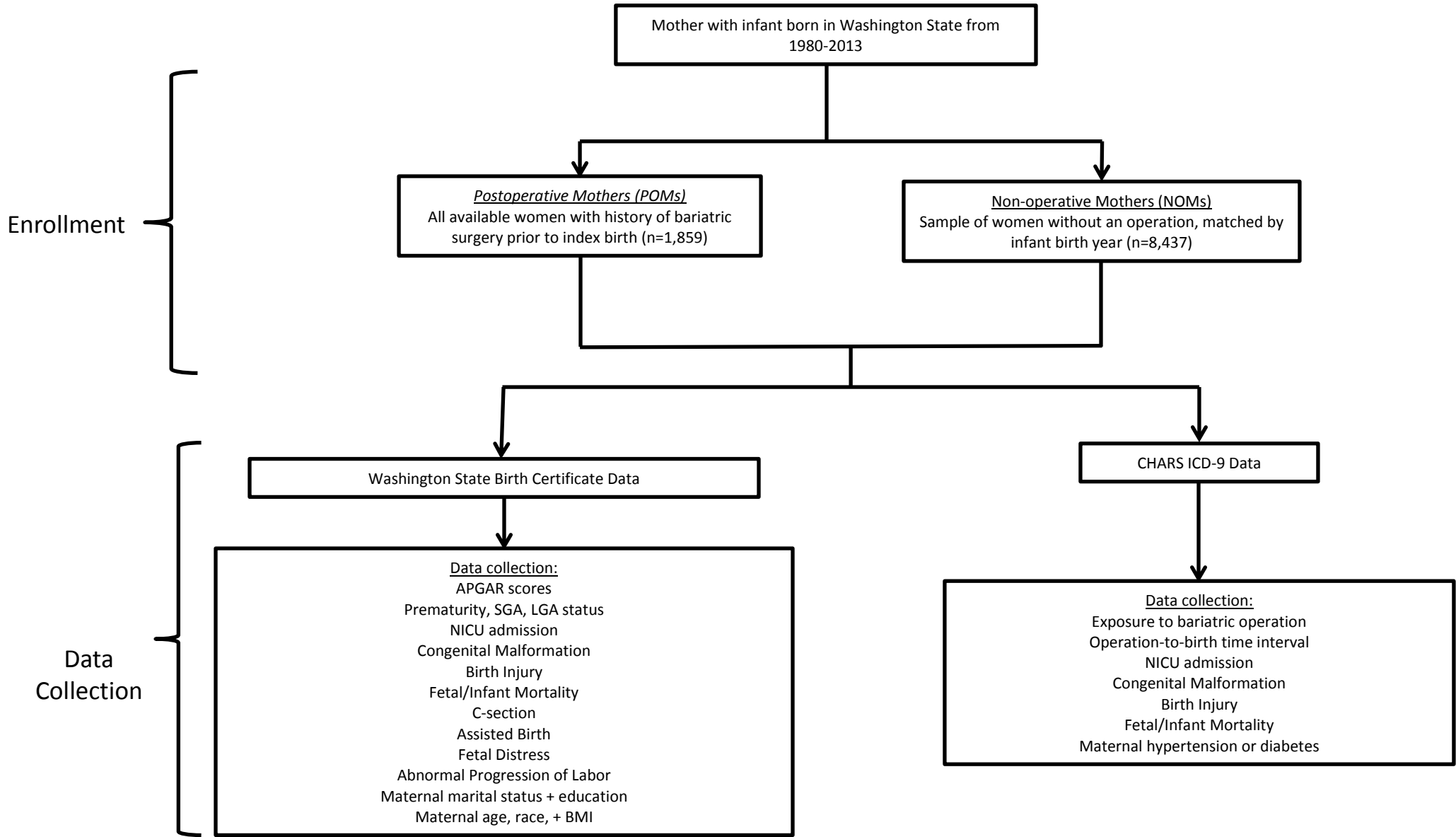


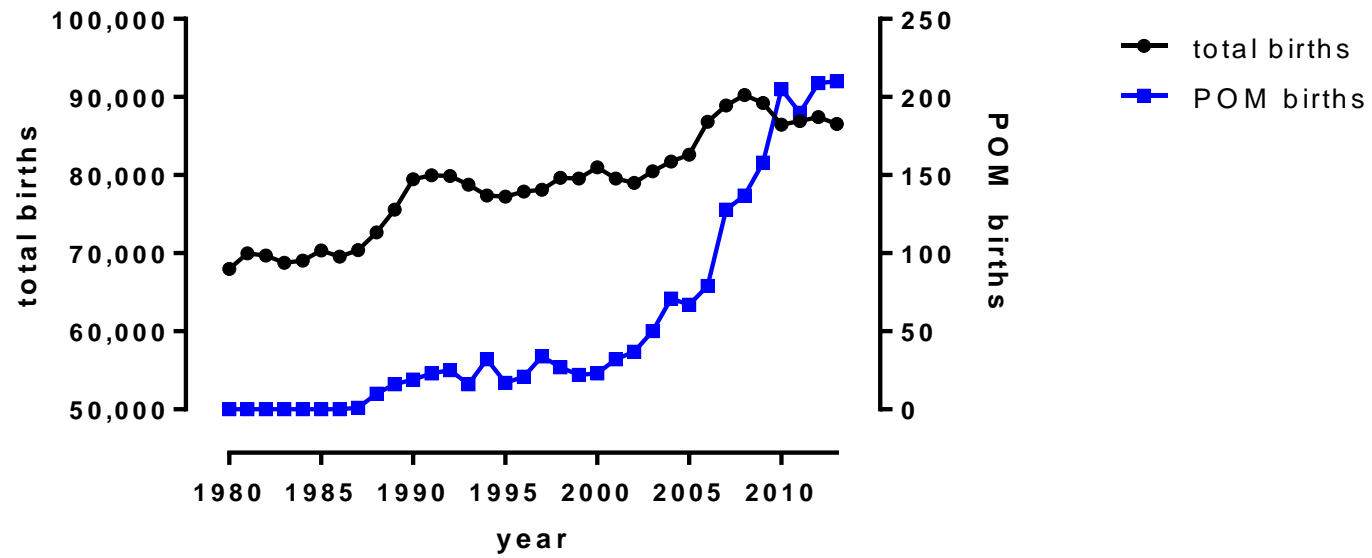
Figure 1. Flow diagram for a retrospective cohort study of Washington State mothers with bariatric operations and their infants.



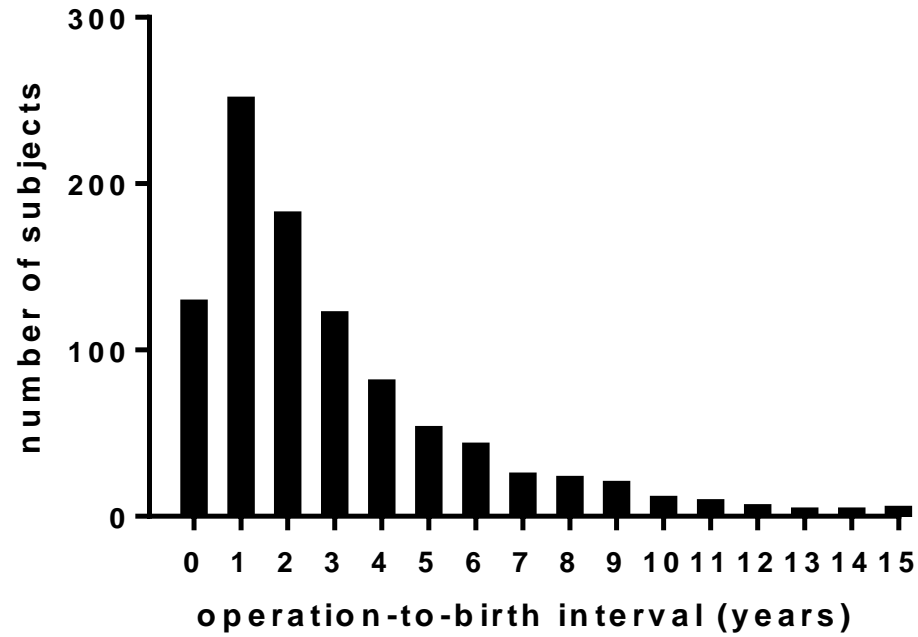
BMI=body mass index, CHARS= Comprehensive Hospital Abstract Reporting System, LGA/SGA=large/small for gestational age, NICU=neonatal intensive-care unit, NOMs=non-operative mothers, POMs= postoperative mothers.

Figure 2. From 1980-2013 in Washington State: a) total births and births from mothers with a prior bariatric surgery, and b) operation-to-birth intervals in mothers with a prior bariatric surgery.^a

a)



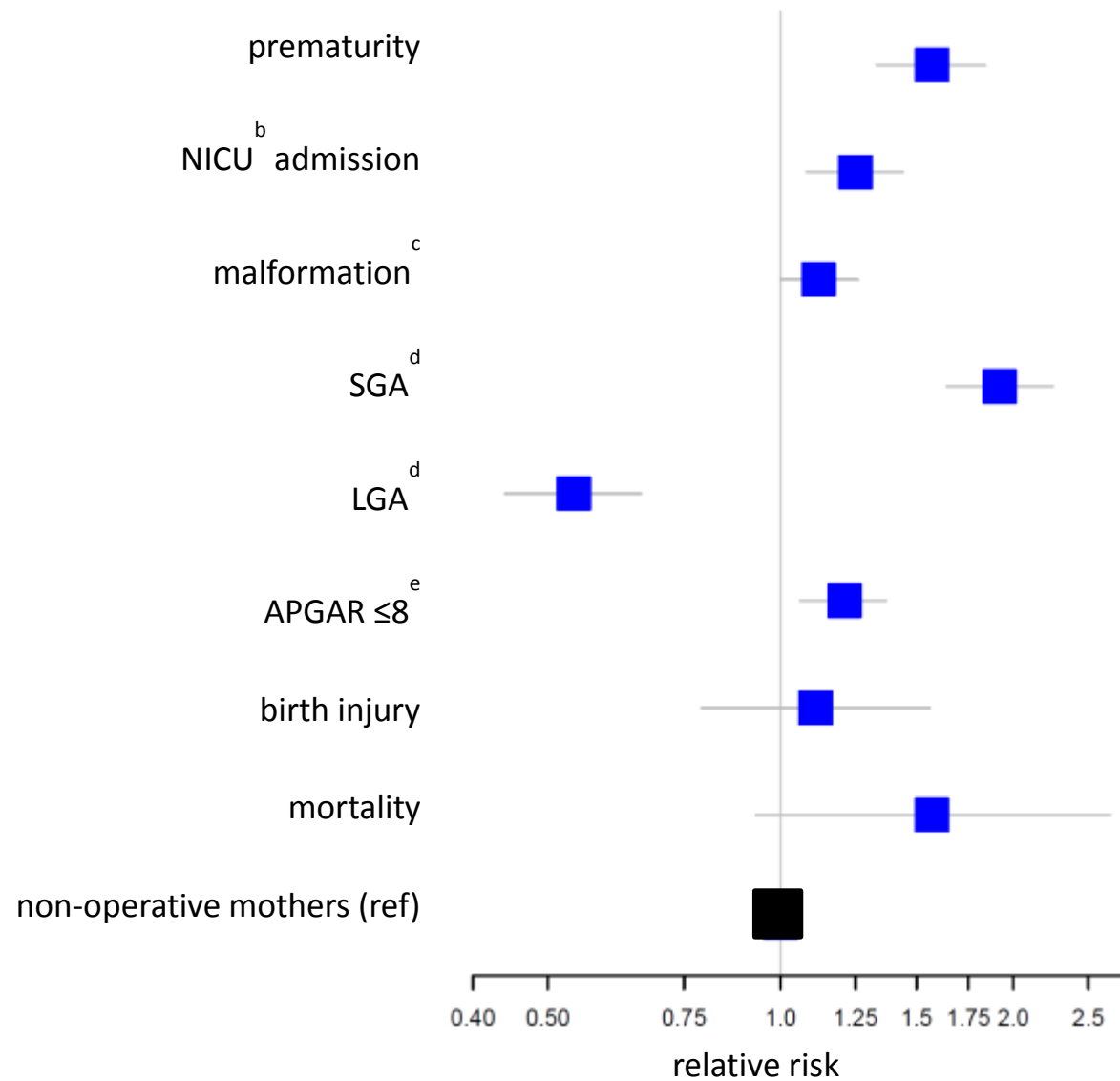
b)



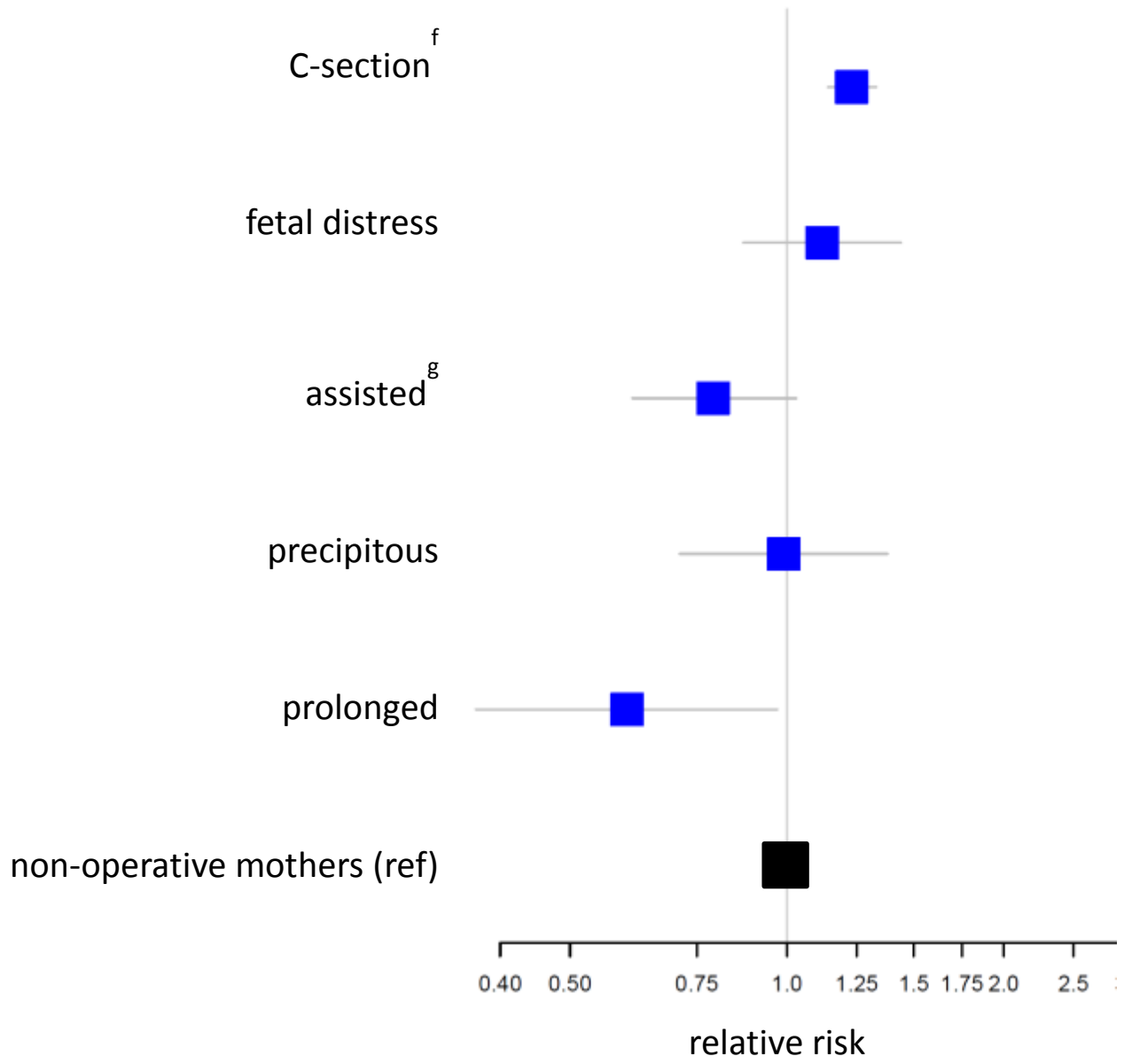
a: Data were obtained from Washington State Birth Certificates, linked with maternal hospital discharge data from the Comprehensive Hospital Abstract Reporting System.
POM='postoperative mothers' / mothers with a history of a bariatric surgery

Figure 3. Figure 3. a) Neonatal and b) labor outcomes for mothers with a prior bariatric surgery, compared to mothers who did not have an operation (non-operative mothers); c) neonatal outcomes and the operation-to-birth (OTB) interval in mothers with a prior bariatric surgery.^a

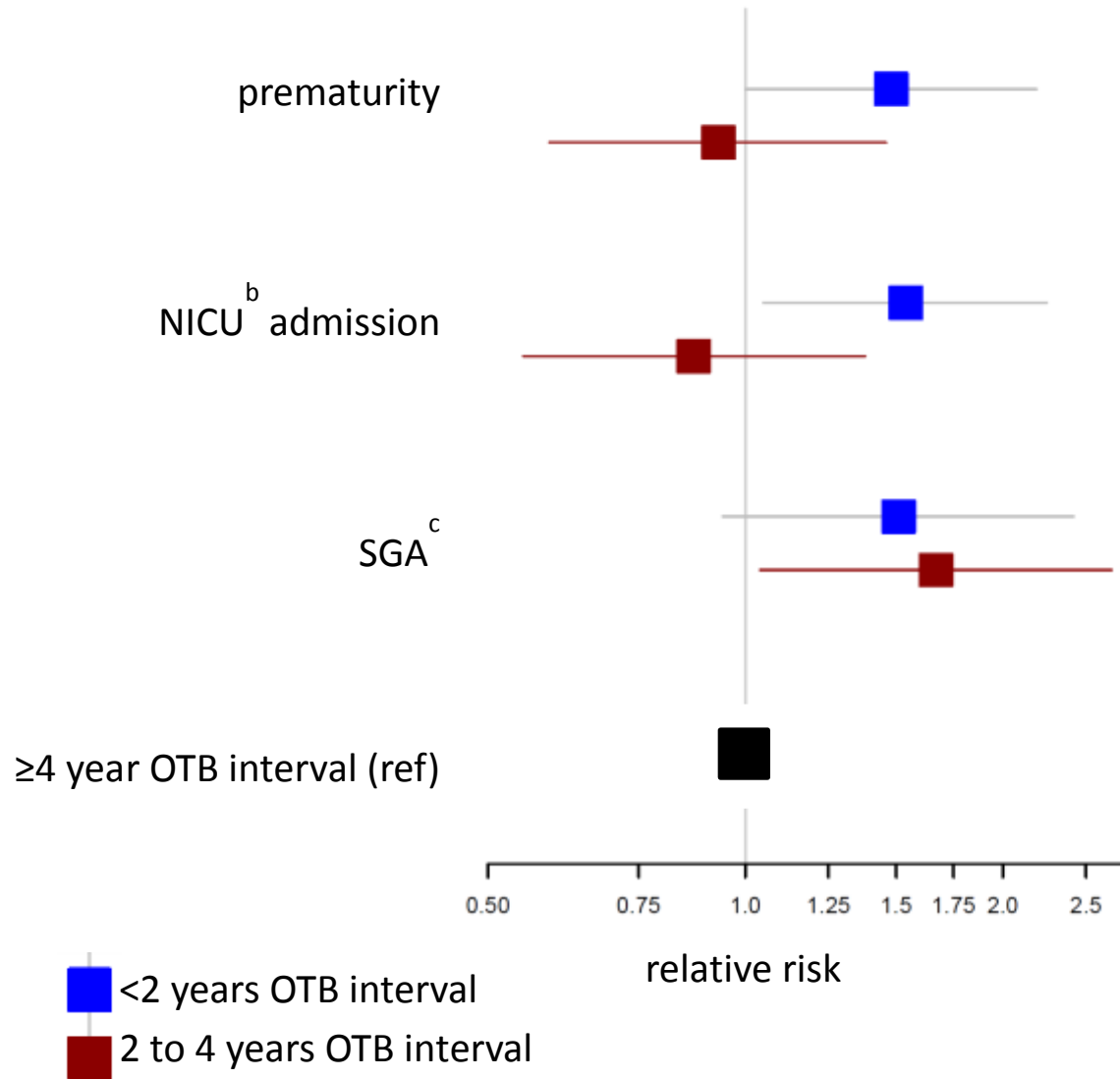
a)



b)



c)



a: Data were obtained from Washington State Birth Certificates from 1980-2013, linked with maternal hospital discharge data from the Comprehensive Hospital Abstract Reporting System (CHARS). Adjusted relative risks and 95% confidence intervals are presented, using Poisson regression with model structure as follows: 1) exposure: operation, or operation-to-birth interval, 2) outcomes: as listed above, and 3) maternal covariates: categorical variables for birth year, race, education, parity, diabetes, hypertension, pre-pregnancy body mass index, and linear spline variables for age and income. Missing body mass index values were imputed.

b: Neonatal Intensive Care Unit

c: Congenital malformation defined by ICD-9 codes 740-756

d: Small/Large for Gestational Age

e: "Appearance, Pulse, Grimace, Activity, Respiration" score, to quickly summarize newborn health, measured at 5 minutes after birth.

f: Cesarean section

g: assisted labor defined as vacuum or forceps use to assist vaginal delivery