

Persistent Tracers of Historic Ice Flow in Glacial Stratigraphy near Kamb Ice Stream, West Antarctica - Supporting Data

[Published in support of a paper by the same name, published in “The Cryosphere” in 2008]

Nicholas Holschuh, Knut Christianson, Howard Conway, Robert Jacobel, Brian Welch

This archive contains the following files:

RadarMetadata.pdf
STO_3km_downstream_mig.mat
STO_6km_upstream_mig.mat
STO_by_sl_000_049_mig.mat
STO_byrd_cross_mig.mat
STO_return_to_byrd_mig.mat
UW_r1end1_r2end1_mig.mat
UW_r1end1_rcamp_5mhz_mig.mat
UW_r1end1_rcamp_mig.mat
UW_r2end1_r3end1_mig.mat
UW_r2end2_r2end1_mig.mat
UW_r3end2_r3end1_mig.mat

.mat File Structure:

Each radar data file contains the following 7 variables:

elev: Elevation of the radar system during acquisition. (1 x M)

lat: Latitude of the subsurface reflection point. (1 x M)

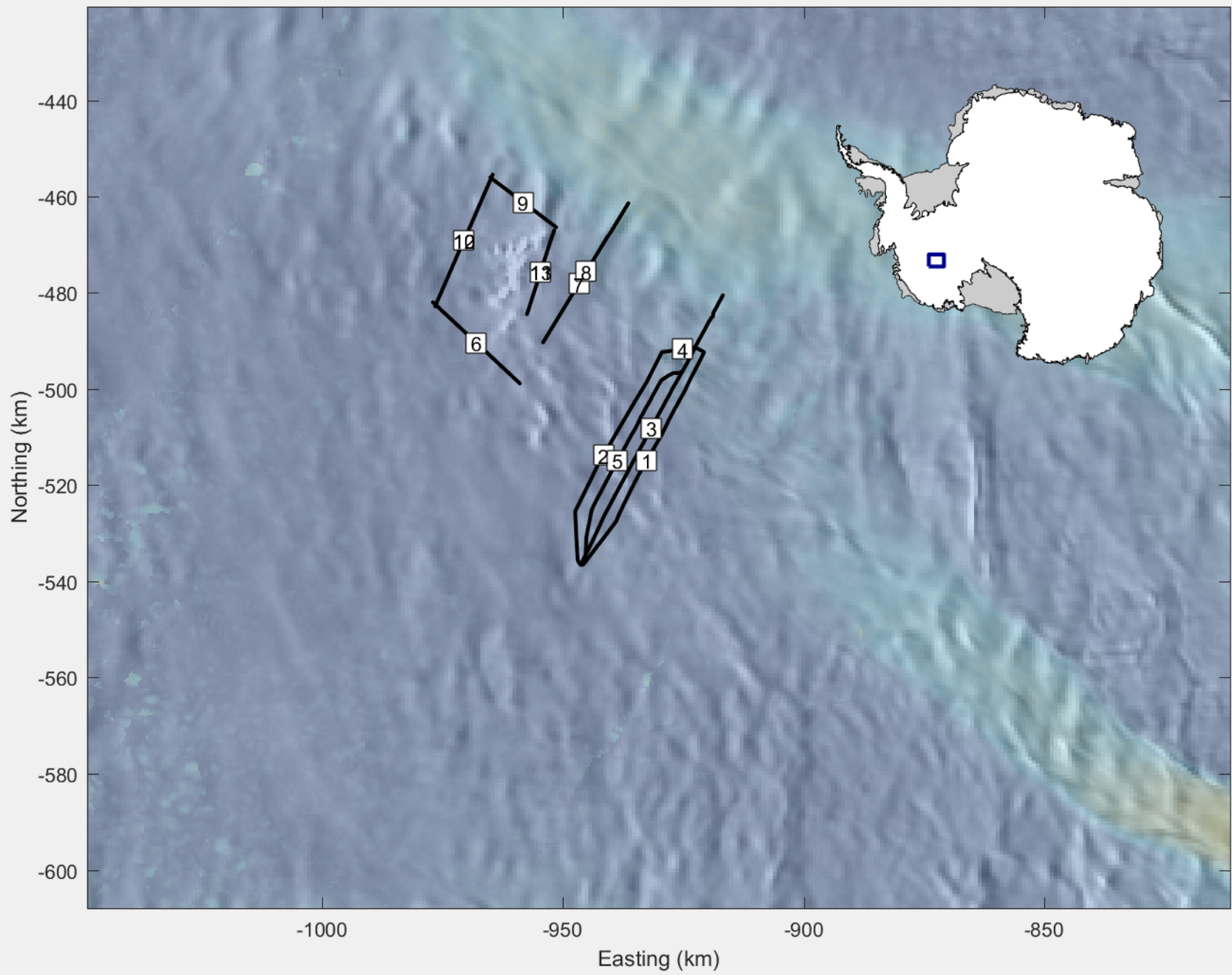
long: Longitude of the subsurface reflection point. (1 x M)

migdata: FK Migrated radar images of the subsurface (recorded as amplitude). N x M matrix, where N is the number of samples per trace, and M is the number of traces.

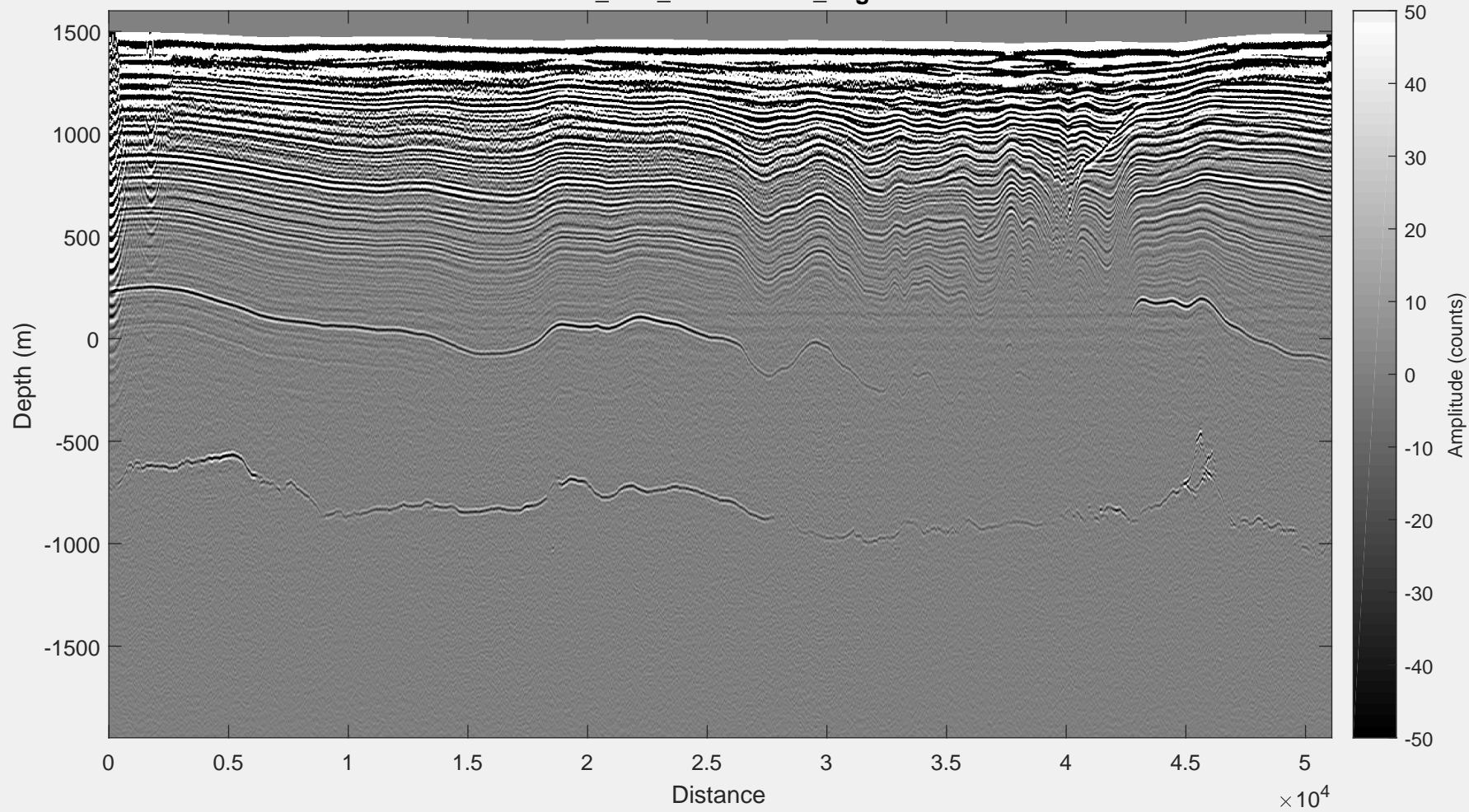
travel_time: fast-time axis for acquisition, associated with individual samples of a trace. (1 x N)

x_coord: Polar stereographic (x) coordinate for subsurface reflection point. (1 x M) (-71°,0°)

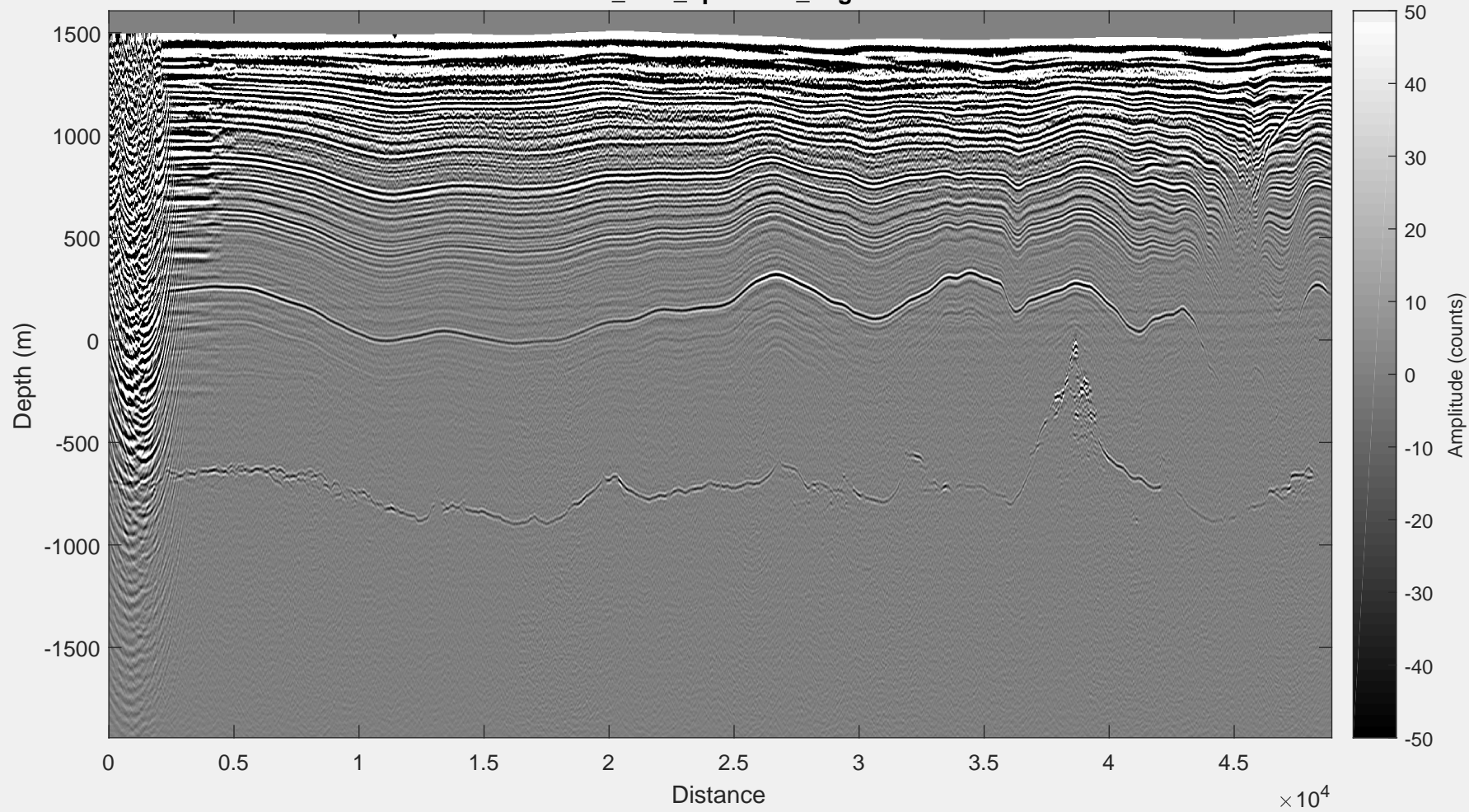
y_coord: Polar stereographic (y) coordinate for subsurface reflection point. (1 x M) (-71°,0°)



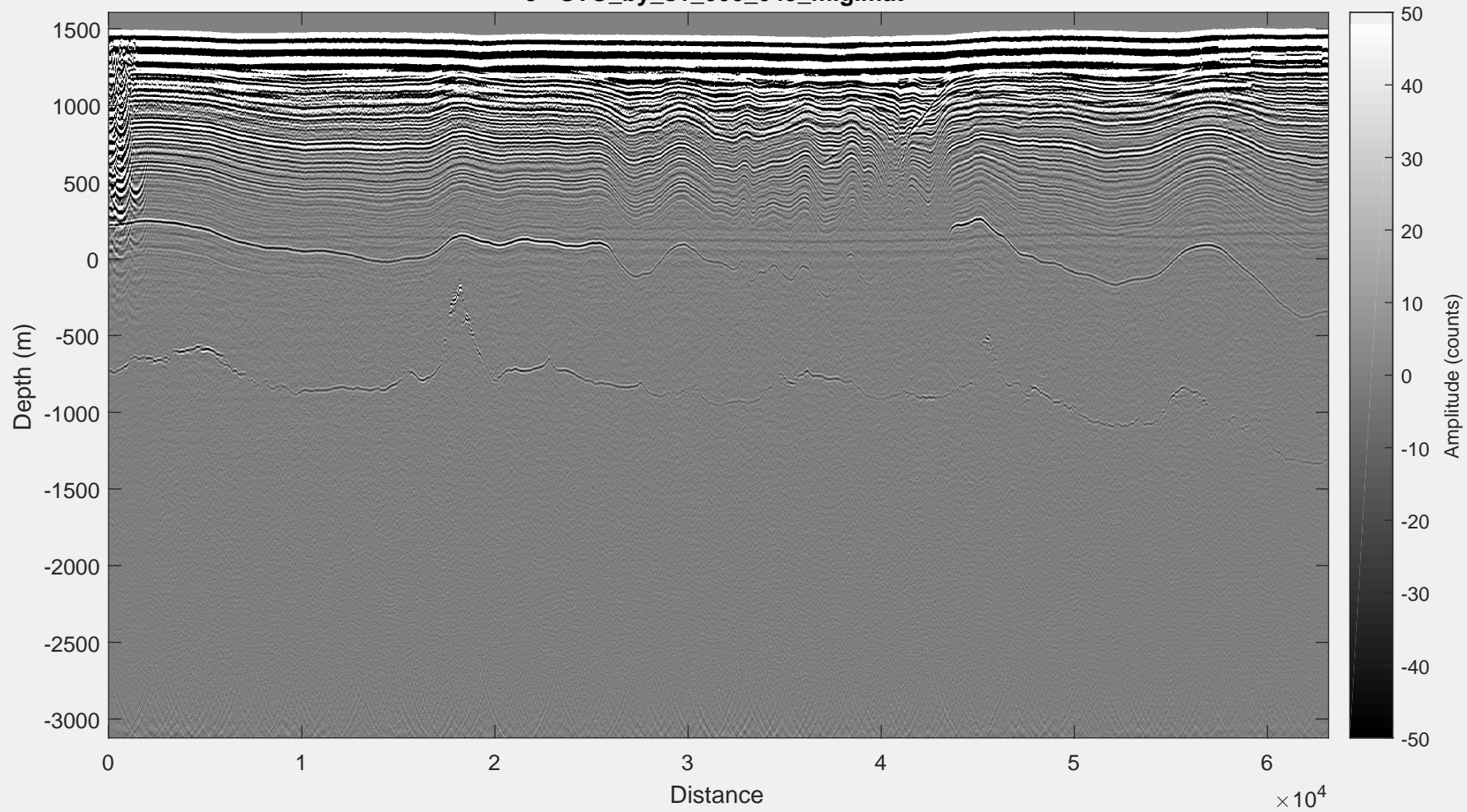
1 - STO_3km_downstream_mig.mat



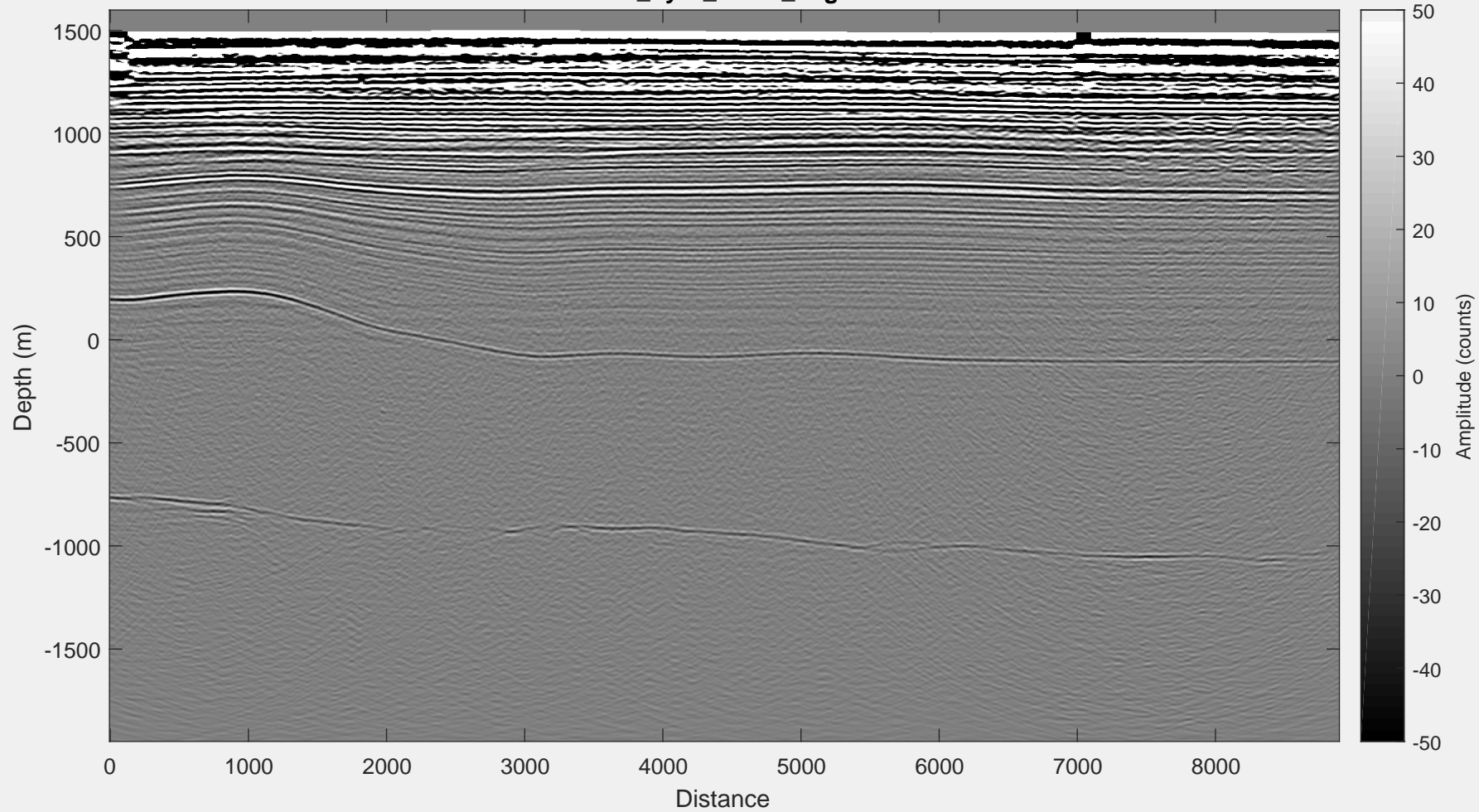
2 - STO_6km_upstream_mig.mat



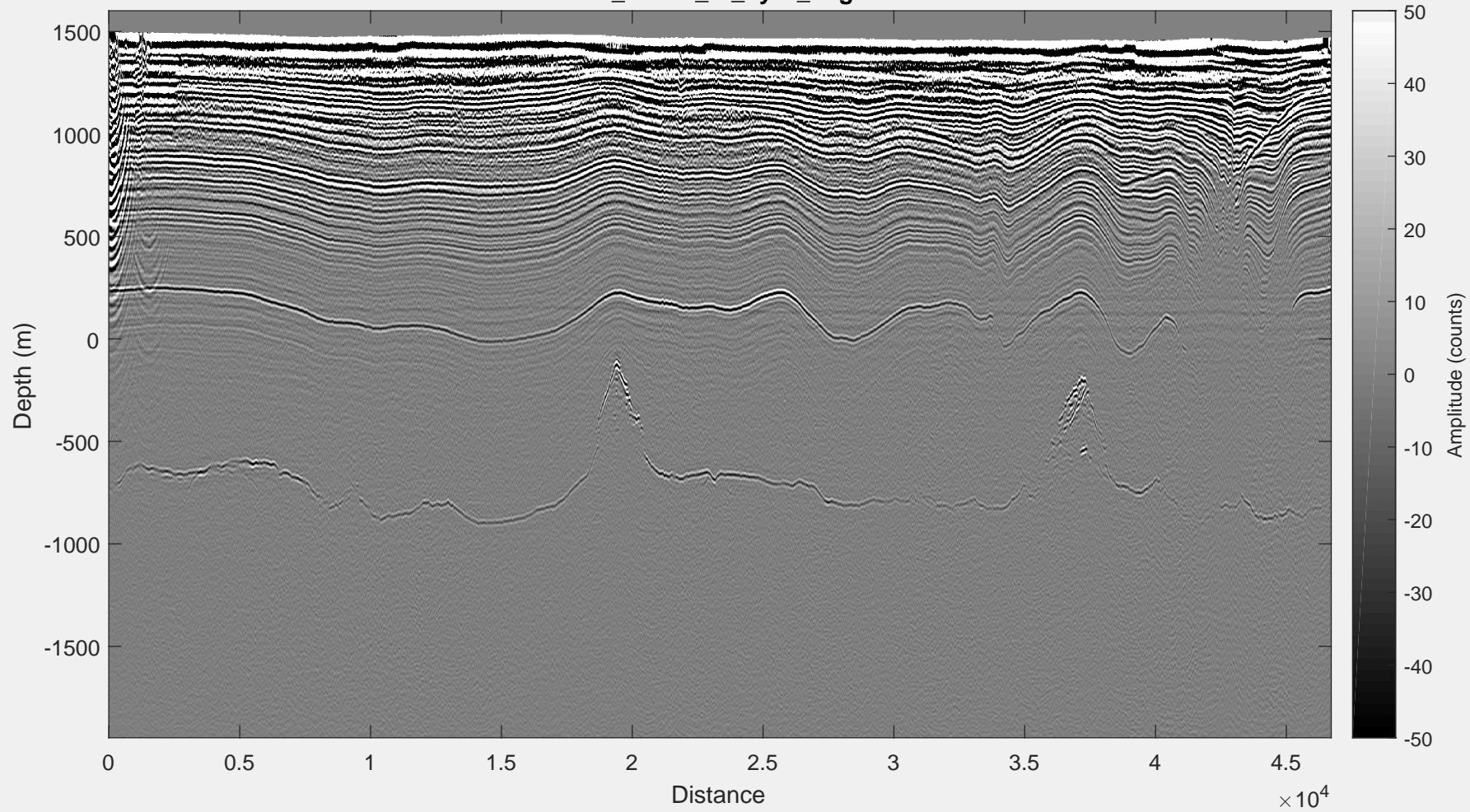
3 - STO_by_s1_000_049_mig.mat



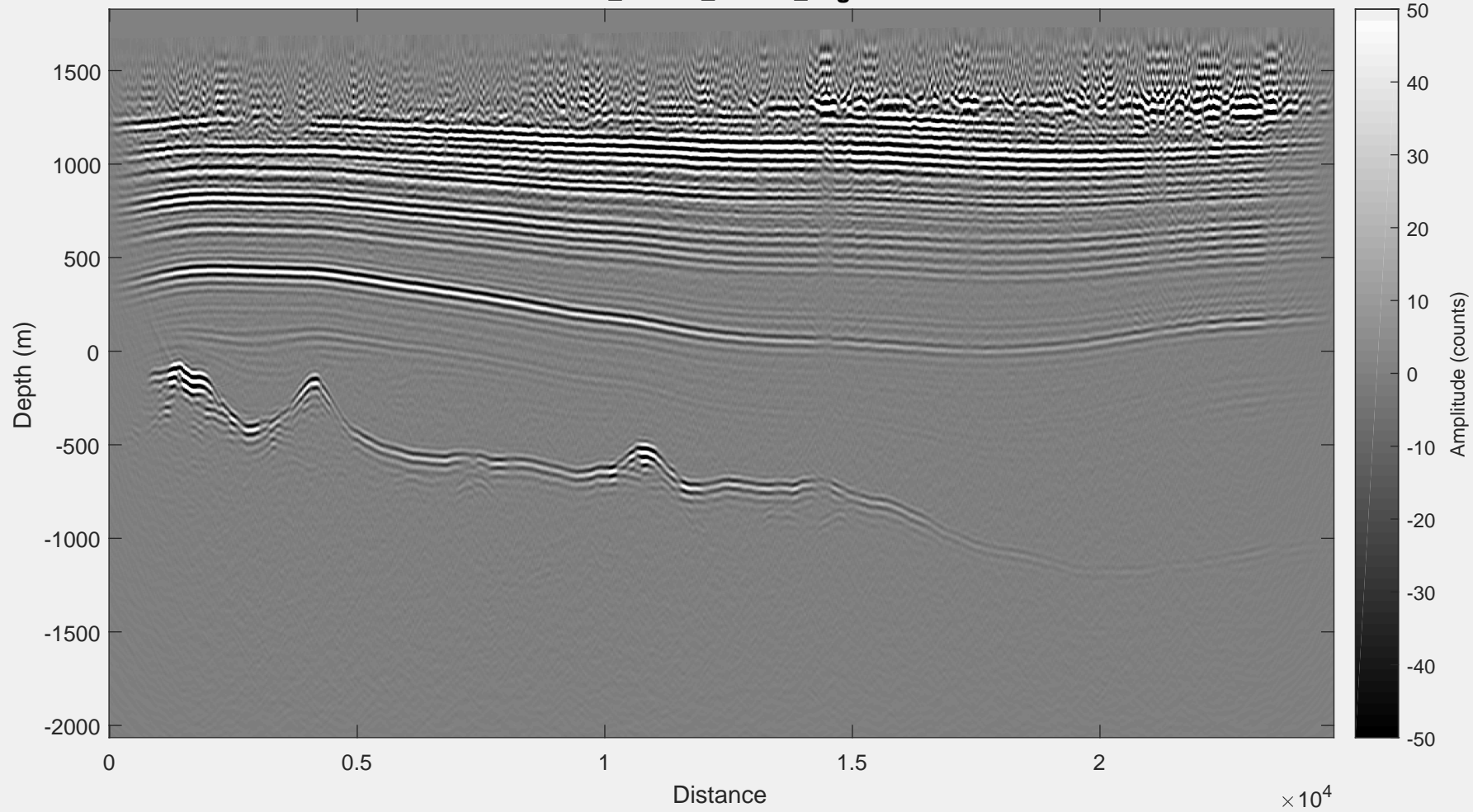
4 - STO_byrd_cross_mig.mat



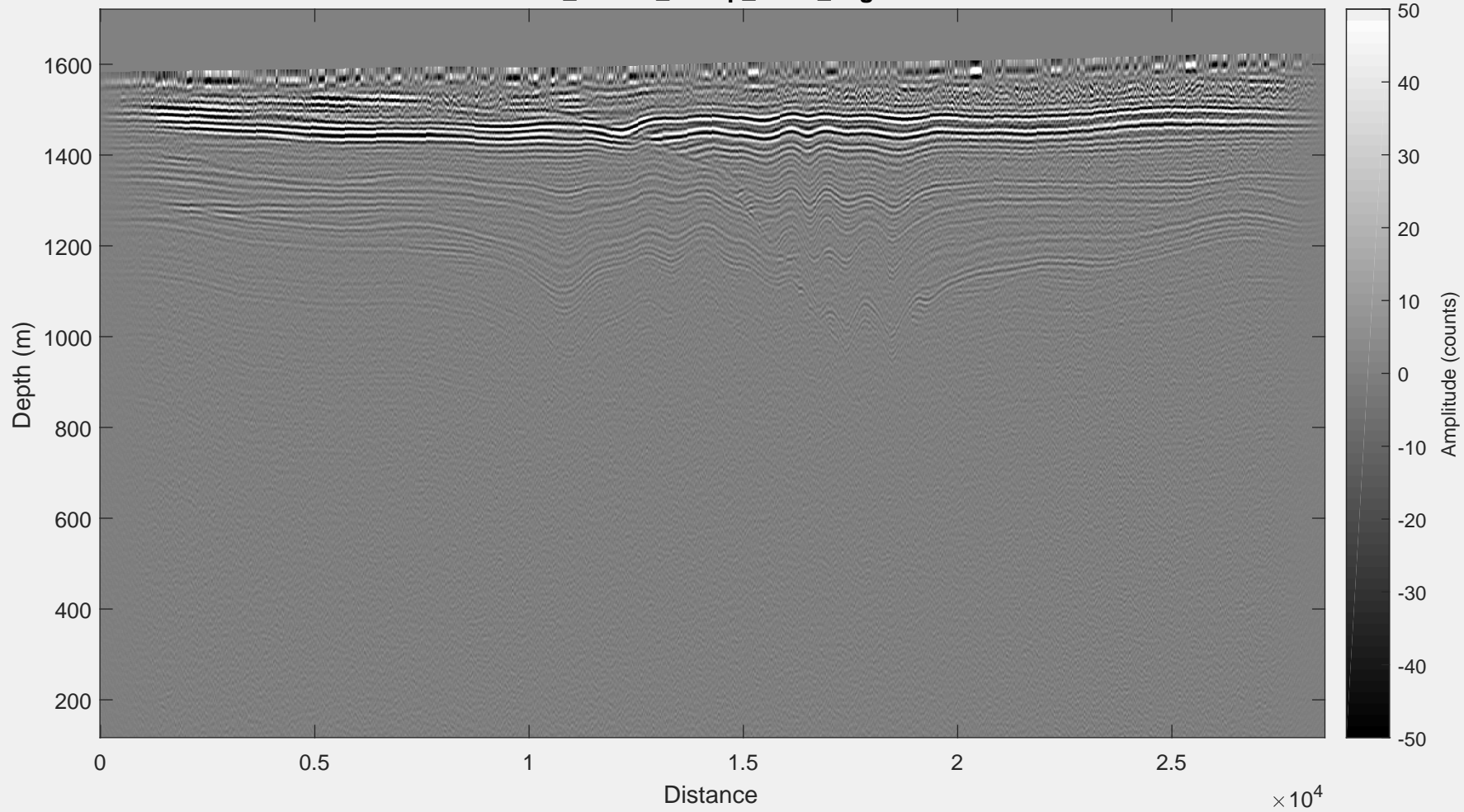
5 - STO_return_to_byrd_mig.mat



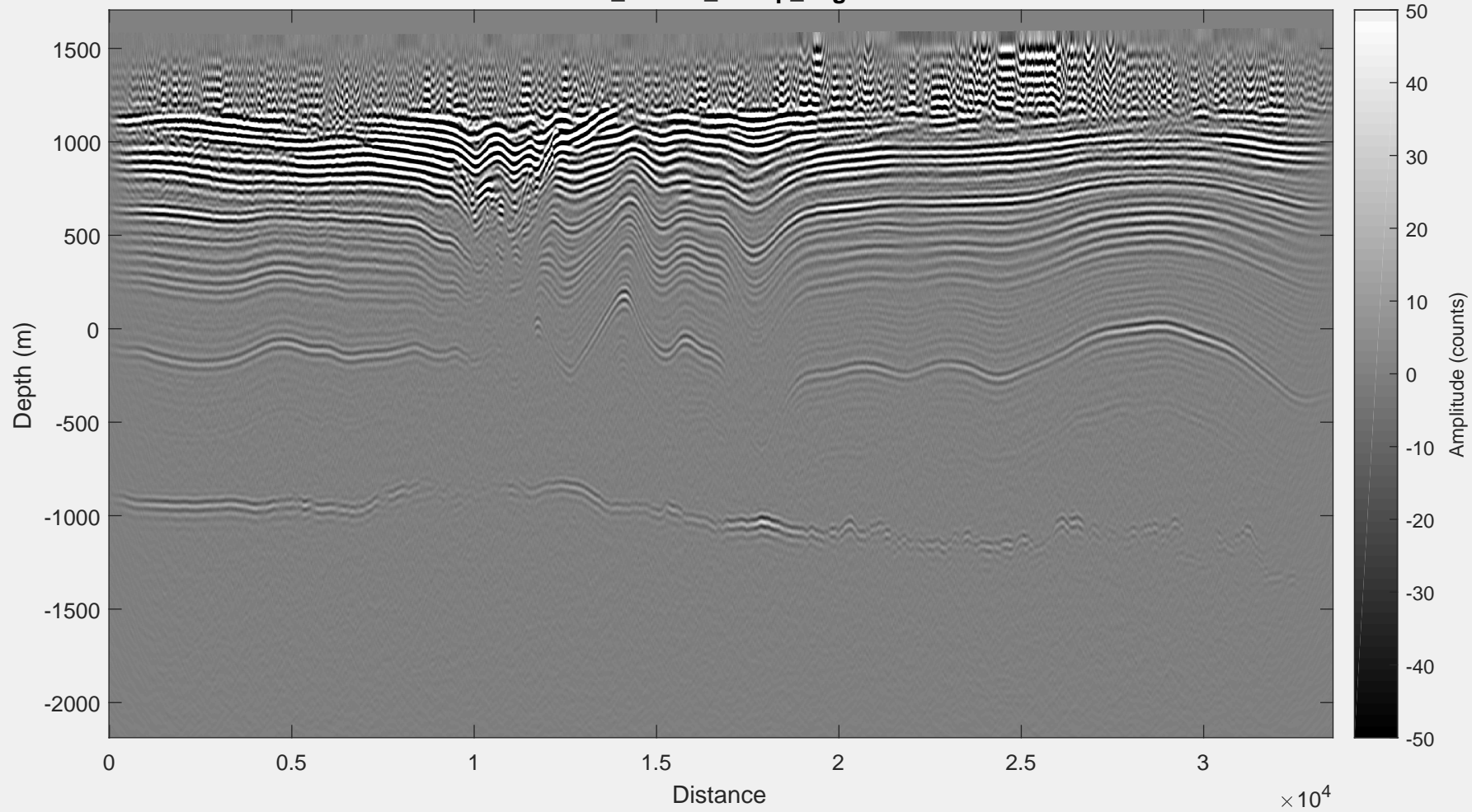
6 - UW_r1end1_r2end1_mig.mat



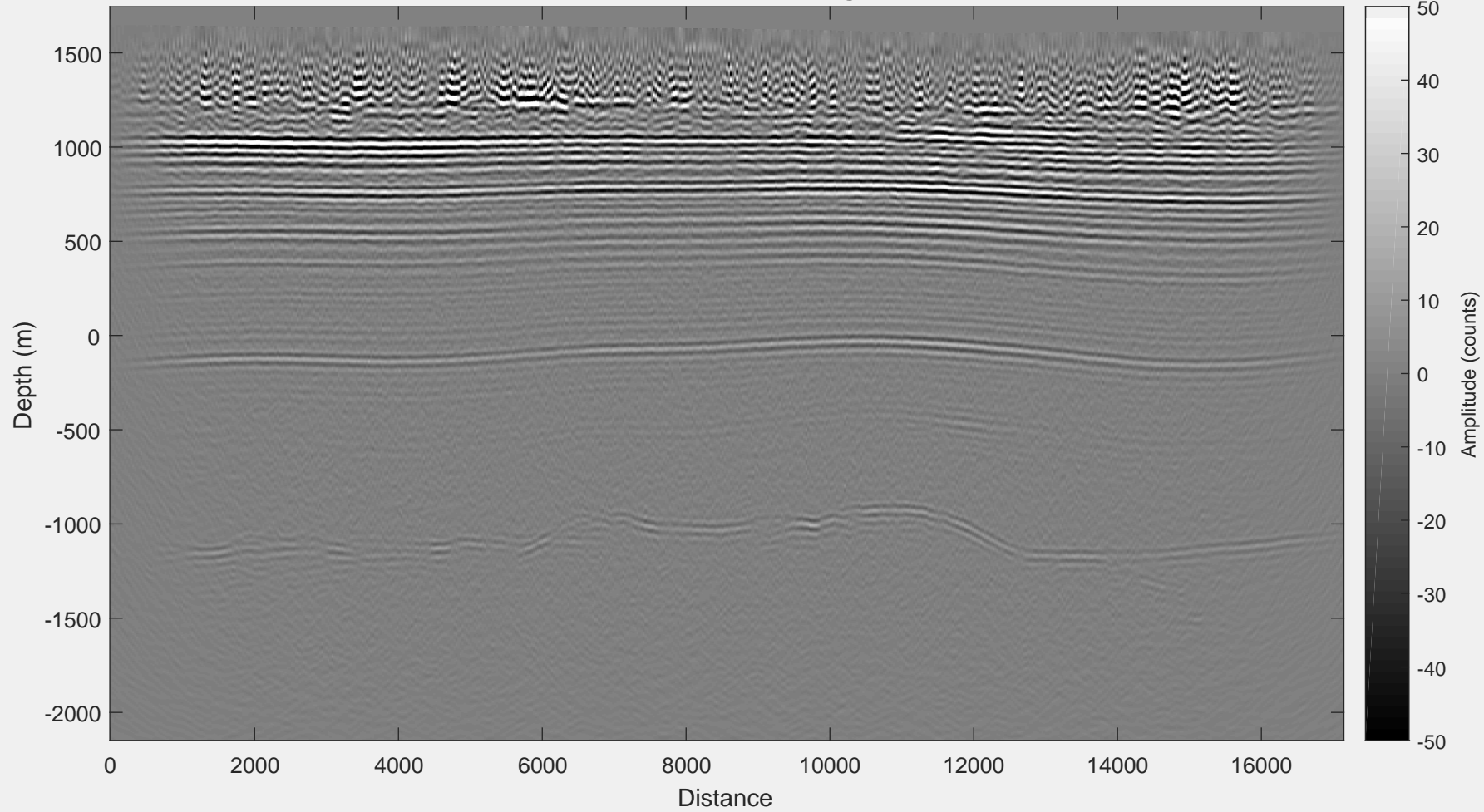
7 - UW_r1end1_rcamp_5mhz_mig.mat



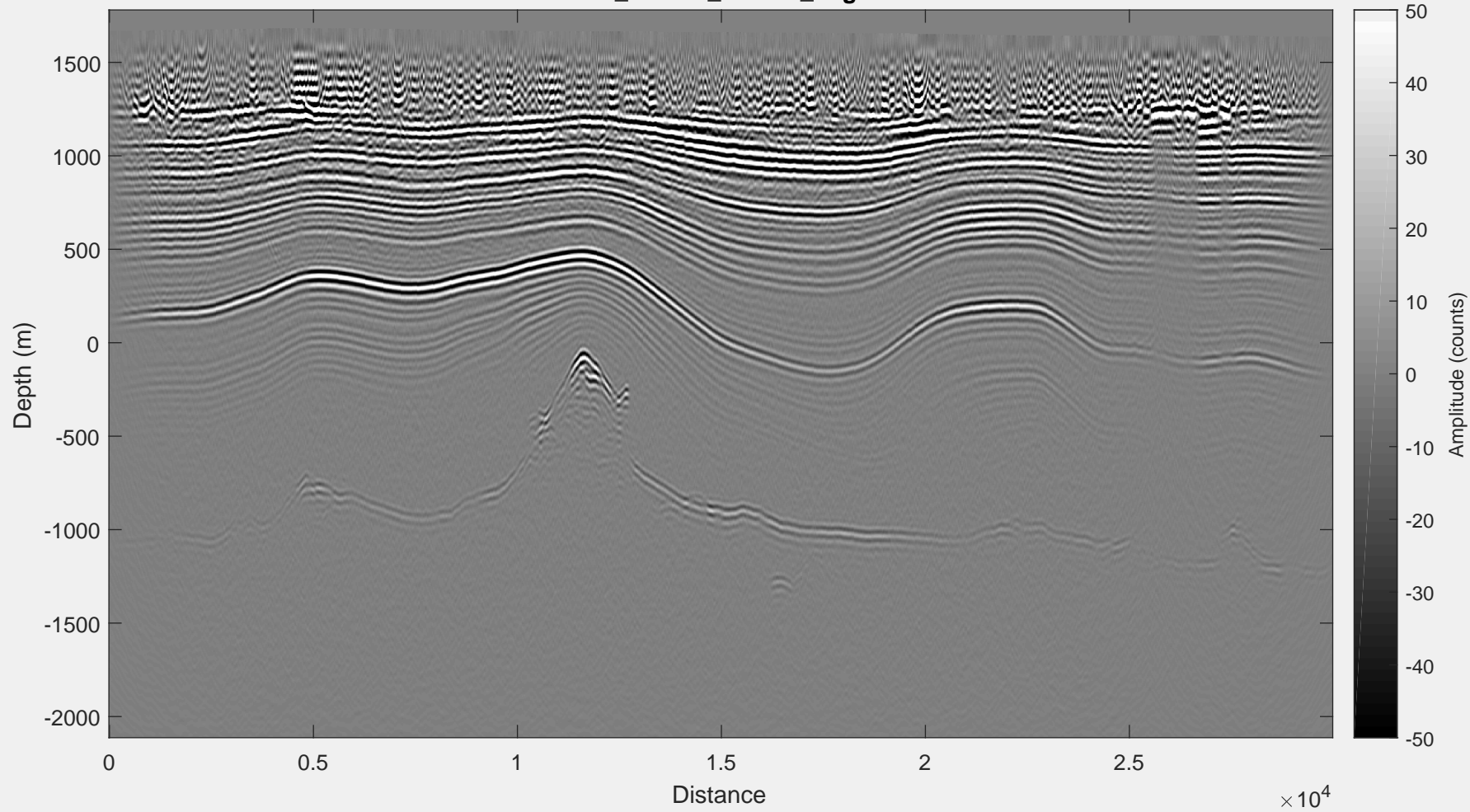
8 - UW_r1end1_rcamp_mig.mat



9 - UW_r2end1_r3end1_mig.mat



10 - UW_r2end2_r2end1_mig.mat



11 - UW_r3end2_r3end1_mig.mat

