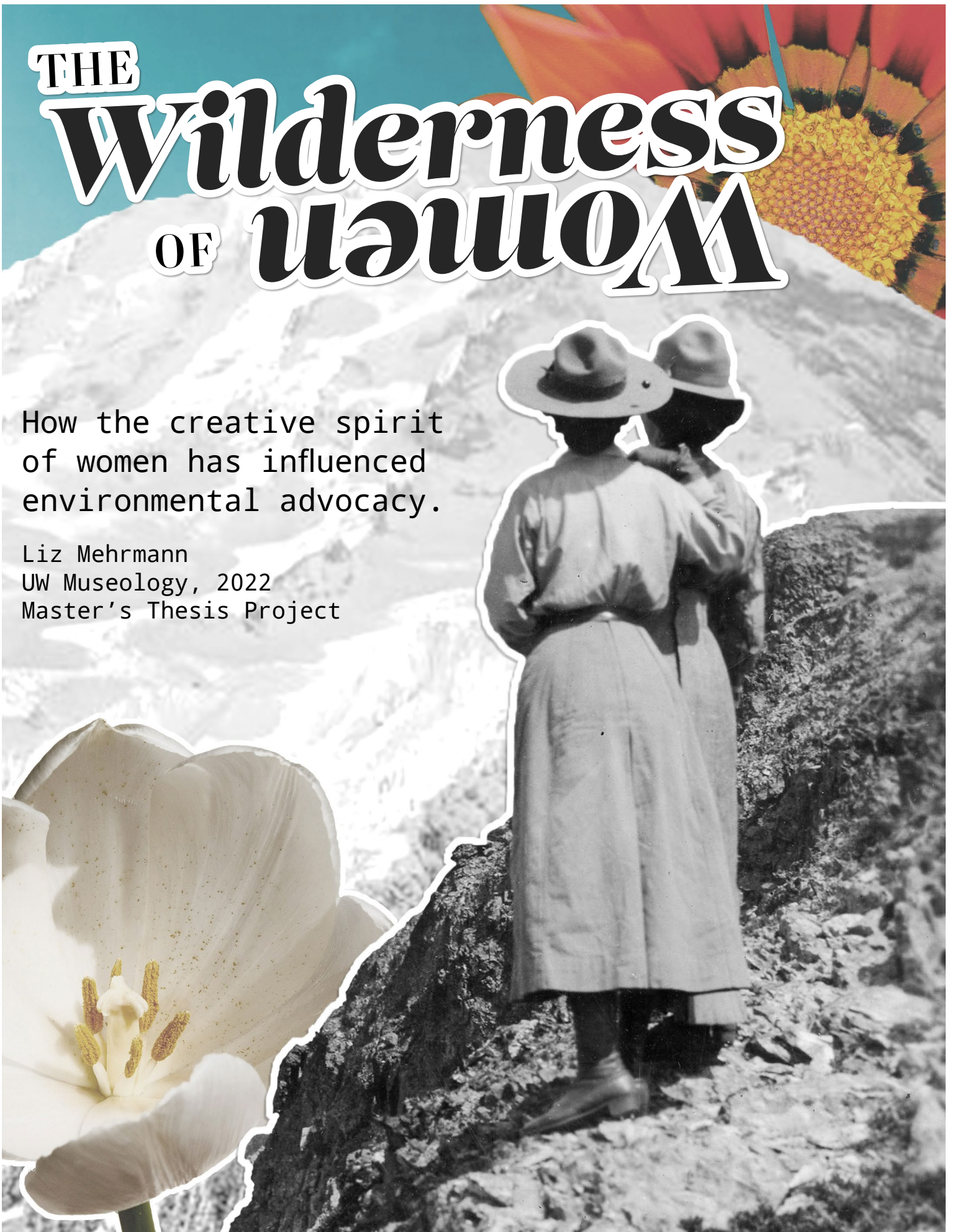


THE Wilderness OF WOMEN

How the creative spirit
of women has influenced
environmental advocacy.

Liz Mehrmann
UW Museology, 2022
Master's Thesis Project





COURTESY OF THE TACOMA PUBLIC LIBRARY

THE BIG IDEA:

The way we approach environmental advocacy today has been significantly shaped by women in the past century.

CURATOR'S STATEMENT:

Women are the unsung heroes of environmental issues, historically playing supportive roles that are given little credit or entirely overlooked. Their accomplishments are often credited to male leadership at the time. While women were often discouraged from taking on leadership roles, or simply not taken seriously, they showed no hesitation supporting causes they deemed important, such as protecting the environment. This exhibit will explore how women have influenced the environmental movement on a national, state, and local level to help protect the nation's wildlife and also shape the landscape of Tacoma we know today.

THEMATIC DISCUSSION

The roles women played in the production and transfer of knowledge in the first three quarters of the 20th century is often overlooked, despite the fact these women are responsible for preserving history and shaping the purpose of museums today (Levin, 2010). History often condenses long struggles into a single moment, acknowledging a few well-known leaders - who, most often, are men (Arntz, 2015). Because of this distillation of history, their accomplishments are seldom acknowledged. However, women have been the driving force for environmental health and conservation; often playing supporting roles, organizing community efforts, and influencing the male leaders who would eventually take credit for these efforts.

Why do we consider the great outdoors to be a place for men? When we consider the wilderness, the entrenchment of normative masculinity imposes itself upon advocacy and recreational settings: the rugged outdoorsmen, explorers, and the free solo climbers of the world (who will eventually each get their own award-winning documentary). Mountains, rivers, and forests in their materiality are not constructed by social discourse, but the categories and boundaries applied to those settings certainly are. As late as the 18th century, to be a wilderness was to be "deserted," "savage," "desolate," "barren"—in short, a "waste," the word's nearest synonym. As white settlers ventured West, and these spaces began to fill in, a serious cultural shift began to take place. The wilderness became congruent with rugged individualism, the frontier; something to be romanticized, and a

critical icon of American life. Theodore Roosevelt wrote about the “fine, manly qualities” of the “wild rough-rider of the plains.” A place where a man could be a man, and escape the creature comforts of civilized life. This outlook feminized the concept of civilized life, despite the fact these places were engineered by masculine leadership. And, like most conquests, the wilderness held little value to masculine leadership until it was almost gone.

The removal of Indigenous Peoples to create an “uninhabited wilderness”—uninhabited as never before in the human history of the place—reminds us just how invented, just how constructed, the American wilderness really is (Cronon, 1995). While the purpose of this exhibit is not to demonize men, or even proclaim pioneer women entirely innocent, it should be noted that white settlements and the growth of industry were entirely dominated by male leadership. This growth never took into account the impact on indigenous communities or the health of the landscape it was quickly destroying.

Pioneer women had created an alternative view that accepted and respected the human history of the landscape - refusing to draw a line between the human and the natural - and saw nature as a home (Sackman, 2015). While the Wilderness Act of 1964 portrayed wilderness as uninhabited by people, “the act also gave voice to the feminine and domestic sublimines by calling such places communities of life.” The passing of this act was greatly influenced by language of female environmentalists Polly Dyer, who would go on request pay after years of volunteering.

Women have often been catalysts for change, though seldom with the brazen pioneering mindset of men. Rather, they have considered environmental health and how it directly impacts future generations. This nurturing mindset has tremendously influenced our approach to environmental advocacy, historically and even now. Women have proven time and time again that there is nothing weak about tending to the needs of their communities, making them a natural fit for conservation, activism, and protecting nature in every regard.

Representation, and its lack, is a topic that frequently arises when discussing the homogeneity of outdoor settings. Recent research in wilderness recreation and advocacy has demonstrated an overrepresentation of white, middle class men in environmental media, especially where it engages with wilderness discourse (Chan & Curnow, 2017; Deluca & Demo, 2001; Finney, 2014; McNeil, Harris, & Fondren, 2012). Normalizing female representation in fields and institutions that have historically been gendered, such as conservation, reinforces the value of a woman’s right to create, innovate, and make change. Fostering representation in collections is important to

the mission and relevance of museums, reflecting the communities who have championed these measures.

Given the current political climate and how it continues to undermine women's voices – for example, the overturning of *Roe vs. Wade* by a Supreme Court of primarily white, male Justices (Gerstein, Ward, 2022) – it seems more important than ever to create equitable spaces for underrepresented voices. We draw strength and inspiration from those who came before us – and those remarkable women working among us today. They are part of our story, and a truly balanced and inclusive history recognizes how important women have always been in American society (NWAH). This exhibit will highlight women in conservation, and also the community-centered mindset with which they approached those measures.

CONCLUSION:

This exhibit seeks to further the Tacoma Historical Society's mission to preserve, present, and promote Tacoma's history by highlighting these underrepresented narratives. The topic of environmentalism is also very relevant in 2022 as topics such as climate change, environmental justice, and Washington's recent heatwaves. Shedding light on these topics from a historical perspective will connect the past to the present, and hopefully inspire audiences to explore these topics further.

Citations:

Arntz, D. (2015). *Extraordinary women conservationists of Washington: Mothers of nature*. The History Press.

Carpenter, Benjamin (2019). *Gendered Wilderness: Gendered Language in Wilderness Discourse*.

Chan, Jody, and Joe Churnow. (2017). "Taking Up Space: Men, Masculinity, and the Student Climate Movement." in Sherilyn MacGregor and Nicole Seymour (eds) "Men and Nature: Hegemonic Masculinities and Environmental Change." *RCC Perspectives: Transformations in Environment and Society* 4, pp. 77-85

Cronon, William. (1995). "The Trouble with Wilderness; or, Getting Back to the Wrong Nature", in *Uncommon Ground: Toward Reinventing Nature*, ed. William Cronon.

Gerstein, Josh. Ward, Alexander Ward. (2022, May 2). Supreme Court has voted to overturn abortion rights, draft opinion shows. *Politico*. Retrieved from: <https://www.politico.com/news/2022/05/02/supreme-court-abortion-draft-opinion-00029473>

Levin, A., & Routledge, publisher. (2010). *Gender, sexuality, and museums: A Routledge reader*. Milton Park, Abingdon, Oxon ; New York, NY: Routledge.

McCarthy, Joe. (2020, March 5). Understanding Why Climate Change Impacts Women More Than Men. *Global Citizen*. Retrieved from: <https://www.globalcitizen.org/en/content/how-climate-change-affects-women/>

Middlehurst, Molly. (2021, May 5). CLIMATE JUSTICE AND GENDER JUSTICE: AN ESSENTIAL PAIRING TO GET RESILIENCE RIGHT. *National Democratic Institute*. Retrieved from: <https://www.ndi.org/our-stories/climate-justice-and-gender-justice-essential-pairing-get-resilience-right>

Unkown Author. Unknown Date. Why Women's History? *National Women's History Alliance*. Retrieved from: <https://nationalwomenshistoryalliance.org/why-womens-history/>

Spearman, J., & Harrison, Louis. (2010). *Real role models successful African Americans beyond pop culture* (1st ed.). Austin: University of Texas Press.

INTRODUCTION

We have often lamented...that the history of the accomplishments of women does not survive past the memories of those who lived them.

LEAGUE OF WOMEN VOTERS

In Washington, over four million acres of wilderness have been preserved with the leadership and concerted efforts of women as well as men, often with women in the forefront and in the largest numbers (Arntz, 2015).

At the turn of the century, women outnumbered men as members of The Mountaineers, hiking club. Dr. Cora Eaton Smith, a founding member of the Tacoma Mountaineers Club, would go on to plant a 'Votes for Women' flag atop Mt. Rainier.

Concern for environmental health, and how it impacts future generations, has influenced entire movements. The work of Rachel Carson, who researched the impact of pesticides on environmental and human health, experienced a huge backlash from male scientists. Her findings, though, would go on to help Tacoma citizens combat the "Aroma of Tacoma".

Without equal rights, women have often had to get creative in order to get things done – even with Washington state's early acceptance of women's suffrage in 1910. Women's approaches often involved community engagement, collaboration, and finding power in numbers. Rosalie Edge, who would go on to help save the Olympic and Cascade National Parks, often used community advocacy to accomplish wildlife preservation.

Women in political leadership roles are more likely to center environmental justice, sustainability, and conservation issues. Ramona Bennett, a fierce and accomplished activist of the Puyallup tribe, even faced threats of assassination for her participation in the tribal fishing wars.

Many of these women have influenced how we approach environmental advocacy today. Let's take a closer look at how environmental issues began, how it impacts our communities, and learn about a few (of many) notable and inspiring women who have made a difference.

LAND ACKNOWLEDGEMENT:

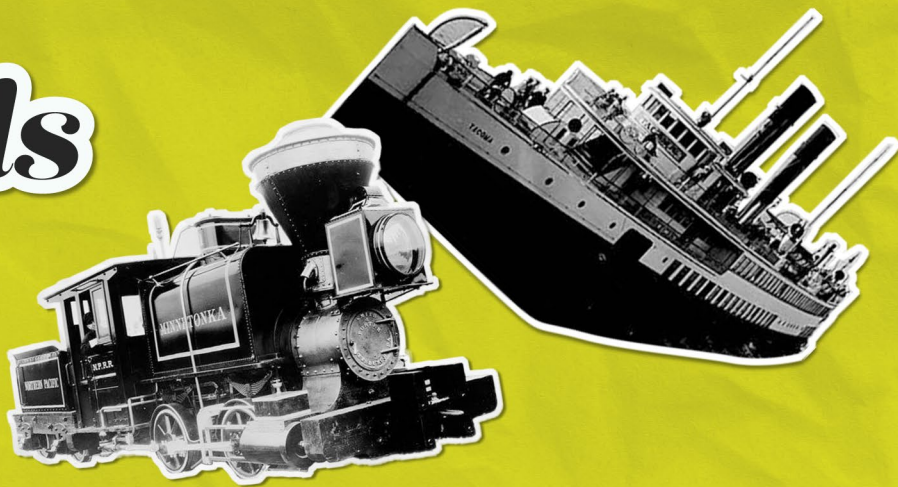
We acknowledge that we are on the traditional homelands of the Puyallup Tribe. The Puyallup people have lived on and stewarded these lands since the beginning of time, and continue to do so today. We recognize that this land acknowledgement is one small step toward true allyship and we commit to uplifting the voices, experiences, and histories of the Indigenous people of this land and beyond (Puyallup Tribe, n.d.).

CITATIONS:

Arntz, D. (2015). *Extraordinary women conservationists of Washington: Mothers of nature*. The History Press.

Puyallup Tribe. Date Unknown. Land Acknowledgement. Retrieved from: <http://puyallup-tribe.com/ourtribe/Land%20Acknowledgement.php>

From Rails to Sails



Part 1: The Impact of Settlers

Tacoma was nicknamed the “City of Destiny” after being chosen to be the western terminus of the Northern Pacific Railroad. The decision was influenced by Tacoma’s Deepwater harbor, Commencement Bay, which opened up the opportunity of international trade. Tacoma’s motto became, “When rails meet sails”. Let’s take a quick look at Tacoma’s industry and growth, and identify a few consequences of this unmonitored expansion.

1853: The first cargo of lumber is shipped from Tacoma to San Francisco, the beginning of its long-standing reputation as a shipping center.

July 2, 1864: President Abraham Lincoln signs a bill chartering the Northern Pacific Railroad Company, providing a grant of 40 million acres of the public domain - the greatest real estate give-away in American history - as incentive for the company to lay rails from Lake Superior to Puget Sound.

1870: Construction begins on the Northern Pacific Railway, which would eventually extend from Minnesota to Washington. The railway would connect the Great Lakes to the Puget Sound, opening vast new lands for farming, ranching, lumbering and mining, and linking the Pacific Northwest to the rest of the country.

July 14, 1873: Tacoma, WA is selected as the road’s western terminus. The deep waters of Commencement Bay could dock more than 50 ships at a time, and allow vessels of any size. The miles of tideland waterfront would also allow for expanded port facilities.

December 16, 1873: The first steam train arrives in Tacoma.

1877: Northern Pacific Railroad branches southeast, from Tacoma, to Puyallup, and to the coal fields of Wilkeson. This coal would be destined for export through Tacoma to San Francisco, CA, where it would be thrown into the fireboxes of Central Pacific Railroad steam engines. As the railroad continues to expand, immigrants, families, and single men move to the Pacific Northwest.

June 17, 1884: Northern Pacific runs first train from Tacoma to Seattle

1889: Thea Foss starts the Foss Maritime Company. She would later expand the company with rowboats, naphtha launches, and steam tugs.

1893: Tacoma establishes public utilities due to the boom in population.

1905: ASARCO (American Smelting and Refining), purchases the Tacoma smelter from the Bunker Hill Mining Company.

April 6, 1917: The United States enters World War 1. The war proves to be a great economic boom for Washington farmers, loggers, and food packers. Washington forests would supply wood for ships, Army camps, and airplanes.

1917: Pierce County citizens approve a bond measure of \$2,000,000 to purchase 70-acres of prairieland, to be donated to the Federal Government for use as a military reservation. This land would become Fort Lewis. A portion of this land is taken from the Nisqually reservation.

1927: Pierce County citizens approve another bond measure to establish an air field, located just north of Fort Lewis, which would become Tacoma Field.

1939: The Washington legislature authorizes state ports to engage in industrial development projects.

1940: The Port of Tacoma established the Industrial Development District. Companies like Kaiser Aluminum, Ohio Ferro Alloys, and Philadelphia Quartz then moved to the Port of Tacoma.

1947: With the creation of the Air Force, McChord Field becomes independent of Fort Lewis, and is renamed McChord Air Force Base. The field has grown 3,000 acres since its origin.

1953: The Blair Bridge is constructed to improve the flow of cars and ships in the Tideflats.

1960s: The Blair and Hylebos waterways are expanded, creating new land with dredged materials that was dedicated to warehousing and manufacturing.

1966: The McChord Pipeline is built. It is a 14.25-mile long pipeline that originates in the U.S. Oil & Refining Co. refinery, located in the Tacoma Tide Flats, that transports kerosene-based jet fuel to McChord Airforce Base.

1983: Port of Tacoma receives Foreign Trade Zone Designation.

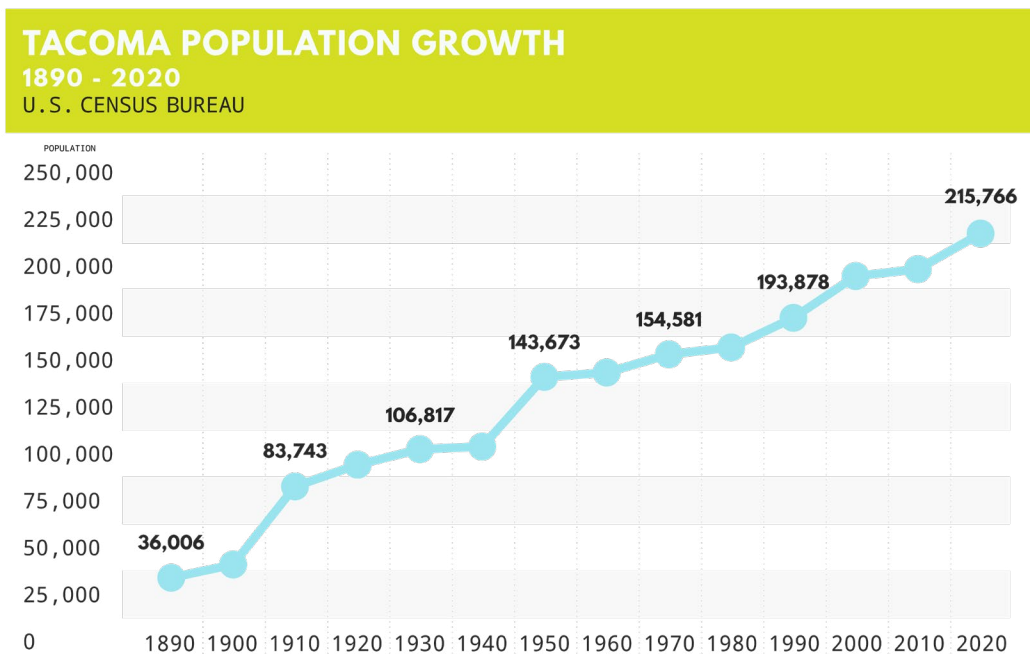
2015: The Port of Seattle and Port of Tacoma jointly form the Northwest Seaport Alliance, creating the third-largest cargo gateway in the United States.

THE IMPACTS

While this growth supported Tacoma's economy and created jobs, it also had dire consequences on the environment. Let's look at a few of the impacts this growth caused, to better understand why environmental advocacy is necessary.

Seattle! Seattle! Death Rattle, Death Rattle; Tacoma! Tacoma! Aroma! Aroma!

TACOMA RESIDENT GEORGE FRANCIS TRAIN, 1901



Population growth, which Tacoma has seen much of, directly leads to greater environmental impacts. More people produce more CO2 emissions, create more waste, and also require more infrastructure for ease of transportation.

CLIMATE DATA FOR TACOMA, WASHINGTON
 1981 - 2010 NORMALS, EXTREMES 1932 - PRESENT)
 NOAA, THE WEATHER CHANNEL, AND WEATHER ATLAS

Month	Jan	Feb	Mar	Apr	May	Jun	Jul	Aug	Sep	Oct	Nov	Dec	Year
Record High	66	68	77	83	92	105	99	96	89	82	70	68	105
Average High	48.4	50.9	55.5	60.4	66.4	71.5	77	77	71.3	61.3	52.6	46.9	61.6
Daily Mean	42.8	43.9	47.7	51.8	57.3	62	66.6	66.4	61.5	53.7	46.5	41.4	53.5
Average Low	37.1	36.9	39.8	43.2	48.2	52.6	56.1	55.7	51.6	46	40.4	35.8	45.3
Record Low	17	11	15	29	34	37	46	41	34	26	5	6	5

Recent Climate Data shows Tacoma is experiencing more extreme temperatures.

THE AROMA OF TACOMA OR THE CITY’S “MUNICIPAL HALITOSIS”

The Tacoma Aroma is caused by some 100 years of industrial development around the tide flats of Commencement Bay. And the smell itself is a mix of natural decay, hydrogen sulfide, the vapors of animal rendering, and assorted industrial fumes.

Journalist and author Timothy Egan called it “one of the longest standing nicknames in the Pacific Northwest”, using it as an example of the many consequences of environmental destruction along Puget Sound.

FODOR

A blend of fog and odor: a term coined for Tacoma, by Tacoma.

AIR POLLUTION

Air pollution has become increasingly linked to health problems such as skin rashes, asthma and other respiratory problems, and even infant deaths.

CONTAMINATED WATERWAYS

Industries dumped waste into the waterway, and sewers emptied right into the bay. People viewed the ocean as a kind of washing machine; they believed the tides carried the waste away. While we now know that isn’t true, the

pollutants bonded with the sediments and settled into the waterways. This historical practice led to the accumulation of more than 1 million cubic yards of contaminated sediments.

- Cattle and horses raised on the tideflats were often poisoned by fluoride emissions from the aluminum smelter.
- Phthalates: A chemical used to make plastic, mostly PVC products. Also used in detergents and solvents.
- Petroleum-Based Products: Formed during the incomplete burning of coal, oil, gas and other organic substances.
- Polychlorinated Biphenyls: Non-flammable, man-made chemicals used as coolants and lubricants in electrical equipment such as transformers and capacitors.
- Phenols: Coal tar was the only source of phenol during World War I. The synthetic form is used in the plywood adhesive, construction, automotive and appliance industries.
- Metals: Arsenic, copper, lead, mercury and zinc.
- Pesticides: Includes dichlorodiphenyltrichloroethane (DDT), dichlorodiphenyldichloroethane (DDD) and dichlorodiphenyldichloroethylene (DDE).

FISH AND WILDLIFE

Degradation of Tacoma's waterways, wetlands, and dam construction has had a negative impact on Washington's wild salmon population. Salmon has since been listed as an endangered species, and the state of Washington has put in place salmon recovery measures.

MARINE MAMMALS

Climate change and pollution has also had a negative impact on marine ecology and the animals that live in it.

MIGRATORY BIRDS

Climate change also impacts the sea level - as the sea rises, it overflows freshwater marshes, where migratory birds nest.

CITATIONS:

- Burnett, John. (2010, Feb 4). A Toxic Century: Mining Giant Must Clean Up Mess. National Public Radio. Retrieved from: <https://www.npr.org/2010/02/04/122779177/a-toxic-century-mining-giant-must-clean-up-mess>
- Egan, Timothy. (April 6, 1988). Tacoma Journal; On Good Days, the Smell Can Hardly be Noticed. New York Times.
- Lange, Greg. (2000, Jan 1). Northern Pacific runs first train from Tacoma to Seattle on June 17, 1884. HistoryLink. Retrieved from: <https://www.historylink.org/File/2304>
- Morgan, Murray. 1979. Puget's Sound: a narrative of early Tacoma and the Southern Sound. Pg 139.
- Unkown Author. (1999, Jan 14). SIMPSON MILL: Aroma of Tacoma is almost history. Kitsap Sun. Retrieved from: https://products.kitsapsun.com/archive/1999/01-14/0043_simpson_mill__aroma_of_tacoma_is_.html
- Unkown Author. N.D. The United States Coastguard. Wikipedia. Retrieved from: https://en.wikipedia.org/wiki/United_States_Coast_Guard
- Unknown Author. N.D. The United States Environmental Protection Agency. Wikipedia. Retrieved from: https://en.wikipedia.org/wiki/United_States_Environmental_Protection_Agency
- Unknown Author. N.D. The McChord Pipeline. The McChord Pipeline Co. Retrieved from: <http://mcchordpipeline.com/>
- Unknown Author. N.D. Port of Tacoma. World Port Source. Retrieved from: http://www.worldportsource.com/ports/review/USA_WA_Port_of_Tacoma_190.php#:~:text=During%20World%20War%20II%2C%20the,employed%20there%20at%20its%20peak.
- Unknown Author. N.D. Thea Foss Waterway Cleanup. City of Tacoma Washington. Retrieved from: https://www.cityoftacoma.org/government/city_departments/environmentalservices/surface_water/restoration_and_monitoring/thea_foss_waterway_cleanup
- Unknown Author. N.D. Northern Pacific Railway Company: An Inventory of Its Corporate Records at the Minnesota State Historical Society. Northern Pacific Railway Corporate Records. Minnesota Historical Society. Retrieved from: <http://www2.mnhs.org/library/findaids/01010.xml>
- Unknown Author. N.D. The Mainstreet of the Northwest on the World Wide Web. Retrieved from: <https://web.archive.org/web/20070927004622/http://pw2.netcom.com/~whstlpnk/np.html>

Part 2: Outdoor Enthusiasts | Artists, Poets, and Recreation

When we think of the pioneer women, we don't often associate them with the great outdoors. However, when white settlers arrived in the Pacific Northwest, women were also enthralled with the beauty of the mountains and forests, inspired to create art, write poetry, and even participate in outdoor recreation.

The awful majesty of the mountain enshrouded them, the icy air bristled with unknown perils.

GERTRUDE METCALF, A NIGHT ON MT. ST. HELENS, AUGUST 1908

FAY FULLER (1869 - 1958)

On August 10th, 1890 Fay Fuller became the first recorded woman to climb Mt. Rainier. She and her four colleagues faced difficult climbing conditions, but Fuller refused assistance, and was quoted as saying if she could not achieve the goal without help she would not deserve to reach it. Fuller went on to become a founding member of the Washington Alpine Club, the Tacoma Alpine Club, and the Mazamas Mountaineering Club in Portland. She also worked as a city reporter for the Tacoma Ledger, and wrote a recurring column entitled "Mountain Murmurs". Fay Peak in Mt. Rainier National Park is named after her.

WOW_OE01



THE MOUNTAINEERS

The Mountaineers is a Washington-based organization that has had a major impact on outdoor recreation and wilderness preservation in the state. Founded in 1906, more than half of the members were female. Although women would not get the right to vote in the United States until 1920, they played a prominent role in the organization. Women helped organize events and shape club policy, and they held their own in the mountains, regularly being among those claiming first ascents in the Cascades and Olympics.

DR. CORA SMITH EATON KING (1867 - 1939)

Dr. Cora Smith Eaton King was a physician, suffragist, and activist. She was also a founding member and the first secretary of the Mountaineers. An experienced climber, she was the first woman to summit the East Peak of Mount Olympus in 1907, and went on to climb Washington's six highest peaks. In 1909, she hoisted a 'Votes for Women' pennant atop Mt Rainier. Washington women would earn the right to vote just 1 year later.

WOW_OE02



WOW_OE03



WINONA BAILEY (1827 - 1938)

In 1907 she fell 75 feet near Dodwell-Rixon Pass on a climb to Mount Olympus during a Mountaineers camping trip at the Elwha River. She had to be carried half a mile to an improvised hospital that was 10 miles from the main camp, and did not make the 60-mile trip back out of the mountains for two weeks. She received only minor injuries, and continued climbing throughout her life. Undeterred, Bailey soon returned to climbing. In 1916 she was elected one of the club's trustees. In 1920, then a Latin teacher at Queen Anne High School, she was one of the first two Mountaineers honored for reaching the top of Washington's six highest mountains.

WOW_OE04



WOW_OE05



ALMA WAGEN (1878 - 1967)

Alma Wagen worked at Stadium High School as a mathematics teacher, and also climbed extensively in the North Cascades Mountains and Olympic Mountains.

The girls wore skirts until they got to the city limits, then they changed into pants.

FLORENCE DODGE, TACOMANS REMEMBER. THE MOUNTAINEERS ANNUAL, 1983

BERNICE NEWELL

Bernice Newell was a Point Defiance Park supporter and local newspaper reporter in the early 1900s. Mrs. Newell wrote an article published in the Tacoma Daily Ledger at the time of President Theodore Roosevelt's visit to

Tacoma on May 23, 1903, in which she proposed to kidnap the President and take him on the streetcar to Point Defiance. Once there, she described in rich detail the wonders that could be seen in the Park that Tacoma had been improving since 1888.

Mr. President, don't you think it would be only fair if Uncle Sam would fix it so Tacoma could have Point Defiance Park for her very own and never have to think of the possibility of its being taken away from her?...It is all the resort of the great army of busy people have, and if Uncle Sam could see how they use it, he would never rest until he had provided that it could never be taken away. Don't you think so?

Bernice Newell also published the first bound book in Tacoma, a book of poetry entitled "The Mountain".



ABBY WILLIAMS HILL (1861 - 1943)

I was cut out for the wilds...I should like to wear cloth like men do, made simply and out of styles that change but little. I should like to wear it until it is worn out and that is considered mannish.

Abby Williams Hill was a painter, social activist, and prolific writer with an insatiable love of travel and learning. She was hired by the Great Northern Railway and the Northern Pacific Railway to create landscapes of the northwest to promote tourism, in the style of en plein air (painting outdoors). Later in life, Hill was concerned with the threat that commercial and tourist interests posed to the natural environment. She noted that several of the landscapes that she had painted earlier in her career no longer existed in the state in which she had observed them. In response she embarked on a series of paintings of the western National Parks, which she considered her legacy to future generations. She was also an advocate for children's rights, and founded the Washington state Parent-Teacher Association. In her work for congress, she advocated on behalf of

immigrant and disadvantaged families.

WOW_OE12



WOW_OE11



WOW_OE10



WOW_OE08



WOW_OE09



CITATIONS:

Arntz, D. (2015). *Extraordinary women conservationists of Washington: Mothers of nature*. The History Press.

Drosendahl, Glenn. (2018, April 20). *The Mountaineers*. HistoryLink. <https://www.historylink.org/file/20547>

Gerhon, Livia. (2019, Feb 21). *Rachel Carson's Critics Called Her a Witch*. JSTOR Daily. <https://daily.jstor.org/rachel-carsons-critics-called-her-a-witch>

Hamilton, Charles. (2006, May 29). *Fay Fuller becomes the first woman known to reach the summit of Mount Rainier on August 10, 1890*. HistoryLink. <https://historylink.org/File/7786>

Sullivan, Mary. (2014). *Tainted Earth: Smelters, Public Health, and the Environment*. Retrieved from: <https://books.google.com/>

Unknown Author. N.D. *Portrait of Winona Bailey, 1908*. Museum of History and Industry. Retrieved from: <https://digitalcollections.lib.washington.edu/digital/collection/imlsmohai/id/9294/rec/2>

Unknown Author. N.D. *Historic People*. Metro Parks Department, Tacoma. Retrieved from: <https://www.metroparkstacoma.org/about/history-of-metro-parks/historic-people/>

Unknown Author. N.D. *Abby Williams Hill Collection, 1890-1943*. Archives West. Retrieved from: <https://archiveswest.orbiscascade.org/ark:/80444/xv41784>

Unknown Author. N.D. *Celebrating Women Environmentalists During Women's History Month*. San Francisco Environment. Retrieved from: <https://sfenvironment.org/celebrating-women-environmentalists-during-womens-history-month>

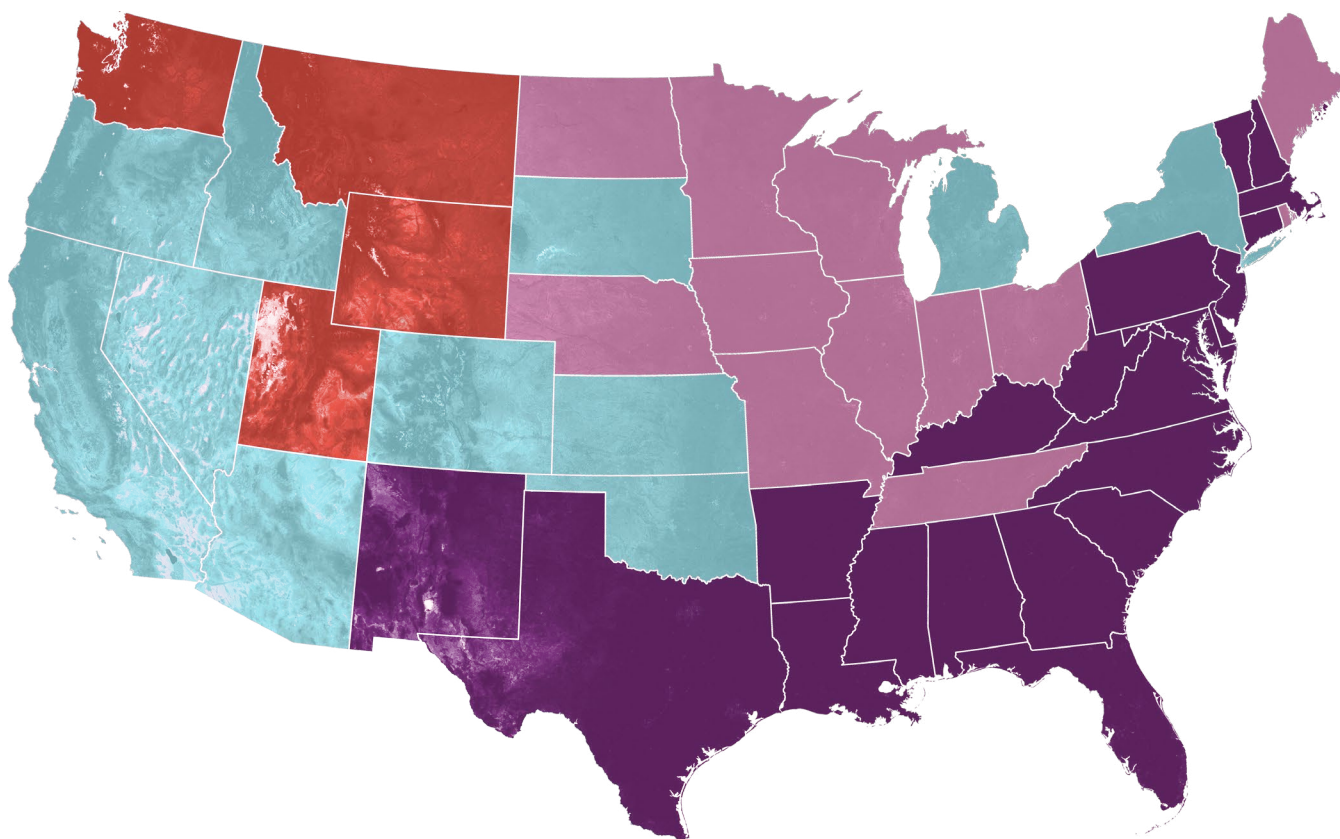
Unknown Author. N.D. *Herstory: Esther Stark Maltby*. Washington State Parks Foundation. Retrieved from: <https://waparks.org/celebrate-womens-history-esther-stark-maltby-2/>

Women's Suffrage in the U.S. by State

COMPILED BY THE CENTER FOR AMERICAN WOMEN AND POLITICS, AUGUST 2014

Contrary to popular opinion, the 19th Amendment did not give women the right to vote -it guaranteed women the right to vote.

By the time the 19th Amendment was ratified in 1920, women in many states and territories already had the right to vote.

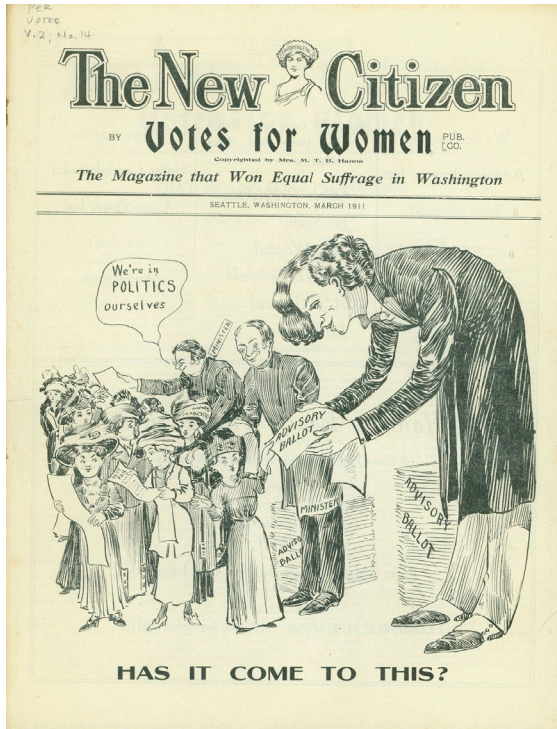


States in which women:

- Red** HAD FULL VOTING RIGHTS BEFORE THE 19TH AMENDMENT WAS PASSED, AND ALSO BEFORE STATEHOOD
- Teal** HAD FULL VOTING RIGHTS BEFORE THE 19TH AMENDMENT WAS PASSED (JAN. 1ST, 1919)
- Pink** COULD VOTE FOR PRESIDENT BEFORE THE 19TH AMENDMENT WAS PASSED (JAN. 1ST, 1919)
- Purple** GAINED VOTING RIGHTS WITH THE PASSAGE OF THE 19TH AMENDMENT (JAN. 1ST, 1919)

NATIONAL CONSTITUTION CENTER

These following territories provided full voting rights to women before statehood; all of them were considered Western territories »



Courtesy of The Washington State Historical Society.



1869
TERRITORY OF WYOMING



1870
TERRITORY OF UTAH



1883
TERRITORY OF WASHINGTON



1887
TERRITORY OF MONTANA



1913
TERRITORY OF ALASKA



I want to be remembered as the only woman who ever voted to give women the right to vote.

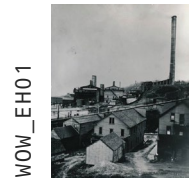
JEANNETTE RANKIN (JUNE 11, 1880 – MAY 18, 1973) was the first woman to hold federal office in the United States. She was elected in 1916, before the 19th Amendment was passed. As of 2022, she is the only woman elected to Congress from Montana.

Part 3: Environmental Health & Conservation

When white settlers started colonizing the United States, there was little consideration given to how population growth or industry would impact the environment and the communities they were creating. While industry created jobs, environmental impacts had become devastating to surrounding nature and communities.

JUDY ALSOS

Judy Alsos moved to Tacoma's Skyline neighborhood in 1955, downwind from the smelter factory. She noted that neighborhood children experienced coughs, trouble breathing, asthma exacerbations, and skin rashes. She began holding community meetings to address the issue of pollution, and soon began the grassroots Citizens Committee on Air Pollution, serving as the committee's president. In the summer of 1961 Alsos and the Citizens' Committee presented a petition with 1,150 signatures opposing the smelter's pollution to the Tacoma City Council and the Pierce County Commissioners. Alsos' efforts would eventually convince the state of Washington to tackle the issue of air pollution by ASARCO and its effects on the community.



RACHEL CARSON (1907 - 1964)

Rachel Carson was a marine biologist, author, and environmentalist. Her book, *Silent Spring*, describes the harmful effects of pesticides on the environment. It is often credited for launching the environmental movement. The evidence and reception of *Silent Spring* would go on to aid local movements such as Judy Alsos, and demand that the impact of pesticides on the environment and human health be addressed. Chemical companies sought to discredit Carson, and she was accused of being radical, disloyal, unscientific, and hysterically overly emphatic with a mystical attachment to the balance of nature. John F. Kennedy's Science Advisory Committee Report would go on to validate her findings, and make pesticides a major public issue.



POLLY DYER (1920 - 2016)

Polly Dyer met her husband John on a mountain, and they both became lifelong mountain climbers, conservationists, and helped organize the Pacific Northwest Chapter of the Sierra Club. However, it was the fight with timber industries to maintain the boundaries of Olympic National Park that brought Dyer to the forefront of conservation efforts. Polly Dyer went on to become president of the Olympic Park Associates, which would protect the park from further threats. Dyer also protested a coastal road being built on Olympic National Park property, and contributed to effective language in the Wilderness Act of 1964. She achieved most of this by volunteering, and when it was suggested Polly become the club's first Northwest Representative, prominent members of her own association suggested she didn't need to be paid since she was already handling all of the duties.



WOW_EH05



WOW_EH04

EMILY HAIG (1890 - 1978)

Born in California, Emily Haig became interested in conservation when she joined the Sierra Club in 1912. Working alongside John Muir, she became involved in stopping the proposed dam on the Hetch-Hetchy River. She hosted meetings for the Sierra Club in her San Francisco living room. She moved to Washington, becoming president of the Seattle Audubon Society and active in the Mountaineers, also writing articles for the Seattle Post Intelligence about birds and conservation. She was especially active in writing letters to elected officials about environmental matters.

With Dyer, the conservationist duo went on to combat 'salvage logging'. Although national parks were established to protect important habitats, the Park Service was allowed to cut timber "in order to control the attacks of insects or disease", and to protect the public from trees in danger of falling. It was quickly realized that this definition of salvage logging was being used as a cover to get as many big trees out of the park before anyone noticed. By banding several conservationist organizations together, Haig and Dyer ended salvage logging by 1958, but at least 100 million board feet had been taken from the Olympic Park and sent to lumber mills.



WOW_EH06

CITATIONS:

Arntz, D. (2015). *Extraordinary women conservationists of Washington: Mothers of nature*. The History Press.

Ressler, Sophia. (2022, Jan 24). Gov. Inslee Makes Three New Appointments to Washington Fish and Wildlife. Center for Biological Diversity. Retrieved from: <https://biologicaldiversity.org/w/news/press-releases/gov-inslee-makes-three-new-appointments-to-washington-fish-and-wildlife-commission-2022-01-24/>

Skow, John. (1998, Dec 14). Forests: Bonnie Phillips: Warrior on Wheels. Time Magazine. Retrieved from: <https://content.time.com/time/subscriber/article/0,33009,989842,00.html>

Sullivan, Mary. (2014). *Tainted Earth: Smelters, Public Health, and the Environment*. Retrieved from: <https://books.google.com/>

United States Environmental Protection Agency. Learn about Environmental Justice. <https://www.epa.gov/environmentaljustice/learn-about-environmental-justice>

Part 4: Community Advocates | Organizations & Clubs

Through courage and persistence, women have become citizen-activists and professionals; building communities to coalesce as a single, strong, flexible and egalitarian community. Women gained the right to vote in Washington in 1910, but their voices were not heard overnight. Rather, women listened to the needs of their communities and organized to achieve environmental goals.

The only honest, unselfish, indomitable hellcat in the history of conservation.

THE NEW YORKER, 1948

ROSALIE EDGE

Rosalie Edge was a New York socialite, suffragist, and amateur birdwatcher who was considered the United States' most militant conservationist.

In 1929, she established the Emergency Conservation Committee, which exposed and reformed the Audubon Society. Directors of the organization had been accepting donations from rifle and game associations, in exchange for hunting privileges. Edge sued the Audubon Society for their mailing list, and won. In a mailed pamphlet, she revealed these details to Audubon members: the former directors, and alliance with game harvesters, were history.

She asserted that it was every person's civic duty to protect nature. Edge led the national grassroots campaigns to create Olympic and Kings Canyon National Parks, and successfully lobbied Congress to purchase 8,000 acres of old-growth sugar pines on the perimeter of Yosemite National Park that were to be logged.

WOW_CA02



EVA STEWART

Eva Stewart has the distinction of being the first woman on the park board and one of its most colorful figures. She started her career with the park district in 1927 when she was hired as a playground supervisor.

Eva Stewart spent over 15 years of active involvement with Tacoma PTA before she was appointed to fill a vacant seat on the park board in 1951. She

spent almost 25 years on the park board, resigning in 1975. During her time in office she served as president of the park board on 6 occasions.

A newspaper tribute at the time of her retirement in 1975 stated that “During her tenure, Tacoma’s parks were expanded, cleaned up and improved, with her as a constant driving force for progress”.

WOW_CA01



ESTHER STARK MALTBY

Esther Stark Maltby was the 16th president of Washington State Federation of Women’s Clubs (WSFWC, now named General Federation of Women’s Clubs). The WSFWC was incorporated in 1910 as a voluntary association for women to learn and improve their lives, lead charitable work and engage in civic campaigns for the public good. During her leadership, she helped raise \$25,000 to purchase and protect 62.89 acres of forestlands with a “selection of giant firs, cedars, and hemlocks” to donate as a state park. Ultimately, new parcels were protected and donated to become Federation Forest State Park.

WOW_CA03



What motivated women to crusade? Courage? Brashness? Naivete? Our women environmental leaders based their stand on serious study of the issues, characterized by enthusiasm, optimism, and perseverance. Plus that firm conviction of the rightness of saving the living world.

HELEN INGLE (1926 - 2019)

Helen Engle was born in Tacoma, WA and studied nursing during WWII at the University of Puget Sound. She joined the Mountaineers in the 1950s, along with her husband Stan, and observed how the land around her was becoming lost to logging and pollution. Along with friend Thelma Gilmur, the two founded the Tahoma Audubon Society, the Washington Environmental Council, Tacoma Nature Center, and China Lake Park. Helen Engle also co-founded the

Washington Wilderness Coalition, Washington Environmental Political Action Committee, Mount Rainier National Park Associates, The Arboretum Foundation of Pierce-Kitsap Counties, Nisqually Basin Land Trust, Citizens for a Healthy Bay in Tacoma, People for Puget Sound and National Parks Fund, along with wildlife refuges.

With her admirable networking skills, Engle also organized a sit-in at the office of Congressman Norm Dicks over salvage logging, quickly convincing him to change his stance on the matter.

She also helped pass the Shoreline Act of 1972, which requires local governments to prepare locally-tailored policies and regulations for managing shoreline use in their jurisdictions. This act, along with the organizations she helped establish, are still active today and help protect Tacoma's natural landscape.



JOAN THOMAS (1931 - 2011)

Joan Thomas joined the League of Women Voters in 1958, became president of the Seattle chapter, and served on the organization's state board. She was the youngest president of the Washington League. Joan went on to become one of the original incorporators of the Washington Environmental Council (WEC) in 1968, and helped shepherd one of the nation's toughest oil-spill bills through the legislature. She helped pass the Water Resources Act of 1971, which revolutionized water policies in Washington regarding fish and wildlife. Joan became the first woman to serve as regional manager of the Department of Ecology, where she created a successful program to develop urban action teams for pollution control. In 1997, she was appointed to the Washington State Parks Commission. A founding member of both the Washington Environmental Council and Washington Wildlife and Recreation Coalition, Joan worked tirelessly to preserve natural resources for generations to come.

HAZEL WOLF (1898 - 2011)

Hazel Wolf helped found twenty of the twenty-six Audubon chapters in Washington State, and one in British Columbia. She also served as secretary of the Olympic Park Associates and the North Cascades Conservation Council; as president of the Federation of Western Outdoor Clubs in 1977, and as editor of the organization's newsletter, Outdoor West. In 1978, Hazel led a major campaign to unite Northwest Native American tribes and

environmentalists in their common concerns. Since then, environmental organizations and Native American tribes have collaborated on a number of issues, including forest preservation, nuclear waste cleanup at Hanford, and protection of the Columbia River. Hazel also worked with Seattle residents to set up the Coalition for Community Justice to tackle environmental justice issues that disproportionately affect those in poverty.

There aren't enough women environmentalists. Women can fight without making it personal. Work with the opposition when we can, and sue them when we have to.

BONNIE PHILLIPS (1919 - 2007)

Bonnie Phillips was a recipient of the Hero of the Planet Award in 1998, and was a fierce forest activist in Washington State. Until the mid-1970s, old-growth forests were considered “biological deserts” by most foresters because they contained few game species. However, many scientists, conservationists, birders and hikers saw ancient forest as a rich and diverse ecosystem. The 1976 National Forest Management Act (NFMA) declared that all parts of an ecosystem - birds, plants, insects, human beings, and so on - are intertwined and valuable to its functioning. Working as a volunteer with the Audubon Society, Phillips was tasked with helping map old-growth forests, a primary habitat for the northern spotted owl. Bonnie even worked with the US Forest Service (who is responsible for issuing timber permits) in these mapping efforts. Her efforts helped preserve old-growth forests, and preserve habitats for endangered species such as the northern spotted owl and marbled murrelet. Bonnie Phillips achieved all of these community efforts as an unpaid volunteer.

MELANIE ROWLAND

Melanie Rowland was an attorney at the National Oceanic and Atmospheric Administration's office of general counsel for more than 15 years. Her work focused on the Endangered Species Act as well as issues surrounding climate change. During this time, she represented the Audubon Society in protecting a newly listed endangered species, the spotted owl, from timber industry. She was appointed to Washington Fish and Wildlife Commission in 2022.

Part 5: Environmental Justice

Environmental justice is the fair treatment and meaningful involvement of all people regardless of race, color, national origin, or income with respect to the development, implementation and enforcement of environmental laws, regulations and policies.

Fair treatment means no group of people should bear a disproportionate share of the negative environmental consequences resulting from industrial, governmental and commercial operations or policies.

THE FISH WARS

The 1854 Treaty of Medicine Creek allowed the United States to purchase land from the Nisqually, Puyallup, and Squaxin Island nations of the Puget Sound area in western Washington for pennies on the dollar. However, it also stated these nations could continue to hunt and fish in their “usual and accustomed grounds and stations.” Smithsonian Mag These nations would go on to secure those rights in court, often at odds with newly established conservation agencies at the time.

RAMONA BENNETT (1938 - PRESENT)

Ramona Bennett is a longtime and prominent leader from the Puyallup tribe. A pioneering activist on behalf of Indian fishing rights, she co-founded the Survival of American Indians Association in 1964, an organization that helped bring local “fish-ins” to national prominence.

The fish-in was in protest of the three-day-a-week fishing season imposed by Washington state on Native fishers. Native activists and their supporters asserted that under the 1855 treaties with the U.S. government, they could fish off-reservation without restriction. Soon afterwards, Nixon’s Justice Department sued the State of Washington on behalf of tribes seeking to remove the state’s restriction. The lawsuit eventually resulted in the 1974 Boldt Decision, granting tribes 50 percent of the salmon and steelhead harvest and the right to regulate their own fisheries.

WOW_EJ01



JANET MCCLOUD, YET-SI-BLUE (MARCH 30, 1934 – NOVEMBER 25, 2003)

Janet McCloud, a descendant of Chief Seattle, helped organize “fish-ins” on the Nisqually and Puyallup rivers in the 1960s as Northwest tribes asserted their treaty rights. When she was arrested for defying state game wardens, McCloud emerged from jail more determined than ever. Some called her “the Rosa Parks of the American Indian Movement.”

McCloud and her husband, a Nisqually tribal fisherman, were founding members of the Survival of American Indian Association. She cranked out its newsletter on a second-hand mimeograph machine. One day she said she was gazing at Mount Rainier, in all its white-robed majesty, when she “saw all the faces of the great chiefs” and heard a voice that sounded like Crazy Horse telling her not to be afraid. McCloud began “spreading the message of native spirituality and human rights worldwide.” The resilient activist who became known as “Yet-Si-Blue” - “the woman who talks” - died in 2003 at 69.



We're going to take Big Oil down.

FAWN SHARP (MAY 20, 1970 - PRESENT)

Fawn Sharp was born in Aberdeen, WA and is a Native American politician, attorney, and policy advocate that currently serves as the President of the National Congress of American Indians. Sharp believes there is “irrefutable” evidence that global warming threatens “the planet our Creator gave us.” Her people are fighting for their livelihoods, Sharp says—maybe their very lives. The glaciers that feed the rivers and support the salmon integral to the Quinault culture and economy are disappearing. Forests on tribal lands are changing. Tidal surge, storms and tsunamis threaten Taholah, the tribal village where the Quinault River flows into the Pacific. The Tribal Council needs to move 700 people to higher ground.

Sharp, an attorney, reveres the tribal elders who won the fishing rights wars in the 1970s. Now she vows to sue the fossil fuel industry for the collapse of tribal fisheries. She cites Scientific American’s report that the industry was aware of climate change as far back as 1977, yet it obfuscated the risks.

Sharp was the first person issued diplomatic credentials as a tribal leader by the United States Department of State, representing the National Congress of American Indians at the 2021 United Nations Climate Change Conference.

CITATIONS:

Arntz, D. (2015). *Extraordinary women conservationists of Washington: Mothers of nature*. The History Press.

Ressler, Sophia. (2022, Jan 24). Gov. Inslee Makes Three New Appointments to Washington Fish and Wildlife. Center for Biological Diversity. Retrieved from: <https://biologicaldiversity.org/w/news/press-releases/gov-inslee-makes-three-new-appointments-to-washington-fish-and-wildlife-commission-2022-01-24/>

Ault, Alicia. (2017, June 9). Medicine Creek: The Treaty that set the stage for Standing Rock. Smithsonian Magazine. Retrieved from: <https://www.smithsonianmag.com/smithsonian-institution/standing-rock-there-was-medicine-creek-180963623/>

Brownwolf Powers, Teresa. (2017). Ramona Bennett: Seattle Civil Rights and Labor History Project. The Civil Rights and Labor History Collection. Retrieved from: <https://depts.washington.edu/civilr/bennett.htm>

Unknown Author. N.D. Ramona Bennett and Hank Adams during trial on Native fishing rights, Tacoma, September 1970. Museum of History and Industry. Retrieved from: <https://digitalcollections.lib.washington.edu/digital/collection/imlsmohai/id/17392/rec/5>

Unknown Author. N.D. Janet McCloud. Ahead of the Curve. <https://www.sos.wa.gov/legacy/ahead-of-the-curve/environment/>

Unknown Author. N.D. Fawn Sharp. Ahead of the Curve. <https://www.sos.wa.gov/legacy/ahead-of-the-curve/environment/#two>

Unknown Author. N.D. (2022, Mar 10). Wikipedia. Retrieved from: https://en.wikipedia.org/wiki/Fawn_Sharp

GRAPHIC FRAMEWORK:

Archival photos of featured women will get a graphic treatment to create 'Scrapbook' Icons. Women will be paired with a visual that complements their interests, biography, or accomplishments for easier recall. (Ex) Helen Ingle, who founded a number of Audubon Societies in Washington State, is featured with her favorite bird, the Spotted Towhee. The newsletter she wrote for the Audubon Society was also called The Towhee.



OBJECTS & ARTIFACTS, INTRODUCTION

WOW_IN01



Object Caption:

Mountaineers around a camp fire.

Photo Courtesy of Tacoma Public Library

WOW_IN02



Object Caption:

Two female Mountaineers on the summit Panorama Ridge.

Photo Courtesy of Tacoma Public Library

WOW_IN03



Object Caption:

Mountaineers cross a river.

Photo Courtesy of Tacoma Public Library

WOW_IN04



Object Caption:

Jim Torrence and Don Lemon, with Diamond Jim and the Jazzmasters released a 45 rpm novelty single titled The Aroma of Tacoma.

Location: [Discogs](#)

OBJECTS & ARTIFACTS, PART 2: OUTDOOR ENTHUSIASISTS

WOW_OE01



Profile view of Fay Fuller dressed in mountaineering clothing and holding a staff, posed portrait, related to Fay Fuller's ascent of Mount Rainier, in 1890.

Location: [Washington State Historical Society](#)

Catalog ID: 2009.0.473

Call Number: 2009.0.473

Object Types: print, photographic

Dimensions: height 8 in width 10 in

WOW_OE02



Black and white undated photographic image, a full length studio portrait of Cora Smith Eaton taken at an unknown location. She is standing in profile with her head turned towards the photographer. She is wearing a long dress with ruffles above the hem, and leg of mutton sleeves.

Location: [Washington State Historical Society](#)

Catalog ID: 2014.55.1

WOW_OE03



The A-Y-P flag to which the "Votes for Women" pennant was attached on Mount Rainier's summit.

Location: Washington State Historical Society

Catalog ID: 1943.42.15489



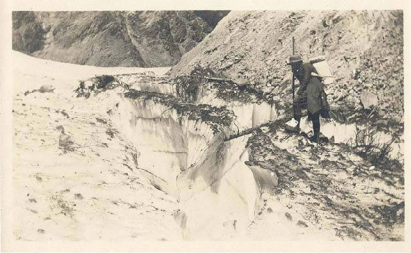
WOW_OE04

Property of Museum of History & Industry, Seattle

Portrait of Winona Bailey, circa 1890.
Photographer, Charles E. Emery.

Location: [MOHAI](#)

Image #: 1978.6688.2.4



WOW_OE05

Property of Museum of History & Industry, Seattle

This picture of Winona was taken at Dodwell-Rixon Pass in the Olympic Mountains, likely near to the spot where she survived a 75-foot fall 20 years previously. 1927.

Location: [MOHAI](#)

Image #: 1978.6688.2.5



WOW_OE06

Alma Wagen (Mrs. Horace Whitacre) dressed in mountaineering clothing standing in a meadow at Mount Rainier National Park, undated ca. 1930. She wears high top laced boots, knickers, and a feathered hat and holds an ice axe with climbing ropes wrapped around her torso. Mount Rainier is visible in the background.

Location: [Washington State Historical Society](#)

Catalog ID: 1981.12.48

Call Number: Pierce County Medical Society Photo Lot 052

Dimensions: height 10 in . width 8 in



WOW_OE07

Property of Special Collections, University of Washington Libraries

Bernice E. Newell, Tacoma, Washington, ca. 1899.
Photographer, Albert L. Jackson.

Location: [UW Special Collections](#)

Catalog ID: POR561

WOW_OE08



A misty beach scene. The foreground is a broad swath of sand that is strewn with boulders with lapping waves behind. The background landscape is obscured in fog and tends to blend with the overcast sky. 1900.

[University of Puget Sound Collection](#)

Catalog ID: Awh.10.008.

WOW_OE09

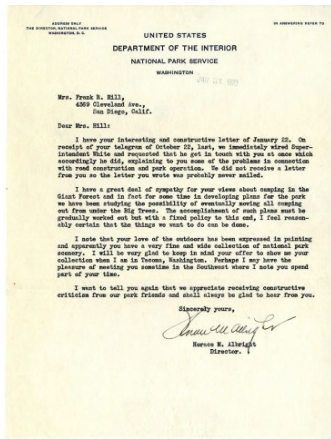


Landscape painting that depicts a snow-capped mountain rising up from water's edge under pinkish morning light. The lower half of the composition is water that reflects the mountain, trees, and sky. A triangular piece of land that juts in from the left is covered with evergreen trees that dwarf a small cabin on the shore. A foreground is established by rippling water and a log that floats in the lower corner.

[University of Puget Sound Collection](#)

Catalog ID: Awh.10.005.

WOW_OE10



Abby Hill letters to Horace Albright, Superintendent of the National Parks.

[University of Puget Sound Collection](#)

WOW_OE11



Ta-Tan-Ka-Ska-/ (White Bull No. 2) & myself. (Joseph White Bull was known to the Hill family as White Bull or Ta-Tan-Ka-Ska.)

[University of Puget Sound Collection](#)

Catalog ID: awhphotos0049

WOW_OE12



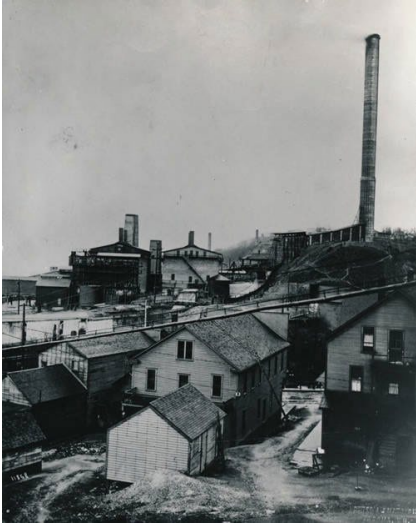
Abby Williams Hill in a white high-necked blouse and dark skirt holding a bird.

[University of Puget Sound Collection](#)

Catalog ID: Awhphotos0078

OBJECTS & ARTIFACTS, PART 3: ENVIRONMENTAL HEALTH & CONSERVATION

WOW_EH01



History of the Tacoma Smelter and Its Workers

Location: [UW Special Collections](#)

WOW_EH02



Black-and-white photograph of Rachel Carson seated with her dog, Rags, at one of her rental homes in Silver Spring, Maryland in the 1940s.

[Collection on Rachel Carson, Chatham University Archives & Special Collections](#)

WOW_EH03



Detail of portrait of Rachel Carson with microscope and petri dish captured by Alfred Eisenstaedt, 1962.

[Collection on Rachel Carson, Chatham University Archives & Special Collections](#)

WOW_EH04



Audio file:

Polly Dyer on "Conservation as Its Own Reward," from an oral history conducted by Susan Schrepfer, 1983

Courtesy Pacific Northwest Conservationists, Regional Oral History Office, The Bancroft Library, University of California, Berkeley

WOW_EH05



Polly Tomkiel Dyer (1920-2016) and John A. Dyer (1911-2008) on their wedding day, Ketchikan, Alaska, August 7, 1945

Courtesy Polly Dyer

WOW_EH06



Property of Special Collections, University of Washington Libraries.

Emily Haig at the Federation of Western Outdoor Clubs Annual Convention, University of Montana, Missoula, 1970

Location: [UW Special Collections](#)

Catalog ID: PH Coll 666.10

OBJECTS & ARTIFACTS, PART 4: COMMUNITY ADVOCATES

WOW_CA01



Object Caption:

Eva Stewart poses with her catch of the day in 1962 to promote one of the weekly salmon bakes held at Point Defiance Park.

Photo from [Metro Parks Tacoma archives](#)

WOW_CA02



Object Caption:

Rosalie Edge poses with a red-tailed hawk.

Photo from [Rosalie Edge Archives](#)

WOW_CA03



Object Caption:

Esther Stark Maltby (Mrs. H.E.), 16th President of the Washington State Federation of Women's Clubs. Photo from Washington State Federation of Women's Clubs records placed in care of the Suzzalo Library at the University of Washington.

Photo from [Washington State Parks Foundation](#)

WOW_CA04



Object Caption:

Helen Engle, female conservationist and founder of the Tahoma Chapter of the Audubon Society.

Photo from [Tahoma Audubon Society](#)

OBJECTS & ARTIFACTS, PART 5: ENVIRONMENTAL JUSTICE



WOW_EJ01

Property of Museum of History & Industry, Seattle

Object Caption:

This photo of Ramona Bennett was taken for a profile of her run by the Seattle Post-Intelligencer in October 1976. At the time, Bennett was chairwoman of the Puyallup Tribal Council. Photographer, Dave Potts.

[Museum of History and Industry](#)

2000.107.020.10.02.



WOW_EJ02

Property of Museum of History & Industry, Seattle

Object Caption:

Janet McCloud speaking at press conference, Olympia, July 3, 1968

[Museum of History and Industry](#)