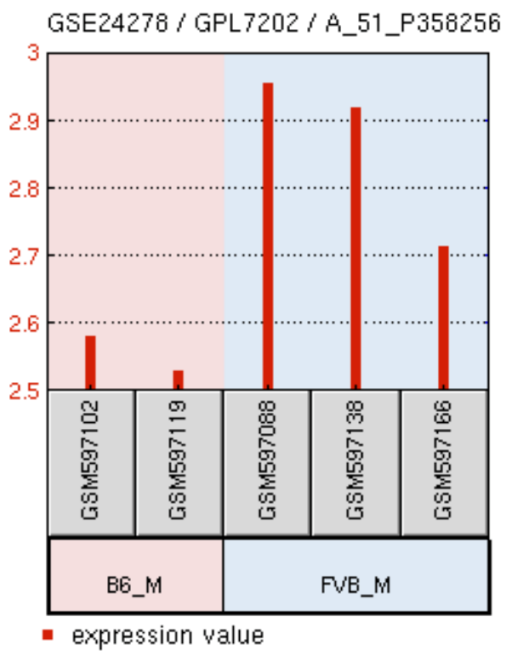
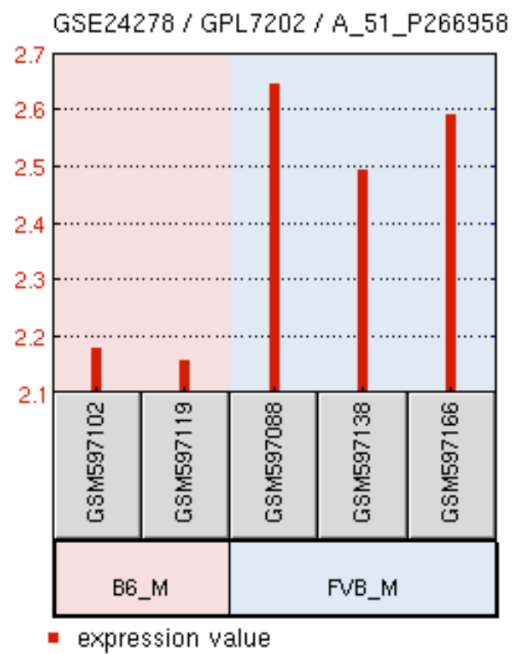


PXR

CAR

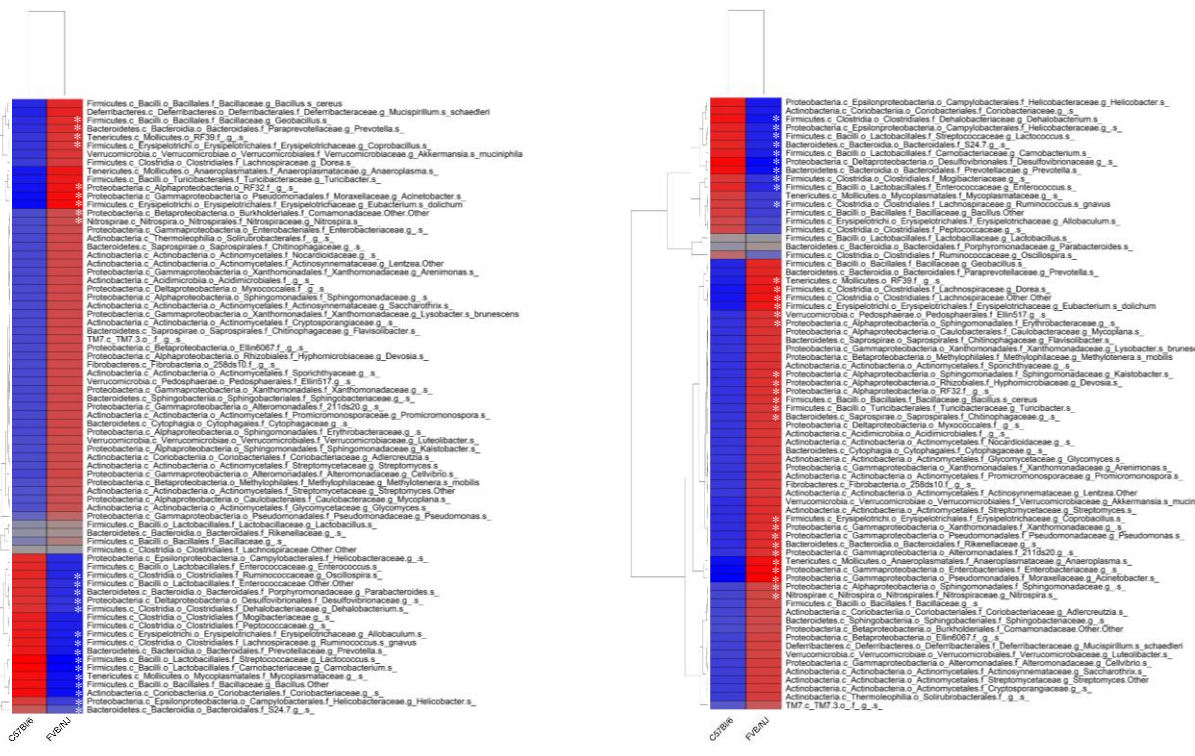


Liver

Bradford et al., 2011

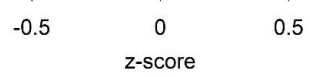
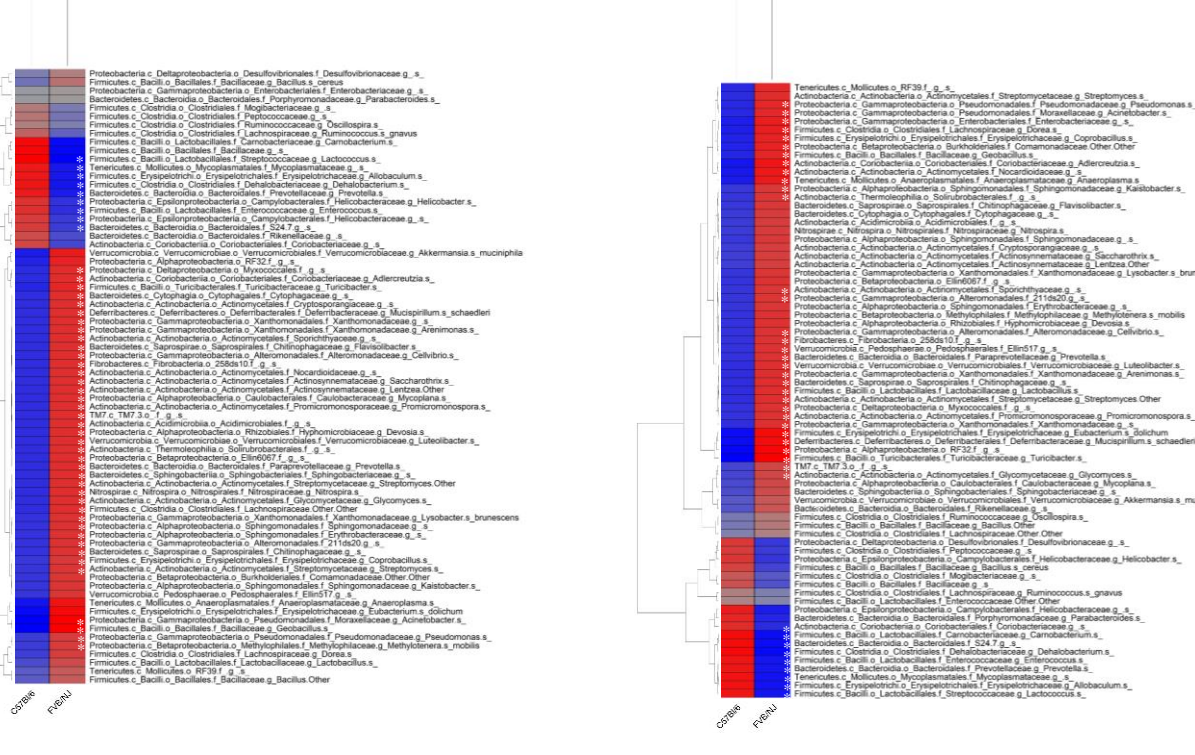
Adolescent Males

Adult Males



Adolescent Females

Adult Females

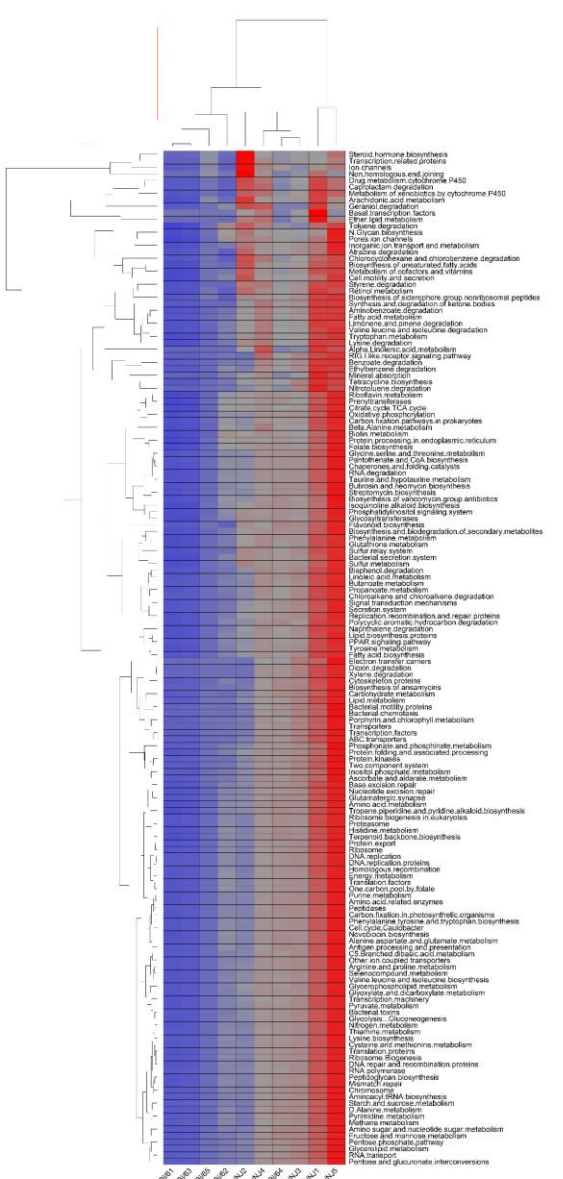
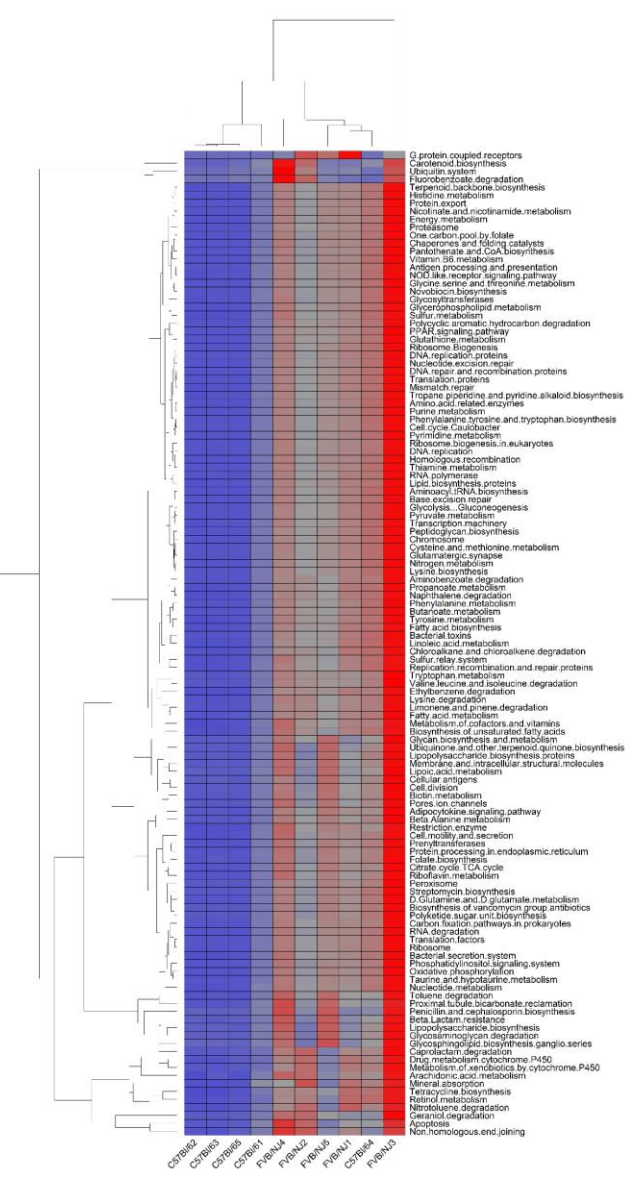


$p < 0.05$, t-test

Functional Predictions

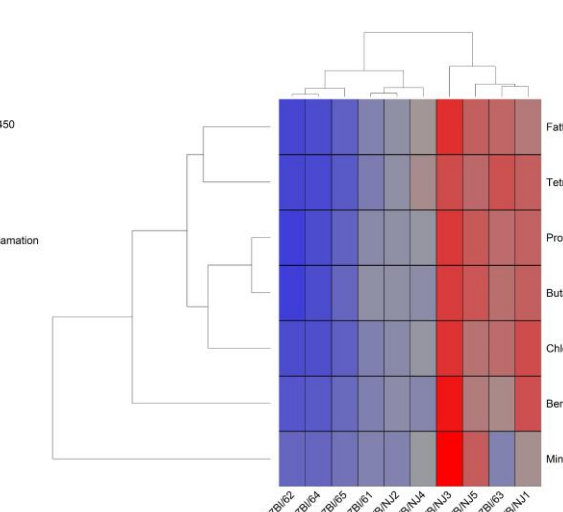
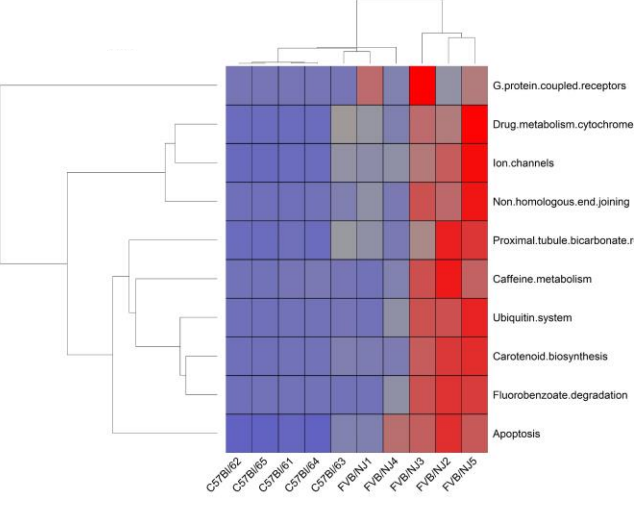
Adolescent Males

Adult Males



Adolescent Females

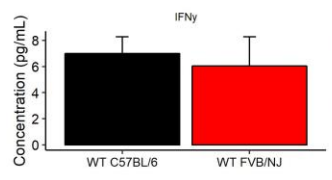
Adult Females



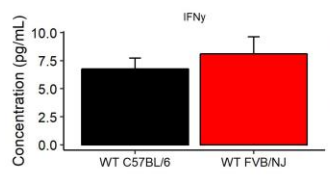
p < 0.05, t-test



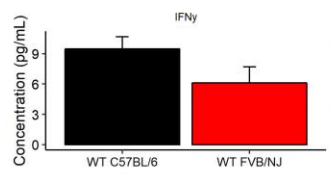
Adolescent Males



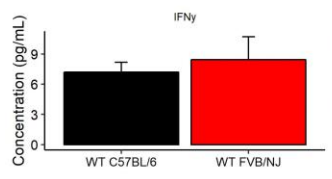
Adult Males



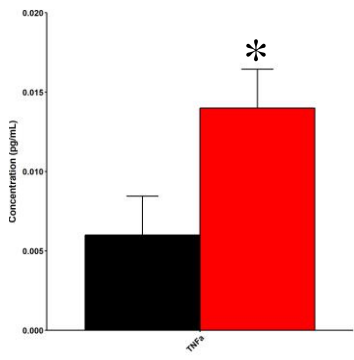
Adolescent Females



Adult Females



Adult Females Supplemental TNF α

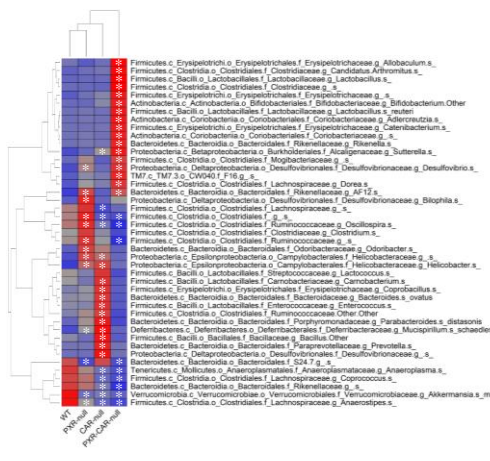


$p < 0.05$, *t*-test

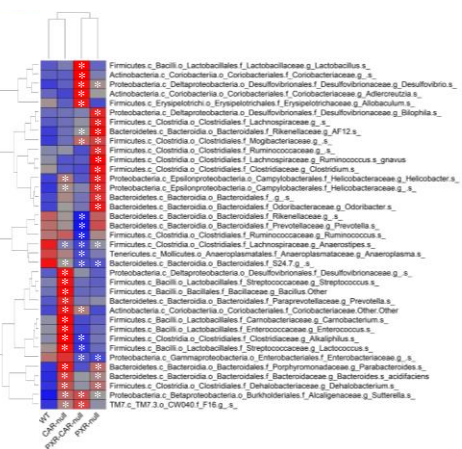
- = WT C57BL/6J
- = WT FVB/NJ

Adolescent Males

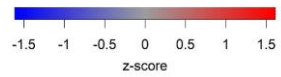
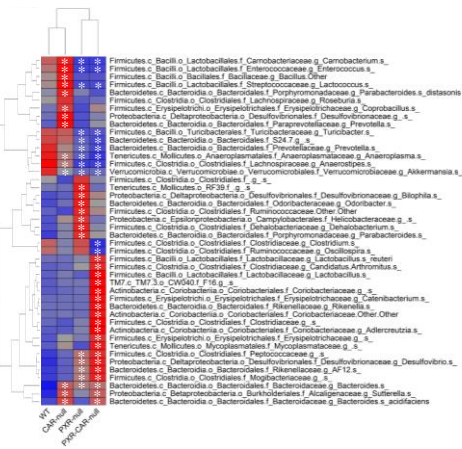
Top Abundant Bacteria



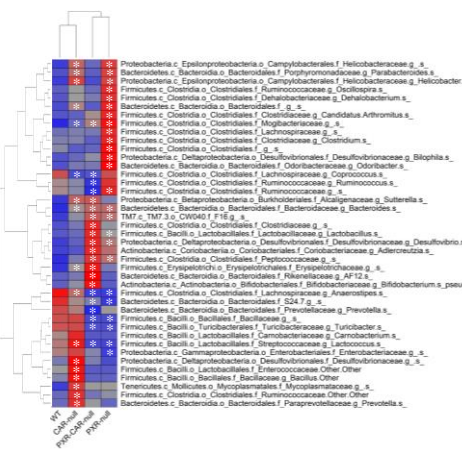
Adult Males



Adolescent Females

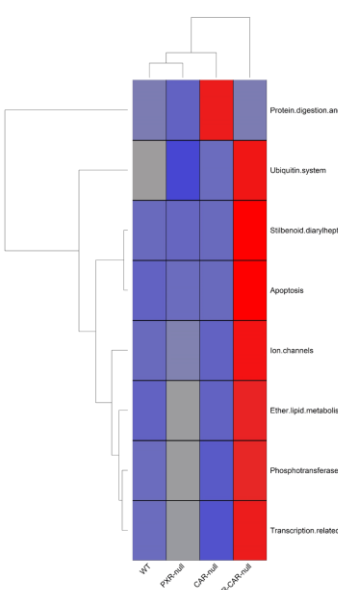


Adult Females

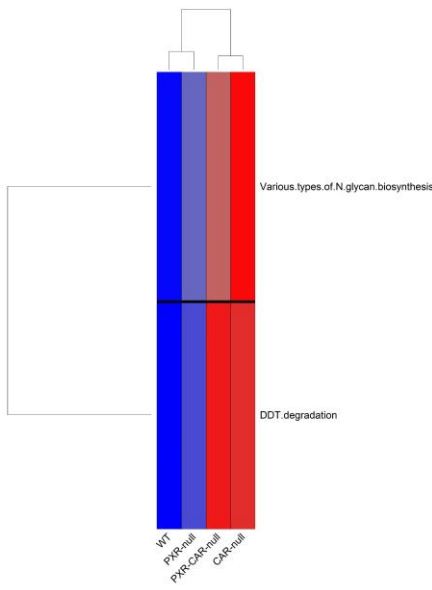


$p < 0.05$, ANOVA with Duncan's test

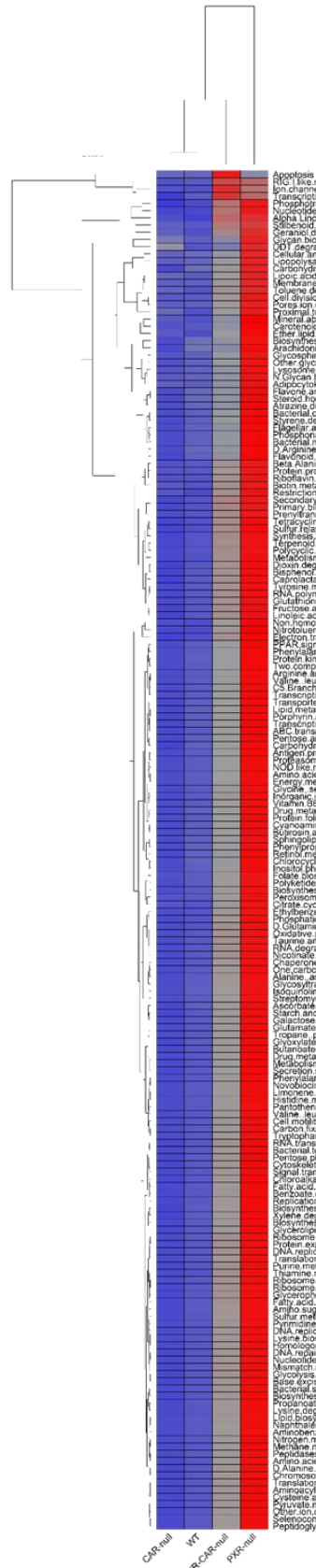
Adolescent Males



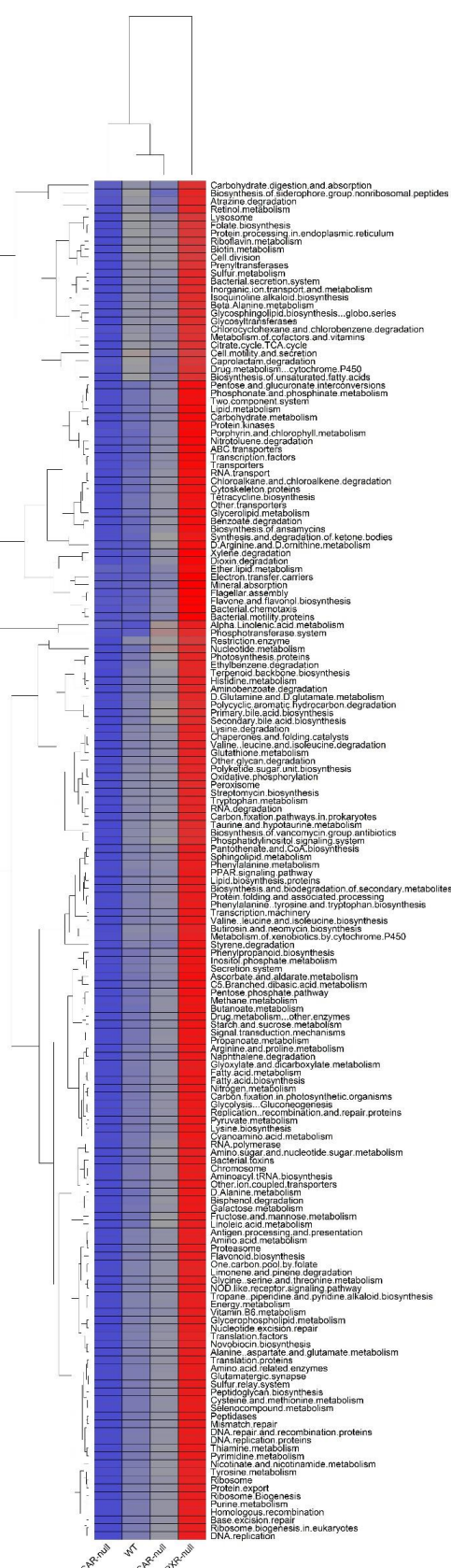
Adult Males



Adolescent Females

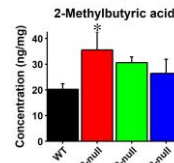
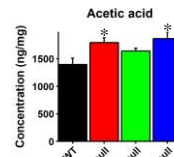
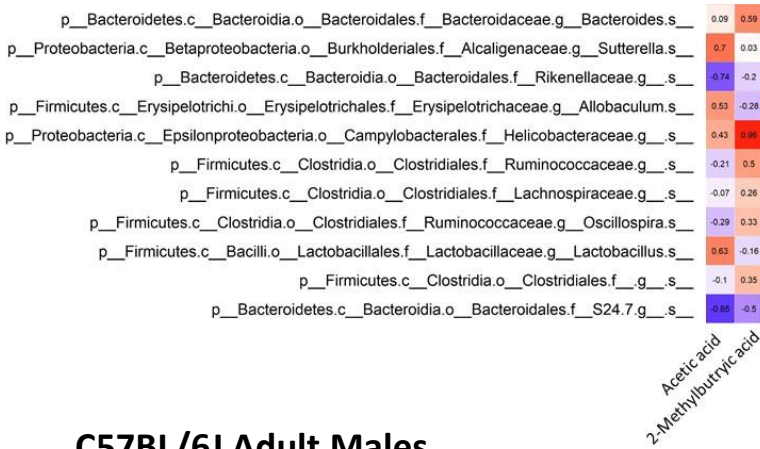


Adult Females

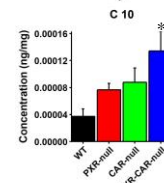
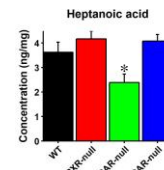
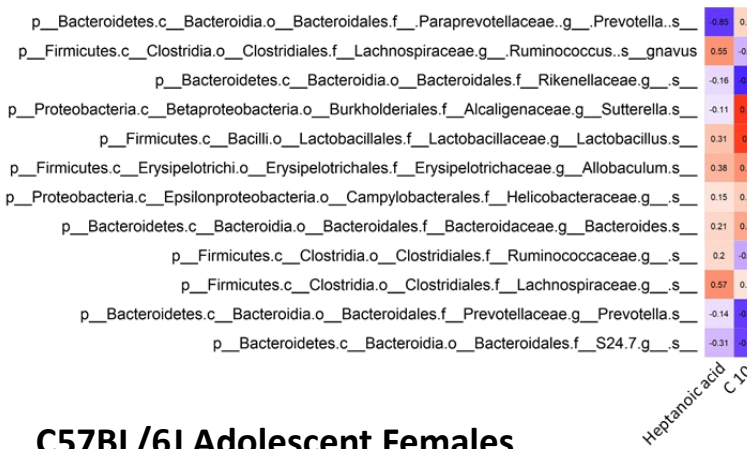


$p < 0.05$, ANOVA with Duncan's test

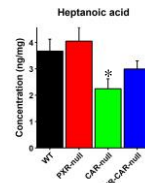
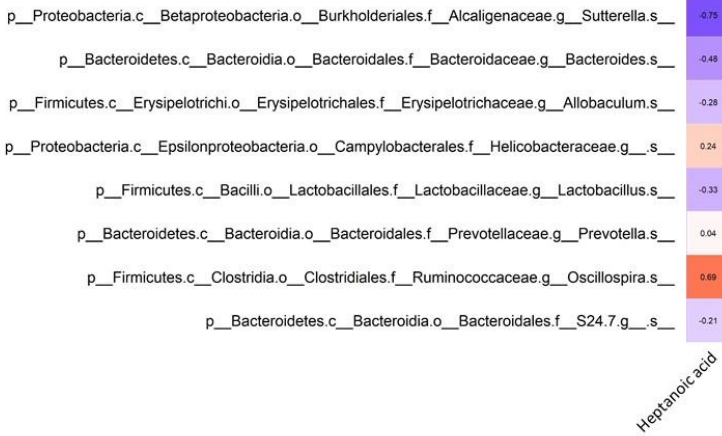
C57BL/6J Adolescent Males



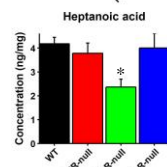
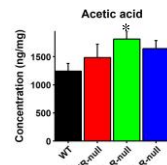
C57BL/6J Adult Males



C57BL/6J Adolescent Females

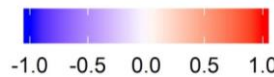


C57BL/6J Adult Females



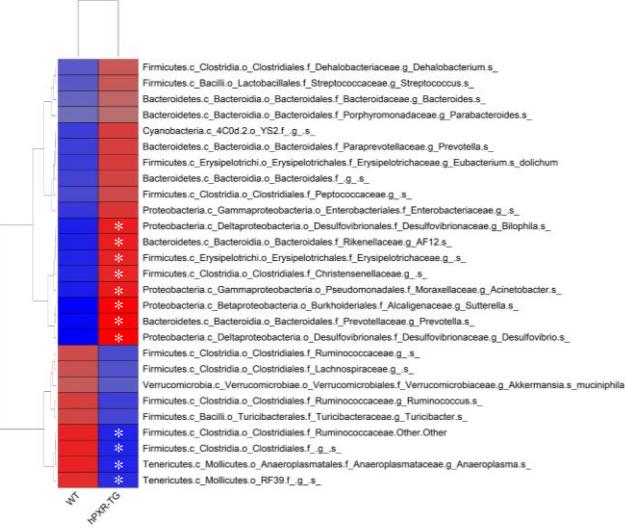
- = WT
- = PXR-null
- = CAR-null
- = PXR-CAR-null

Pearson Correlation

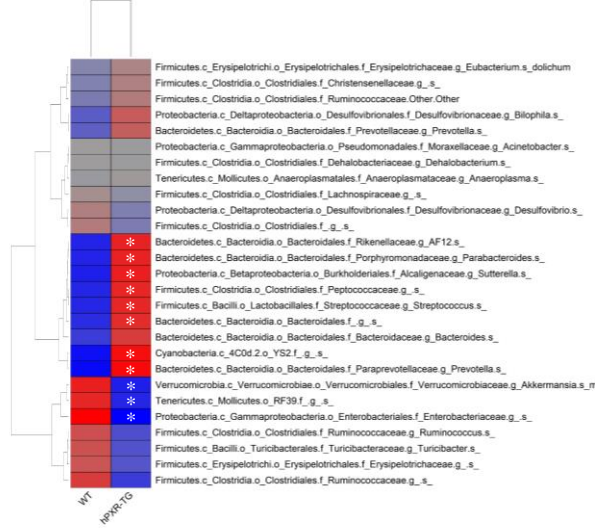


$p < 0.05$, ANOVA with Duncan's test

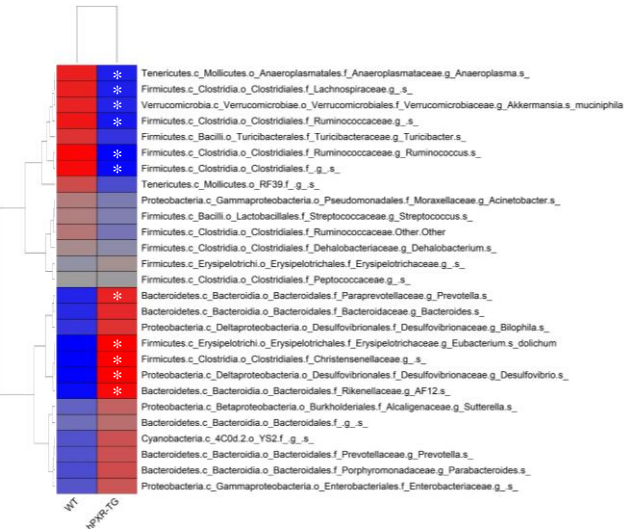
Adolescent Males



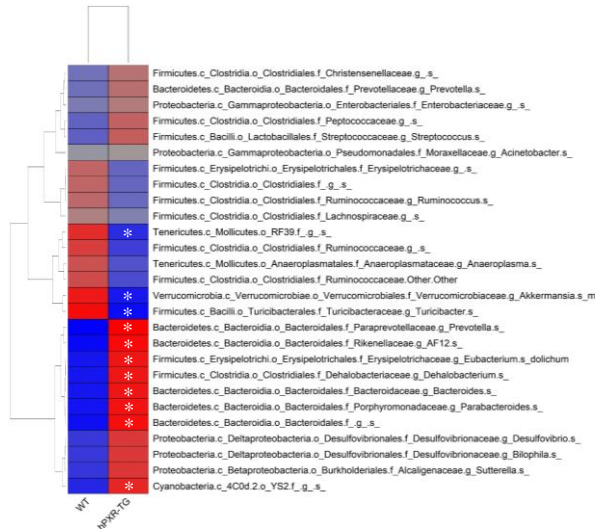
Adult Males



Adolescent Females



Adult Females

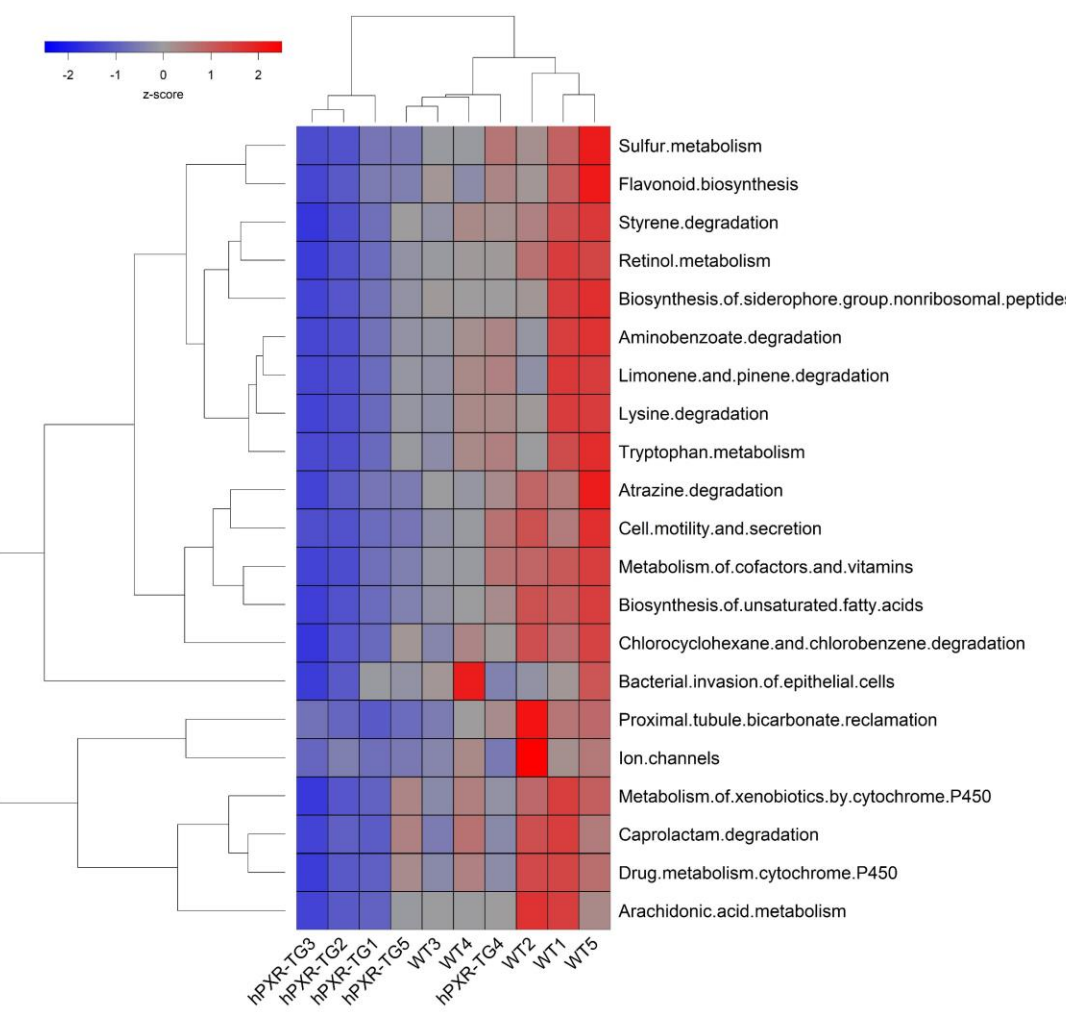


p < 0.05, t-test



Functional Predictions

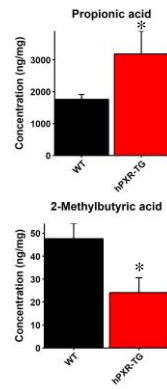
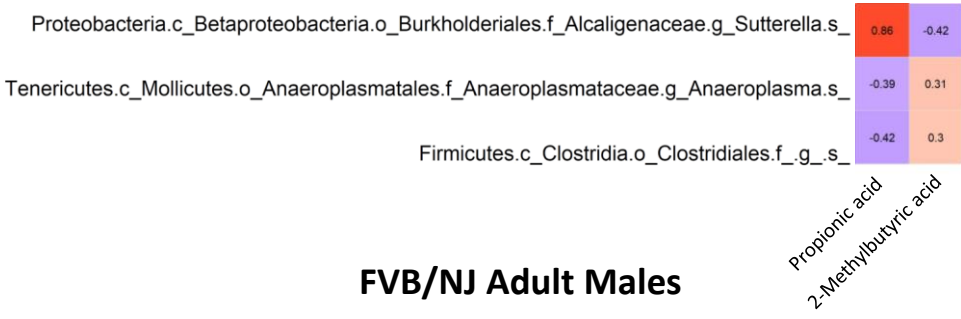
Adult Males



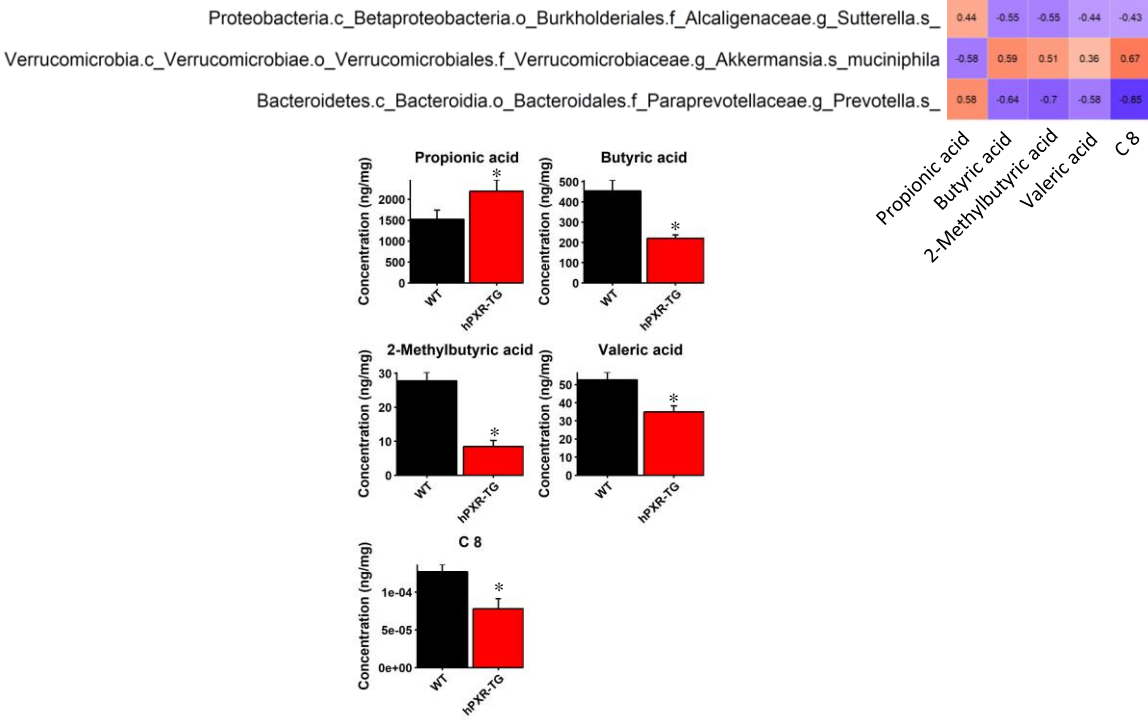
$p < 0.05$, *t*-test

Supplemental Figure 10

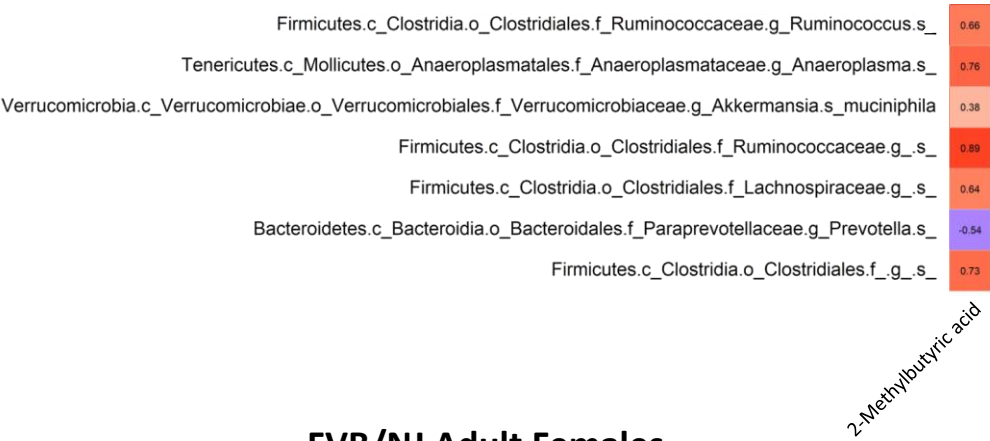
FVB/NJ Adolescent Males



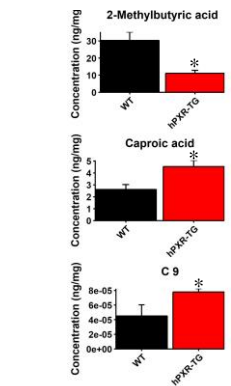
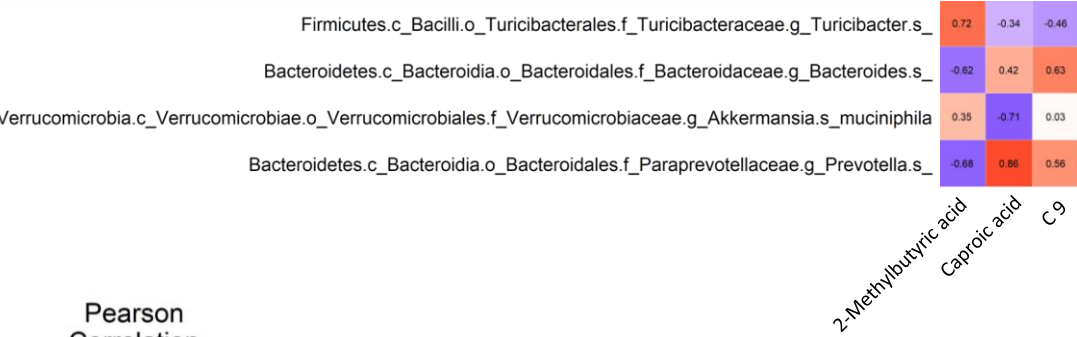
FVB/NJ Adult Males



FVB/NJ Adolescent Females



FVB/NJ Adult Females



Pearson Correlation



p < 0.05, t-test

