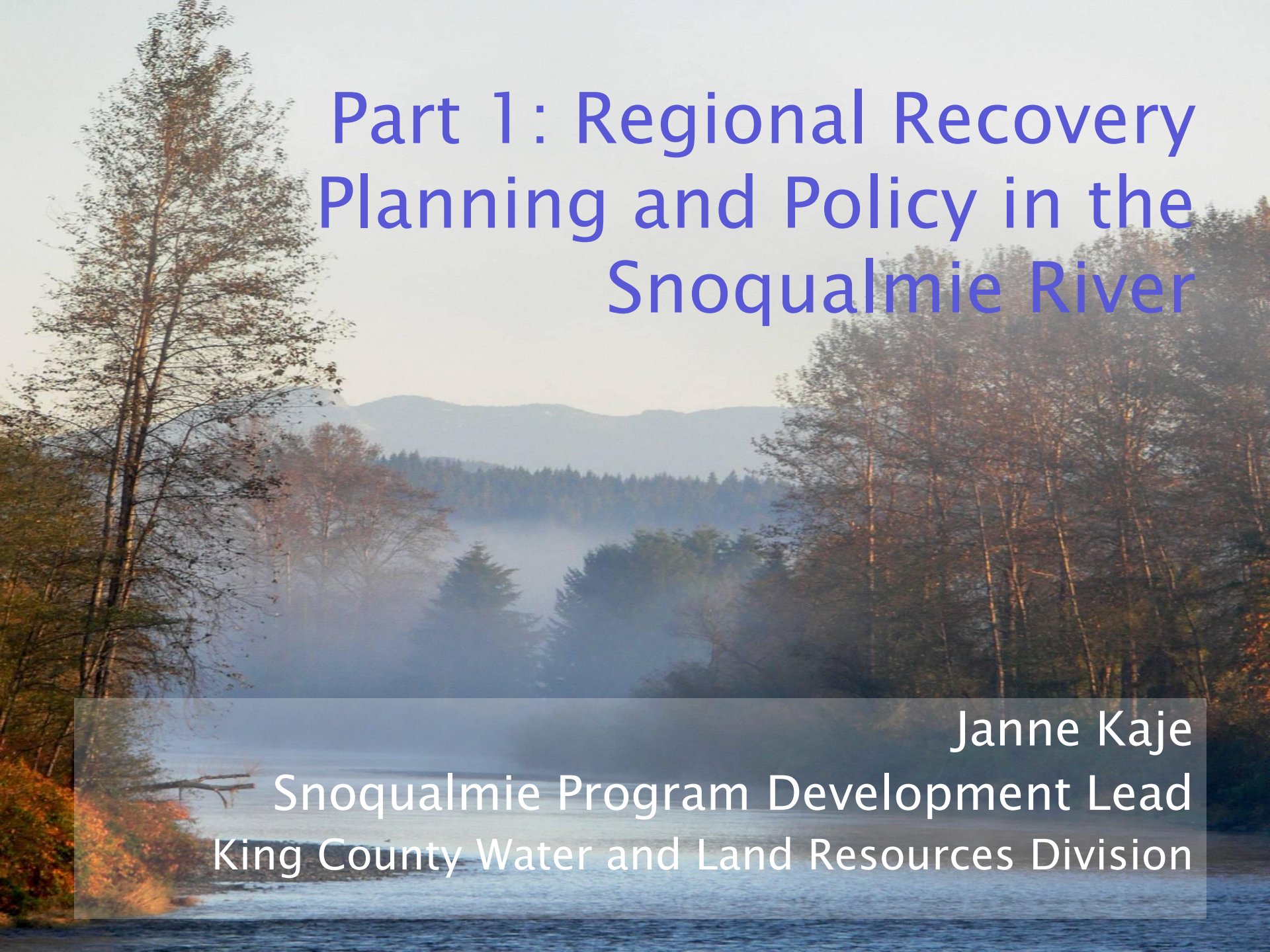


Salmon Recovery Mini-series: Planning, Science, and Implementation in the Snoqualmie River

Water Center, University of Washington
Seattle
Week 1: April 13, 2010



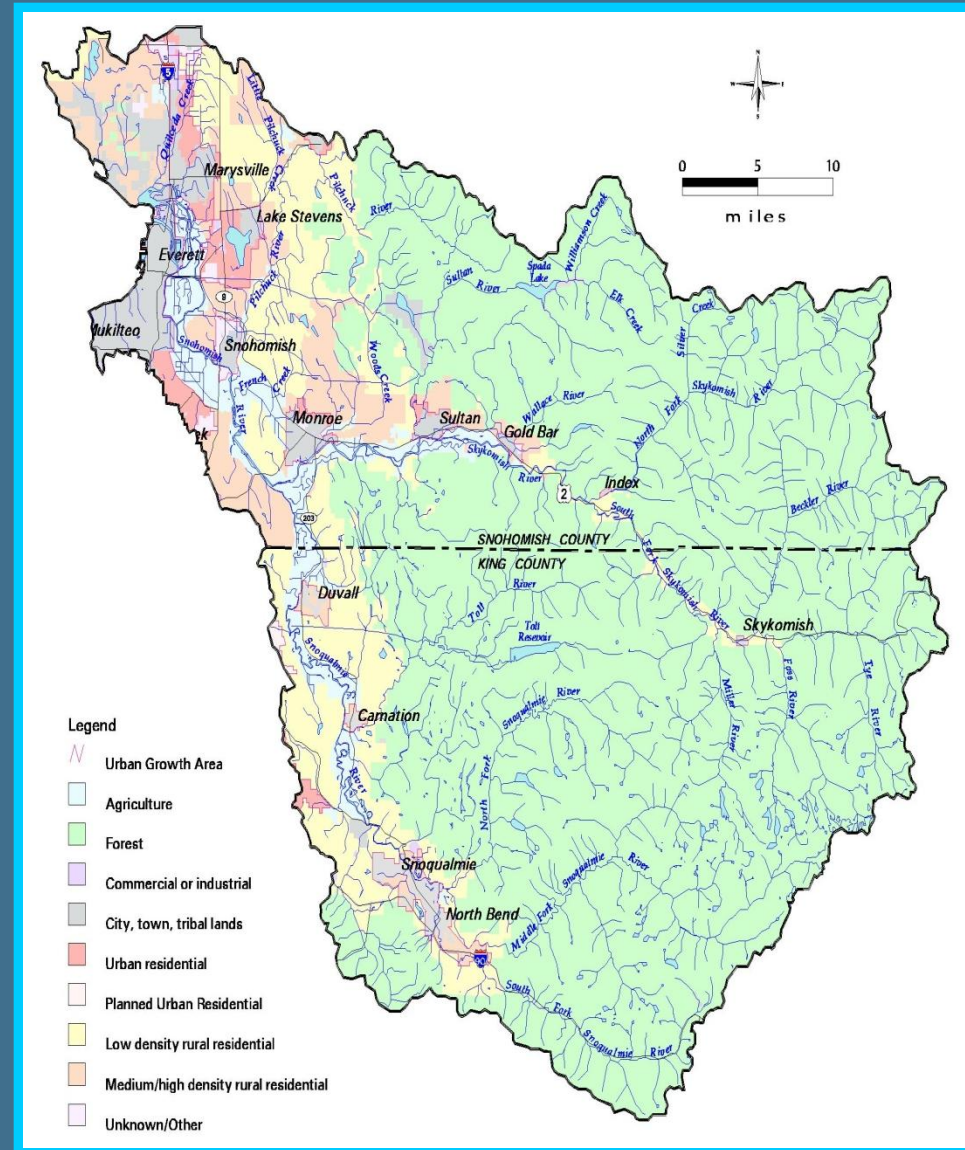
A scenic landscape photograph of a river flowing through a forested valley. The river is in the foreground, and the background features rolling mountains under a hazy sky. The trees are in various shades of green and brown, suggesting an autumn setting. The overall mood is peaceful and natural.

Part 1: Regional Recovery Planning and Policy in the Snoqualmie River

Janne Kaje
Snoqualmie Program Development Lead
King County Water and Land Resources Division

Snoqualmie Watershed: Part of Snohomish Basin

- Second largest basin in Puget Sound (1 856 sq mi)
- Nine salmonid species (3 listed under ESA)
- Critical basin for Chinook recovery
- 25–50% of wild Coho in Puget Sound
- Land use:
 - 74% forested
 - 15% residential
 - 6% urban
 - 5% agricultural



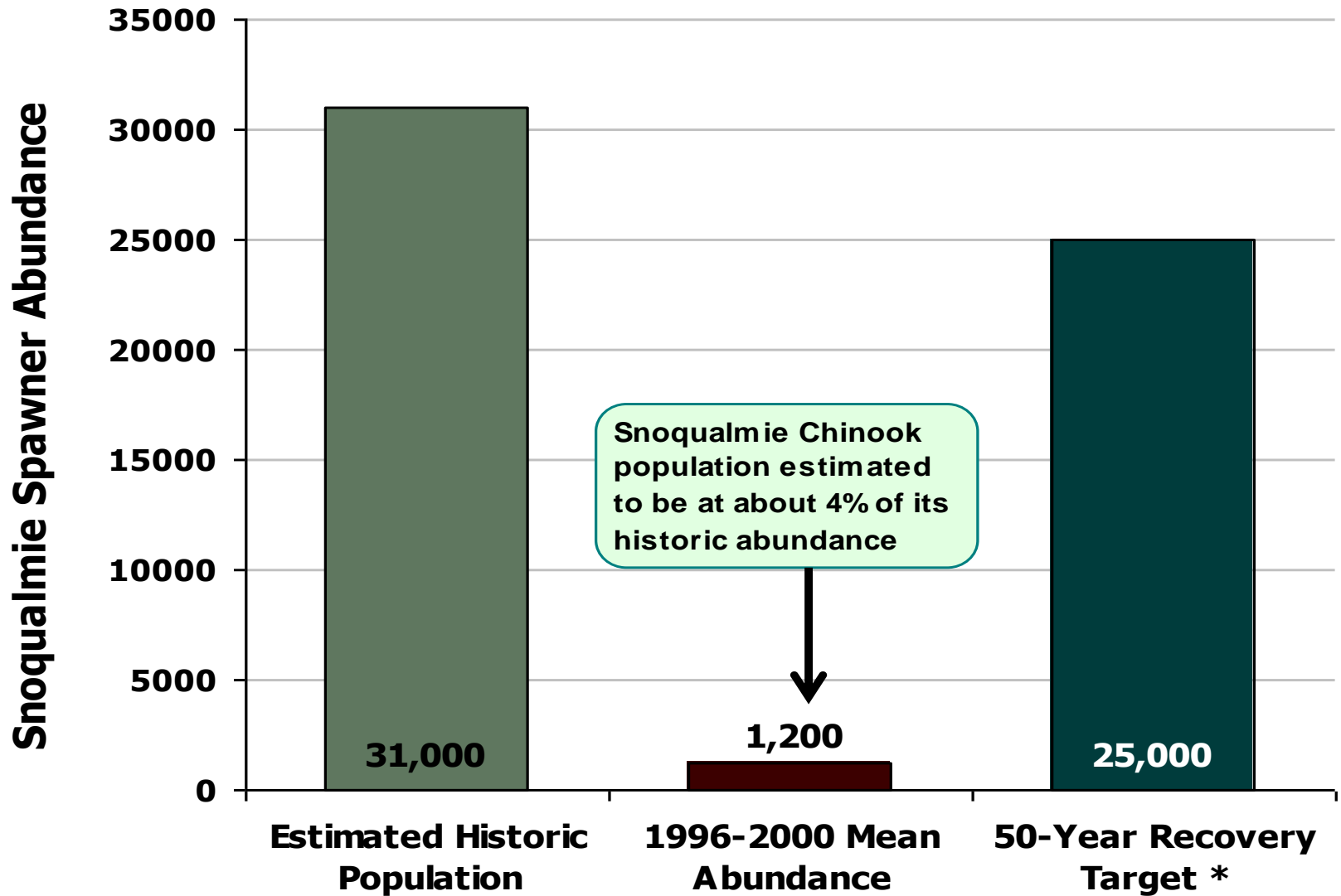


Challenges:

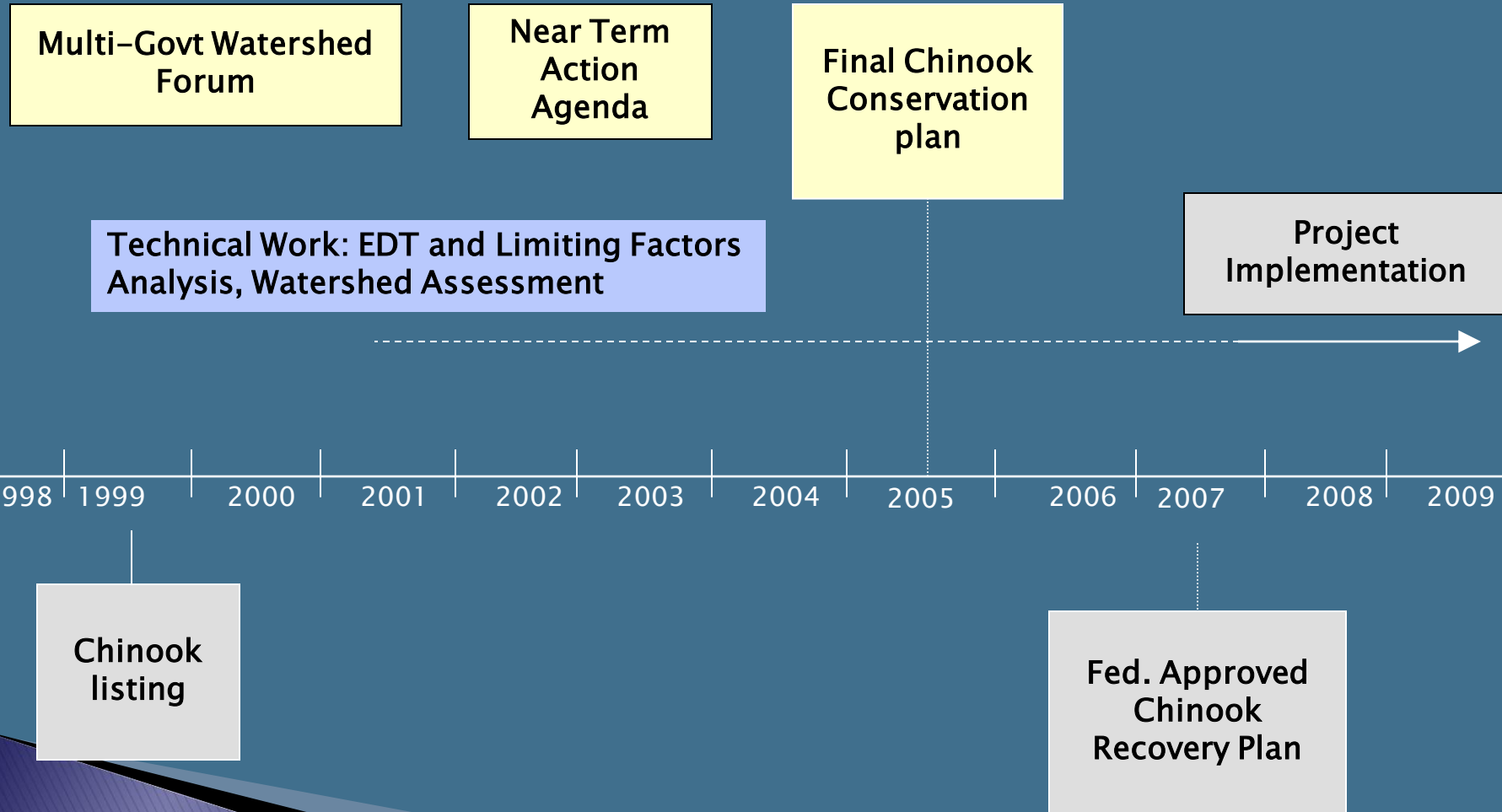
- Big river
- Major flooding
- Towns
- Active agriculture
- Recreation use
- Cultural resources



Snoqualmie – Chinook Salmon Population



Salmon Conservation Planning Timeline 1998 – Today



Inter-local Watershed Forums

- ▶ Forums 2001 to today – strong commitment to planning and implementation
- ▶ Snohomish Forum developed salmon conservation plan on strong science and policy – All local governments ratified the salmon recovery plan



What are the Restoration Priorities?

- ▶ HYPOTHESIS: If we increase quantity and improve quality of juvenile rearing habitat, population productivity will increase.
 - Increase off-channel habitat and channel complexity
 - Remove levees and reconnect floodplains
 - Improve edge complexity and increase riparian forests
 - Protect spawning areas



Where Should We Focus Our Actions?

▶ Ecological prioritization

- Improve early-rearing habitat near core spawning areas
- Protect core spawning areas from degradation

▶ Social prioritization

- Public lands first
 - Mainstem Snoqualmie ownership:
20% Public, 80% private (mostly Ag)

Where is the spawning gravel?

- ▶ Lower Tolt River
- ▶ Raging River
- ▶ Mainstem River downstream of these confluences



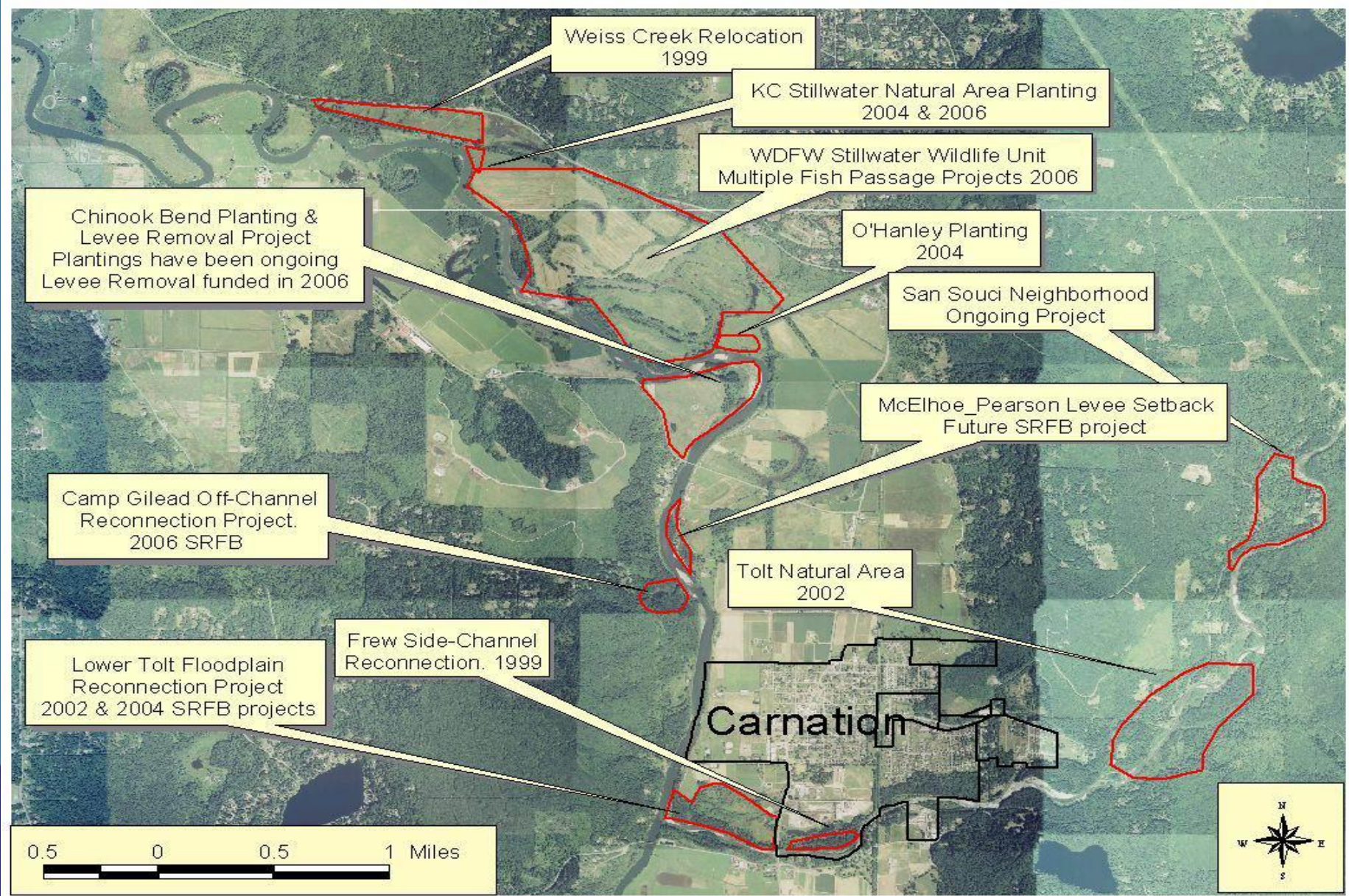
**Stillwater
project (next)**

**Chinook
Bend project
(Week 3)**

**Lower Tolt project
(Week 2)**



Snoqualmie String of Pearls



Thank You!

