

Welty Thesis Figures v4

Table 1. Demographic and Tumor Characteristics by Gender of Patients with Squamous Cell Carcinoma of the Bladder (SEER 1988-2008).

	Females (N=974)	Males (N=995)	p-value ¹
Age in years			
<60	174 (17.9)	231 (23.2)	
60-69	204 (20.9)	217 (21.8)	
70-79	280 (28.8)	292 (29.4)	
80+	316 (32.4)	255 (25.6)	0.002
Race			
White	814 (83.6)	855 (85.9)	
Black	124 (12.8)	100 (10.1)	
Other	34 (3.2)	37 (3.7)	
Unkown	2 (0.2)	3 (0.3)	0.450
Tumor Stage (N, %)			
Ta, Tis	30 (3.0)	29 (2.9)	
T1	72 (7.4)	65 (6.5)	
T2	320 (32.9)	352 (35.4)	
T3	177 (18.2)	169 (17.0)	
T4	185 (19.0)	184 (18.5)	
Missing	190 (19.5)	196 (19.7)	0.672
Grade			
Well differentiated	68 (7.0)	85 (8.5)	
Moderately differentiated	322 (33.1)	285 (28.6)	
Poorly differentiated	366 (37.6)	382 (38.4)	
Anaplastic	70 (7.2)	99 (10.0)	
Missing	148 (15.2)	144 (14.5)	0.054
Lymph Nodes			
Negative	564 (57.9)	599 (60.2)	
Regional ²	113 (11.6)	120 (12.1)	
Distant ³	16 (1.6)	13 (1.3)	
Missing	281 (28.8)	261 (26.4)	0.744
Metastases (N, %)			
M0	789 (81.0)	803 (80.7)	
M1	109 (11.2)	134 (13.5)	
Mx	76 (7.8)	58 (5.8)	0.087
Primary Treatment			
None	148 (15.2)	132 (13.3)	
Transurethral only	340 (34.9)	320 (32.2)	
Surgery ⁴	308 (31.6)	352 (35.4)	
Radiation	140 (14.4)	136 (13.7)	
Combination	33 (3.4)	55 (5.5)	
Missing	5 (0.5)	0 (0)	0.011

¹p-value determined by chi-square test

²positive lymph nodes confined to the pelvic lymph nodes below the common iliac nodes

³positive common iliac lymph nodes or higher

⁴surgery includes cystectomy and partial cystectomy

Welty Thesis Figures v4

Figure 1. Kaplan-Meier curves for cause-specific survival (CSS) of men and women following diagnosis of squamous cell carcinoma of the bladder. P-values for the log-rank test for each comparison are shown. Low grade is defined as grade 1-2, high grade is 3-4. Low stage is non-muscle invasive, high stage is muscle invasive or more. (a) Overall, (b) low grade, low stage, (c) high grade, low stage, (d) low grade, high stage, (e) high grade, high stage

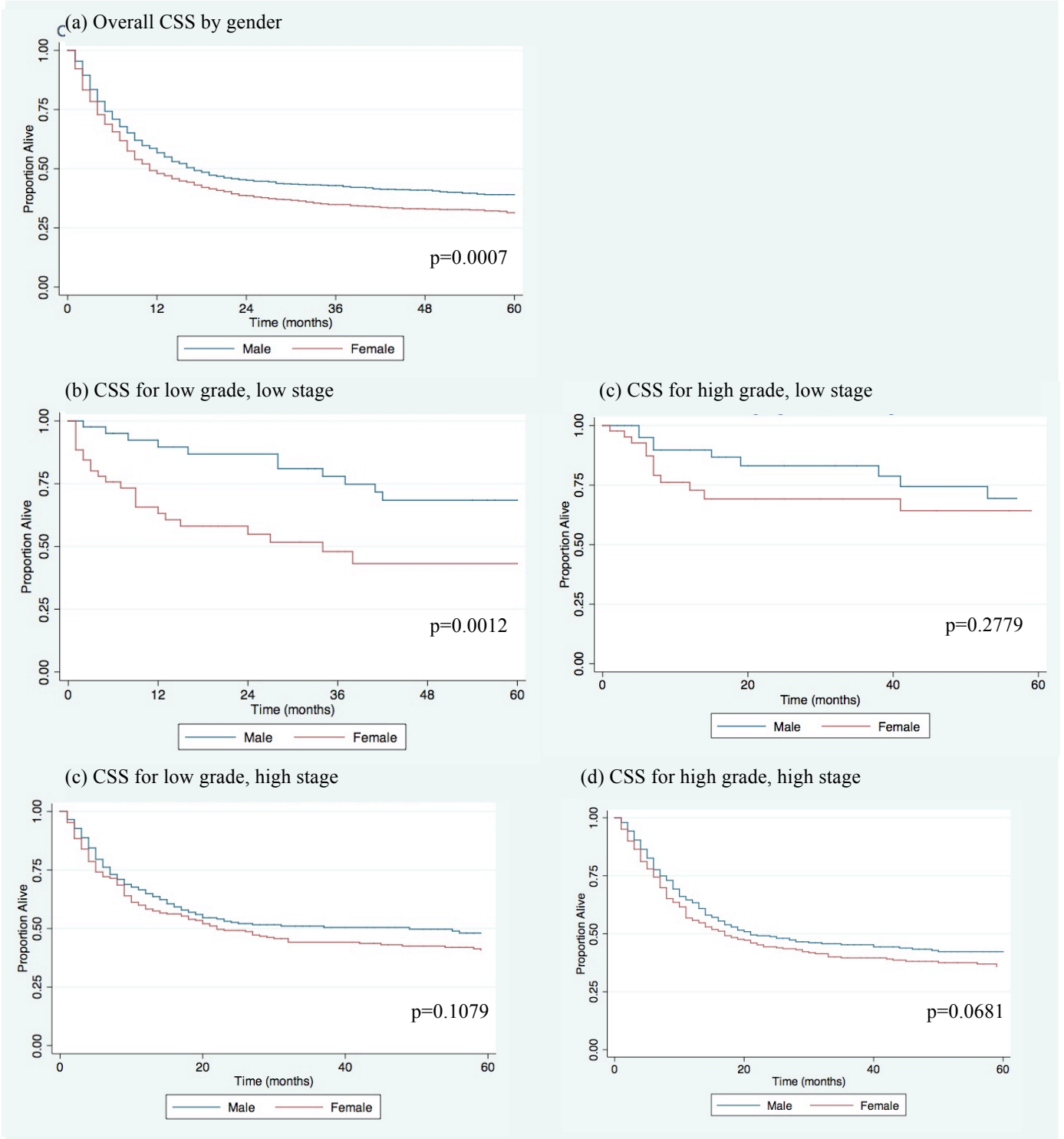


Figure 2. Kaplan-Meier curves for cause-specific survival (CSS) by race following diagnosis of squamous cell carcinoma of the bladder. P-values for the log-rank test for each comparison are shown.

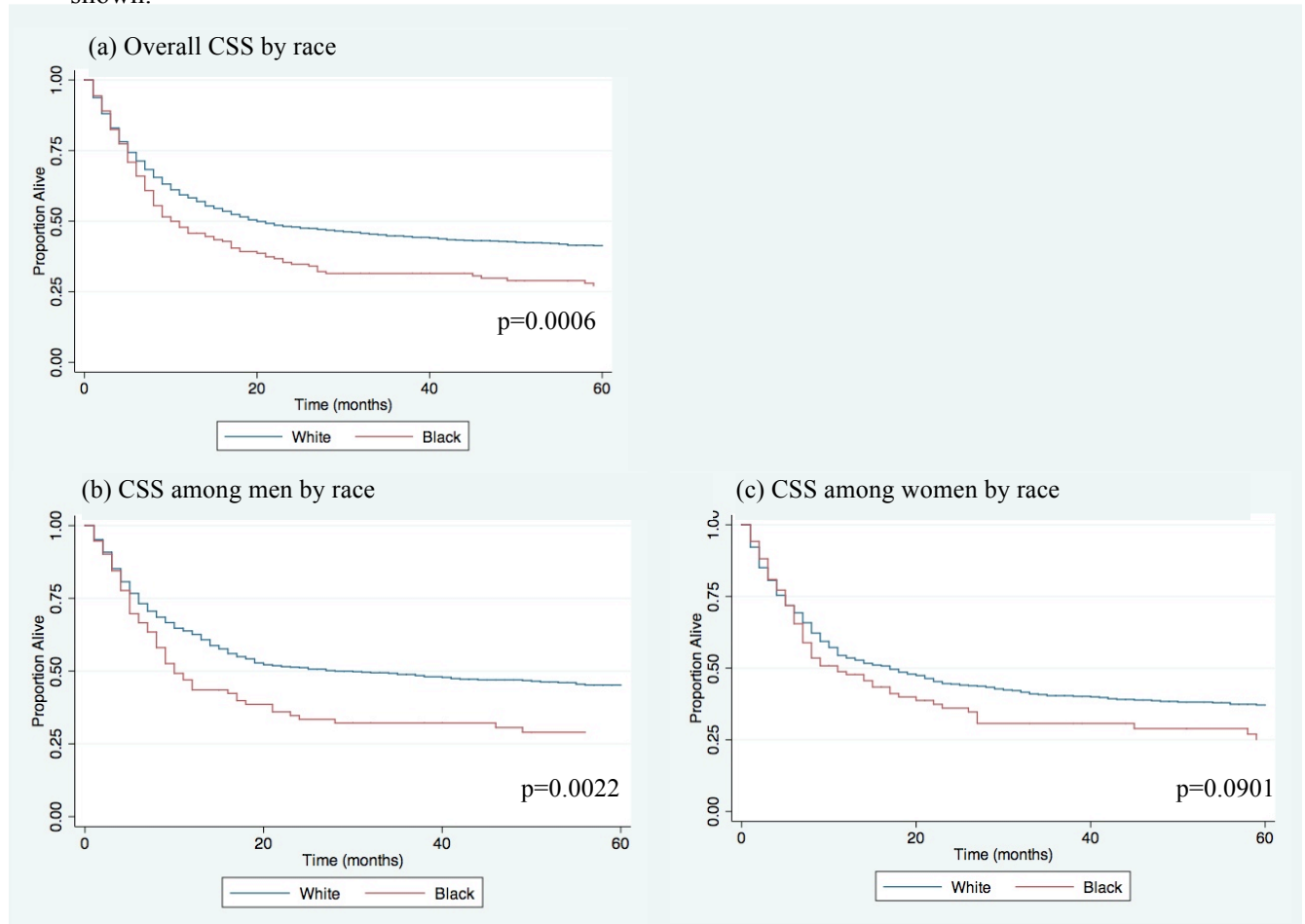


Table 2. Adjusted¹ Risk of Cause Specific Death among Females compared to Males with Squamous Cell Carcinoma of the Bladder Stratified by Race, Disease Extent, Tumor Stage², Grade³, and Treatment Type (compared to males).

	Number of Cases		Hazard Ratios (Female compared to Male)		
	Female (deaths) ⁵	Male (deaths) ⁵	HR	95% CI	p-value
Disease Extent					
Local	980 (451)	992 (390)	1.20	1.04-1.39	<i>0.011</i>
Node positive	129 (88)	115 (70)	1.40	1.01-1.95	<i>0.041</i>
Metastases present	137 (99)	163 (118)	1.00	0.75-1.33	0.983
Tumor Stage and Grade⁴					
Non-muscle invasive (Tis, Ta, Tis)					
Low Grade	56 (26)	46 (10)	2.87	1.27-6.47	<i>0.011</i>
High Grade	47 (16)	49 (13)	1.38	0.58-3.29	0.462
Muscle invasive (T2)					
Low Grade	176 (74)	168 (60)	1.14	0.79-1.63	0.485
High Grade	201 (96)	242 (97)	1.03	0.76-1.40	0.839
Extra-vesical (T3, T4)					
Low Grade	188 (99)	193 (89)	1.07	0.79-1.46	0.659
High Grade	218 (116)	214 (113)	1.07	0.82-1.40	0.598
Treatment					
Cystectomy or partial cystectomy	397 (152)	443 (158)	0.98	0.78-1.24	0.887
Radiation	164 (95)	176 (89)	1.24	0.92-1.67	0.152
Combination	40 (26)	63 (36)	1.55	0.88-2.73	0.129

¹Adjusted for age, race, diagnosis year, tumor stage, tumor grade, lymph node status, metastases, and primary treatment unless that variable was used for stratification

²Tumor stage analysis restricted to those with local disease only

³Tumor grade divided into low (well or moderately differentiated) or high (poorly differentiated or anaplastic)

⁴Excludes patients with metastases

⁵Deaths due to SCC of the bladder

Welty Thesis Figures v4

Table 3. Adjusted¹ Risk of Cause-Specific Death Among Black Men and Women Compared to White Men and Women from Squamous Cell Carcinoma of the Bladder.

	Cases (Deaths)	HR (Black v. White)	95% CI	p-value
Overall	2396 (1150)	1.19	1.06-1.34	0.003
Men	1214 (550)	1.35	1.04-1.76	0.026
Women	1182 (600)	1.16	0.92-1.47	0.212

¹Overall analysis adjusted for sex, diagnosis year, tumor stage, tumor grade, lymph node status, metastases, and primary treatment. Analysis stratified by gender adjusted for the same except for sex.